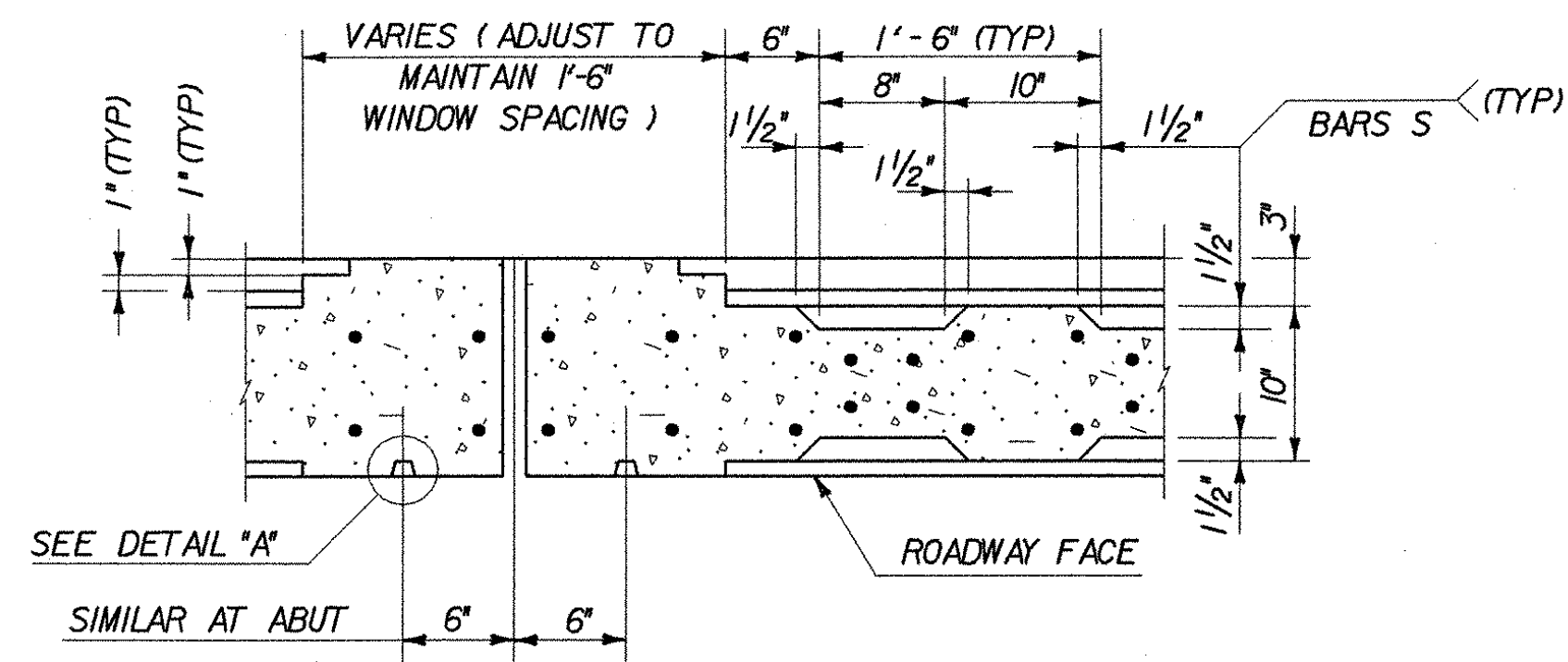
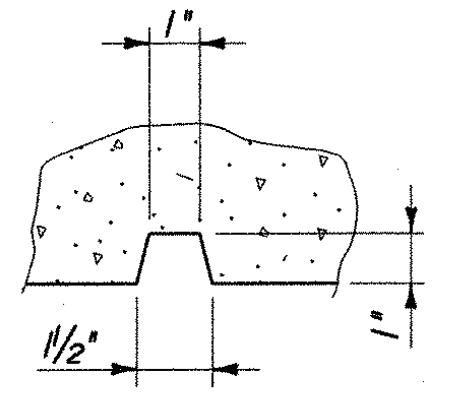


RAIL ELEVATION
SCALE: 1/2" = 1'-0"

* SEE STANDARD SB-R6-82, SCHEDULE 1, FOR POST SPACING OF HEAVY DUTY STEEL GUARD RAIL (MODIFIED) ON APPROACHES



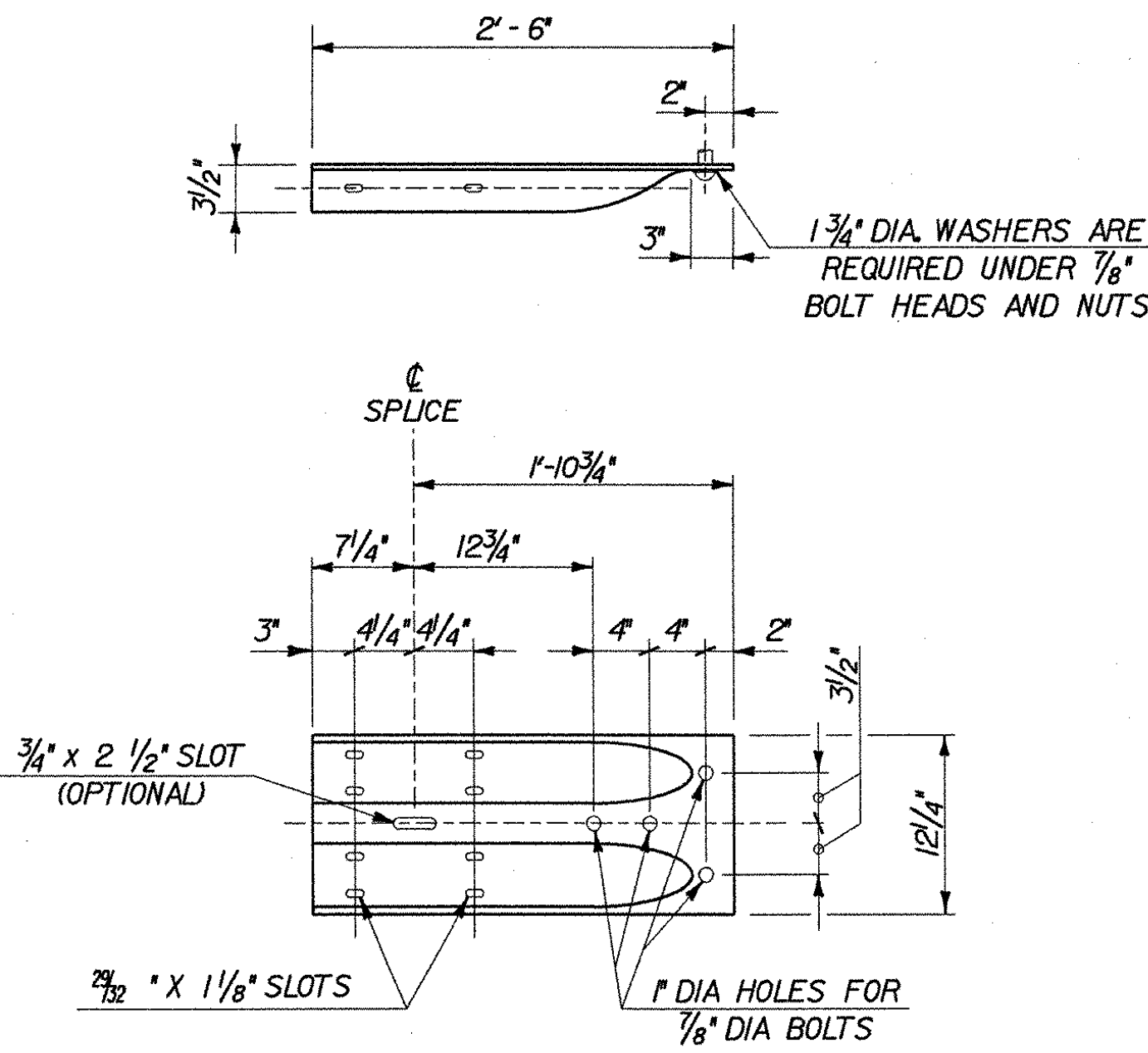
SECTION A-A
NOT TO SCALE
(H-BARS OMITTED FOR CLARITY)



DETAIL A
NOT TO SCALE

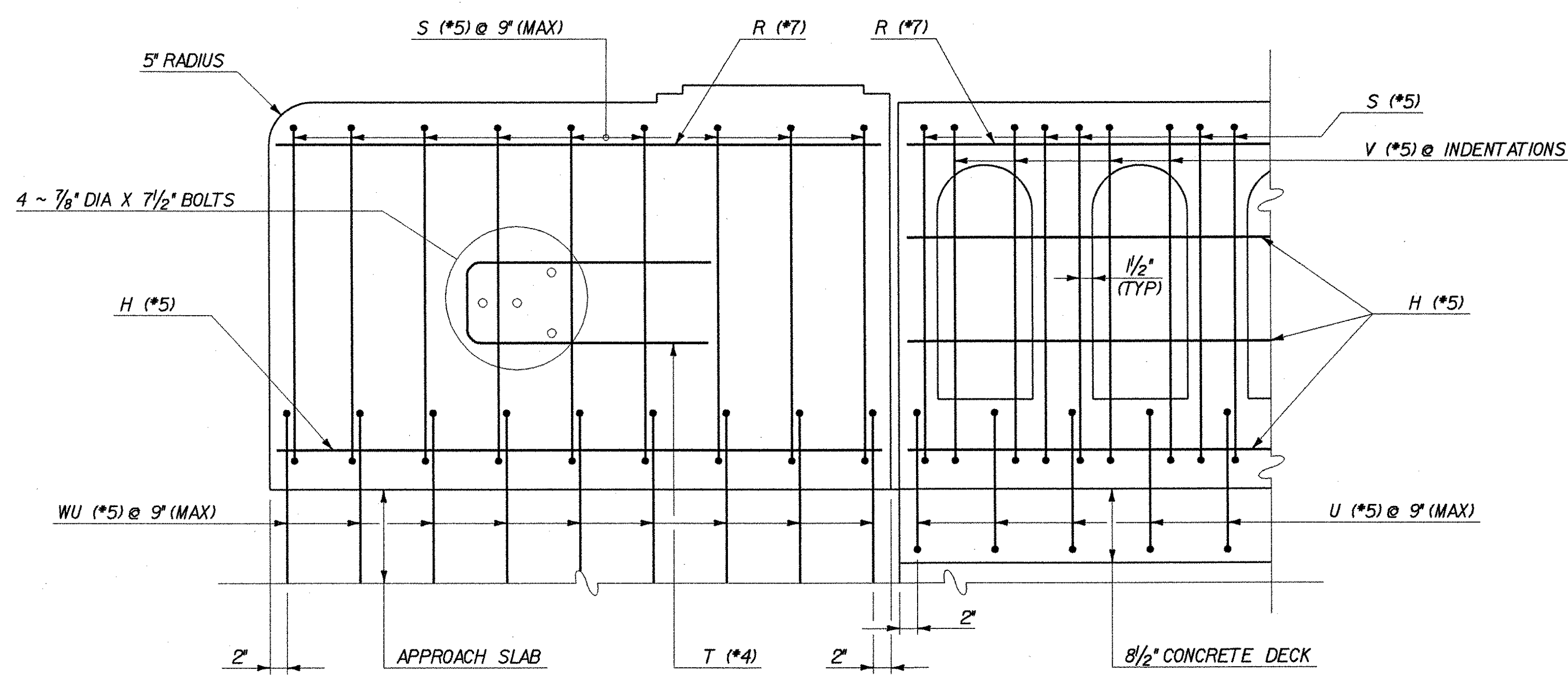
RAIL NOTES

1. ALL PARTS OF THE RAILING INCLUDING REINFORCING, TERMINAL CONNECTOR, BOLTS, NUTS AND WASHERS ARE INCLUDED IN THE PRICE BID PER LINEAR FOOT OF ITEM 525.50, "CAST-IN-PLACE CONCRETE BRIDGE RAILING".
2. ALL CONCRETE FOR RAILING WALL SHALL BE CONCRETE, HPC CLASS A.
3. DIMENSIONS RELATING TO REINFORCING STEEL ARE TO CENTERS OF BARS.
4. SHOP DRAWINGS SHALL BE SUBMITTED FOR THIS RAILING.
5. SEE PLAN AND ELEVATION, SHEET 11 OF 34 FOR PAY LIMIT DIMENSIONS.
6. ALL REINFORCING STEEL SHALL BE EPOXY COATED.
7. HOLES AND RECESSES MUST BE FORMED OR CORED. PERCUSSION DRILLING IS NOT PERMITTED.
8. 1 3/4" DIAMETER WASHERS ARE REQUIRED UNDER 7/8" DIAMETER BOLT HEADS AND NUTS.



TERMINAL CONNECTOR
(ARTBA NO. RWE02b)
SCALE: 1" = 1'-0"

TERMINAL CONNECTOR SHALL RECEIVE THE SAME PROTECTIVE COATING AS THE ATTACHED HEAVY DUTY STEEL BEAM GUARD RAIL



TYPICAL REINFORCING PLACEMENT
SCALE: 1" = 1'-0"
(ON DECK SHOWN, ON SIDEWALK SIMILAR)

STATE OF VERMONT AGENCY OF TRANSPORTATION			
Town Of	LYNDON	Bridge No.	2
Highway No.	ALT VT 122	Log Sta.	
		Surv. Sta.	
CENTER STREET OVER PASSUMPSIC RIVER			
CIP CONCRETE BRIDGE RAILING DETAILS - I			
Designed By	T. GRANT/S. MERKMAN	Drawn By	S. DELIA/S. MERKMAN
Checked By	Date	Bridge Design Supervisor	
T. GRANT/R. WOOD	10/01	M. ZYDEL	Date 10/01
PROJECT	LYNDON	PROJECT NO.	BHO 1447(26)
I.G.C. Info.	m:\549103\6con\z\238t\1.dgn		
Bridge Sheet No.		Sheet	31 of 34

