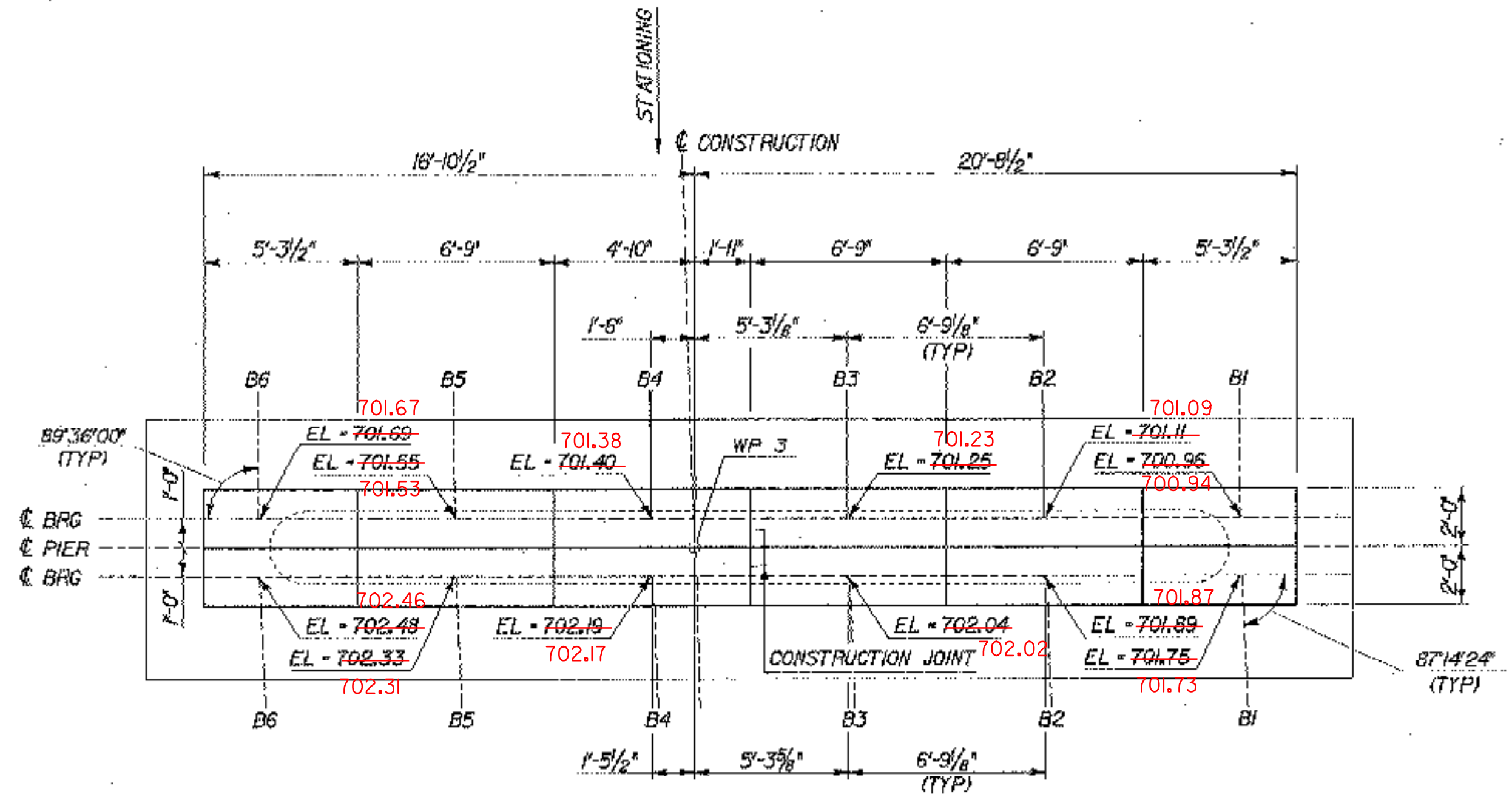
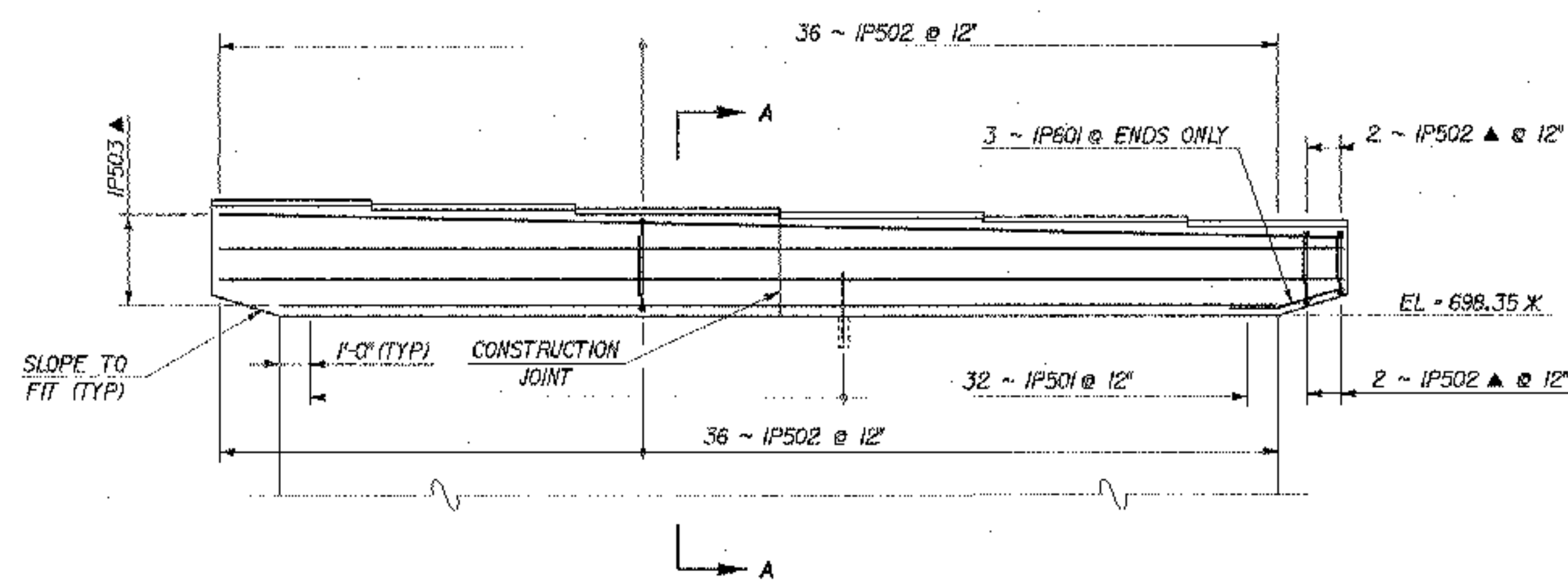


PIER NO. 1 PLAN
SCALE: 1/4" = 1'-0"

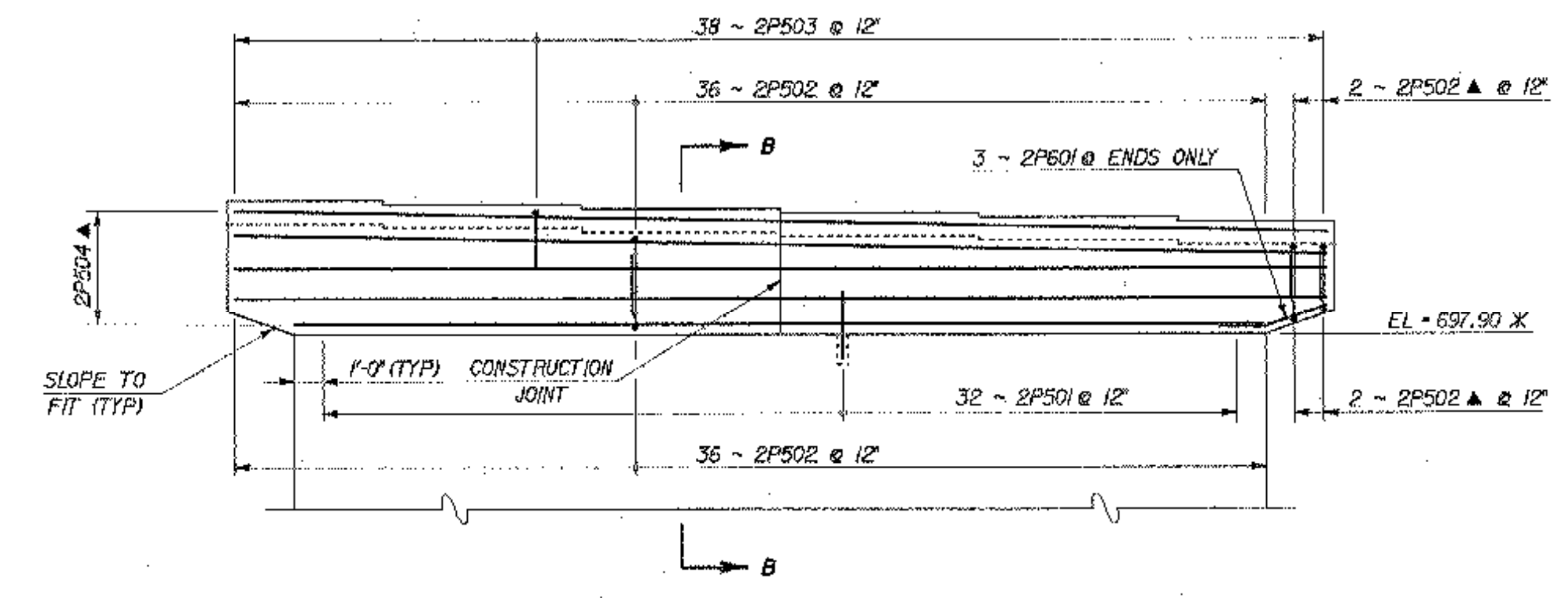


PIER NO. 2 PLAN
SCALE: 1/4" = 1'-0"

SEAT GRADES
ADJUSTED IN FIELD
TO FIT EXISTING
ABUTMENT GRADES



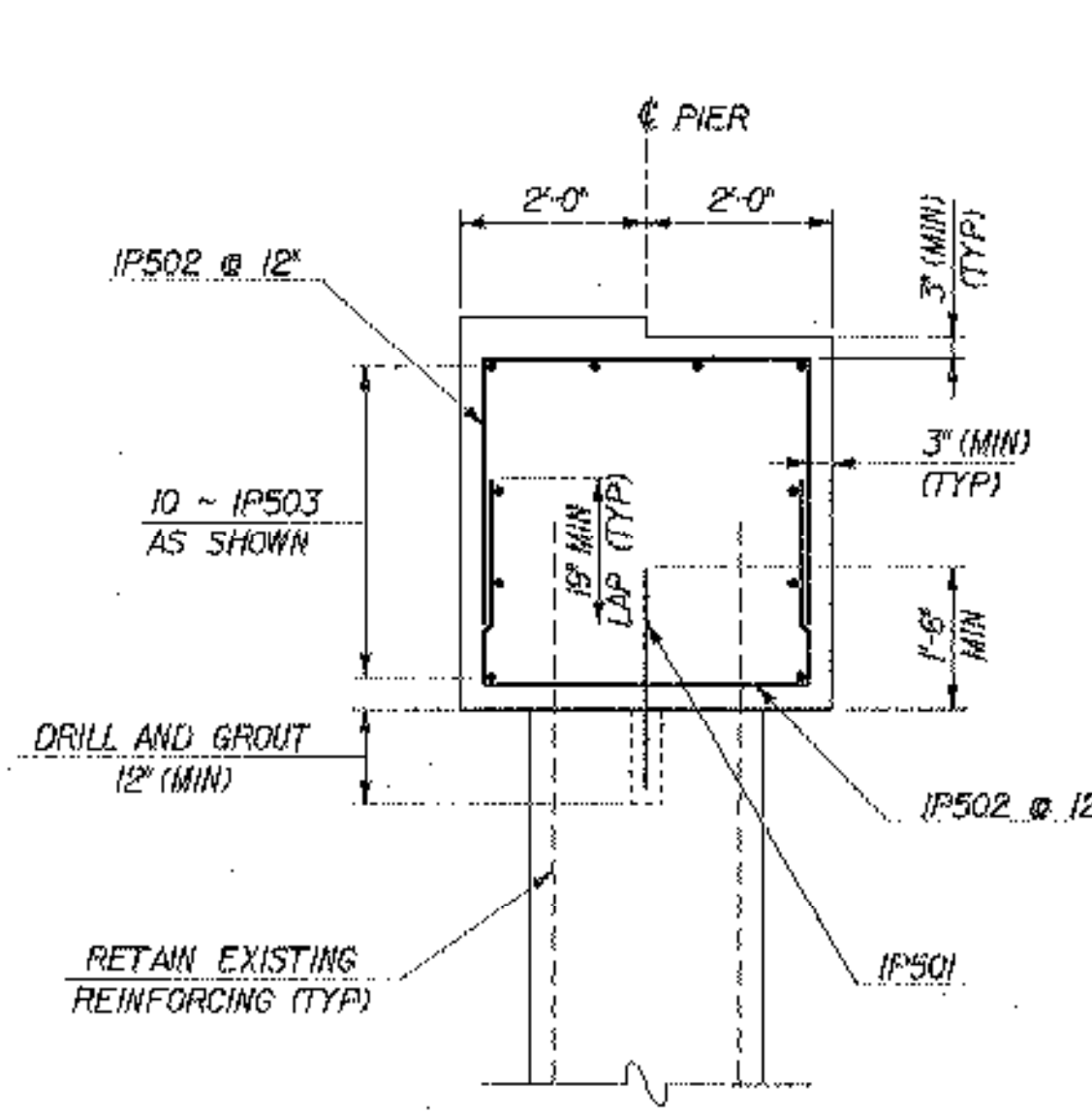
PIER NO. 1 ELEVATION
SCALE: 1/4" = 1'-0"



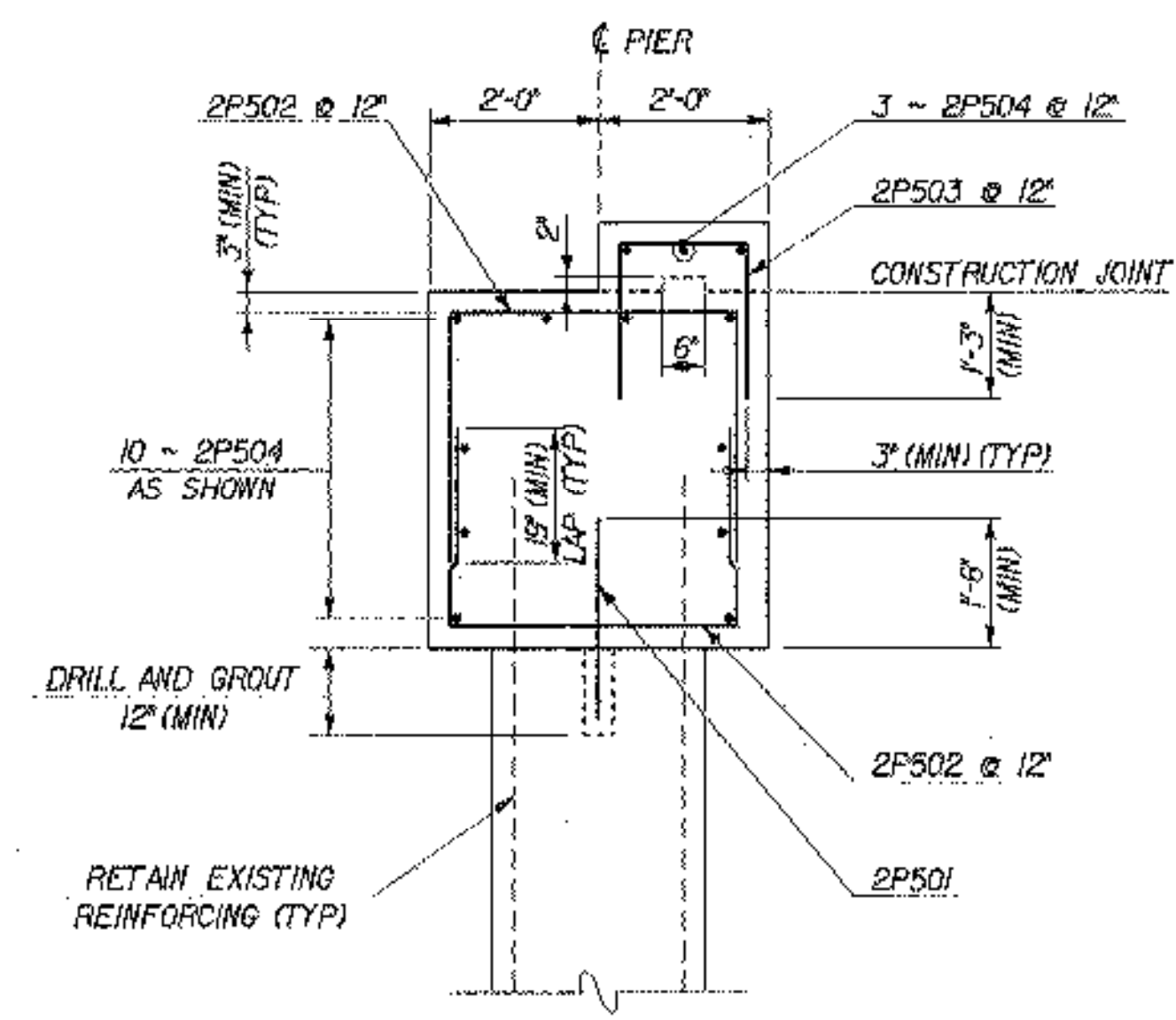
PIER NO. 2 ELEVATION
SCALE: 1/4" = 1'-0"

REINFORCING NOTES

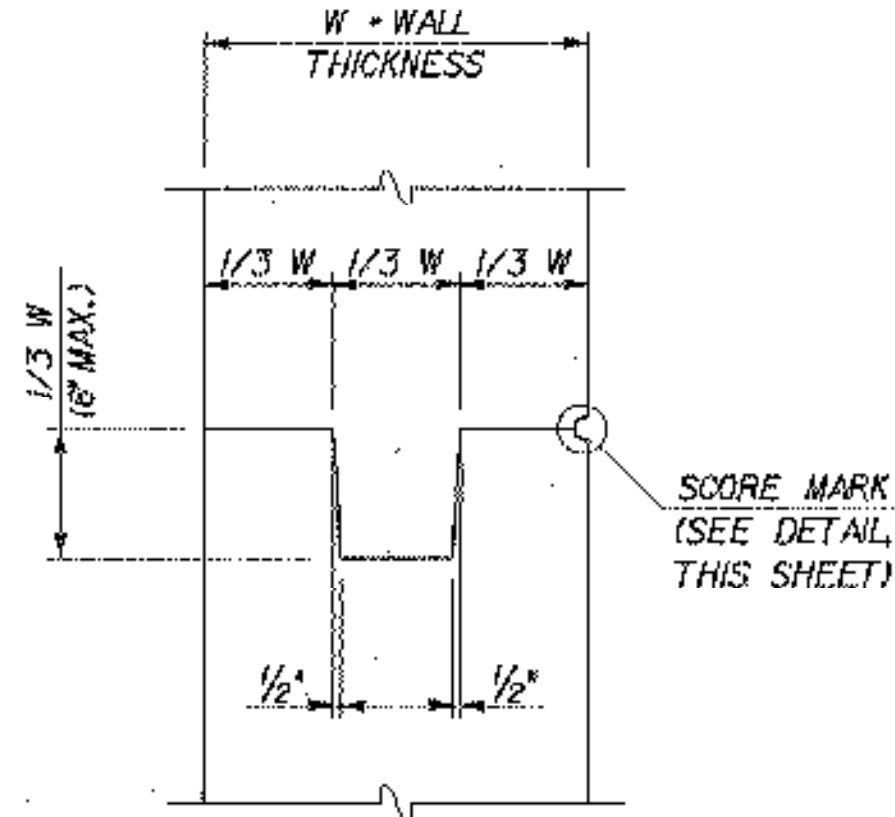
- N.F. = NEAR FACE
F.F. = FAR FACE
E.F. = EACH FACE
E.W. = EACH WAY
▲ = CUT TO FIT IN FIELD
- X = APPROXIMATE EXISTING ELEVATION OR DIMENSION



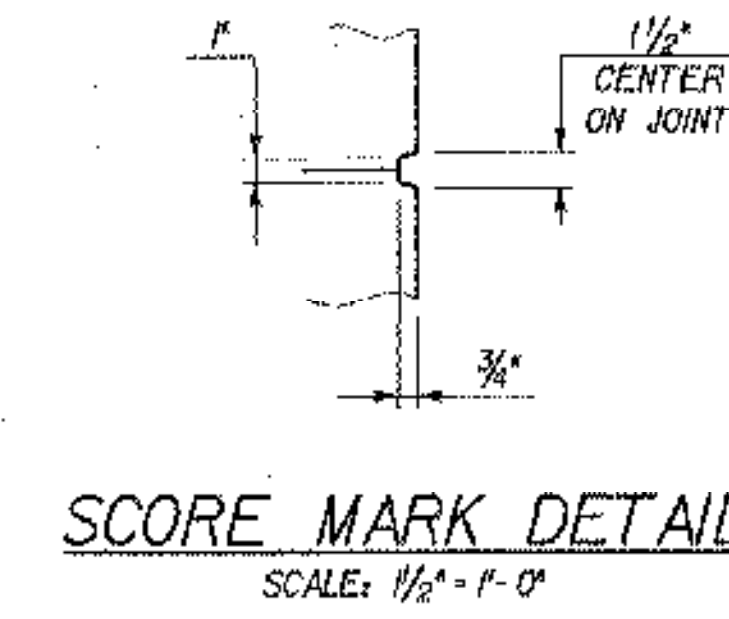
SECTION A-A
SCALE: 1/2" = 1'-0"



SECTION B-B
SCALE: 1/2" = 1'-0"



TYPICAL CONCRETE CONSTRUCTION JOINT
SCALE: 1" = 1'-0"



SCORE MARK DETAIL
SCALE: 1/2" = 1'-0"

STATE OF VERMONT AGENCY OF TRANSPORTATION	
Town Of LYNDON	Bridge No. 2
Highway No. ALT VT 122	Log Sta. Surv. Sta.
CENTER STREET OVER PASSUMPSIC RIVER	
PIER DETAILS	
Designed By T. GRANT / S. MERKMAN	Drawn By S. DELIA / S. MERKMAN
Checked By T. GRANT / R. WOOD	Bridge Design Supervisor M. ZYDEL
PROJECT LYNDON	PROJECT NO. BHO 1447(26)
I.G.C. Info. mn5491036aanfzj238pdf.dgn	
Bridge Sheet No. 	Sheet 29 of 34