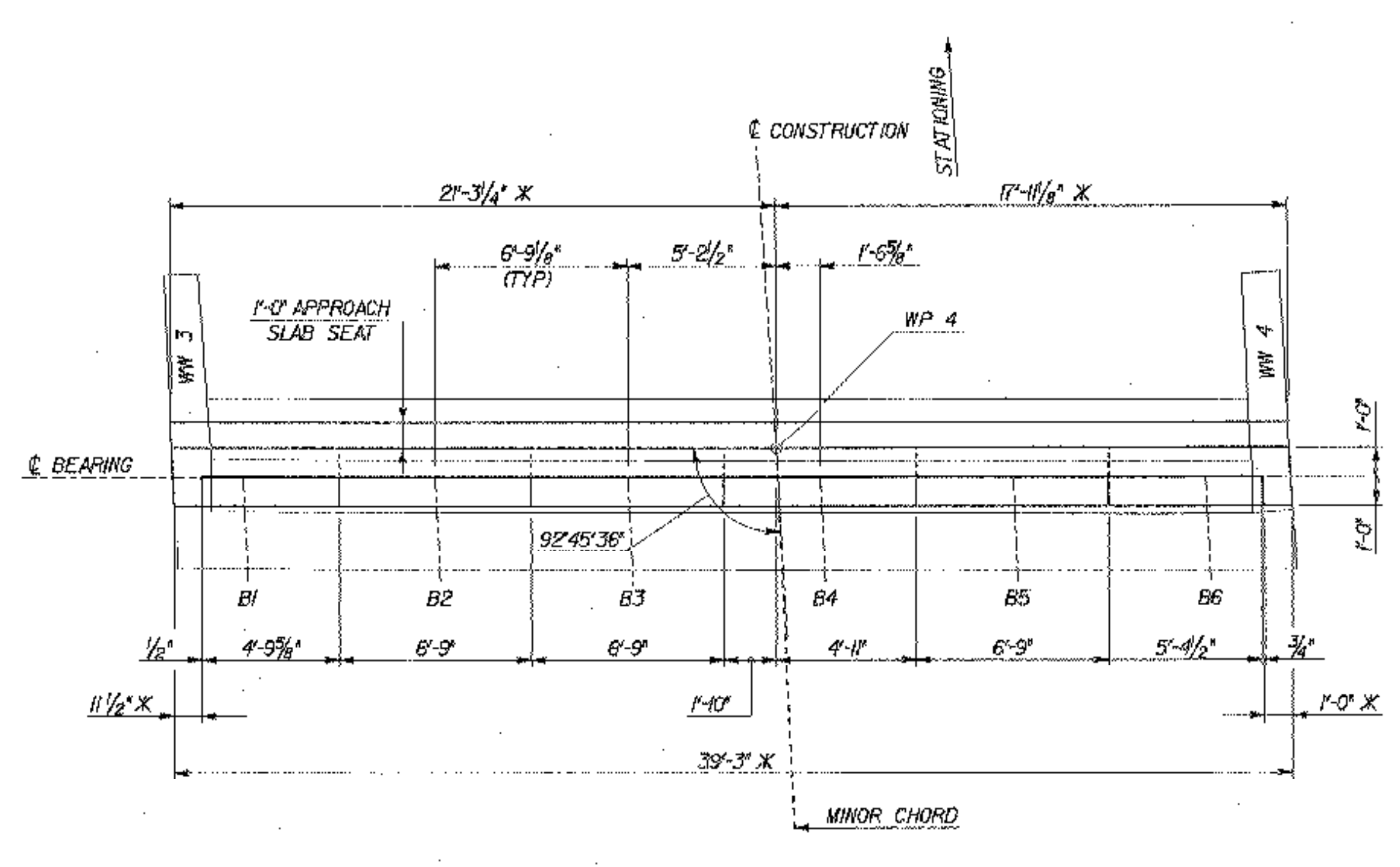
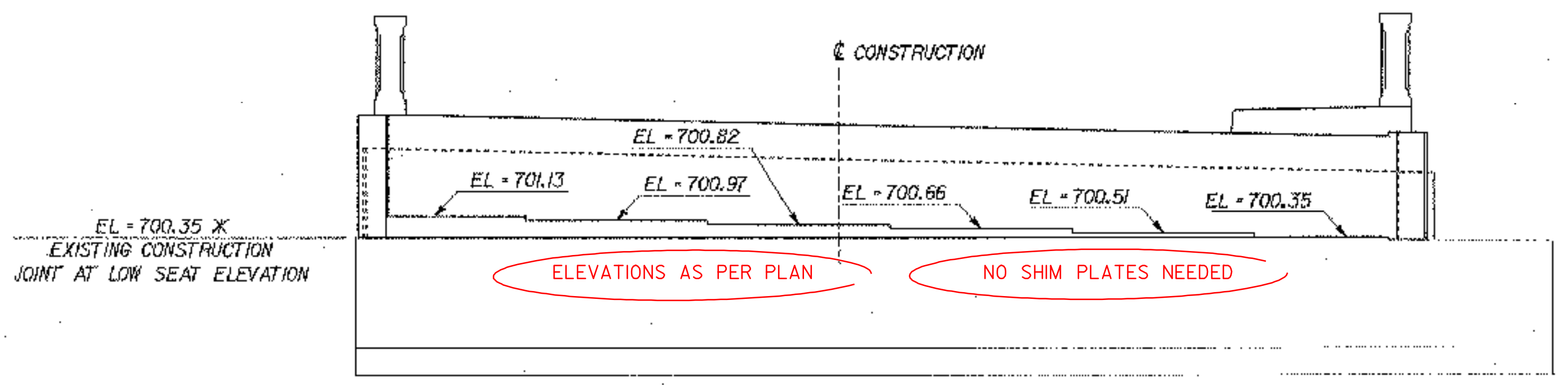


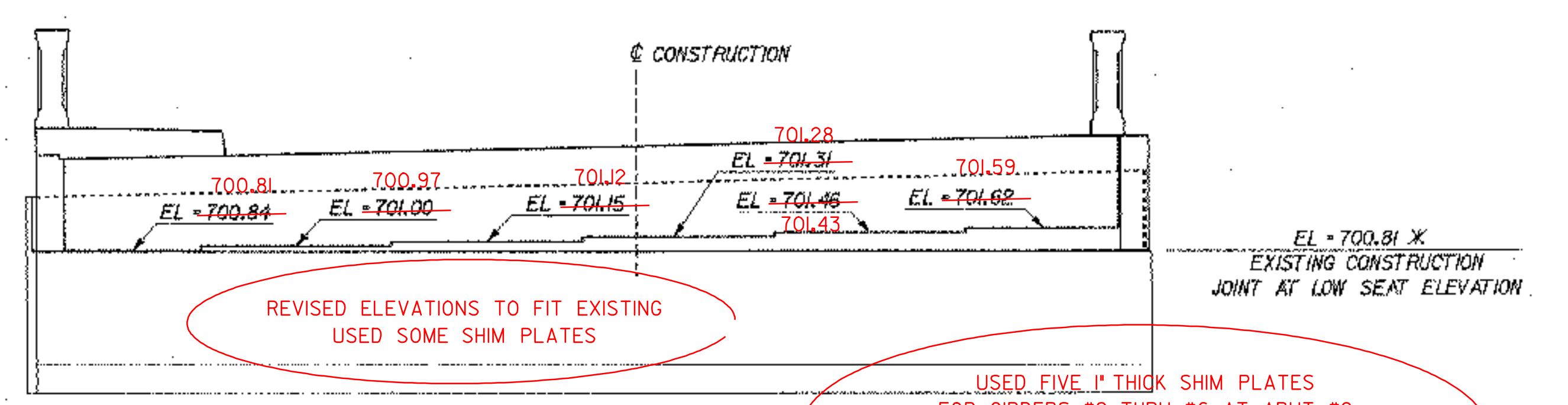
**ABUTMENT NO. 1 PLAN**  
SCALE: 1/4" = 1'-0"



**ABUTMENT NO. 2 PLAN**  
SCALE: 1/4" = 1'-0"

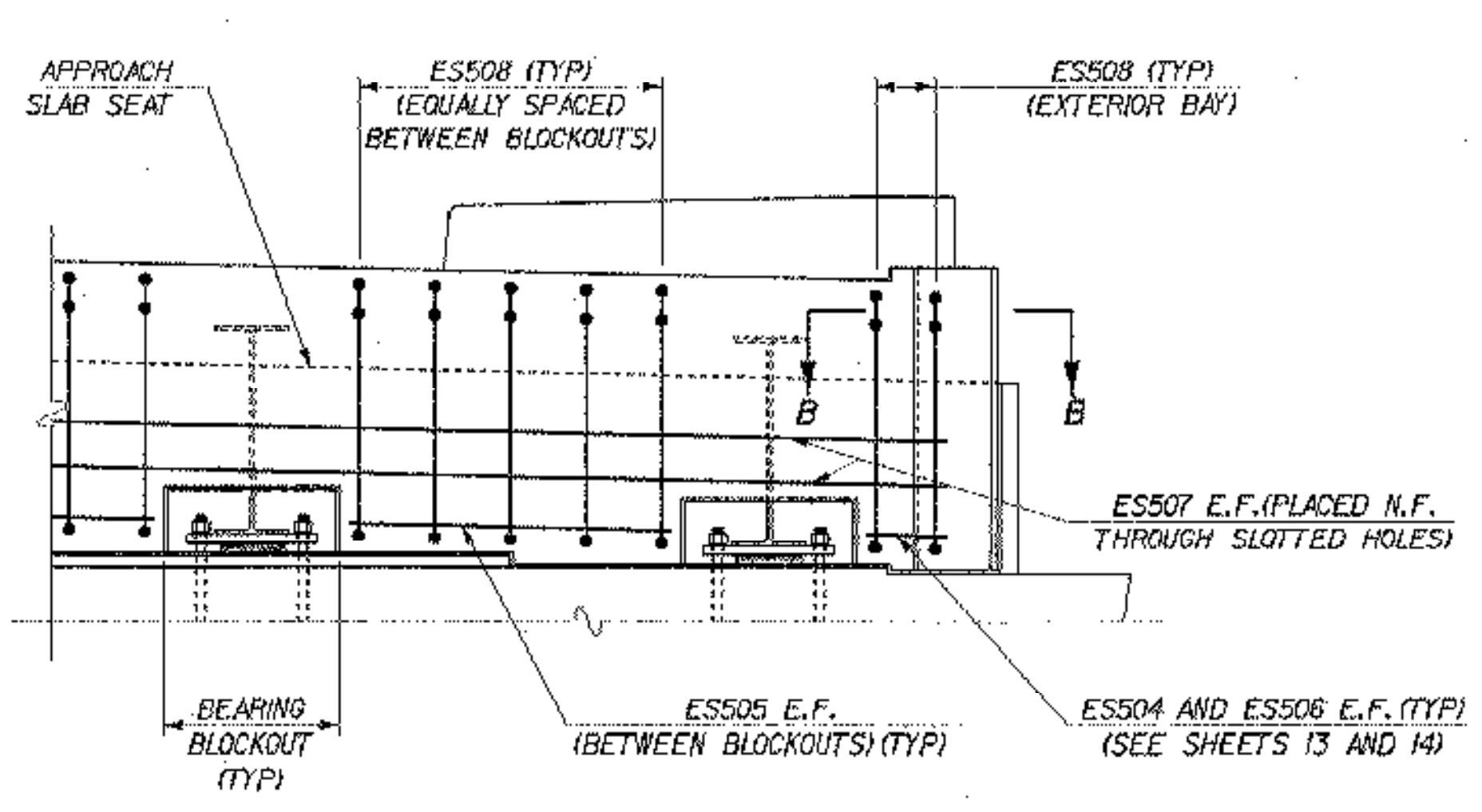


**ABUTMENT NO. 1 ELEVATION**  
SCALE: 1/4" = 1'-0"

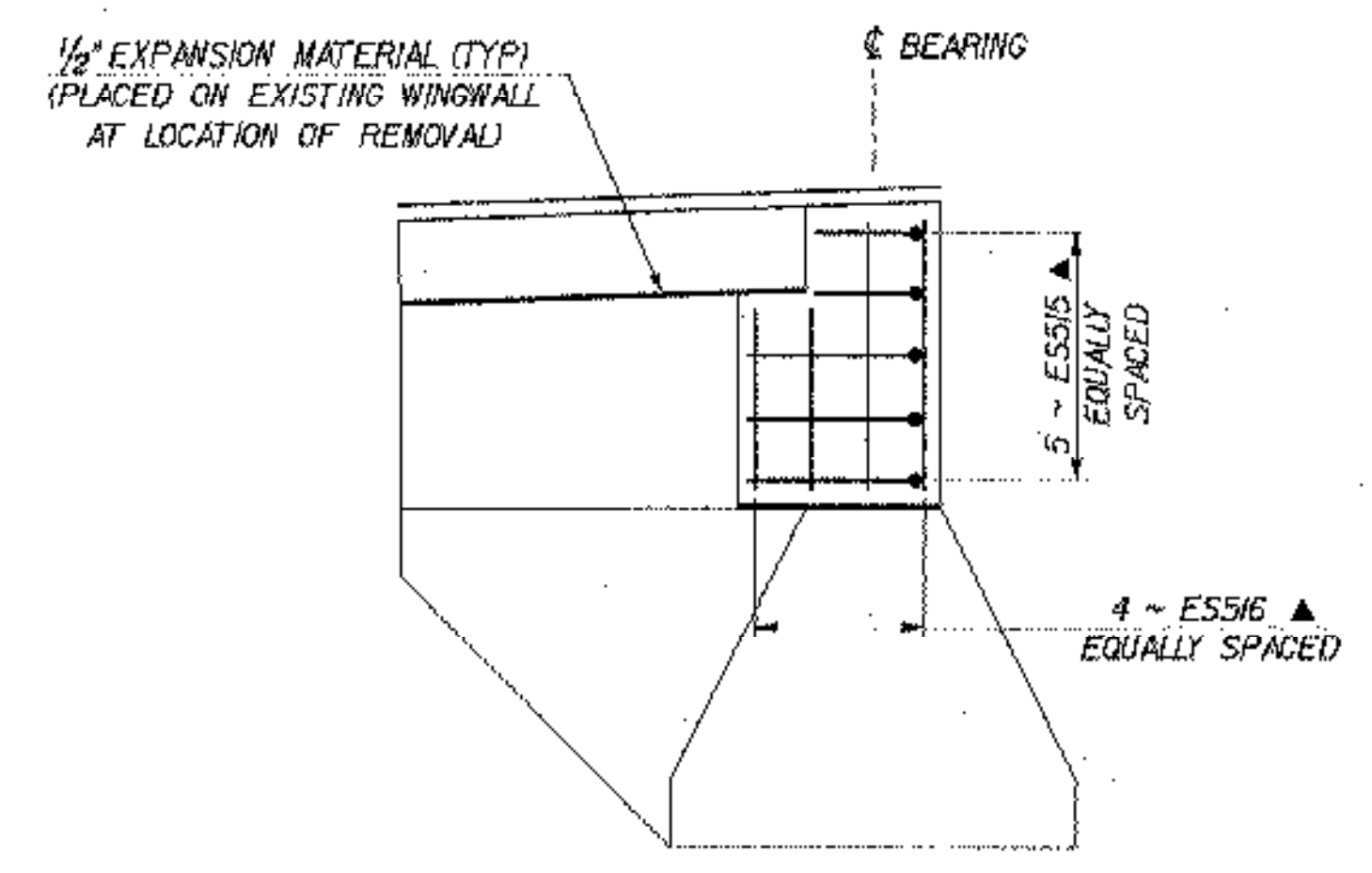


**ABUTMENT NO. 2 ELEVATION**  
SCALE: 1/4" = 1'-0"

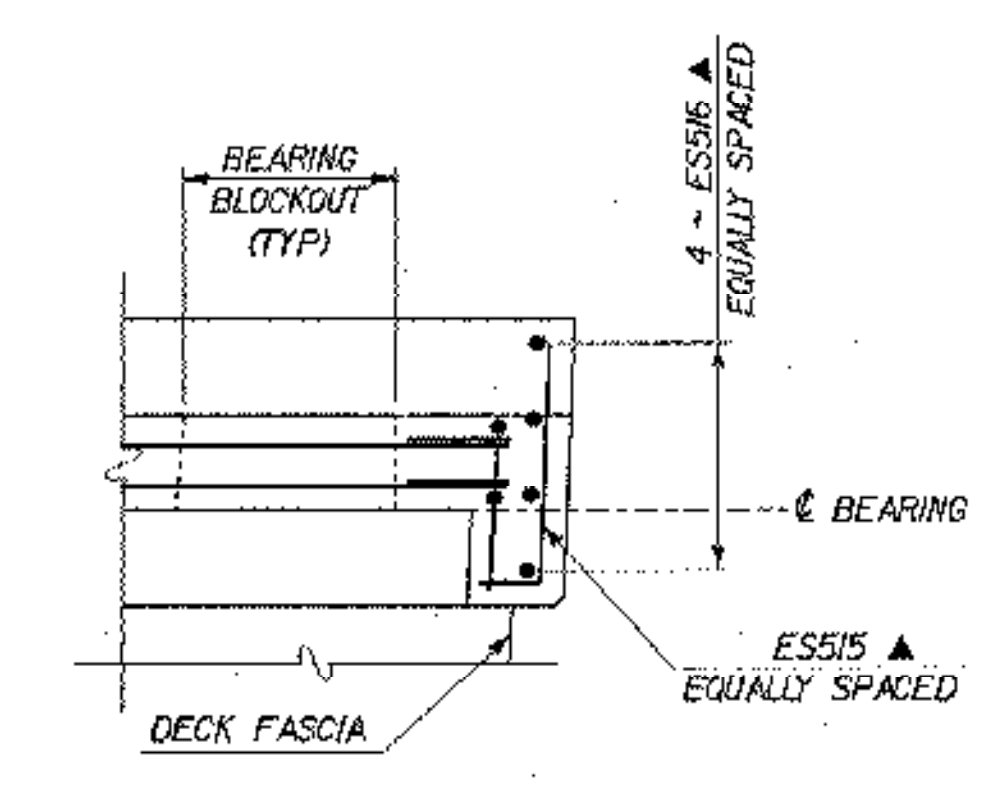
USED FIVE 1" THICK SHIM PLATES FOR GIRDERS #2 THRU #6 AT ABUT #2 THE PLATES ARE SAME SIZE AS PREFORMED FABRIC PADS (8' x 10')



**TYPICAL CURTAIN WALL ELEVATION**  
SCALE: 1/2" = 1'-0"



**TYPICAL SECTION A-A**  
SCALE: 3/8" = 1'-0"



**TYPICAL SECTION B-B**  
SCALE: 1/2" = 1'-0"

**REINFORCING NOTES**

- 1. N.F. - NEAR FACE
- F.F. - FAR FACE
- E.F. - EACH FACE
- ▲ - CUT TO FIT IN FIELD
- 2. X - APPROXIMATE EXISTING ELEVATION OR DIMENSION

<b>STATE OF VERMONT AGENCY OF TRANSPORTATION</b>			
Town Of	LYNDON	Bridge No.	2
Highway No.	ALT VT 122	Log Sta.	
		Surv. Sta.	
<b>CENTER STREET OVER PASSUMPSIC RIVER</b>			
<b>ABUTMENT DETAILS</b>			
Designed By	T. GRANT	Drawn By	S. DELIA
Checked By	T. GRANT	Bridge Design Supervisor	M. ZYDEL
	Date 10/01	Date	10/01
PROJECT	LYNDON	PROJECT NO.	BHO 1447(26)
I.G.C. Info.	MMS4910316conrz1238ad.dgn		
Bridge Sheet No.		Sheet	27 of 34