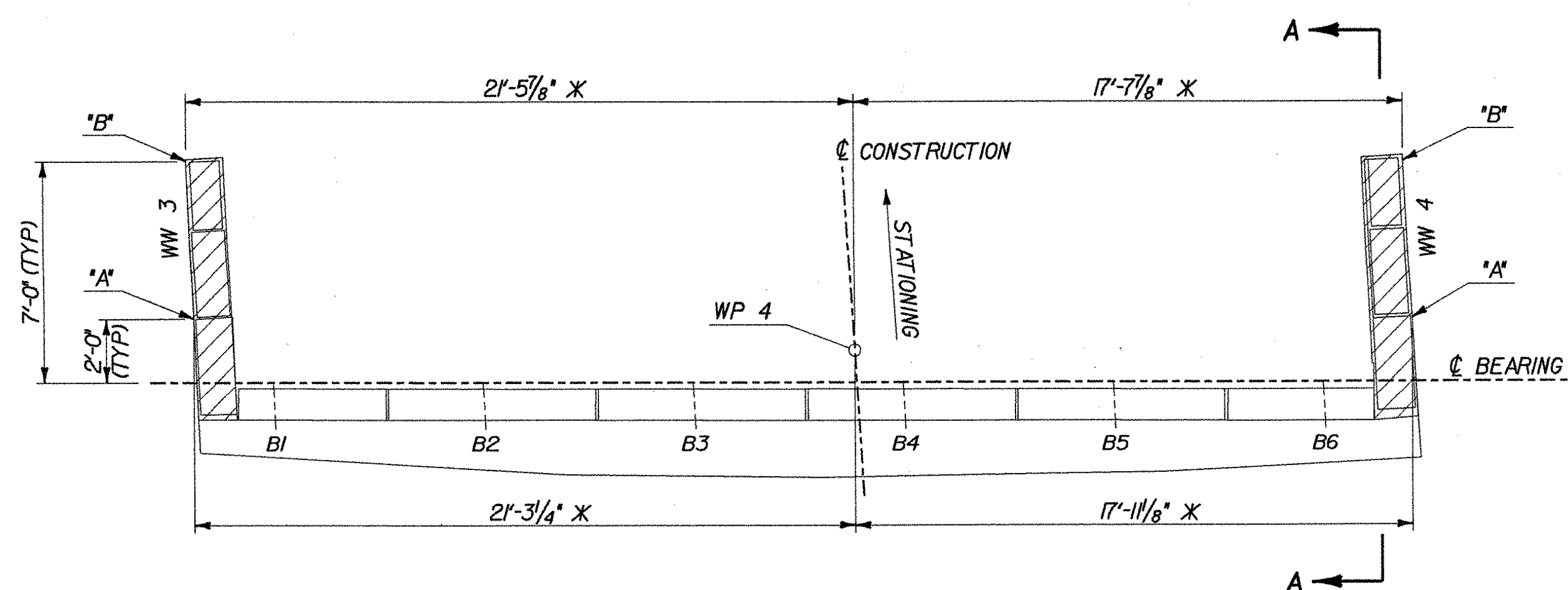


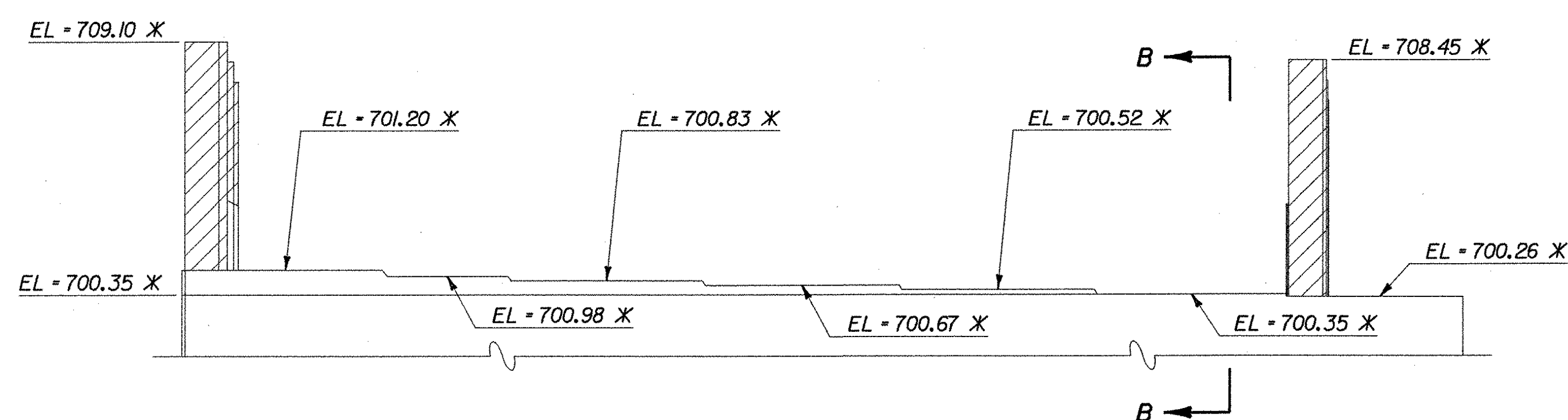
ABUTMENT NO. 1 PLAN

SCALE: 1/4" = 1'-0"



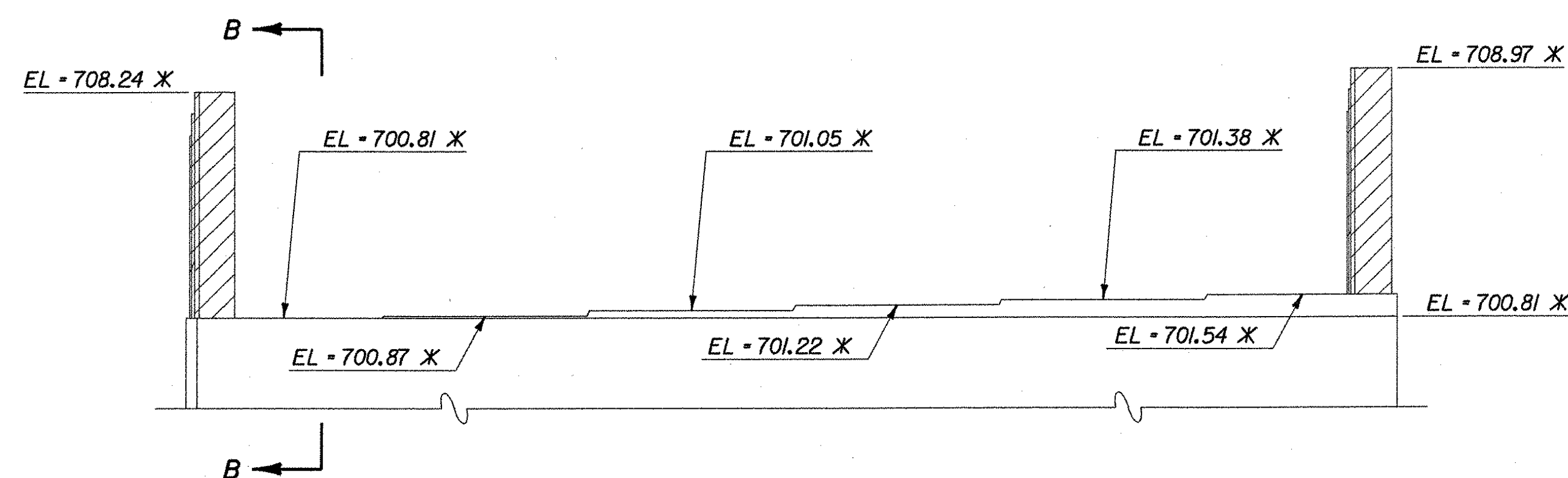
ABUTMENT NO. 2 PLAN

SCALE: 1/4" = 1'-0"



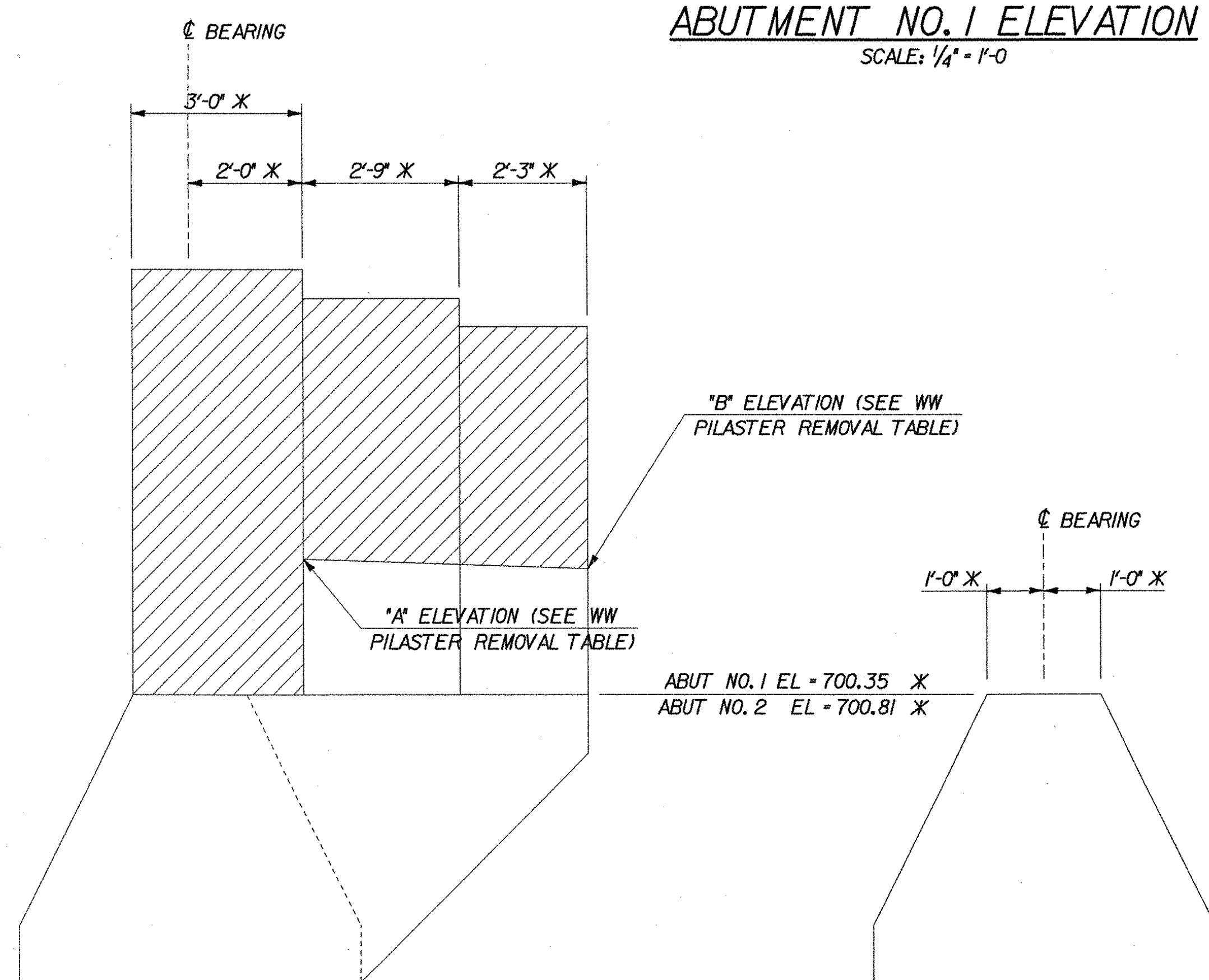
ABUTMENT NO. 1 ELEVATION

SCALE: 1/4" = 1'-0"



ABUTMENT NO. 2 ELEVATION

SCALE: 1/4" = 1'-0"



TYPICAL SECTION A-A

SCALE: 1/2" = 1'-0"

TYPICAL SECTION B-B

SCALE: 1/2" = 1'-0"

REMOVAL NOTES

1. REMOVAL OF EXISTING BRIDGE PAVEMENT SHALL BE PAID AS ITEM 529J0, REMOVAL OF BRIDGE PAVEMENT.
2. ITEM 529.20, PARTIAL REMOVAL OF STRUCTURE, SHALL INCLUDE:
 - a. REMOVAL OF EXISTING BRIDGE RAILING, CONCRETE BRUSH CURB, SIDEWALK AND CONCRETE BRIDGE DECK.
 - b. REMOVAL OF ALL STEEL STRUCTURAL BEAMS, DIAPHRAGMS AND CROSS FRAMES.
 - c. REMOVAL OF ALL THE BEARING DEVICES.
 - d. REMOVAL OF PORTIONS OF THE EXISTING ABUTMENTS AND PIER AS SHOWN ON THE PLANS AND DIRECTED BY THE ENGINEER.
 - e. ERECTION, MAINTENANCE, AND REMOVAL OF TEMPORARY STRUCTURES TO PREVENT DEBRIS FROM FALLING INTO THE PASSUMPSIC RIVER.
3. THE CONTRACTOR'S METHODS FOR PARTIAL REMOVAL OF THE EXISTING STRUCTURES SHALL BE APPROVED BY THE ENGINEER PRIOR TO ANY REMOVAL WORK.
4. LIMITS OF REMOVAL ARE APPROXIMATE. THE ENGINEER WILL ESTABLISH ACTUAL LIMITS AFTER A COOPERATIVE INSPECTION BY THE CONTRACTOR AND THE ENGINEER. EXISTING ELEVATIONS SHALL BE FIELD VERIFIED TO ENSURE THE REMOVAL LIMITS ARE ADEQUATE TO OBTAIN THE REQUIRED DIMENSIONS AND ELEVATIONS OF THE NEW CONSTRUCTION.
5. SAW CUTS SHALL BE 1" DEEP ALONG ALL EXPOSED REMOVAL LINES WHERE NEW CONCRETE IS TO BE PLACED AGAINST EXISTING CONCRETE. ALL COSTS SHALL BE INCLUDED IN ITEM 529.20, PARTIAL REMOVAL OF STRUCTURE.
6. CARE SHALL BE TAKEN TO AVOID MECHANICAL DAMAGE TO EXISTING REINFORCING STEEL WHICH IS TO BE INCORPORATED INTO THE NEW MASONRY. EXISTING REINFORCING STEEL TO BE INCORPORATED INTO THE NEW MASONRY SHALL BE FREE OF LOOSE RUST AND LATTANCE.
7. EXISTING REINFORCING STEEL THAT WILL NOT BE INCORPORATED INTO THE NEW MASONRY SHALL BE REMOVED A MINIMUM OF 1" BEYOND THE MASONRY SURFACE. CAVITIES PRODUCED BY REMOVAL SHALL BE REPAIRED AS DIRECTED BY THE ENGINEER WITH COSTS PAID FOR PER ITEM 529.20, PARTIAL REMOVAL OF STRUCTURE.
8. ROUGHEN SURFACE OF EXISTING CONCRETE TO A TOTAL AMPLITUDE OF 1/4" WHERE IT IS TO BE IN CONTACT WITH NEW SEAT CONCRETE.
9. EXISTING CONCRETE SURFACES WHICH ARE TO BE IN CONTACT WITH CORK OR EXPANSION MATERIAL SHALL BE CUT OR GROUND TO HAVE A SMOOTH SURFACE.

WW PILASTER REMOVAL TABLE

WW	'A' ELEV	'B' ELEV
1	702.70	702.53
2	703.61	703.43
3	702.69	702.31
4	703.60	703.42

LEGEND

* - APPROXIMATE EXISTING ELEVATION OR DIMENSION

REMOVAL OF EXISTING CONCRETE

STATE OF VERMONT AGENCY OF TRANSPORTATION

Town Of	LYNDON	Bridge No.	2
Highway No.	ALT VT 122	Log Sta.	
		Surv. Sta.	
CENTER STREET OVER PASSUMPSIC RIVER			
ABUTMENT REMOVAL DETAILS			
Designed By	T. GRANT/S. MERKWAN	Drawn By	S. DELIA/S. MERKWAN
Checked By	T. GRANT/R. WOOD	Date	10/01
		Bridge Design Supervisor	M. ZYDEL
		Date	10/01
PROJECT	LYNDON	PROJECT NO.	BHO 1447(26)
I.G.C. Info.	m:\549103\6cont\z\239arr.dgn		
Bridge Sheet No.		Sheet	26 of 34