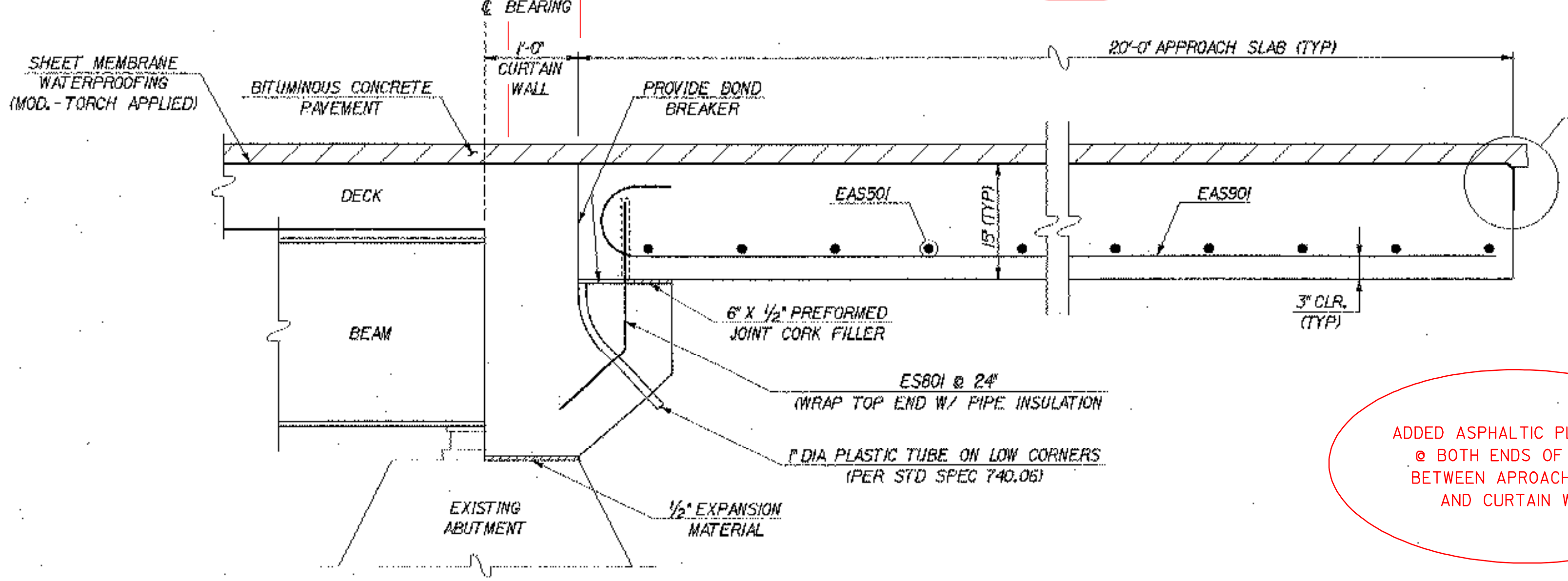


APPROACH SLAB NO. 1 PLAN
SCALE: 1/4" = 1'-0"

APPROACH SLAB NO. 2 PLAN
SCALE: 1/4" = 1'-0"

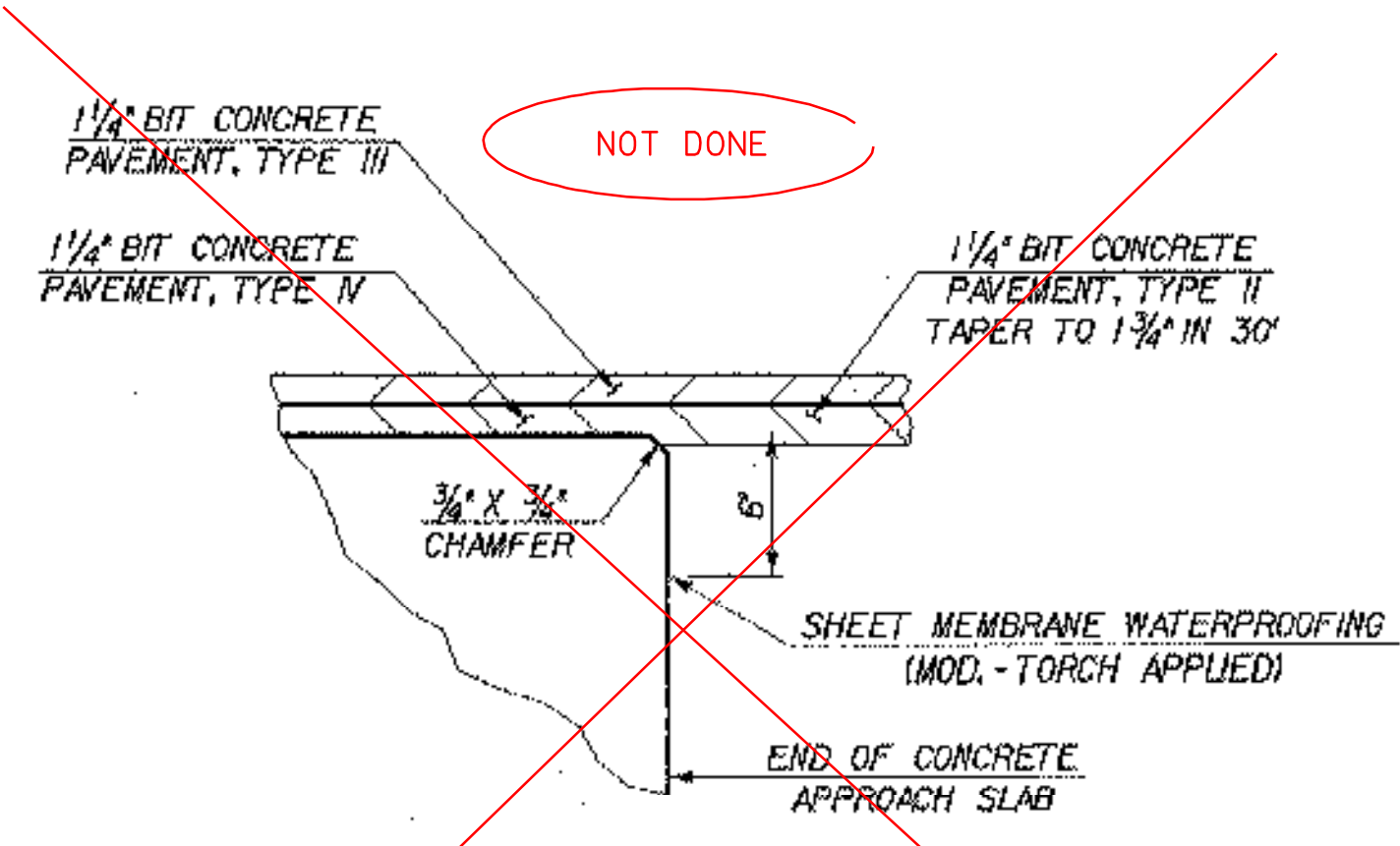
END OF MEMBRANE STAYED 9" BACK FOR PLUG JOINT AT BOTH ENDS OF BRIDGE

NOTE - MEMBRANE WAS NOT PLACED ON APPROACH SLABS PER PROJECT MANAGER



TYPICAL APPROACH DETAIL
SCALE: 1" = 1'-0"
(PERPENDICULAR TO CENTERLINE BEARING)

ADDED ASPHALTIC PLUG JOINT @ BOTH ENDS OF BRIDGE BETWEEN APPROACH SLAB AND CURTAIN WALL



DETAIL FOR SHEET MEMBRANE AT APPROACH SLAB ENDS
SCALE: 1/2" = 1'-0"

NOTES

1. FOR SECTIONS D-D AND G-G, SEE SHEET 32.

STATE OF VERMONT AGENCY OF TRANSPORTATION	
Town Of LYNDON	Bridge No. 2
Highway No. ALT VT 122	Log Sta.
CENTER STREET OVER PASSUMPSIC RIVER APPROACH SLAB DETAILS	
Designed By T. GRANT / S. MERRMAN	Drawn By S. DELIA / S. MERRMAN
Checked By T. GRANT / R. WOOD	Bridge Design Supervisor
Date 10/01	Date 10/01
PROJECT LYNDON	PROJECT NO. BHO 1447(26)
I.G.C. Info. mi\549103\6con\z\238ape.dgn	
Bridge Sheet No.	Sheet 23 of 34