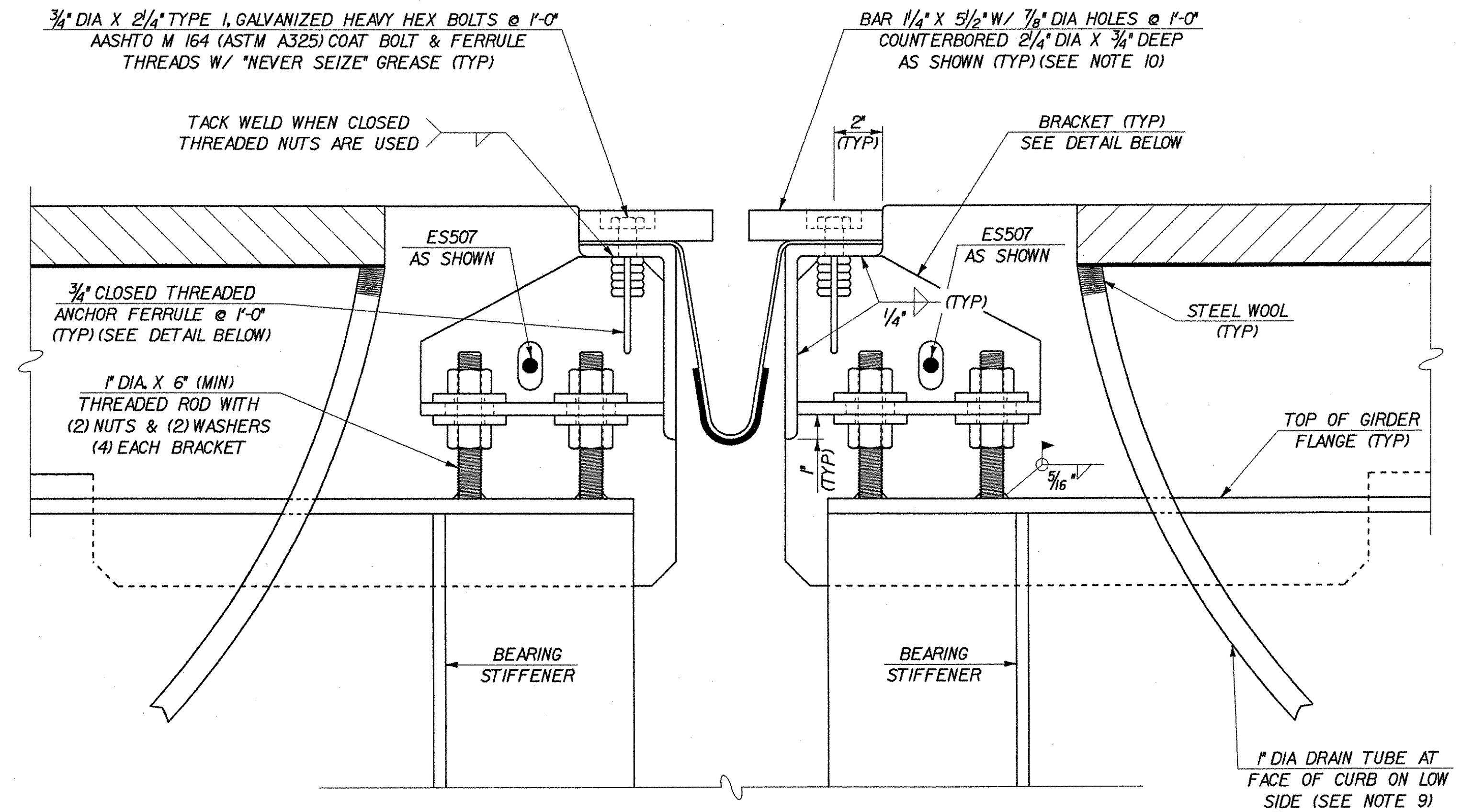


TYPICAL SECTION BETWEEN GIRDERS

SCALE: 3\"/>

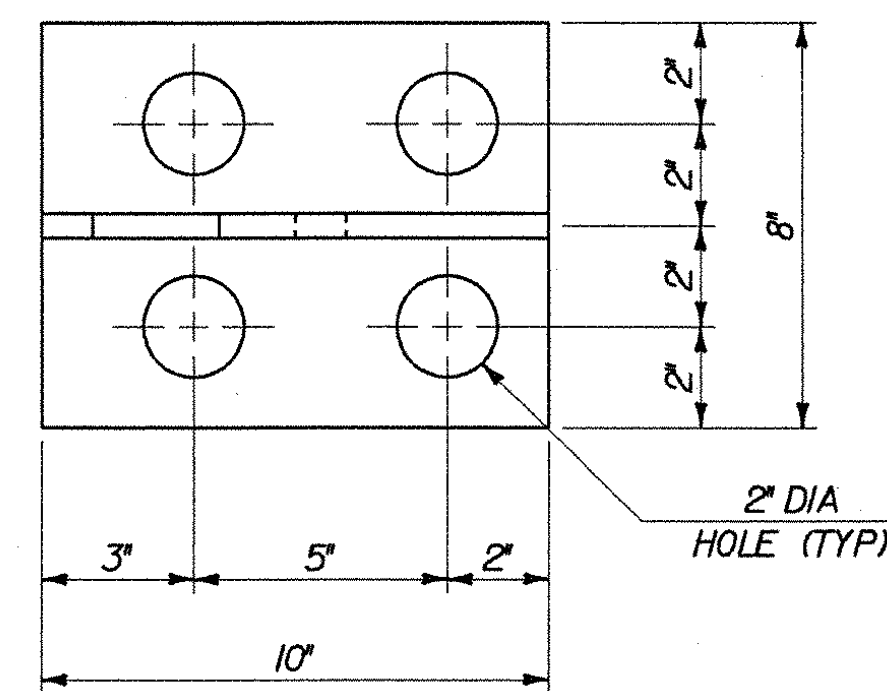


TYPICAL SECTION AT GIRDERS

SCALE: 3\"/>

EXPANSION JOINT NOTES

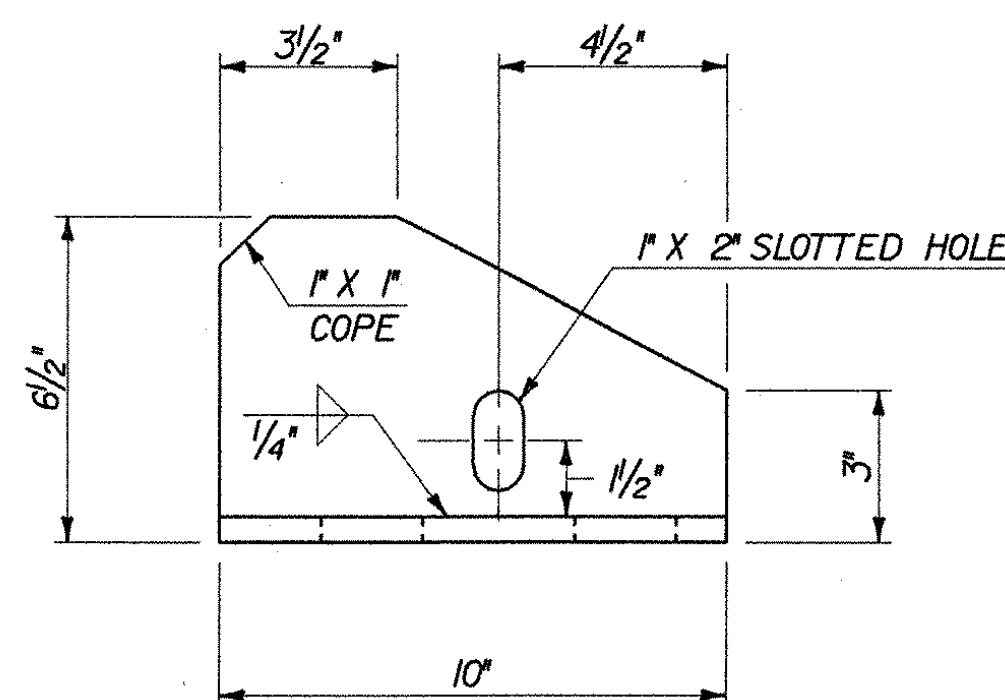
1. DETAILS ON THIS SHEET ARE FOR ITEM 516.10, "BRIDGE EXPANSION JOINT".
2. PREFORMED FABRIC MATERIAL SHALL BE CONTINUOUS AND SHALL CONFORM TO SUBSECTION 707.07 OF THE STANDARD SPECIFICATIONS.
3. BUTYL RUBBER TAPE SHALL CONFORM TO AASHTO SPECIFICATION M-198, TYPE II.
4. THE FINAL FINISH OF THE EXPANSION DEVICE SHALL BE COVERED DURING THE PLACING OF BRIDGE DECK CONCRETE.
5. ALL STEEL COMPONENTS SHALL BE AASHTO M270 GRADE 36 GALVANIZED OR METALIZED AS PER SUBSECTION 516.04. THREADED RODS AND NUTS SHALL CONFORM TO SUBSECTION 714.04.
6. THE ITEM "BRIDGE EXPANSION JOINT" SHALL INCLUDE THE FABRICATION AND ERECTION OF THE COMPLETE JOINT ASSEMBLY INCLUDING ALL STEEL PLATES, BRACKETS, ANGLES, WELDED STUDS OR RODS, PREFORMED FABRIC DRAIN TROUGH MATERIAL AND PLASTIC DRAIN TUBES, BUTYL RUBBER TAPE AND ANY OTHER MISCELLANEOUS MATERIAL NECESSARY TO INSTALL JOINT.
7. THE 4 X 8 X 1/2\"/>
8. COAT CONCRETE CONTACT SURFACES WITH EPOXY BONDING COMPOUND MEETING THE REQUIREMENTS OF SUBSECTION 719.02 OF THE STANDARD SPECIFICATIONS. PAYMENT SHALL BE INCLUDED IN THE UNIT PRICE BID FOR ITEM 516.10, "BRIDGE EXPANSION JOINT".
9. A 1\"/>
10. FILL COUNTERBORED HOLES WITH HOT POURED JOINT SEALER AFTER BOLT INSTALLATION. PAYMENT FOR THE WORK SHALL BE SUBSIDIARY TO ITEM 516.10.
11. A DRIP BEAD OF 1/4\"/>
12. FABRIC TROUGH SHALL BE THOROUGHLY CLEANED AND FLUSHED AFTER PAVING OPERATION.
13. THE EXPANSION JOINT SHALL BE SHOP ASSEMBLED AND SHIPPED AS ONE UNIT.
14. THE FABRICATOR SHALL PROVIDE A SLIP RESISTANT FINISH ON THE SURFACE OF THE SIDEWALK TOP PLATES. THE FINISH SHALL INCORPORATE SAND, GRIT, OR OTHER APPROVED MATERIAL, AND SHALL BE SPECIFIED ON THE SHOP DRAWINGS. ALL ASSOCIATED COSTS SHALL BE INCIDENTAL TO ITEM 516.10, BRIDGE EXPANSION JOINT.



BRACKET PLAN

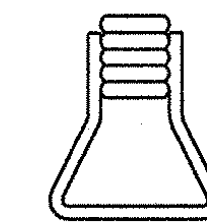
SCALE: 3\"/>

ALL PLATES 1/2\"/>



BRACKET ELEVATION

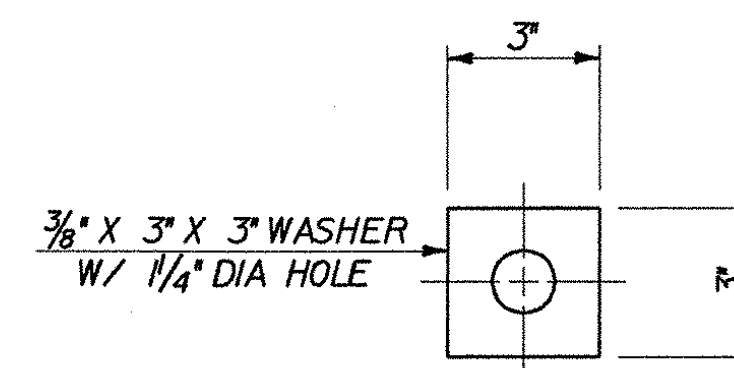
SCALE: 3\"/>



ANCHOR FERRULE DETAIL

SCALE: 3\"/>

NOTE: CLOSED THREADED FERRULE NUTS WITHOUT ANCHOR LOOPS MAY BE USED - PER MANUFACTURER (DAYTON/RICHMOND) OR APPROVED EQUAL



WASHER FOR BRACKET

SCALE: 3\"/>

PIER NO. 1

PIER NO. 2

TEMP	"A" DIST
0° F	1/2"
15° F	7/16"
30° F	3/8"
45° F	9/16"
60° F	1/4"
75° F	3/16"
90° F	1/8"
105° F	1/16"

TEMP	"A" DIST
0° F	1 1/16"
15° F	1 5/16"
30° F	1 3/16"
45° F	1 1/16"
60° F	9/16"
75° F	7/16"
90° F	1/4"
105° F	1/8"

"A" IS THE SETTING BEFORE DEAD LOADS ARE IN PLACE

STATE OF VERMONT AGENCY OF TRANSPORTATION			
Town Of	LYNDON	Bridge No.	2
Highway No.	ALT VT 122	Log Sta.	
CENTER STREET OVER PASSUMPSIC RIVER			
EXPANSION JOINT DETAILS - 2			
Designed By	T. GRANT/S. MERKMAN	Drawn By	S. DELIA/S. MERKMAN
Checked By	T. GRANT/R. WOOD	Date	10/01
		Bridge Design Supervisor	M. ZYDEL
		Date	10/01
PROJECT	LYNDON	PROJECT NO.	BHO 1447(26)
I.G.C. Info.	m\549103\6conf\z\238\jd2.dgn		
Bridge Sheet No.		Sheet	22 of 34



McFARLAND-JOHNSON, INC.