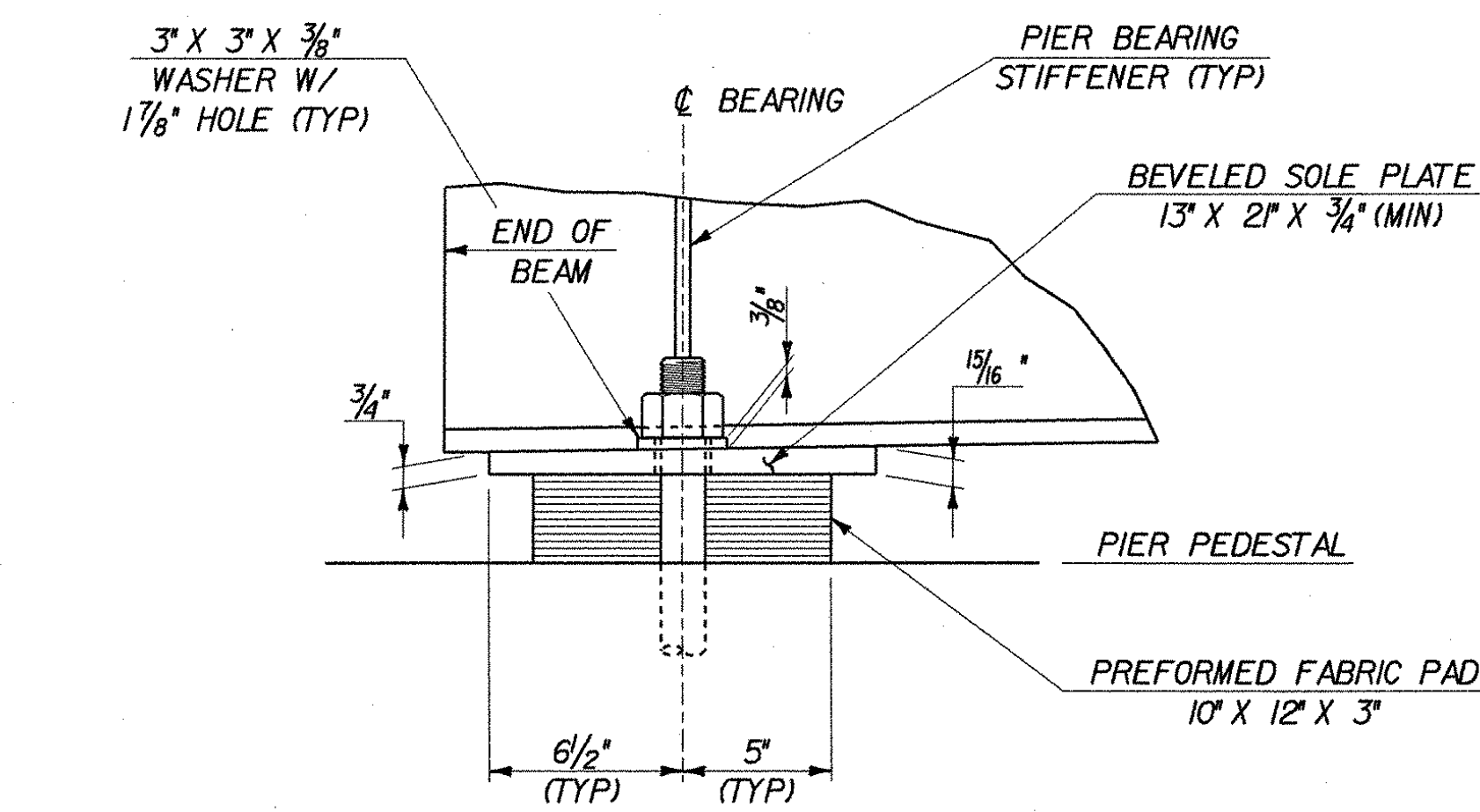
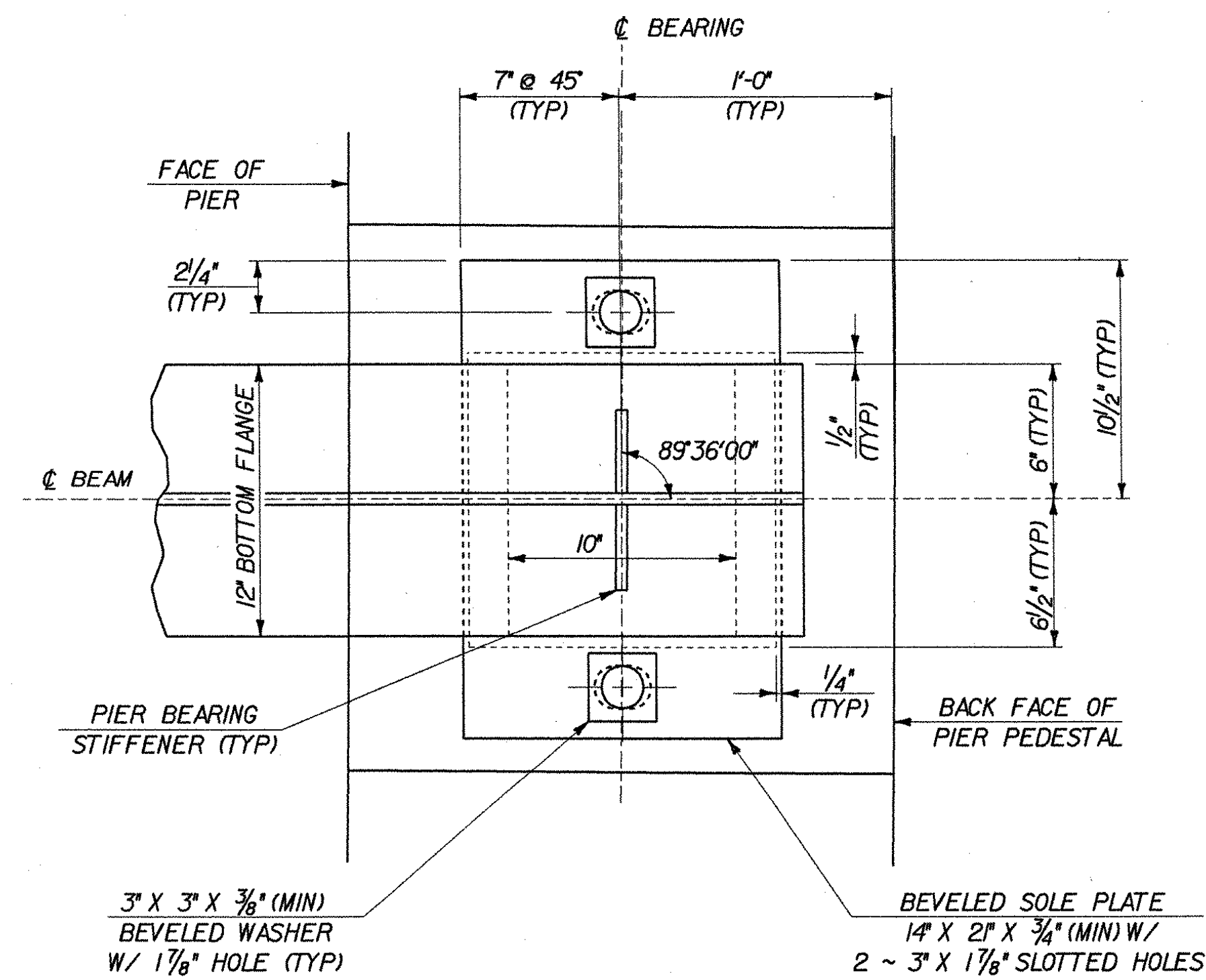
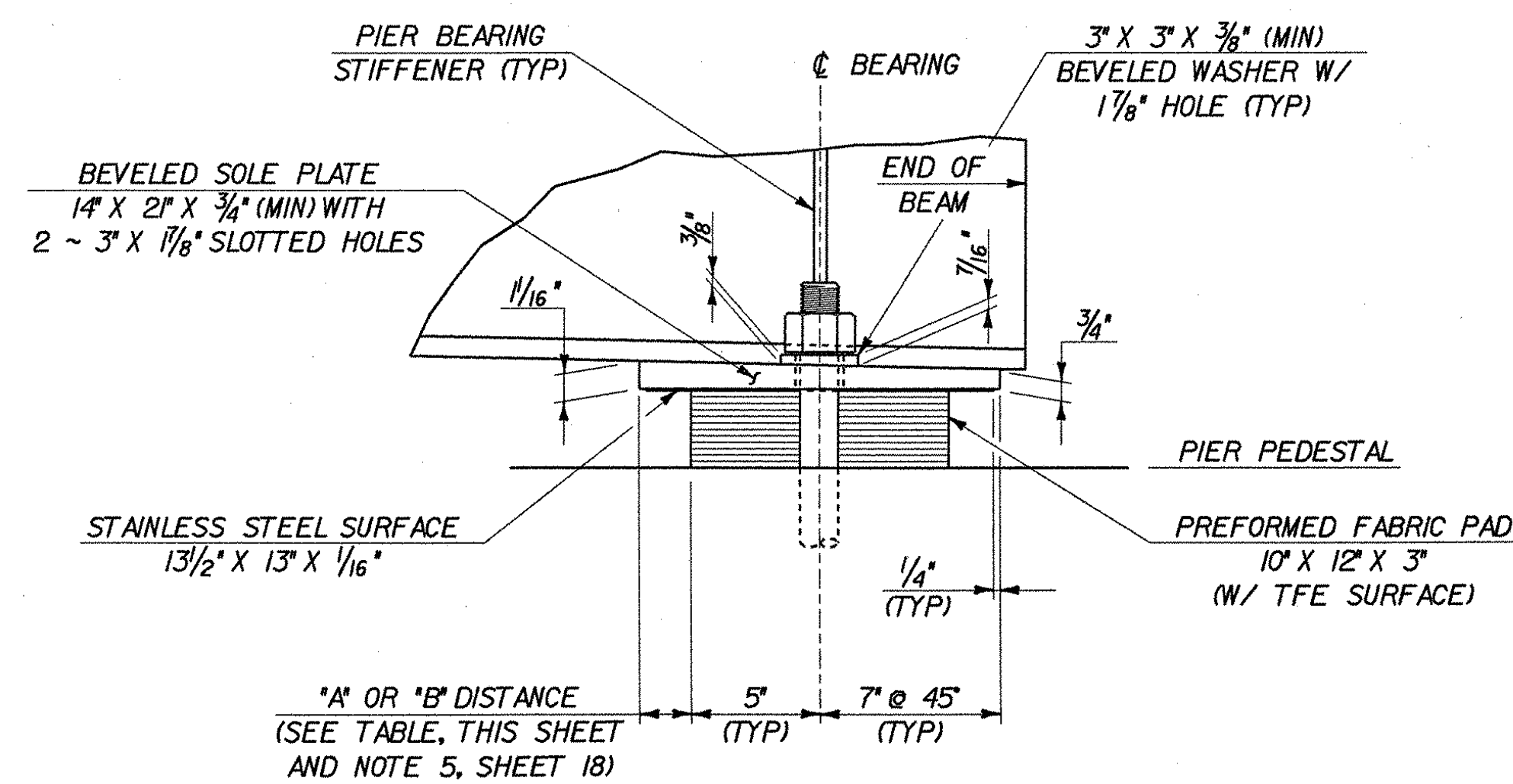


PLAN VIEW



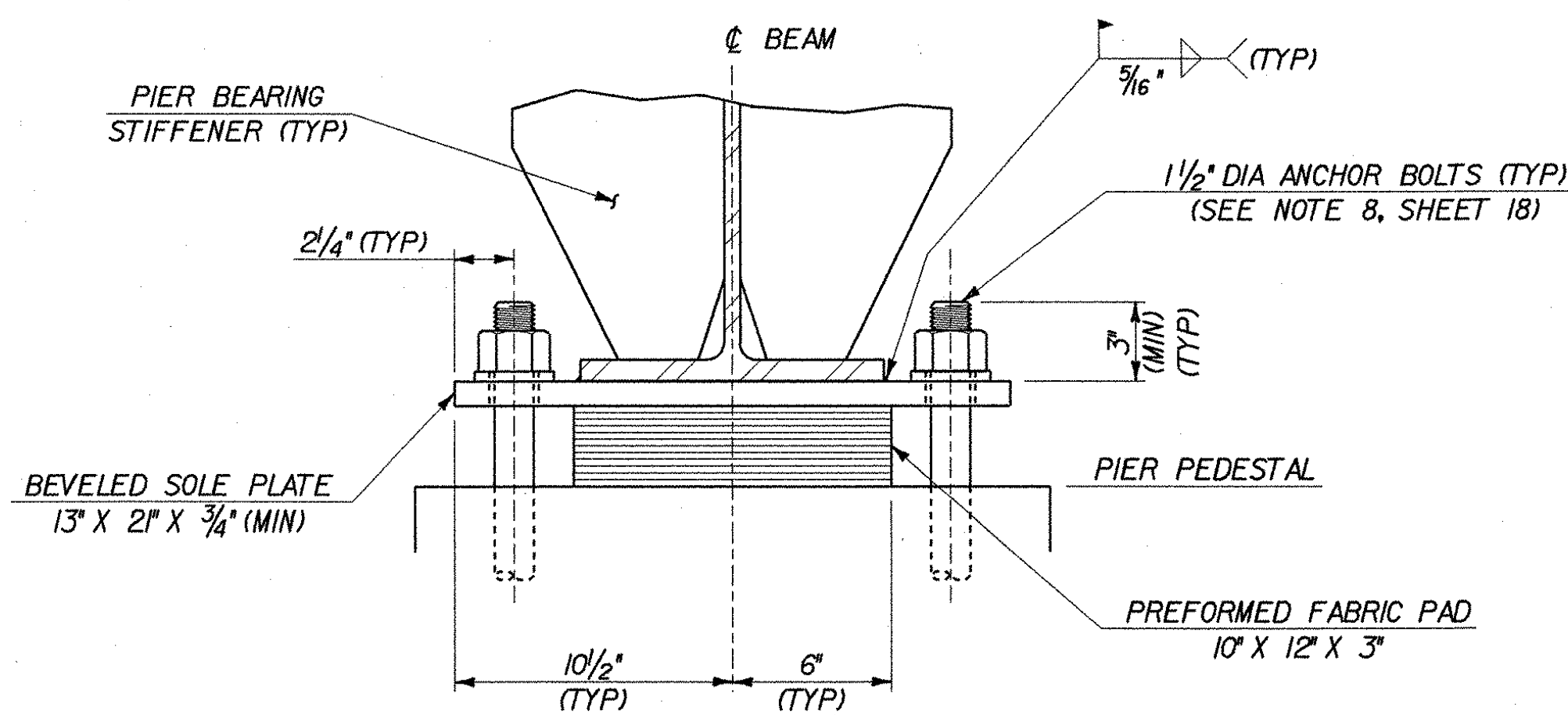
SIDE ELEVATION



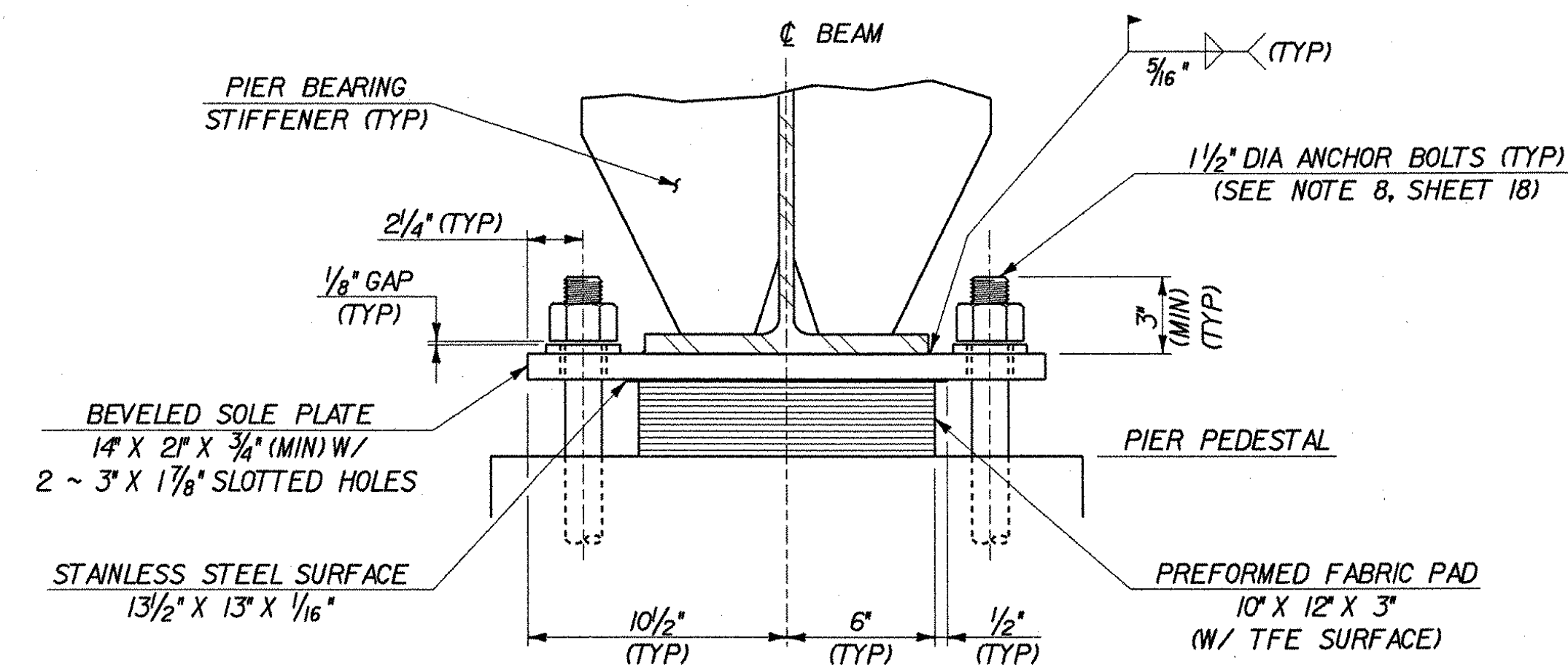
BEARING NO. 1 AT PIER NO. 2  
TEMPERATURE SETTING TABLE

TEMP	*A DIST	*B DIST
0° F	2 5/16"	2 7/8"
15° F	2 3/16"	2 3/4"
30° F	2 1/8"	2 1/16"
45° F	2"	2 3/16"
60° F	1 7/8"	2 1/2"
75° F	1 13/16"	2 3/8"
90° F	1 11/16"	2 5/16"
105° F	1 5/8"	2 3/16"

\*A IS THE DISTANCE WITH ALL DEAD LOAD IN PLACE  
\*B IS THE DISTANCE BEFORE DECK IS IN PLACE



FRONT VIEW



FIXED BEARING AT PIER NO. 1  
SCALE: 2" = 1'-0"

EXPANSION BEARING NO. 1 AT PIER NO. 2  
SCALE: 2" = 1'-0"



**STATE OF VERMONT  
AGENCY OF TRANSPORTATION**

Town Of **LYNDON** Bridge No. **2**  
 Highway No. **ALT VT 122** Log Sta. \_\_\_\_\_  
 Surv. Sta. \_\_\_\_\_

**CENTER STREET OVER PASSUMPSIC RIVER**  
**BEARING DETAILS - 2**

Designed By **T. GRANT** Drawn By **S. DELIA**  
 Checked By **T. GRANT** Date **10/01** Bridge Design Supervisor **M. ZYDEL** Date **10/01**

PROJECT **LYNDON** PROJECT NO. **BHO 1447(26)**

I.G.C. Info. **m:\549103\6conf\z\238bd2.dgn**  
 Bridge Sheet No. \_\_\_\_\_ Sheet **19** of **34**