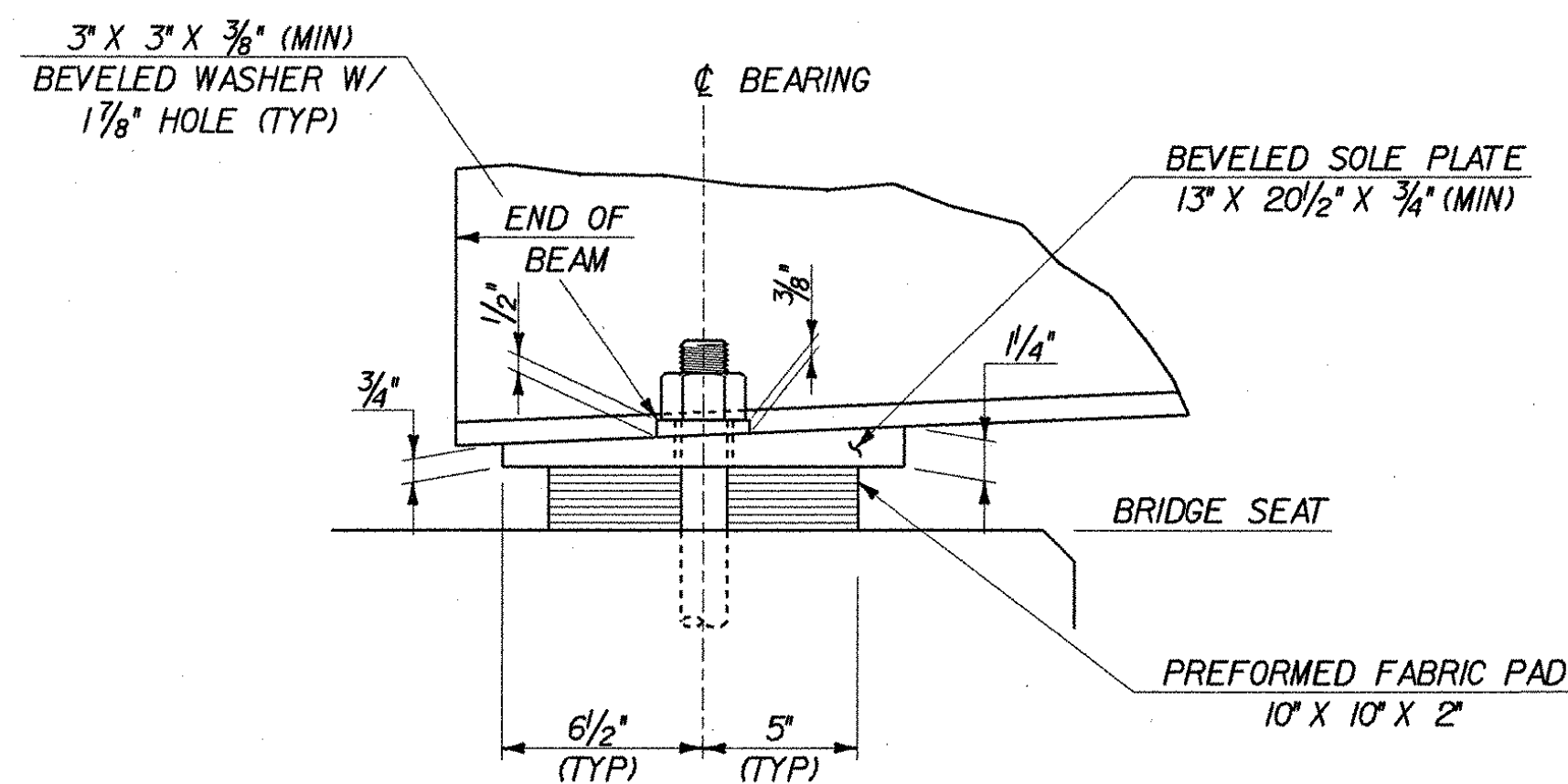
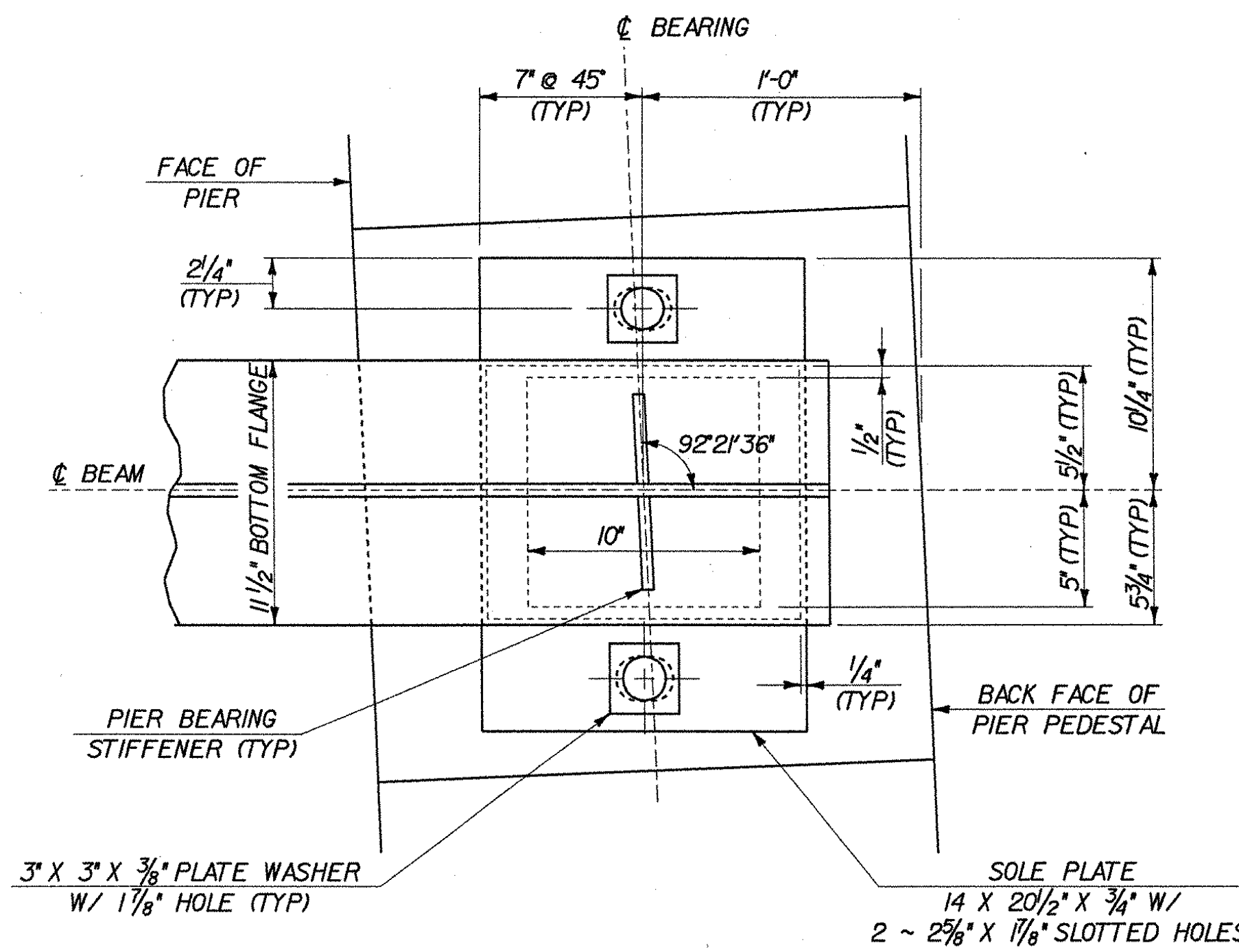
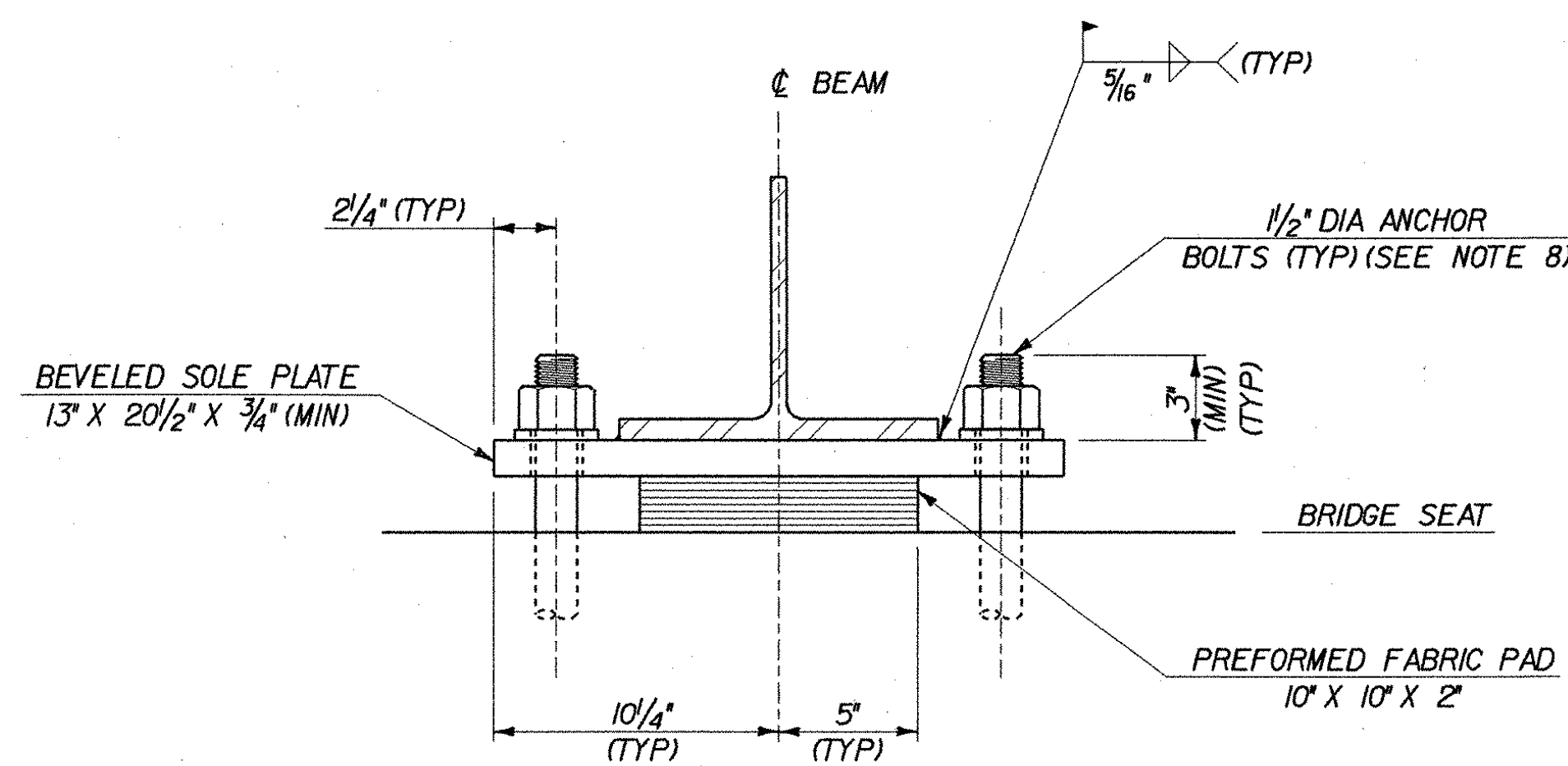
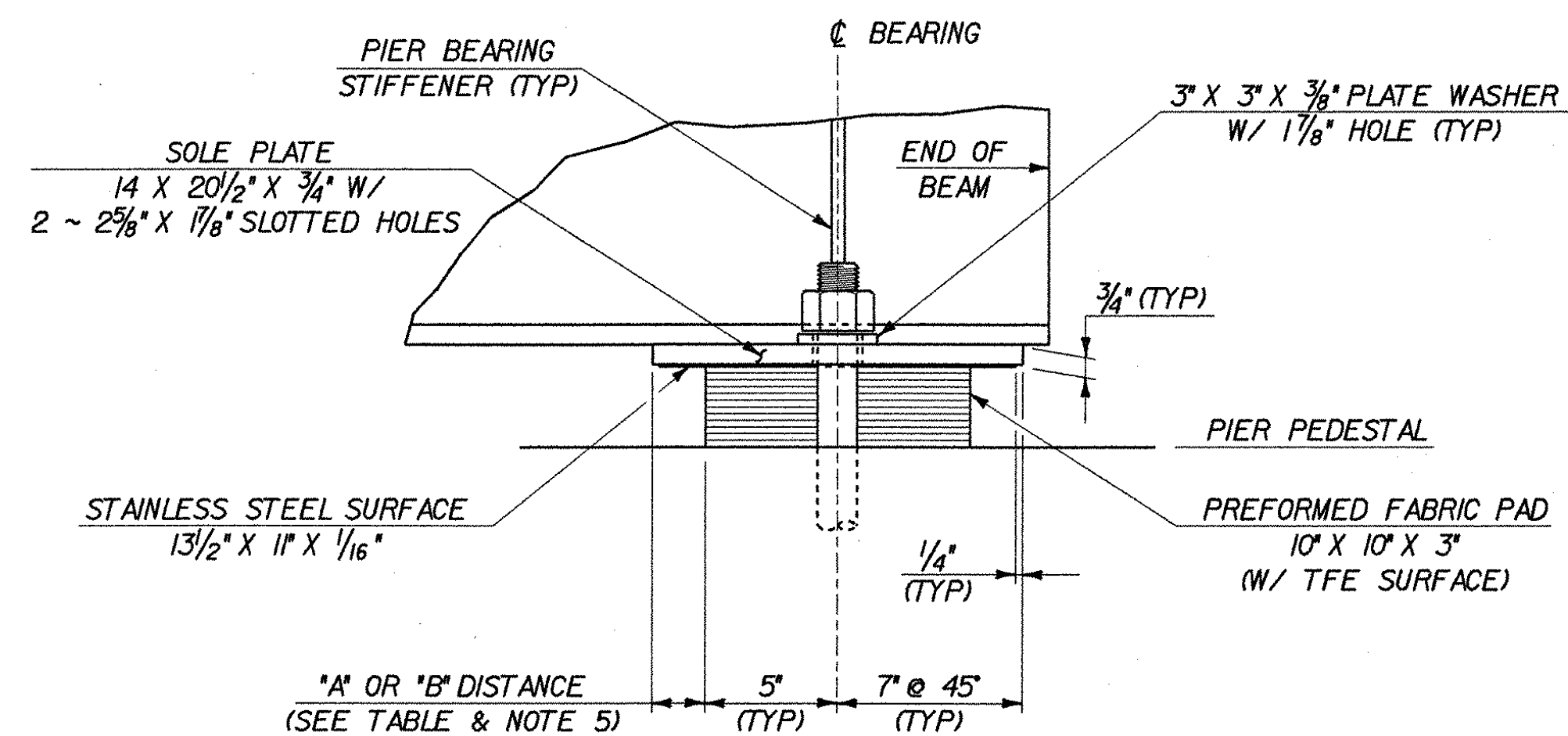


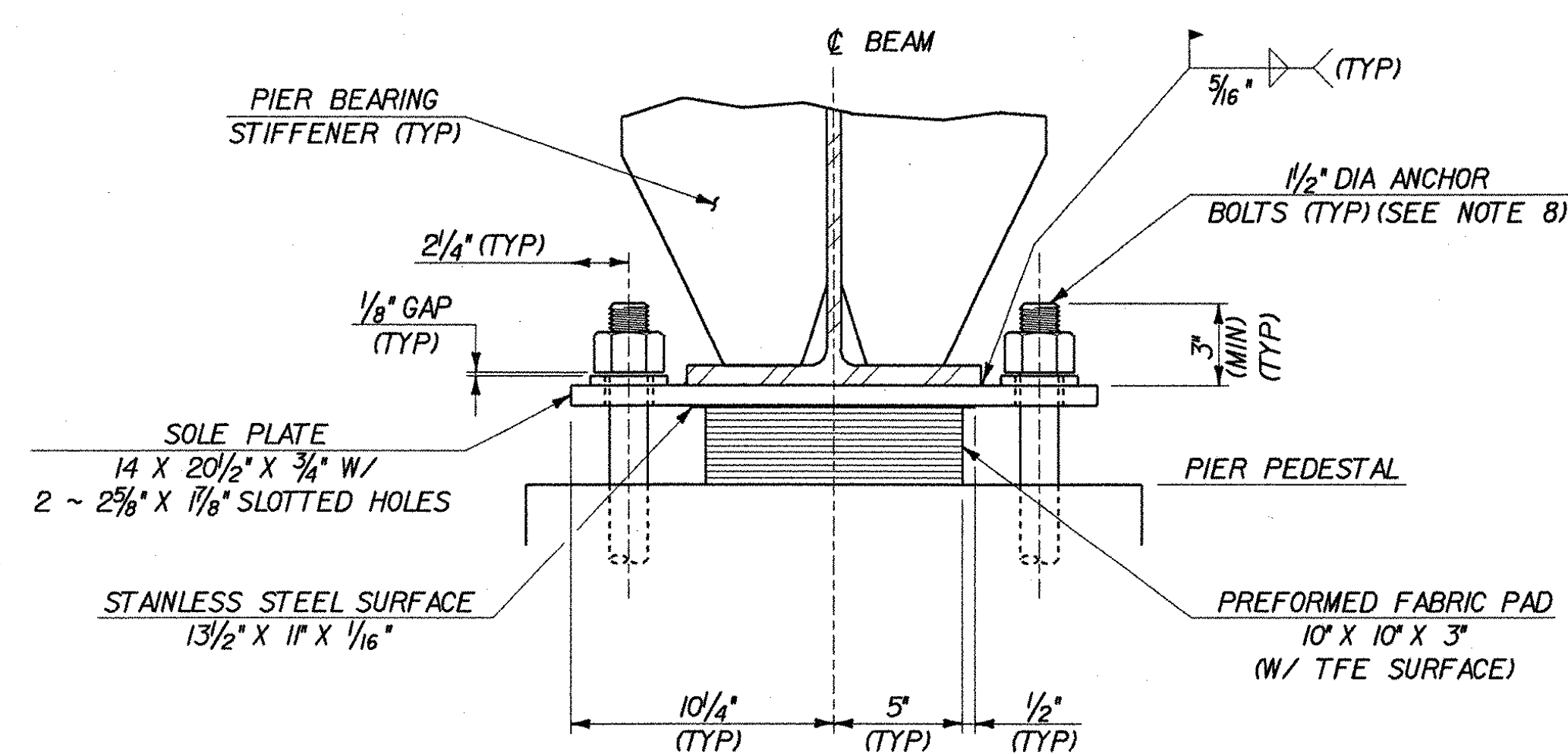
PLAN VIEW



SIDE ELEVATION



FRONT VIEW



FIXED BEARING AT ABUTMENT NO.1
SCALE: 2" = 1'-0"

EXPANSION BEARING AT PIER NO.1
SCALE: 2" = 1'-0"

BEARING NOTES

- BEARINGS SHALL CONFORM TO APPLICABLE SUBSECTIONS OF SECTION 531 & 731.
- BEARINGS SHALL BE PAID FOR AS ITEM 531.10, "BEARING DEVICE ASSEMBLY".
- SHOP DRAWINGS CONFORMING TO SUBSECTION 531.03 SHALL BE SUBMITTED TO INCLUDE WELDING AND BONDING PROCEDURES.
- THE CONCRETE SURFACE UNDER THE BEARING DEVICE SHALL BE LEVEL.
- *A DISTANCE IS THE FINAL SETTING FOR THE BEARING PAD AFTER ALL DEAD LOAD HAS BEEN APPLIED. *B DISTANCE IS LISTED FOR SETTING THE BEARING AFTER THE STRUCTURAL STEEL IS ERECTED AND BEFORE THE CONCRETE DECK IS POURED. THE DIFFERENCE IS THE THEORETICAL ELONGATION OF THE BOTTOM FLANGE DUE TO DEAD LOAD DEFLECTION. THE FINAL *A DISTANCE, AS SHOWN IN THE TABLE, MUST BE ATTAINED WITHIN 1/8 INCH.
- DESIGN CRITERIA:
A. BEARING PAD TO CONCRETE DESIGN PRESSURE = 1000 PSI MAXIMUM.
B. MINIMUM DESIGN ROTATION = 0.015 RADIAN.
C. DESIGN LOAD PER BEARING (KIPS):

LOAD	PIER NO. 1		PIER NO. 2		ABUT NO. 2
	BRG NO. 1	BRG NO. 2	BRG NO. 1	BRG NO. 2	
R _{DL}	25	37	37	15	15
R _{LL-1}	60	61	61	55	55
R _{SDL}	15	23	23	10	10

- ALL STEEL IN BEARING DEVICES (EXCEPT STAINLESS STEEL) SHALL BE AASHTO M-270, GRADE 36.
- ANCHOR BOLTS SHALL BE SWEDGED AND GALVANIZED WITH 4 THREADS. THREADS SHALL BE BURRED TO PREVENT NUT REMOVAL. ANCHOR BOLTS SHALL HAVE A MINIMUM OF 15' EMBEDMENT INTO THE CONCRETE, AND 6' MIN. INTO EXISTING STRUCTURE. ANCHOR BOLTS, NUTS AND WASHERS SHALL MEET THE REQUIREMENTS OF SUBSECTION 714.08 OF THE SPECIAL PROVISIONS USING ASTM 307.
- ALL BEARING DEVICES SHALL BE GALVANIZED OR METALLIZED. AREAS OF GALVANIZING OR METALLIZING DAMAGED BY THE FIELD WELDS OR HANDLING SHALL BE REPAIRED PER SUPPLEMENTAL SPECIFICATION 513.
- ALL HORIZONTAL DIMENSIONS SHOWN @ 45° ARE FINAL CONDITION DIMENSIONS.
- CONTRACTOR SHALL GRIND EXISTING SEATS OR PROVIDE GALVANIZED SHIMS AS REQUIRED TO MATCH THE SEAT ELEVATIONS SHOWN ON SHEET 27 OF 34.

PIER NO.1 TEMPERATURE SETTING TABLE

TEMP	*A DIST	*B DIST
0° F	2 3/16"	2 1/16"
15° F	2 1/8"	2 3/16"
30° F	2 1/16"	2 1/8"
45° F	2"	2 1/4"
60° F	1 15/16"	2 1/16"
75° F	1 7/8"	2 1/8"
90° F	1 13/16"	2 1/16"
105° F	1 3/4"	2"

STATE OF VERMONT
AGENCY OF TRANSPORTATION

Town Of	LYNDON	Bridge No.	2
Highway No.	ALT VT 122	Log Sta.	
		Surv. Sta.	
CENTER STREET OVER PASSUMPSIC RIVER			
BEARING DETAILS - 1			
Designed By	T. GRANT / S. MERKWAN	Drawn By	S. DELIA / S. MERKWAN
Checked By	T. GRANT / R. WOOD	Date	10/01
		Bridge Design Supervisor	M. ZYDEL
		Date	10/01
PROJECT	LYNDON	PROJECT NO.	BHO 1447(26)
I.G.C. Info.	m:\549103\6conf\z\238bd1.dgn		
Bridge Sheet No.		Sheet	18 of 34