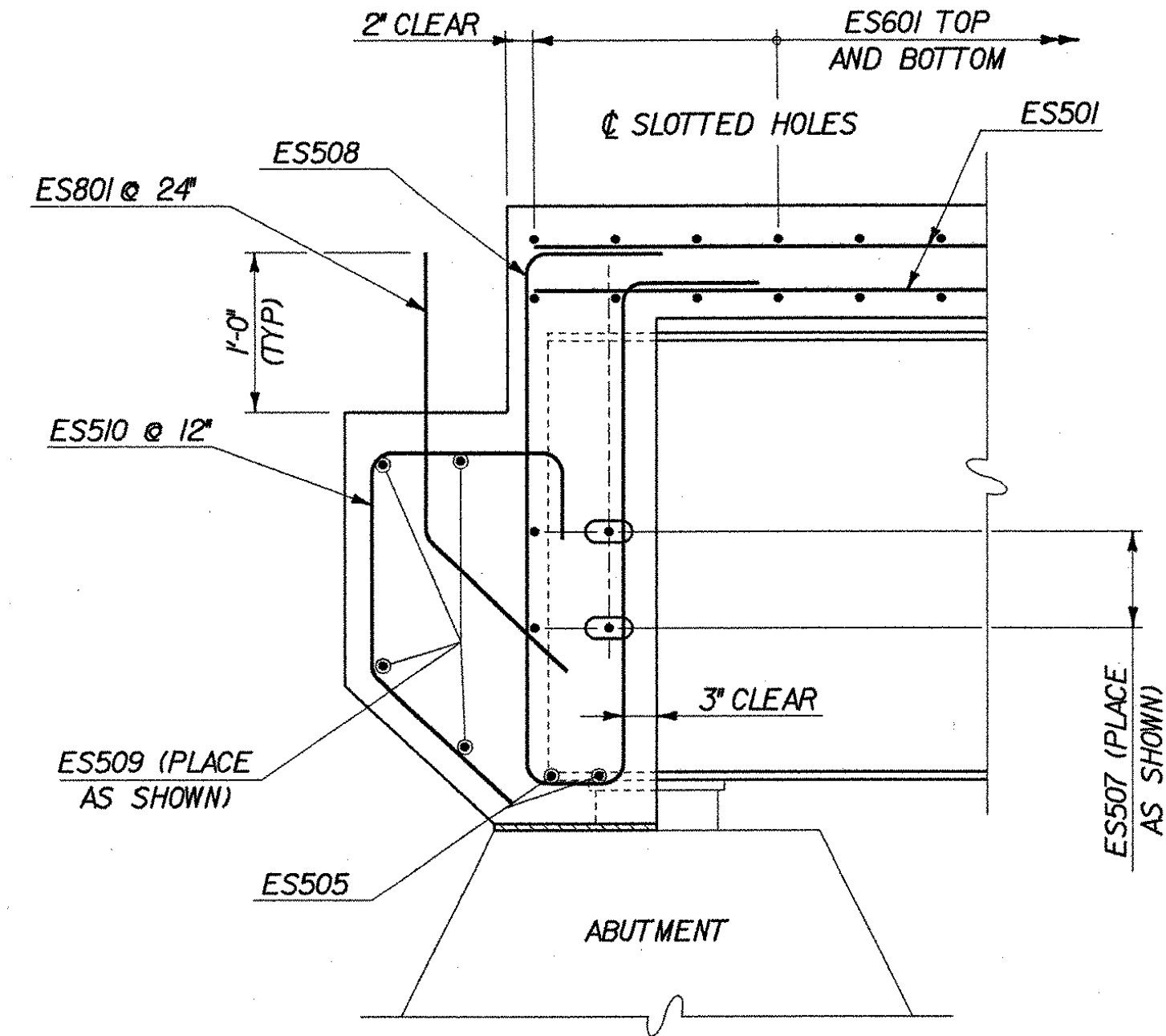
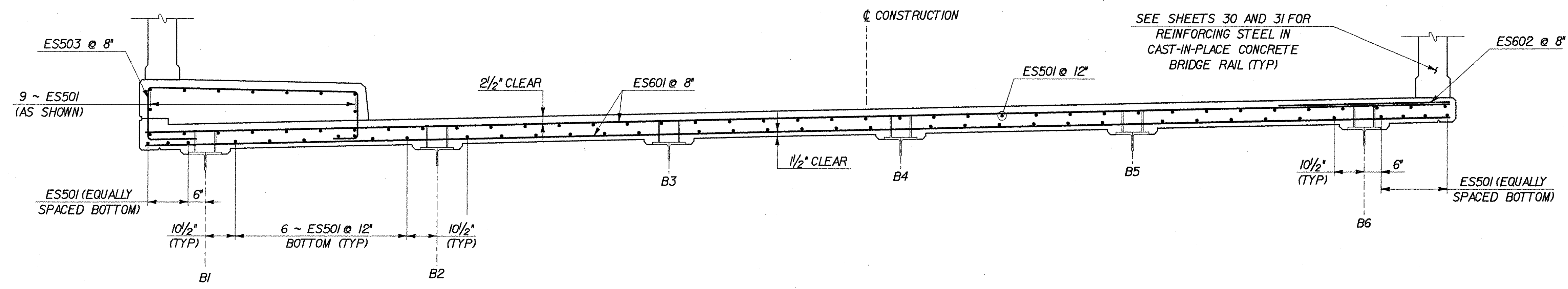


SPAN NO. 1 PLAN
 SCALE: 3/16" = 1'-0"
 (ES507 NOT SHOWN IN PIER FOR CLARITY. SEE SHEET 22 OF 34 FOR LOCATION)



SECTION A-A
 SCALE: 1" = 1'-0"
 (PERPENDICULAR TO CENTERLINE BEARING)



TYPICAL SECTION
 SCALE: 1/2" = 1'-0"
 (SPAN 1 SHOWN, OTHERS SIMILAR)

REINFORCING NOTES

- ALL REINFORCEMENT IN THE DECK, EXCEPT BARS IN CAST-IN-PLACE CONCRETE BRIDGE RAILING SHALL BE PAID UNDER ITEM 507.17, EPOXY COATED REINFORCING STEEL.
- SOME RAILING BARS ARE TO BE CAST INTO THE DECK AND THE SIDEWALK. SEE SHEETS 30 AND 31 FOR DETAILS.
- N.F. - NEAR FACE
 F.F. - FAR FACE
 E.F. - EACH FACE
- SEE SHEET 27 FOR CURTAIN WALL ELEVATION.
- SEE SHEET 22 FOR ADDITIONAL REINFORCING DETAILS AT EXPANSION JOINT.

**STATE OF VERMONT
 AGENCY OF TRANSPORTATION**

Town Of	LYNDON	Bridge No.	2
Highway No.	ALT VT 122	Log Sta.	
		Surv. Sta.	
CENTER STREET OVER PASSUMPSIC RIVER			
DECK REINFORCING - 1			
Designed By	T. GRANT	Drawn By	S. DELIA
Checked By	T. GRANT	Date	10/01
		Bridge Design Supervisor	M. ZYDEL
		Date	10/01
PROJECT	LYNDON	PROJECT NO.	BHO 1447(26)
I.G.C. Info.	m\549103\6cont\zj238dr1.dgn		
Bridge Sheet No.		Sheet	13 of 34

