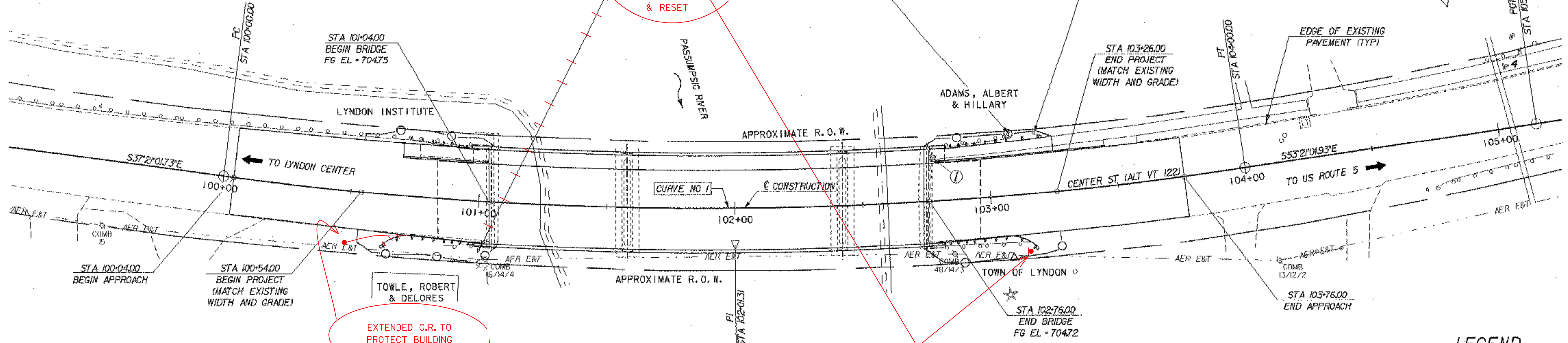


SEEDING FORMULA - RURAL AREAS

% WT.	LBS./A.	NAME	PUR %	GERM %
37.5	22.5	CREeping RED FESCUE	98	85
37.5	22.5	TALL FESCUE	95	90
5.0	3.0	RED TOP	95	90
15.0	9.0	BIRDSFOOT TREFOIL	98	85
5.0	3.0	ANNUAL RYEGRASS	95	85
100.0	60.0			



EXISTING BRIDGE DATA

SPAN 1 = 51'-11 1/2", SPAN 2 = 81'-11 1/2", SPAN 3 = 31'-11 1/2"
 DECK WIDTH = 38'-8" FASCIA TO FASCIA
 SUPERSTRUCTURE = ROLLED STEEL BEAMS SUPPORTING A CONCRETE DECK
 SUBSTRUCTURE = CONCRETE ABUTMENTS AND PIERS

CONSTRUCTION NOTES

- DURABLE #4 WHITE LINE**
 STA. 100+04.00, 11.00' RT TO STA. 103+76.00, 11.00' RT
 STA. 100+04.00, 11.00' LT TO STA. 103+76.00, 11.00' LT
- DURABLE #4 YELLOW LINE**
 STA. 100+04.00, C TO STA. 103+76.00, C DBL LINE - SOLID
- HEAVY DUTY STEEL BEAM GUARD RAIL (MODIFIED)**
 STA. 100+62.92, 20.22' RT - STA. 100+99.83, 15.71' RT
 STA. 102+80.18, 15.71' RT - STA. 103+16.98, 20.88' RT
 STA. 100+72.09, 21.73' LT - STA. 100+97.38, 19.71' LT (SEE GENERAL NOTE 4)
 STA. 102+82.62, 19.73' LT - STA. 103+22.07, 21.68' LT
- CAST-IN-PLACE CONCRETE BRIDGE RAILING**
 STA. 100+98.84, 16.00' RT - STA. 102+81.17, 16.00' RT
 STA. 100+96.36, 20.00' LT - STA. 102+83.63, 20.00' LT
- REMOVAL OF EXISTING GUARD RAIL**
 STA. 100+87.51, 17.73' RT - STA. 100+98.54, 16.62' RT
 STA. 102+81.07, 17.20' RT - STA. 103+14.33, 18.21' RT
 STA. 100+72.09, 21.73' LT - STA. 100+97.38, 19.71' LT (SEE GENERAL NOTE 4)
 STA. 102+83.46, 20.31' LT - STA. 103+09.81, 22.88' LT
- VERTICAL GRANITE CURB**
 STA. 100+69.38, 14.50' LT - STA. 100+77.45, 14.50' LT
- REMOVING AND RESETTING CURB**
 STA. 100+77.45, 14.40' LT - STA. 101+03.18, 14.94' LT
 STA. 102+76.88, 14.50' LT - STA. 103+45.55, 15.17' LT
- BITUMINOUS CONCRETE SIDEWALK**
 STA. 100+69.38, LT - STA. 101+03.18, LT
 STA. 102+76.88, LT - STA. 103+26.00, LT
- ANCHOR FOR STEEL BEAM GUARD RAIL**
 STA. 100+68.92, RT
 STA. 103+10.98, RT
 STA. 103+16.07, LT
- COLD PLACING BITUMINOUS PAVEMENT**
 STA. 100+04.00 C - STA. 100+54.00 C
 STA. 103+26.00 C - STA. 103+76.00 C

ALIGNMENT DATA

CONSTRUCTION CENTERLINE	NORTHING	EASTING
BEGIN PROJECT STA 100+54.00	10148.5758	4833.2705
PI CURVE NO 1 STA 102+01.31 BK - STA 101+98.69 AH.	10030.8457	4921.8405
END PROJECT STA 103+26.00	9956.3658	5025.1488

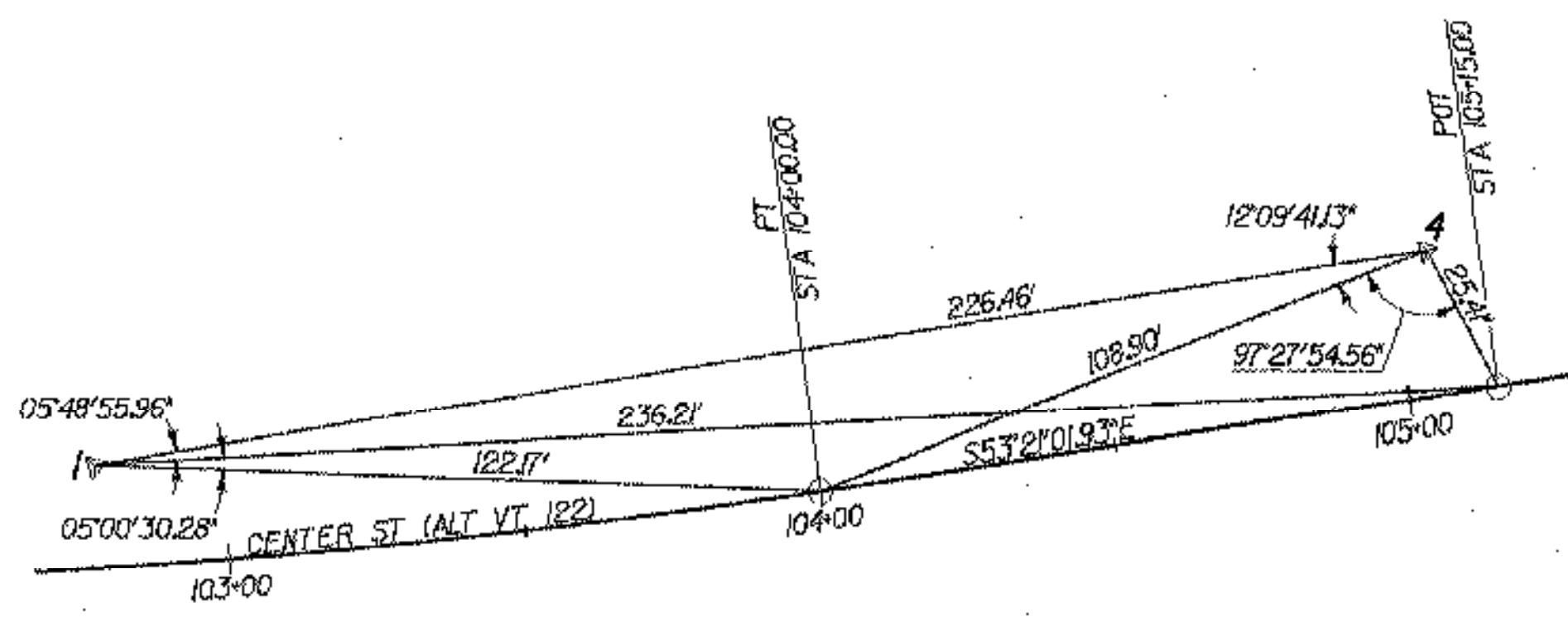
CURVE DATA	
Δ	150°00'00" LT
D	400'00"
R	1432.39'
T	201.31'
L	400'00"
E	14.08'

COORDINATES

POINT	STATION	NORTHING	EASTING
PC	100+00.00	10190.8749	4799.7080
BEGIN APPROACH	100+04.00	10187.6985	4802.1392
BEGIN PROJECT	100+54.00	10148.5758	4833.2705
BEGIN BRIDGE	101+04.00	10110.5634	4865.7482
END BRIDGE	102+76.00	9988.9098	4987.1917
END PROJECT	103+26.00	9956.3658	5025.1488
END APPROACH	103+76.00	9925.1669	5064.2177
PT	104+00.00	9910.6802	5083.3520
POT	105+15.00	9842.0347	5175.6168

NOTE:
 NORTHINGS AND EASTINGS ARE BASED UPON THE LOCAL SURVEY OF THIS PROJECT, NOT THE VERMONT GRID SYSTEM.

SCHEMATIC LAYOUT, CONTROL POINTS TO ALIGNMENT
 NOT TO SCALE



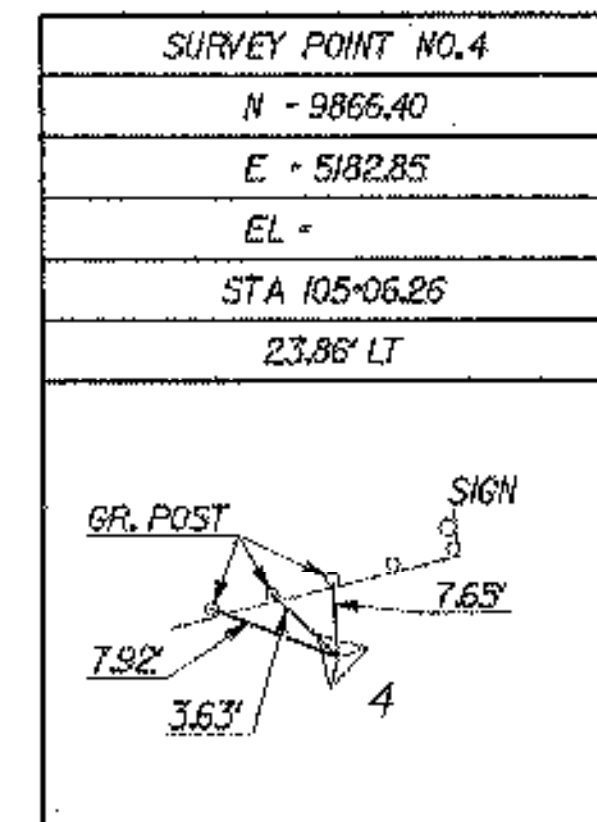
APPLICATION NOTES

- SEED MIXTURE: SHALL NOT HAVE A WEED CONTENT EXCEEDING 0.40% BY WEIGHT AND SHALL BE FREE OF ALL NOXIOUS SEED.
- SEED: TO BE APPLIED PER SEEDING FORMULAS OR AS DIRECTED BY THE ENGINEER.
- FERTILIZER: FORMULA 10-20-10, TO BE USED WITH SEED, APPLIED AT THE RATE OF 500 LBS./ACRE. (HYDRO SEEDERS MAY USE 19-19-19 FORMULA).
- AGRICULTURAL LIMESTONE: TO BE APPLIED AT THE RATE OF 2 TONS/ACRE, OR AS DIRECTED BY THE ENGINEER.
- HAY MULCH: TO BE PLACED ON EARTH SLOPES AT THE RATE OF 2 TONS/ACRE, OR AS DIRECTED BY THE ENGINEER.
- TOPSOIL: TO BE USED WITH SEED AS INDICATED ON THE PLANS, OR AS DIRECTED BY THE ENGINEER.
- TACK COAT: EMULSIFIED ASPHALT IS TO BE APPLIED AT THE RATE OF 0.15 GAL/SY BETWEEN SUCCESSIVE COURSES OF PAVEMENT AS DIRECTED BY THE ENGINEER.

SWING TIES TO CENTERLINE CONSTRUCTION

SURVEY POINT NO. 1	
N	10000.00
E	5000.00
EL	704.96
STA	102-78.24
	16.80' LT

SURVEY POINT NO. 4	
N	9865.40
E	5182.85
EL	
STA	105+06.26
	23.86' LT



LEGEND

- EXISTING SIGNS
- RET - RETAIN

GENERAL NOTES

- ALL CONSTRUCTION ACTIVITY SHALL REMAIN WITHIN THE EXISTING RIGHT-OF-WAY.
- THE EXISTING ROADWAY ALONG CENTER STREET (ALT VT 122) IS PAVED, (DEPTH UNKNOWN).
- ALL SALVAGED SIGNS SHALL BE ERECTED IN THE SAME LOCATION, ON NEW POSTS, AFTER COMPLETION OF CONSTRUCTION. POSTS SHALL BE PAID FOR UNDER ITEM 675.304, "FLANGED CHANNEL SIGN POSTS".
- APPROXIMATE LENGTH SHOWN, MODIFY AS NECESSARY TO TIE INTO EXISTING RAIL WITHIN DISTANCE SHOWN.

STATE OF VERMONT AGENCY OF TRANSPORTATION

Town Of	LYNDON	Bridge No.	2
Highway No.	ALT VT 122	Log Sta.	
CENTER STREET OVER PASSUMPSIC RIVER			
ROADWAY LAYOUT AND PAVEMENT MARKING			
Designed By	T. GRANT/S. MERKMAN	Drawn By	S. DELIA/S. MERKMAN
Checked By	T. GRANT/R. WOOD	Date	10/01
		Bridge Design Supervisor	M. ZYDEL
		Date	10/01
PROJECT	LYNDON	PROJECT NO.	BHO 1447(26)
I.G.C. Info.	m:\549103\6cont\2\238trp1.dgn		
Bridge Sheet No.		Sheet	4 of 34