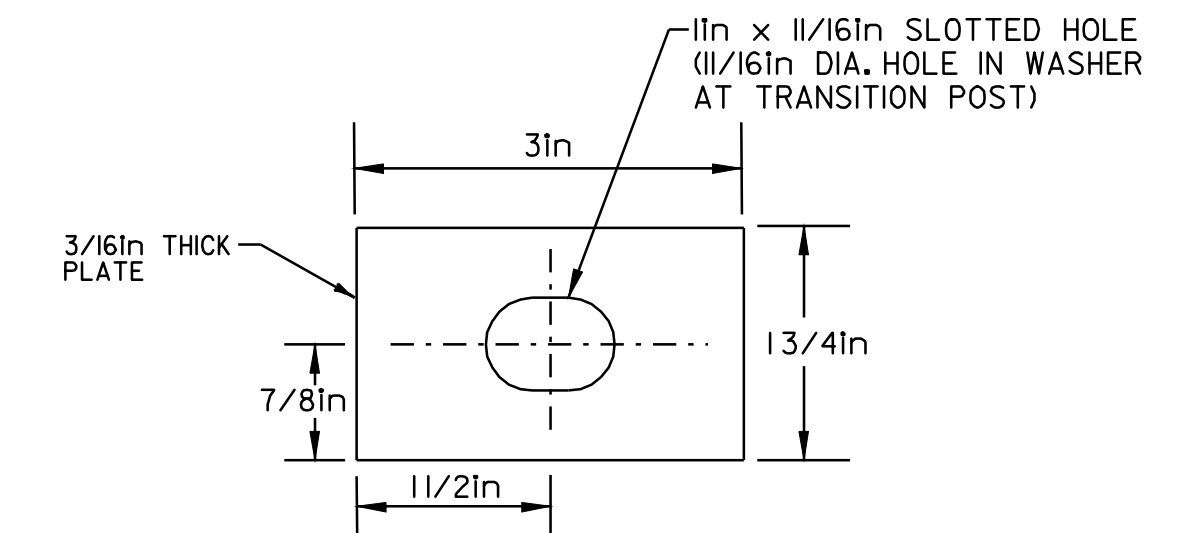
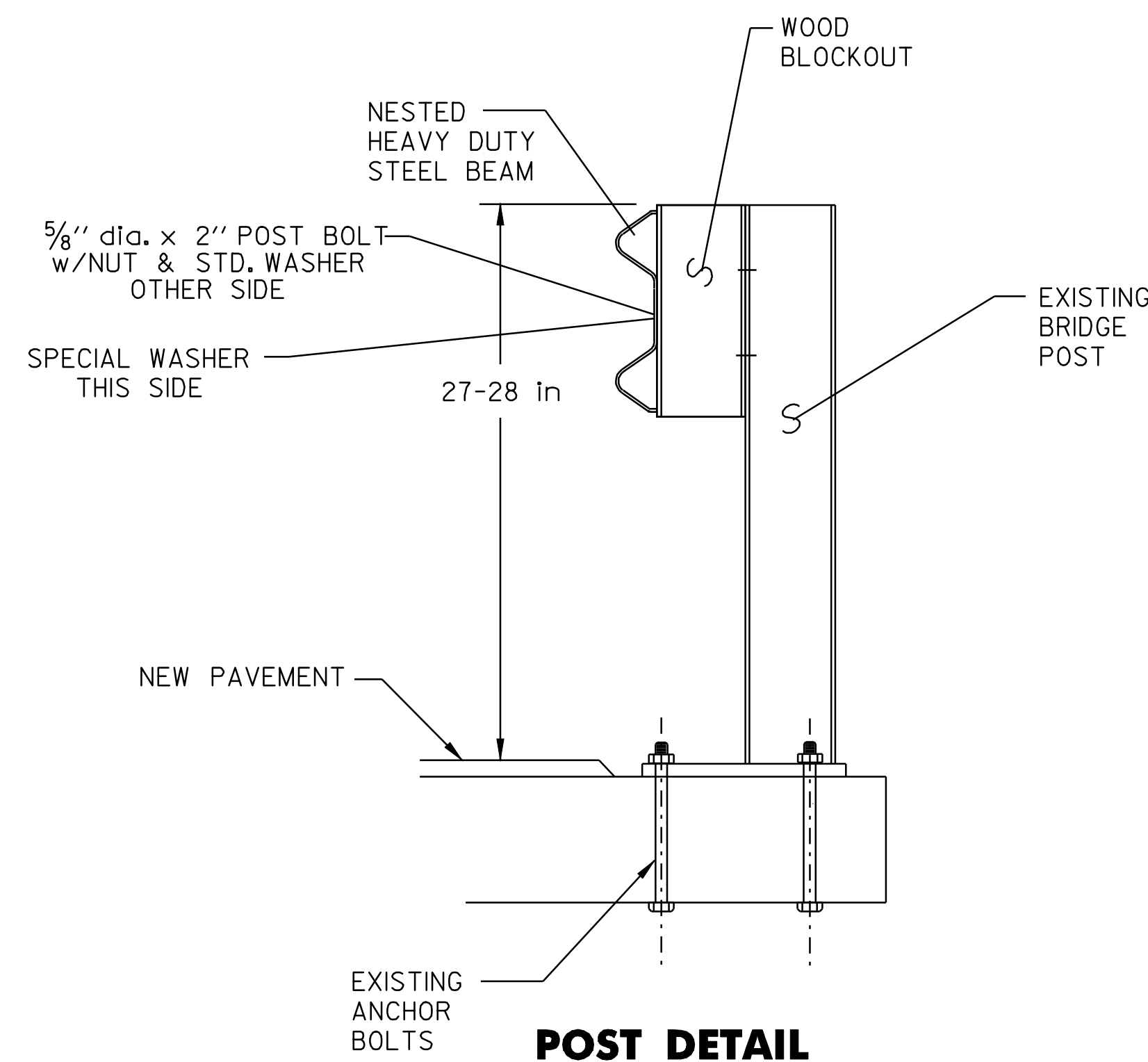


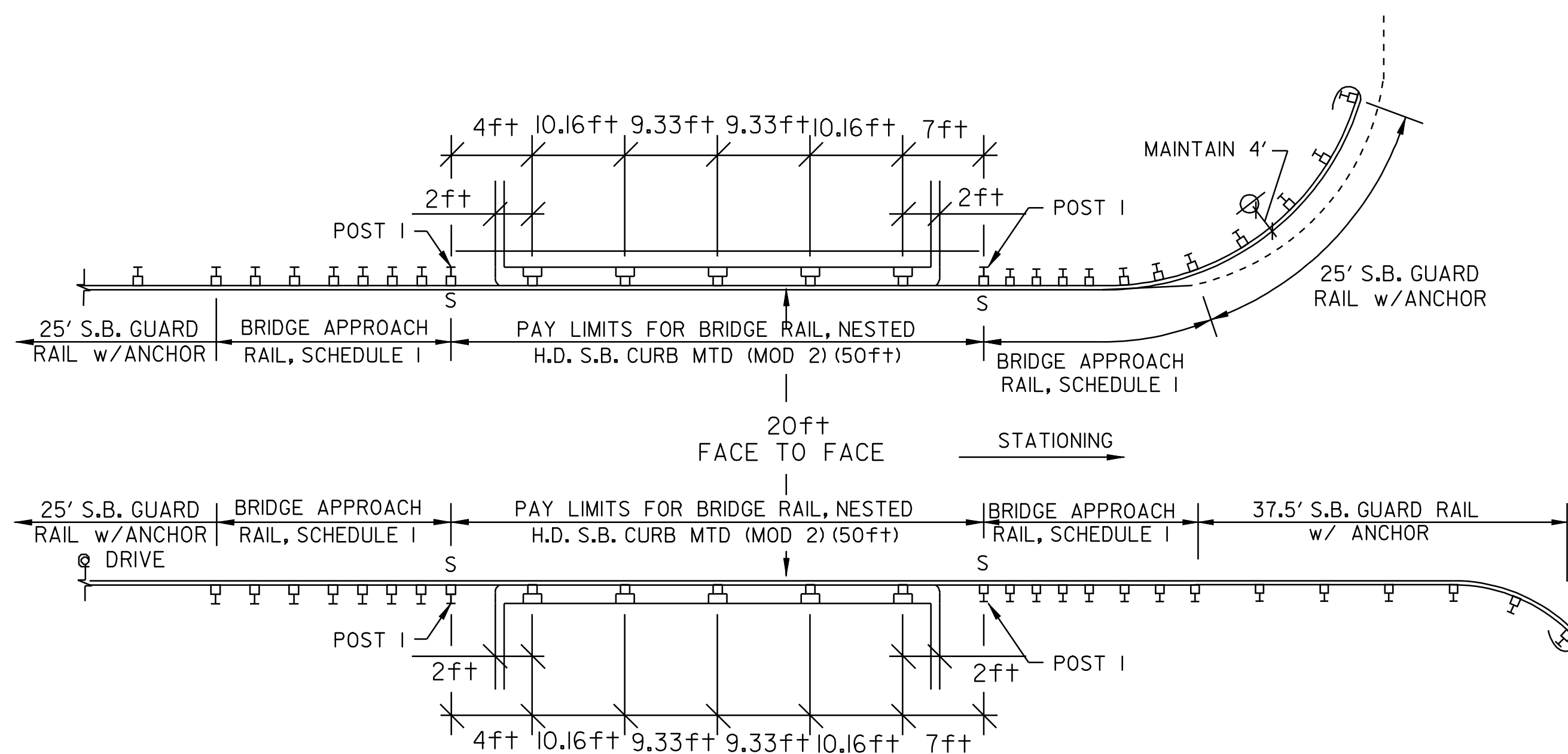
BELVIDERE - BRIDGE #7
STA 8+07 (ROUTE LOG) - MM 0.153
STA 7+99 (FIELD MEASURED)



SPECIAL WASHER DETAIL
(MATERIAL SHALL MEET AASHTO M270/M270 GRADE 345W)

POST DETAILS

- NOTES:
1. BOLTS, NUTS & WASHERS SHALL BE GALVANIZED AND CONFORM TO SECTION 714.05, EXCEPT THAT POST BOLTS SHALL CONFORM TO STANDARD G-1 REQUIREMENTS AND BE CORROSION RESISTANT.
 2. POSTS, PLATE AND SPECIAL WASHER SHALL BE OF AASHTO M270/M270 GRADE 345W (GRADE 50W) STEEL



BELVIDERE - BRIDGE #10
STA 132+63 (FIELD MEASURED) = MM 2.512

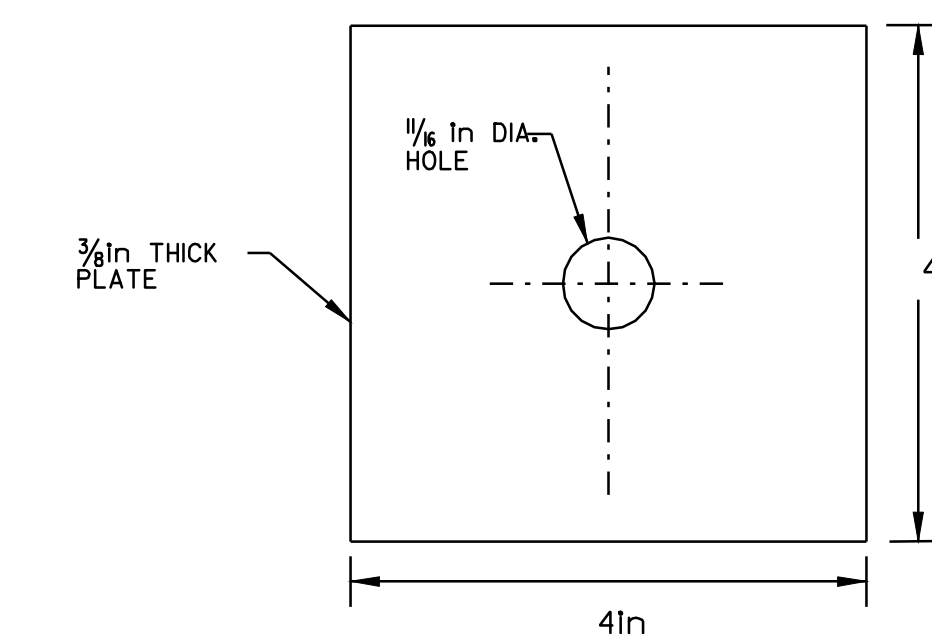
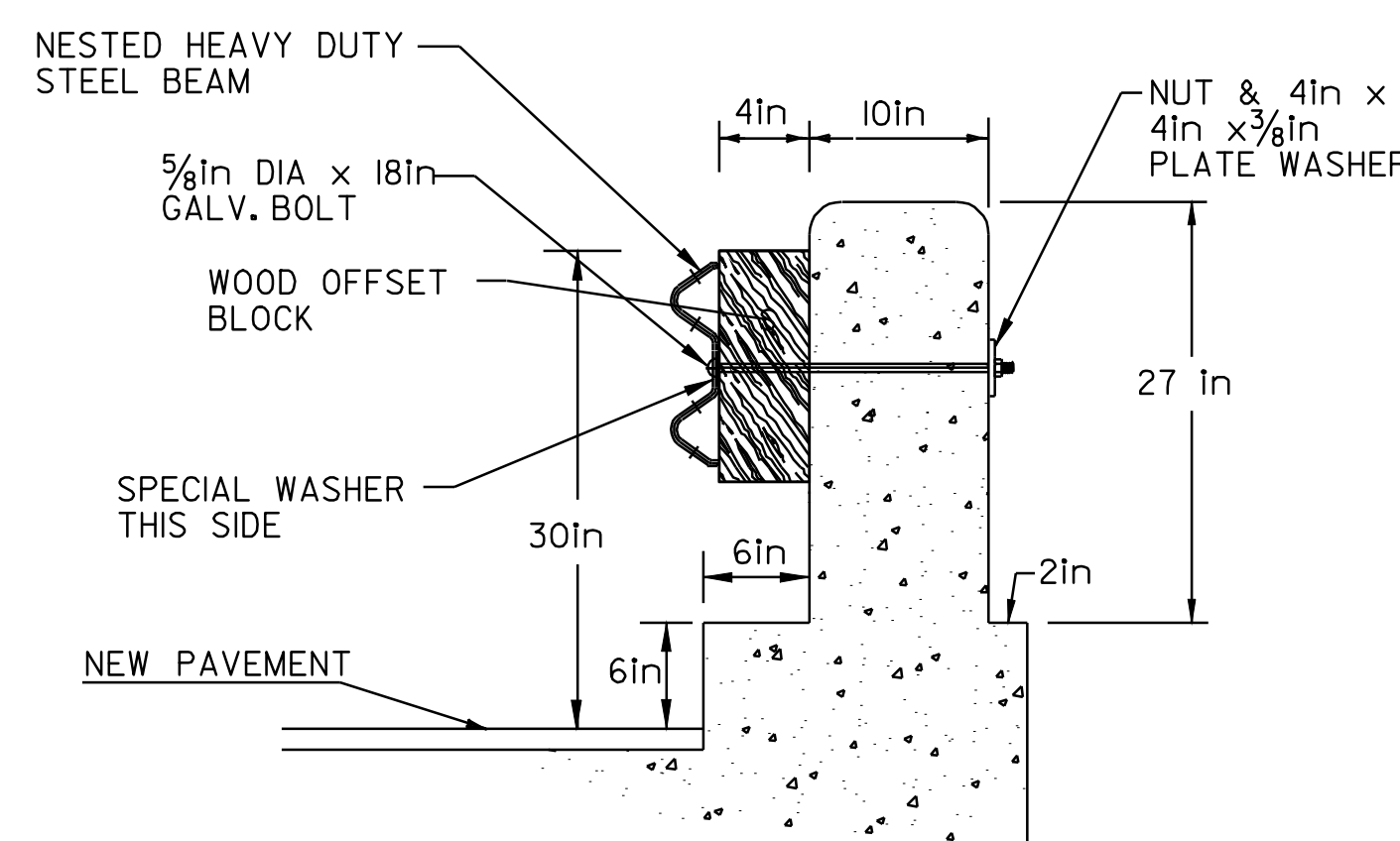
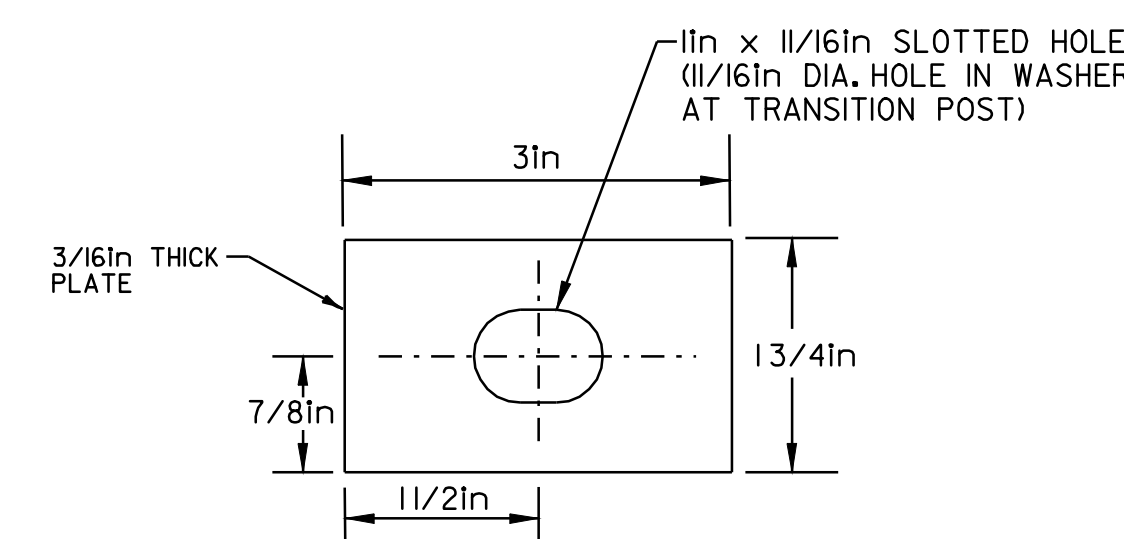


PLATE WASHER DETAIL
(MATERIAL SHALL MEET AASHTO M270/M270 GRADE 345W)

- NOTES: BOLTS, NUTS & WASHERS SHALL BE GALVANIZED AND CONFORM TO SECTION 714.05.



SPECIAL WASHER DETAIL
(MATERIAL SHALL MEET AASHTO M270/M270 GRADE 345W)

**BRIDGE
DETAIL
SHEET
#3**

DESIGNED BY	BCE/PJM	DATE	8-05
DRAWN BY	C.E.A., INC.	DATE	8-05
DESIGN FILE NO.	p99ci90.dgn		
PRF FILE	p99ci90bd3.1	DATE PLOTTED	12-DEC-2008 09:30
PROJ. NAME	CAMBRIDGE - BELVIDERE		
PROJ. NO.	STP 2219(1)S		
SHEET	36	OF	37 SHEETS