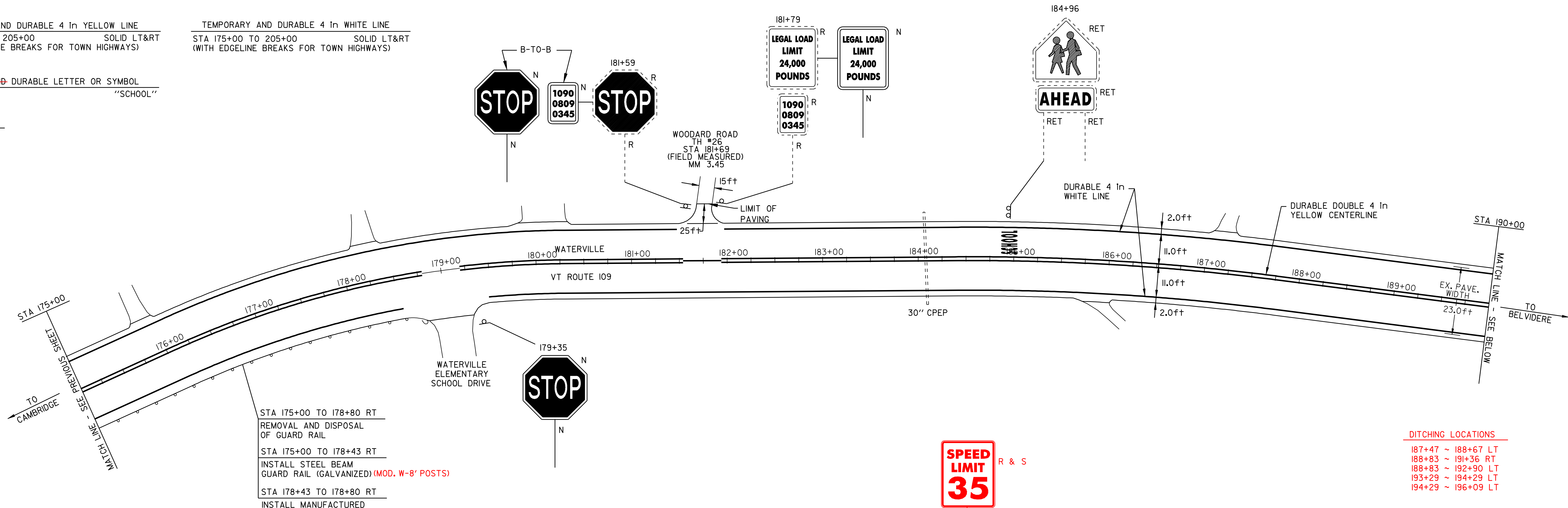


TEMPORARY AND DURABLE 4 in YELLOW LINE
 STA 175+00 TO 205+00 SOLID LT&RT
 (WITH CENTERLINE BREAKS FOR TOWN HIGHWAYS)

TEMPORARY AND DURABLE 4 in WHITE LINE
 STA 175+00 TO 205+00 SOLID LT&RT
 (WITH EDGELINE BREAKS FOR TOWN HIGHWAYS)

TEMPORARY AND DURABLE LETTER OR SYMBOL
 STA 184+96 LT "SCHOOL"

REMOVING SIGNS
 6
 7



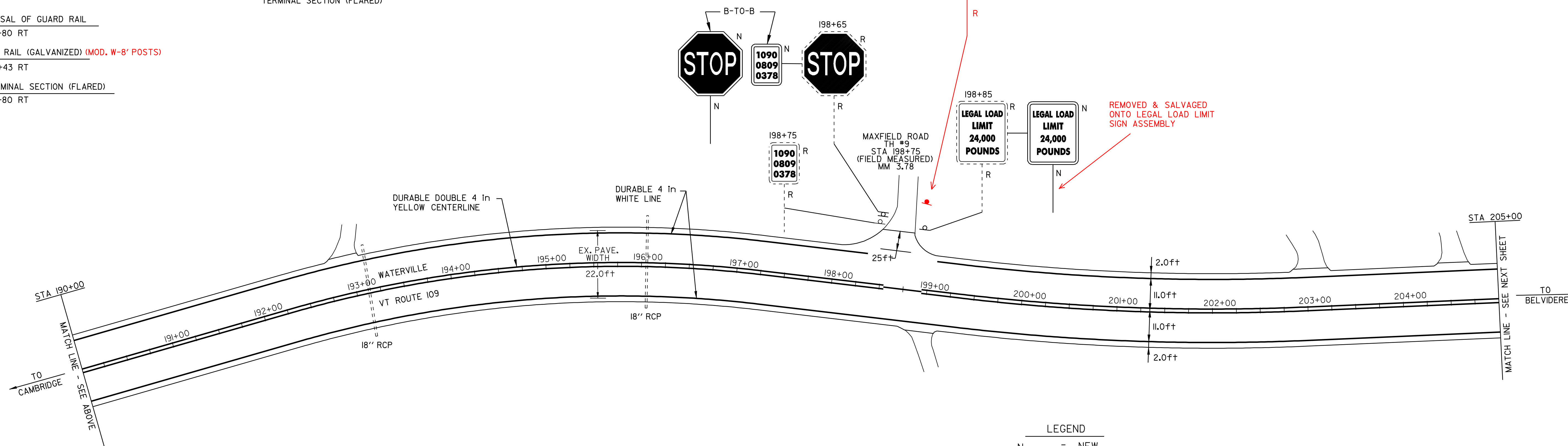
STA 175+00 TO 178+80 RT
 REMOVAL AND DISPOSAL
 OF GUARD RAIL
 STA 175+00 TO 178+43 RT
 INSTALL STEEL BEAM
 GUARD RAIL (GALVANIZED) (MOD. W-8' POSTS)
 STA 178+43 TO 178+80 RT
 INSTALL MANUFACTURED
 TERMINAL SECTION (FLARED)

DITCHING LOCATIONS
 187+47 ~ 188+67 LT
 188+83 ~ 191+36 RT
 188+83 ~ 192+90 LT
 193+29 ~ 194+29 LT
 194+29 ~ 196+09 LT

REMOVAL AND DISPOSAL OF GUARD RAIL
 STA 175+00 TO 178+80 RT

STEEL BEAM GUARD RAIL (GALVANIZED) (MOD. W-8' POSTS)
 STA 175+00 TO 178+43 RT

MANUFACTURED TERMINAL SECTION (FLARED)
 STA 178+43 TO 178+80 RT



LEGEND

N	=	NEW
R	=	REMOVE
R&S	=	REMOVE & SALVAGE
S	=	SALVAGE
RET	=	RETAIN
B-TO-B	=	BACK TO BACK
⊕	⊞	CATCH BASIN/DI
⊙	⊞	EXISTING THROAT DI
I		MARKER POST
⊗		UTILITY POLE
⊗/I		UTIL. POLE W/UNDERGROUND UTIL.
⌋		DRIVE

PAVING PROJECT LAYOUT SHEET #14

DESIGNED BY	BCE/PJM	DATE	8-05
DRAWN BY	C.E.A., INC.	DATE	8-05
DESIGN FILE NO.	p99ci90.dgn		
PRF FILE	p99ci90i1.1	DATE PLOTTED	12-DEC-2008 09
PROJ. NAME	CAMBRIDGE - BELVIDERE		
PROJ. NO.	STP 2219(1)S		
SHEET	23	OF	37 SHEETS