

TEMPORARY AND DURABLE 4 in YELLOW LINE  
 STA 115+00 TO 145+00 SOLID LT&RT  
 STA 120+20 DOUBLE SOLID RT  
 (WITH CENTERLINE BREAKS FOR TOWN HIGHWAYS)

TEMPORARY AND DURABLE 4 in WHITE LINE  
 STA 115+00 TO 145+00 SOLID LT&RT  
 (WITH EDGELINE BREAKS FOR TOWN HIGHWAYS)

TEMPORARY AND DURABLE LETTER OR SYMBOL  
 STA 120+20 RT "STOP"

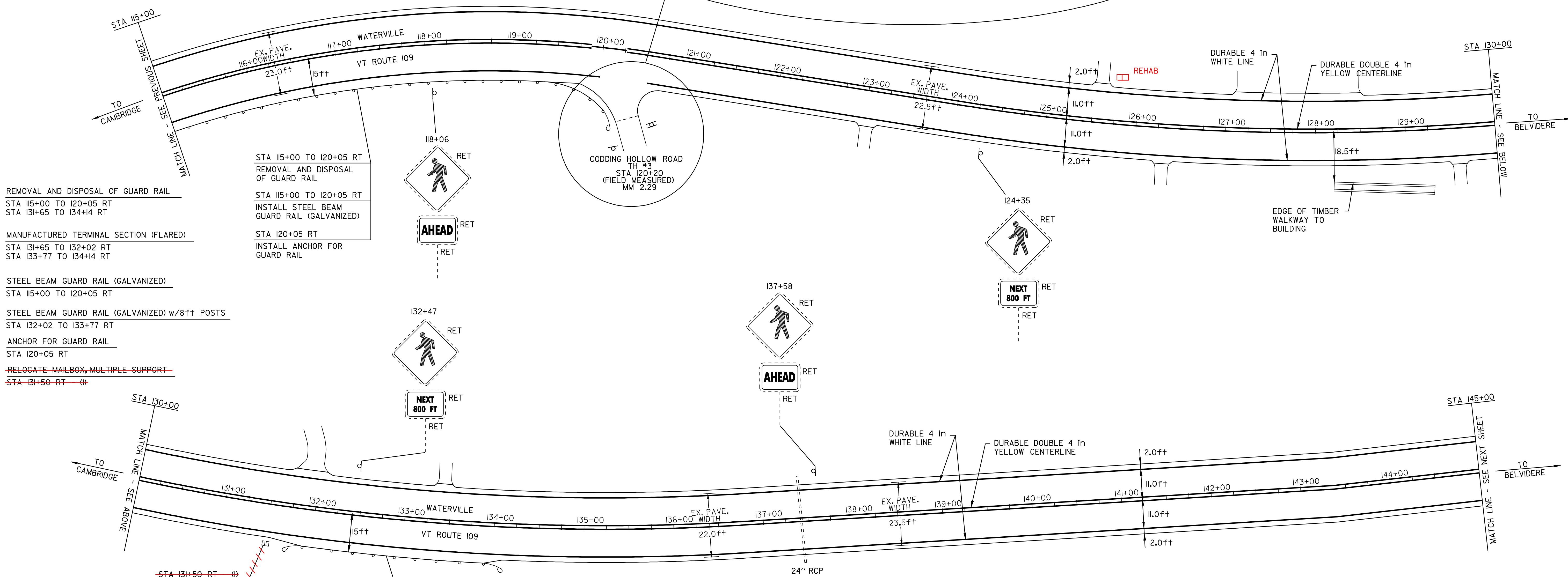
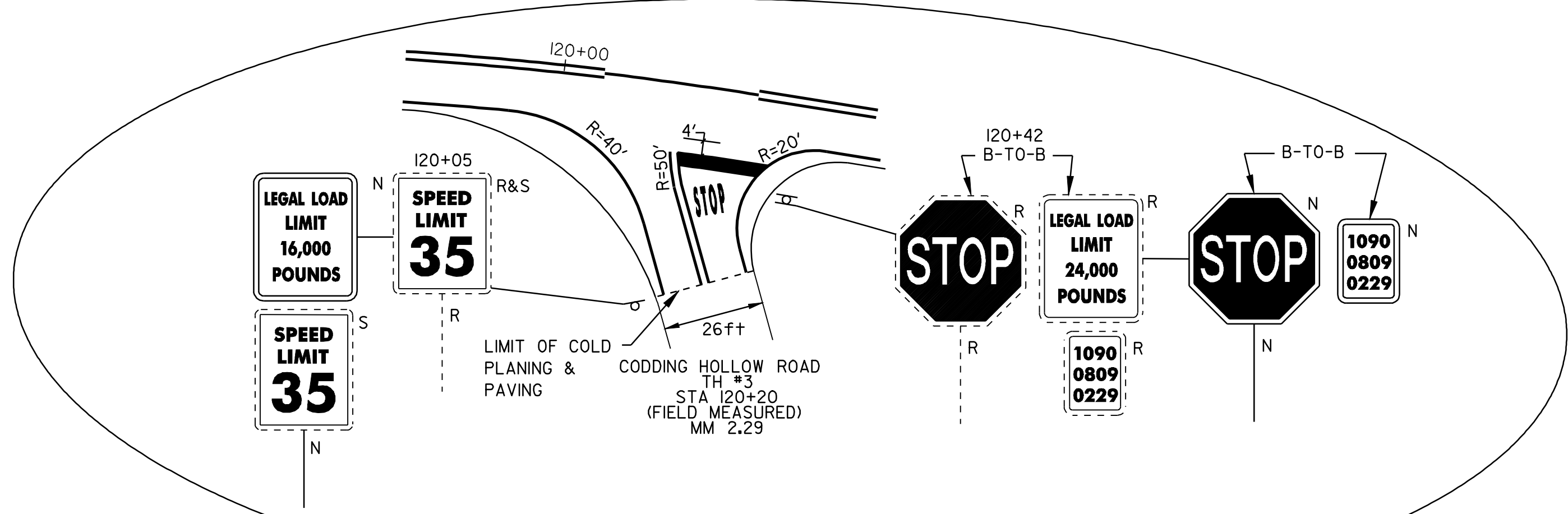
TEMPORARY AND DURABLE 24 in STOP BAR  
 STA 120+20 RT CODDING HOLLOW ROAD

REMOVING SIGNS  
 4

DITCHING LOCATIONS (REFER TO SHEET 9 FOR DETAILS)

STA 119+50 TO 123+50 LT 119+43 ~ 125+22  
 STA 126+00 TO 127+00 LT 125+90 ~ 126+82  
 STA 129+75 TO 131+50 LT 128+50 ~ 130+23  
 STA 135+00 TO 145+00 LT 135+29 ~ 150+25

REHAB D.I.  
 STA 125+75 LT



REMOVAL AND DISPOSAL OF GUARD RAIL  
 STA 115+00 TO 120+05 RT  
 STA 131+65 TO 134+14 RT

STA 115+00 TO 120+05 RT  
 REMOVAL AND DISPOSAL  
 OF GUARD RAIL

STA 115+00 TO 120+05 RT  
 INSTALL STEEL BEAM  
 GUARD RAIL (GALVANIZED)

STA 120+05 RT  
 INSTALL ANCHOR FOR  
 GUARD RAIL

MANUFACTURED TERMINAL SECTION (FLARED)  
 STA 131+65 TO 132+02 RT  
 STA 133+77 TO 134+14 RT

STEEL BEAM GUARD RAIL (GALVANIZED)  
 STA 115+00 TO 120+05 RT

STEEL BEAM GUARD RAIL (GALVANIZED) w/8ft POSTS  
 STA 132+02 TO 133+77 RT

ANCHOR FOR GUARD RAIL  
 STA 120+05 RT

RELOCATE MAILBOX, MULTIPLE SUPPORT  
 STA 131+50 RT (4)

STA 131+65 TO 132+02 RT  
 INSTALL MANUFACTURED  
 TERMINAL SECTION (FLARED)

STA 131+65 TO 134+14 RT  
 REMOVAL AND DISPOSAL  
 OF GUARD RAIL

STA 132+02 TO 133+77 RT  
 INSTALL STEEL BEAM  
 GUARD RAIL (GALVANIZED)  
 (MOD. w/8 ft POSTS)

STA 133+77 TO 134+14 RT  
 INSTALL MANUFACTURED  
 TERMINAL SECTION (FLARED)

LEGEND

N	=	NEW
R	=	REMOVE
R&S	=	REMOVE & SALVAGE
S	=	SALVAGE
RET	=	RETAIN
B-T-O-B	=	BACK TO BACK
⊕ ⊞ □	=	CATCH BASIN/DI
⊙ □	=	EXISTING THROAT DI
I	=	MARKER POST
⊗	=	UTILITY POLE
⊗/I	=	UTIL. POLE W/UNDERGROUND UTIL.
⌌	=	DRIVE

## PAVING PROJECT LAYOUT SHEET #12

DESIGNED BY BCE/PJM DATE 8-05  
 DRAWN BY C.E.A., INC. DATE 8-05  
 DESIGN FILE NO. p99cl90.dgn  
 PRF FILE p99cl90il2.i DATE PLOTTED 12-DEC-2008 03  
 PROJ. NAME **CAMBRIDGE - BELVIDERE**  
 PROJ. NO. **STP 2219(1)S**  
 SHEET **21** OF **37** SHEETS