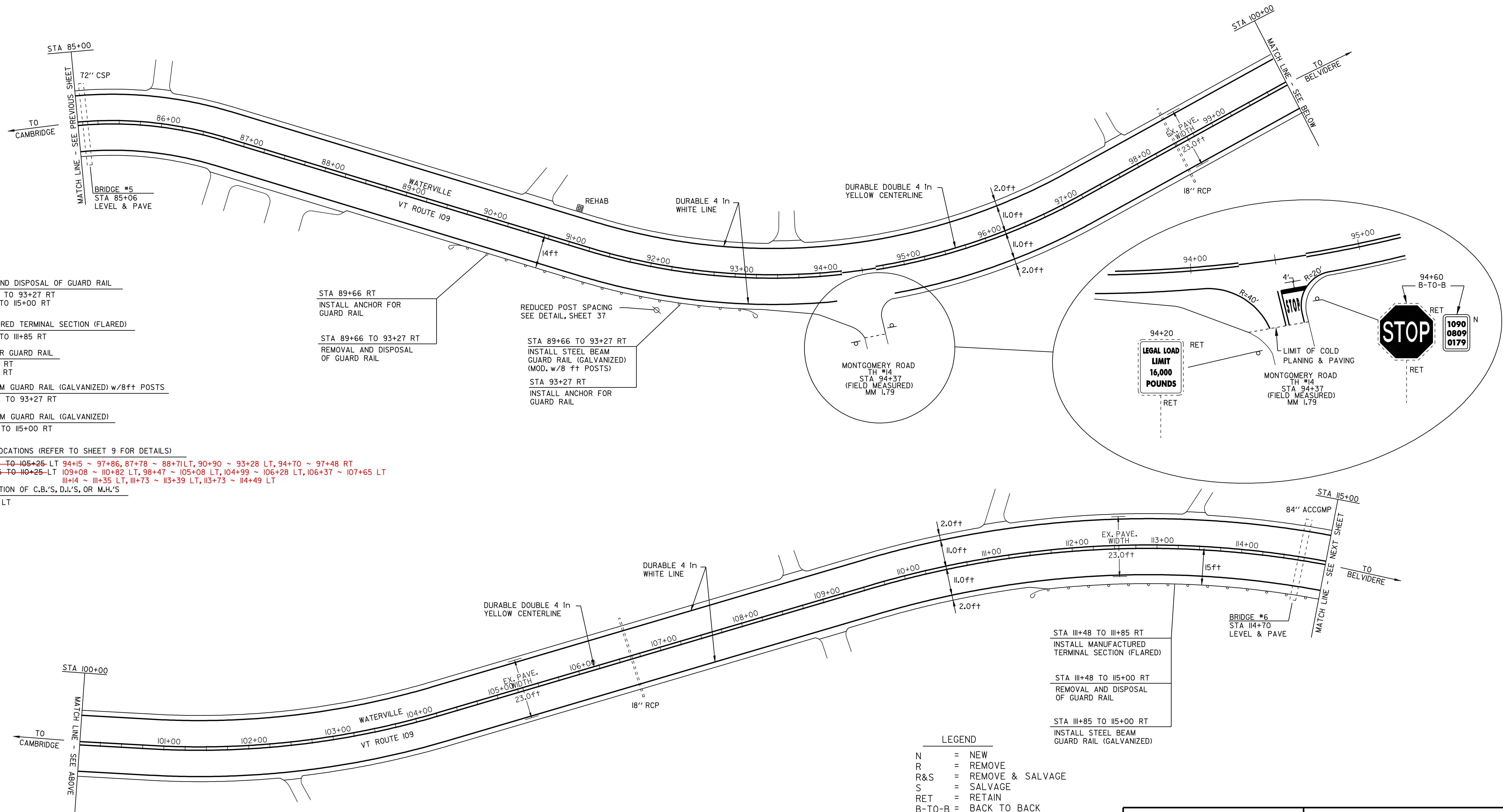


TEMPORARY AND DURABLE 4 in YELLOW LINE  
 STA 85+00 TO 115+00 SOLID LT&RT  
 STA 94+37 DOUBLE SOLID RT  
 (WITH CENTERLINE BREAKS FOR TOWN HIGHWAYS)

TEMPORARY AND DURABLE 4 in WHITE LINE  
 STA 85+00 TO 115+00 SOLID LT&RT  
 (WITH EDGELINE BREAKS FOR TOWN HIGHWAYS)

TEMPORARY AND DURABLE LETTER OR SYMBOL  
 STA 94+37 RT "STOP"

TEMPORARY AND DURABLE 24 in STOP BAR  
 STA 94+37 RT MONTGOMERY ROAD



REMOVAL AND DISPOSAL OF GUARD RAIL  
 STA 89+66 TO 93+27 RT  
 STA 111+85 TO 115+00 RT

MANUFACTURED TERMINAL SECTION (FLARED)  
 STA 111+85 TO 115+00 RT

ANCHOR FOR GUARD RAIL  
 STA 89+66 RT  
 STA 93+27 RT

STEEL BEAM GUARD RAIL (GALVANIZED) w/8ft POSTS  
 STA 89+66 TO 93+27 RT

STEEL BEAM GUARD RAIL (GALVANIZED)  
 STA 111+85 TO 115+00 RT

DITCHING LOCATIONS (REFER TO SHEET 9 FOR DETAILS)

STA 94+00 TO 105+25 LT 94+15 ~ 97+86, 87+78 ~ 88+71 LT, 90+90 ~ 93+28 LT, 94+70 ~ 97+48 RT  
 STA 109+25 TO 110+25 LT 109+08 ~ 110+82 LT, 98+47 ~ 105+08 LT, 104+99 ~ 106+28 LT, 106+37 ~ 107+65 LT  
 111+14 ~ 111+35 LT, 111+73 ~ 113+39 LT, 113+73 ~ 114+49 LT

REHABILITATION OF C.B.'S, D.I.'S, OR M.H.'S  
 STA 91+02 LT

STA 111+85 TO 115+00 RT  
 INSTALL MANUFACTURED  
 TERMINAL SECTION (FLARED)

STA 111+85 TO 115+00 RT  
 REMOVAL AND DISPOSAL  
 OF GUARD RAIL

STA 111+85 TO 115+00 RT  
 INSTALL STEEL BEAM  
 GUARD RAIL (GALVANIZED)

- LEGEND
- N = NEW
  - R = REMOVE
  - R&S = REMOVE & SALVAGE
  - S = SALVAGE
  - RET = RETAIN
  - B-TO-B = BACK TO BACK
  - ⊕ ⊞ □ CATCH BASIN/DI
  - ⊕ □ EXISTING THROAT DI
  - I MARKER POST
  - ⊗ UTILITY POLE
  - UE/I UTIL. POLE W/UNDERGROUND UTIL.
  - ⌋ DRIVE

## PAVING PROJECT LAYOUT SHEET #11

DESIGNED BY	BCE/PJM	DATE	8-05
DRAWN BY	C.E.A., INC.	DATE	8-05
DESIGN FILE NO.	p99ci90.dgn		
PRF FILE	p99ci90III.1	DATE PLOTTED	12-DEC-2008 09
PROJ. NAME	CAMBRIDGE - BELVIDERE		
PROJ. NO.	STP 2219(1)S		
SHEET	20	OF	37 SHEETS