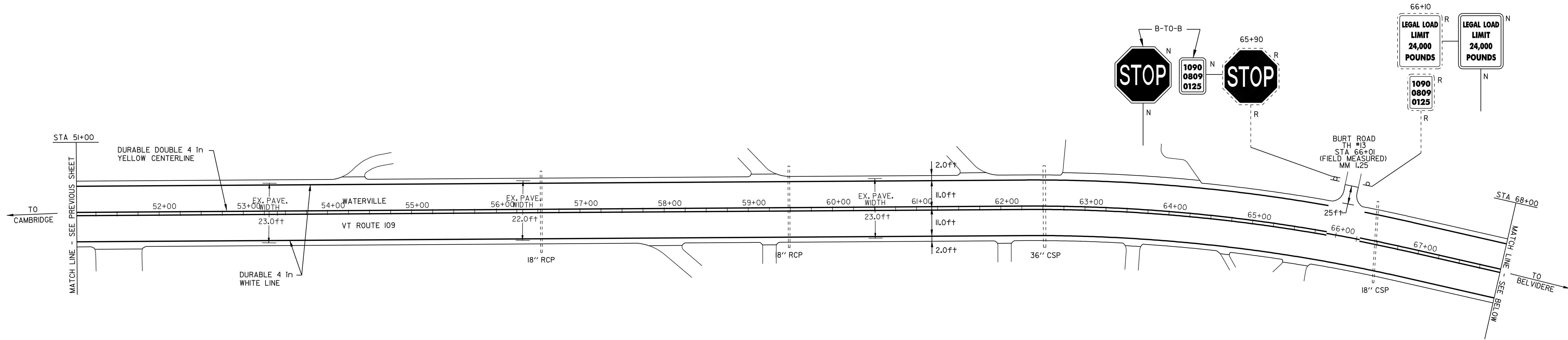


TEMPORARY AND DURABLE 4 in YELLOW LINE
 STA 51+00 TO 85+00 SOLID LT&RT
 (WITH CENTERLINE BREAKS FOR TOWN HIGHWAYS)

TEMPORARY AND DURABLE 4 in WHITE LINE
 STA 51+00 TO 85+00 SOLID LT&RT
 (WITH EDGELINE BREAKS FOR TOWN HIGHWAYS)

REMOVING SIGNS
 3



REMOVAL AND DISPOSAL OF GUARD RAIL

STA 73+88 TO 76+60 RT

ANCHOR FOR GUARD RAIL

STA 73+88 RT
 STA 76+62 RT

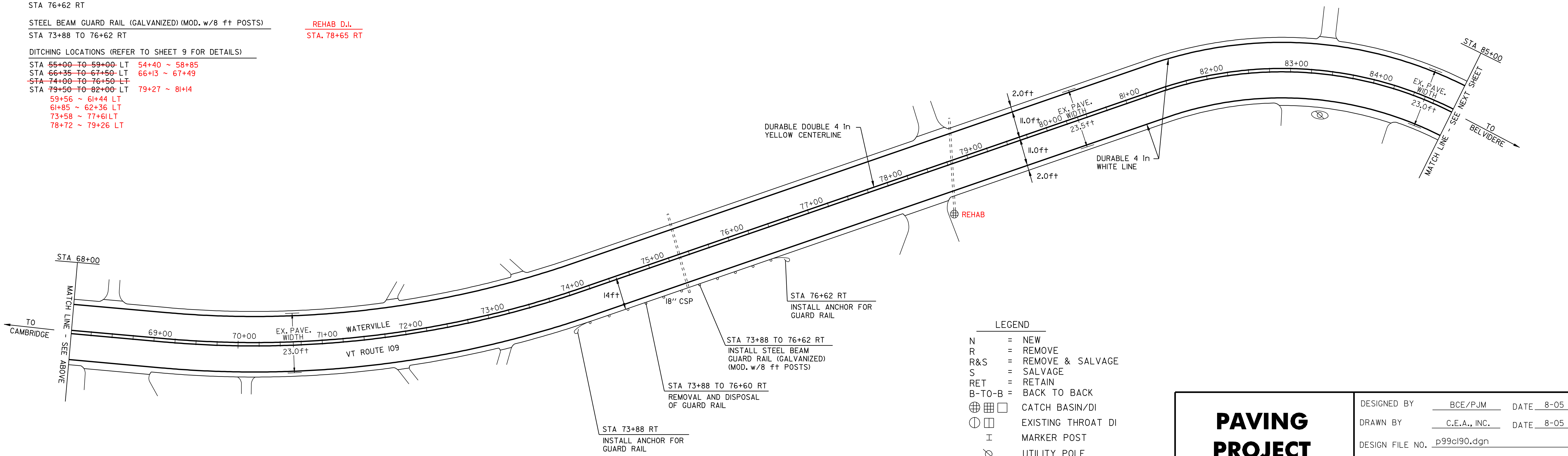
STEEL BEAM GUARD RAIL (GALVANIZED) (MOD. w/8 ft POSTS)

STA 73+88 TO 76+62 RT

REHAB D.I.
 STA. 78+65 RT

DITCHING LOCATIONS (REFER TO SHEET 9 FOR DETAILS)

- STA 55+00 TO 59+00 LT 54+40 ~ 58+85
- STA 66+38 TO 67+50 LT 66+13 ~ 67+49
- STA 74+00 TO 76+50 LT
- STA 79+50 TO 82+00 LT 79+27 ~ 81+14
- 59+56 ~ 61+44 LT
- 61+85 ~ 62+36 LT
- 73+58 ~ 77+61 LT
- 78+72 ~ 79+26 LT



LEGEND

N	=	NEW
R	=	REMOVE
R&S	=	REMOVE & SALVAGE
S	=	SALVAGE
RET	=	RETAIN
B-T-O-B	=	BACK TO BACK
⊕	⊗	CATCH BASIN/DI
⊙	⊠	EXISTING THROAT DI
I		MARKER POST
⊗		UTILITY POLE
⊗		UTIL. POLE W/UNDERGROUND UTIL.
⊎		DRIVE

PAVING PROJECT LAYOUT SHEET #10

DESIGNED BY	BCE/PJM	DATE	8-05
DRAWN BY	C.E.A., INC.	DATE	8-05
DESIGN FILE NO.	p99ci90.dgn		
PRF FILE	p99ci90i10.1	DATE PLOTTED	12-DEC-2008 09
PROJ. NAME	CAMBRIDGE - BELVIDERE		
PROJ. NO.	STP 2219(1)S		
SHEET	19	OF	37 SHEETS