

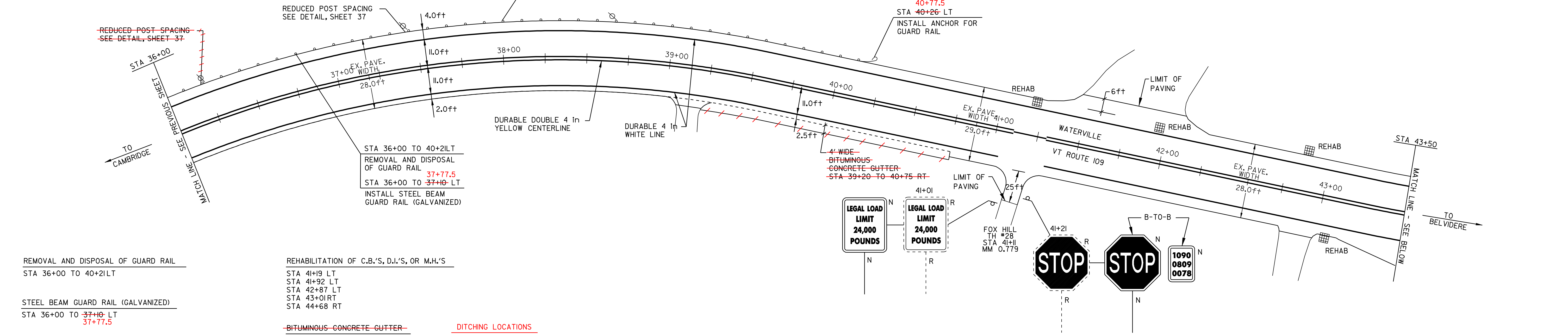
TEMPORARY AND DURABLE 4 in YELLOW LINE  
 STA 36+00 TO 5+00 SOLID LT&RT  
 STA 49+52 DOUBLE SOLID LT  
 (WITH CENTERLINE BREAKS FOR TOWN HIGHWAYS)

TEMPORARY AND DURABLE 4 in WHITE LINE  
 STA 36+00 TO 5+00 SOLID LT&RT  
 (WITH EDGELINE BREAKS FOR TOWN HIGHWAYS)

REMOVING SIGNS  
 -R-

TEMPORARY AND DURABLE LETTER OR SYMBOL  
 STA 49+52 LT "STOP"

TEMPORARY AND DURABLE 24 in STOP BAR  
 STA 49+52 LT LAPLAND ROAD



REMOVAL AND DISPOSAL OF GUARD RAIL  
 STA 36+00 TO 40+21LT

REHABILITATION OF C.B.'S, D.I.'S, OR M.H.'S  
 STA 41+9 LT  
 STA 41+92 LT  
 STA 42+87 LT  
 STA 43+01RT  
 STA 44+68 RT

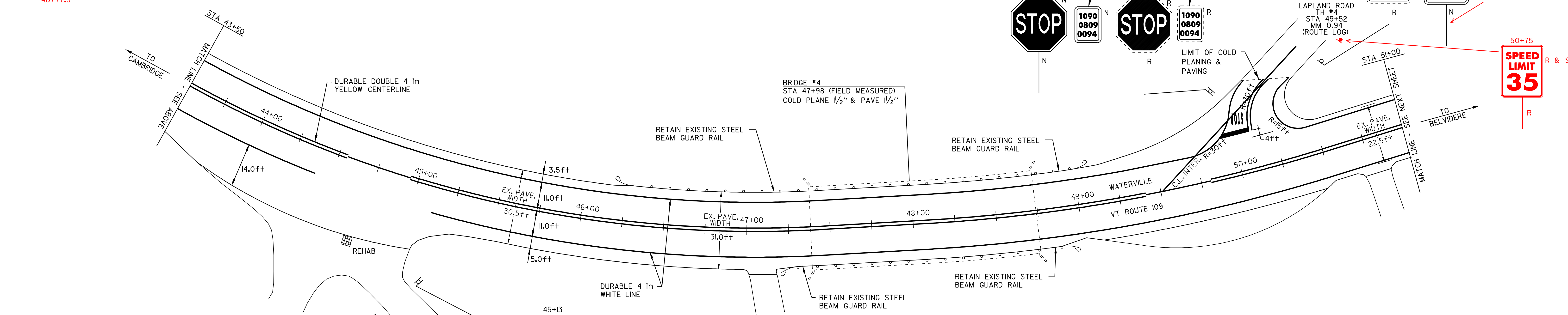
STEEL BEAM GUARD RAIL (GALVANIZED)  
 STA 36+00 TO 37+00 LT  
 37+77.5

~~BITUMINOUS CONCRETE CUTTER~~  
~~STA 39+20 TO 40+75 RT~~

DITCHING LOCATIONS  
 49+14 ~ 49+54 LT

STEEL BEAM GUARD RAIL (GALVANIZED) (MOD. w/8 ft POSTS)  
 STA 37+00 TO 40+26-LT  
 37+77.5 40+77.5

ANCHOR FOR GUARD RAIL  
 STA 40+26-LT  
 40+77.5



LEGAL LOAD LIMIT 24,000 POUNDS  
 LEGAL LOAD LIMIT 24,000 POUNDS

SPEED LIMIT 35

STOP STOP

- LEGEND
- N = NEW
  - R = REMOVE
  - R&S = REMOVE & SALVAGE
  - S = SALVAGE
  - RET = RETAIN
  - B-TO-B = BACK TO BACK
  - ⊕ ⊞ ⊠ CATCH BASIN/DI
  - ⊙ ⊠ EXISTING THROAT DI
  - I MARKER POST
  - ⊗ UTILITY POLE
  - ⊗/I UTIL. POLE W/UNDERGROUND UTIL.
  - ⊏ DRIVE

REMOVED & SALVAGED ONTO LEGAL LOAD LIMIT SIGN ASSEMBLY

REMOVED & SALVAGED ONTO LEGAL LOAD LIMIT SIGN ASSEMBLY

## PAVING PROJECT LAYOUT SHEET #9

DESIGNED BY	BCE/PJM	DATE	8-05
DRAWN BY	C.E.A., INC.	DATE	8-05
DESIGN FILE NO.	p99ci90.dgn		
PRF FILE	p99ci90i09.i	DATE PLOTTED	12-DEC-2008 09
PROJ. NAME	CAMBRIDGE - BELVIDERE		
PROJ. NO.	STP 2219(1)S		
SHEET	18	OF	37 SHEETS