

TEMPORARY AND DURABLE 4 in YELLOW LINE  
TOWN OF CAMBRIDGE  
STA 195+00 TO 200+10

TEMPORARY AND DURABLE 4 in WHITE LINE  
TOWN OF CAMBRIDGE  
STA 165+00 TO 195+00

TEMPORARY AND DURABLE LETTER OR SYMBOL  
TOWN OF WATERVILLE  
STA 1+72 RT  
STA 10+27 RT

TEMPORARY AND DURABLE 24 in STOP BAR  
TOWN OF WATERVILLE  
STA 1+72 RT  
STA 10+27 RT

REMOVING SIGNS  
TOWN OF WATERVILLE  
5

TOWN OF WATERVILLE  
STA 0+00 TO 2+00  
STA 1+72  
STA 10+27  
(WITH CENTERLINE BREAKS FOR TOWN HIGHWAYS)

TOWN OF WATERVILLE  
STA 0+00 TO 2+00  
(WITH EDGE LINE BREAKS FOR TOWN HIGHWAYS)

REMOVAL AND DISPOSAL OF GUARD RAIL  
STA 15+80 TO 18+92 LT  
12+42

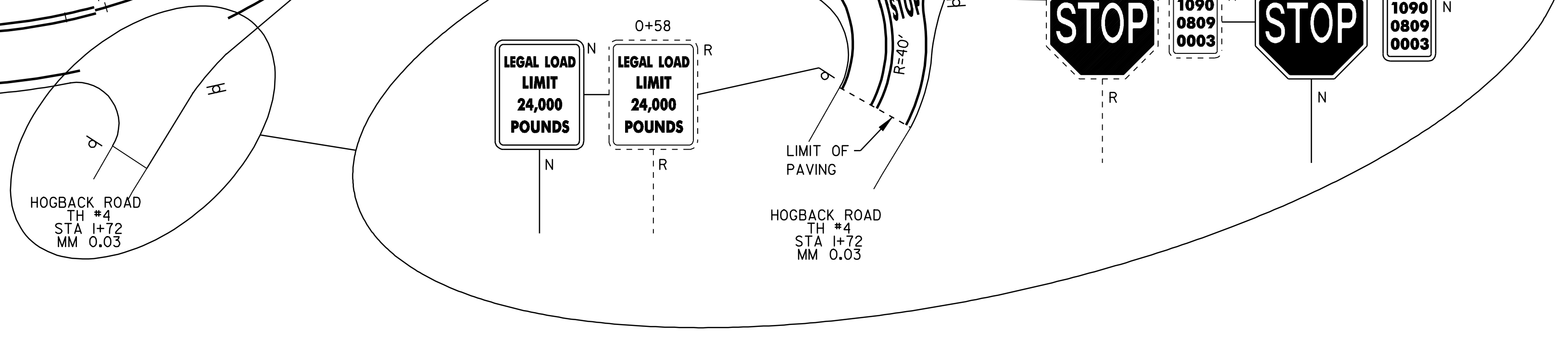
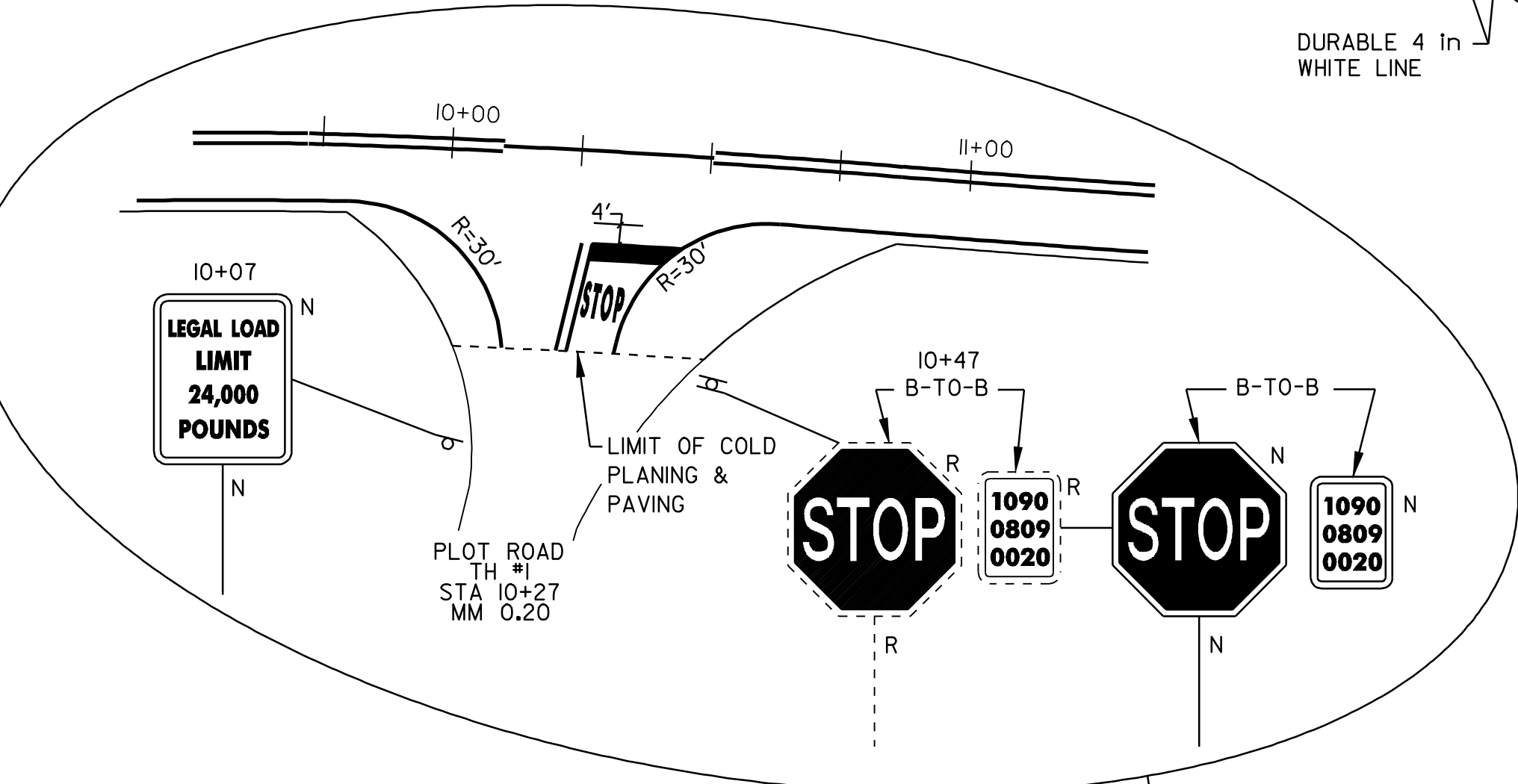
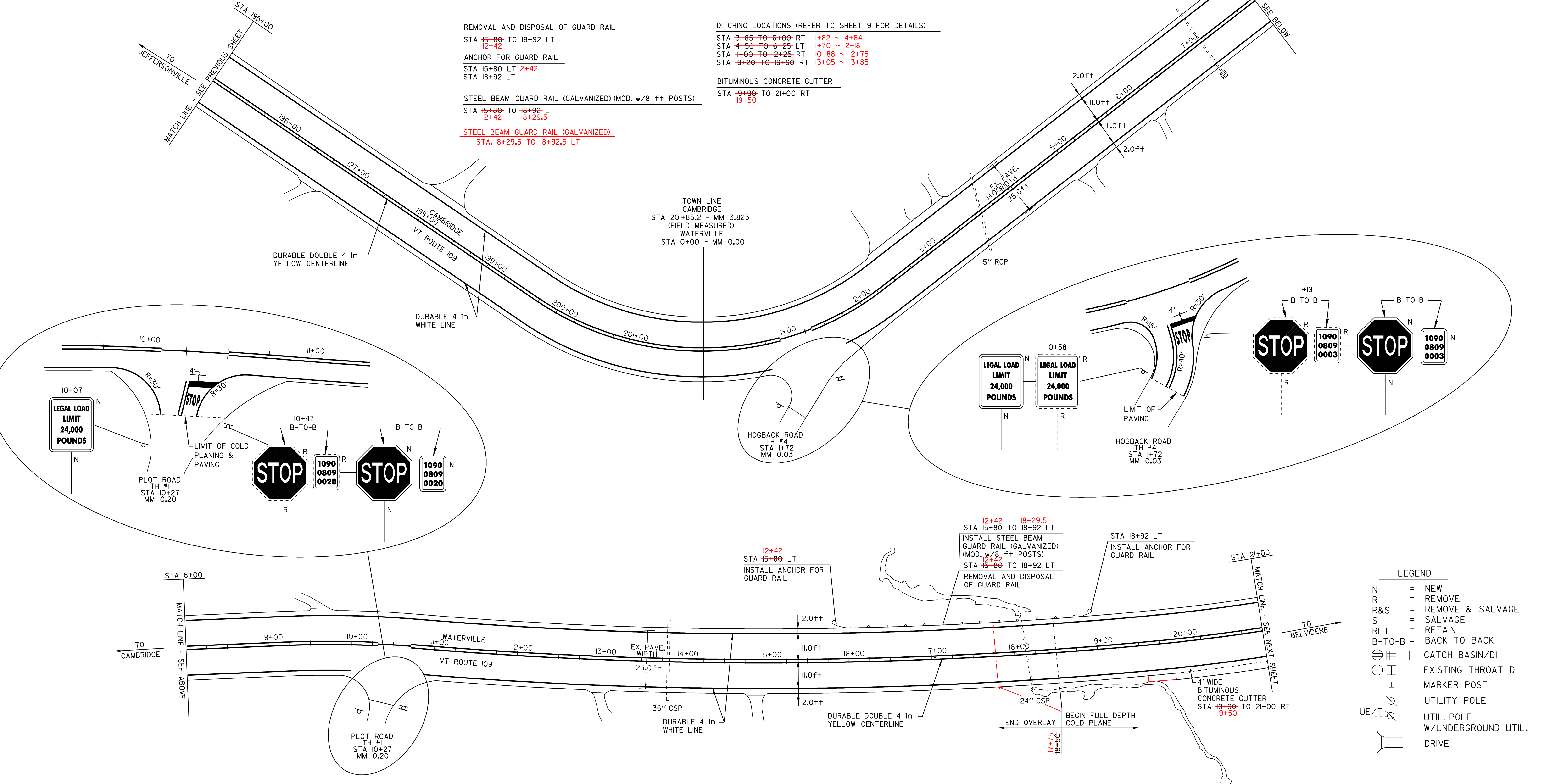
ANCHOR FOR GUARD RAIL  
STA 15+80 LT 12+42  
STA 18+92 LT

STEEL BEAM GUARD RAIL (GALVANIZED) (MOD. w/8 ft POSTS)  
STA 15+80 TO 18+92 LT  
12+42 18+29.5

STEEL BEAM GUARD RAIL (GALVANIZED)  
STA. 18+29.5 TO 18+92.5 LT

DITCHING LOCATIONS (REFER TO SHEET 9 FOR DETAILS)  
STA 3+85 TO 6+00 RT 1+82 ~ 4+84  
STA 4+50 TO 6+25 LT 1+70 ~ 2+18  
STA 11+00 TO 12+25 RT 10+88 ~ 12+75  
STA 19+20 TO 19+90 RT 13+05 ~ 13+85

BITUMINOUS CONCRETE GUTTER  
STA 19+90 TO 21+00 RT  
19+50



LEGEND

N	=	NEW
R	=	REMOVE
R&S	=	REMOVE & SALVAGE
S	=	SALVAGE
RET	=	RETAIN
B-T-O-B	=	BACK TO BACK
⊕	=	CATCH BASIN/DI
⊙	=	EXISTING THROAT DI
I	=	MARKER POST
⊗	=	UTILITY POLE
⊗	=	UTIL. POLE W/UNDERGROUND UTIL.
⊏	=	DRIVE

## PAVING PROJECT LAYOUT SHEET #7

DESIGNED BY	BCE/PJM	DATE	8-05
DRAWN BY	C.E.A., INC.	DATE	8-05
DESIGN FILE NO.	p99ci90.dgn		
PRF FILE	p99ci90i07.1	DATE PLOTTED	12-DEC-2008 09
PROJ. NAME	CAMBRIDGE - BELVIDERE		
PROJ. NO.	STP 2219(1)S		
SHEET	16	OF	37 SHEETS