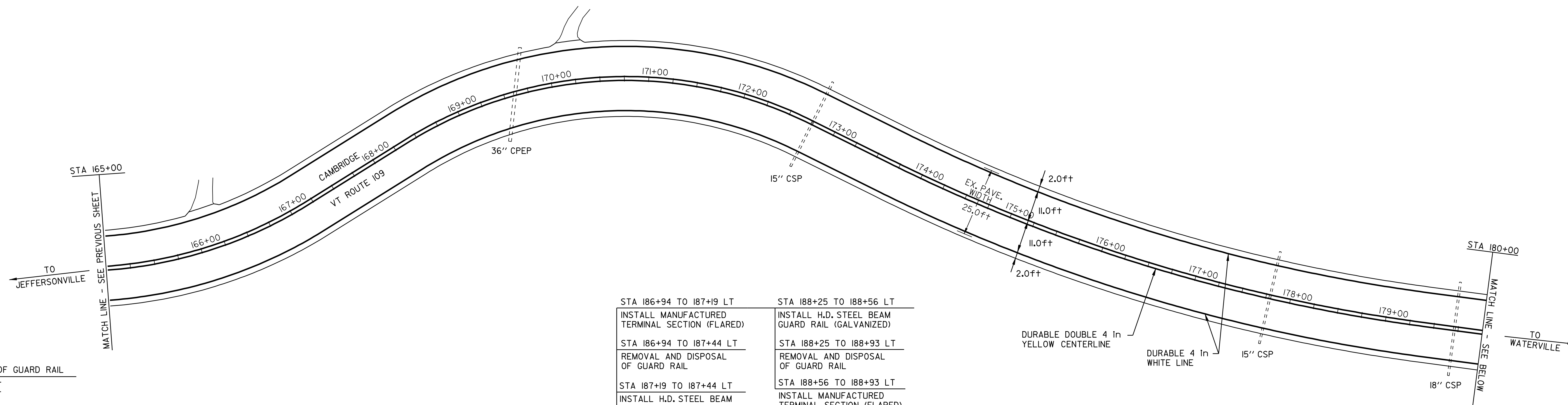


TEMPORARY AND DURABLE 4 in YELLOW LINE  
 STA 165+00 TO 195+00 SOLID LT&RT  
 (WITH CENTERLINE BREAKS FOR TOWN HIGHWAYS)

TEMPORARY AND DURABLE 4 in WHITE LINE  
 STA 165+00 TO 195+00 SOLID LT&RT  
 (WITH EDGELINE BREAKS FOR TOWN HIGHWAYS)

REMOVING SIGNS  
 7



REMOVAL AND DISPOSAL OF GUARD RAIL  
 STA 186+75 TO 187+44 RT  
 STA 186+94 TO 187+44 LT  
 STA 188+25 TO 189+01 RT  
 STA 188+25 TO 188+93 LT

REMOVAL OF EXISTING RAILING  
 STA 187+44 TO 188+25 RT  
 STA 187+44 TO 188+25 LT

BRIDGE RAIL-H.D.S.B. FASCIA MOUNTED, MOD. I  
 STA 187+44 TO 188+25 RT  
 STA 187+44 TO 188+25 LT

H.D. STEEL BEAM GUARD RAIL (GALVANIZED)  
 STA 187+12 TO 187+44 RT  
 STA 187+19 TO 187+44 LT  
 STA 188+25 TO 188+50 RT  
 STA 188+25 TO 188+56 LT

STEEL BEAM GUARD RAIL (GALVANIZED)  
 STA 188+50 TO 188+64 RT

MANUFACTURED TERMINAL SECTION (FLARED)  
 STA 186+75 TO 187+12 RT  
 STA 186+94 TO 187+19 LT  
 STA 188+64 TO 189+01 RT  
 STA 188+56 TO 188+93 LT

DITCHING LOCATIONS (REFER TO SHEET 9 FOR DETAILS)

STA 168+00 TO 172+75 LT 168+34 ~ 173+36  
 STA 176+50 TO 178+00 LT 176+10 ~ 180+17  
 STA 180+50 TO 183+50 LT 183+72

STA 186+94 TO 187+19 LT  
 INSTALL MANUFACTURED TERMINAL SECTION (FLARED)

STA 186+94 TO 187+44 LT  
 REMOVAL AND DISPOSAL OF GUARD RAIL

STA 187+19 TO 187+44 LT  
 INSTALL H.D. STEEL BEAM GUARD RAIL (GALVANIZED)

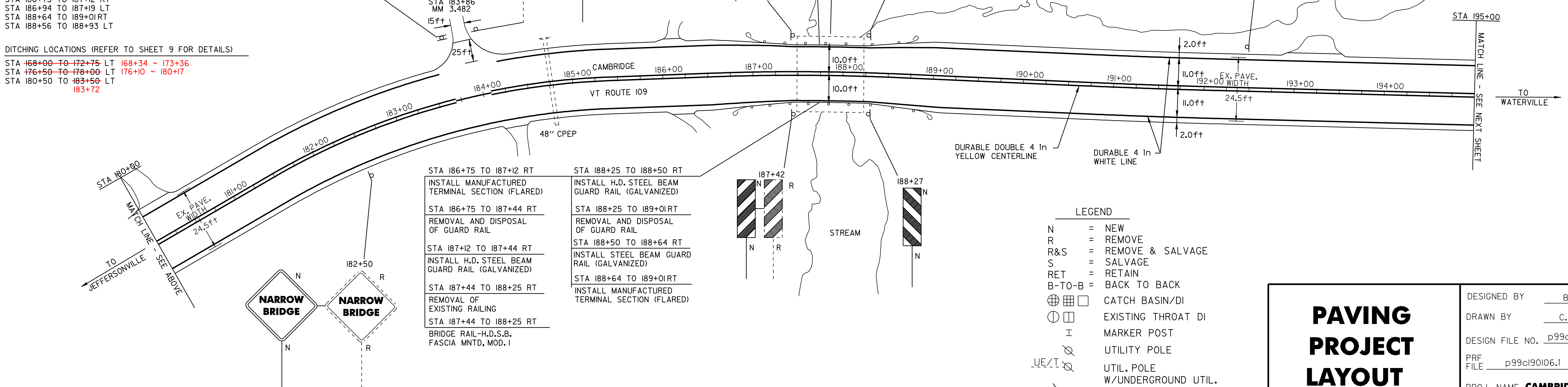
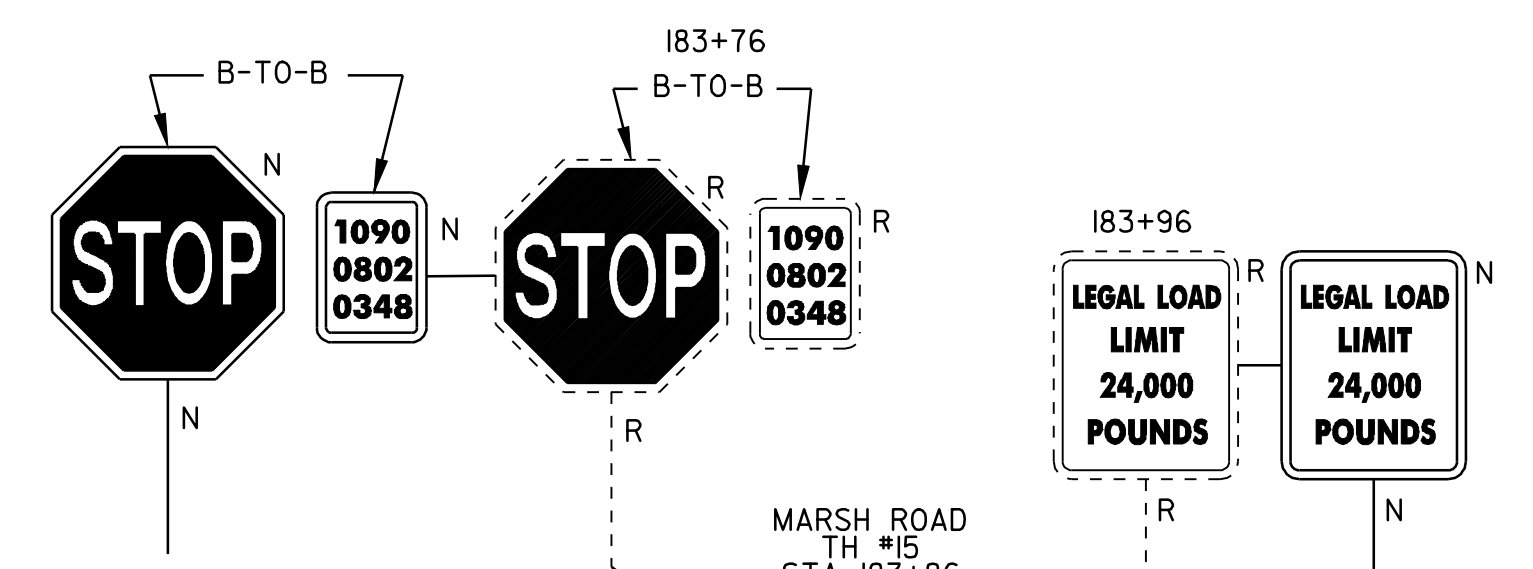
STA 187+44 TO 188+25 LT  
 REMOVAL OF EXISTING RAILING

STA 187+44 TO 188+25 LT  
 BRIDGE RAIL-H.D.S.B. FASCIA MNTD, MOD. I

STA 188+25 TO 188+56 LT  
 INSTALL H.D. STEEL BEAM GUARD RAIL (GALVANIZED)

STA 188+25 TO 188+93 LT  
 REMOVAL AND DISPOSAL OF GUARD RAIL

STA 188+56 TO 188+93 LT  
 INSTALL MANUFACTURED TERMINAL SECTION (FLARED)



STA 186+75 TO 187+12 RT  
 INSTALL MANUFACTURED TERMINAL SECTION (FLARED)

STA 186+75 TO 187+44 RT  
 REMOVAL AND DISPOSAL OF GUARD RAIL

STA 187+12 TO 187+44 RT  
 INSTALL H.D. STEEL BEAM GUARD RAIL (GALVANIZED)

STA 187+44 TO 188+25 RT  
 REMOVAL OF EXISTING RAILING

STA 187+44 TO 188+25 RT  
 BRIDGE RAIL-H.D.S.B. FASCIA MNTD, MOD. I

STA 188+25 TO 188+50 RT  
 INSTALL H.D. STEEL BEAM GUARD RAIL (GALVANIZED)

STA 188+25 TO 189+01 RT  
 REMOVAL AND DISPOSAL OF GUARD RAIL

STA 188+50 TO 188+64 RT  
 INSTALL STEEL BEAM GUARD RAIL (GALVANIZED)

STA 188+64 TO 189+01 RT  
 INSTALL MANUFACTURED TERMINAL SECTION (FLARED)

- LEGEND
- N = NEW
  - R = REMOVE
  - R&S = REMOVE & SALVAGE
  - S = SALVAGE
  - RET = RETAIN
  - B-TO-B = BACK TO BACK
  - ⊕ ⊞ ⊠ = CATCH BASIN/DI
  - ⊙ ⊞ = EXISTING THROAT DI
  - I = MARKER POST
  - ⊗ ⊘ = UTILITY POLE
  - ⊗ ⊘ ⊚ = UTIL. POLE W/UNDERGROUND UTIL.
  - ⊚ = DRIVE

## PAVING PROJECT LAYOUT SHEET #6

DESIGNED BY BCE/PJM DATE 8-05

DRAWN BY C.E.A., INC. DATE 8-05

DESIGN FILE NO. p99ci90.dgn

PRF FILE p99ci90i06.1 DATE 12-DEC-2008

PROJ. NAME **CAMBRIDGE - BELVIDERE**

PROJ. NO. **STP 2219(1)S**

SHEET **15** OF **37** SHEETS