

TEMPORARY AND DURABLE 4 in YELLOW LINE  
STA 0+00 TO 30+00  
SOLID LT&RT

TEMPORARY AND DURABLE 4 in WHITE LINE  
STA 0+00 TO 30+00  
SOLID LT&RT

REMOVING SIGNS  
I

TEMPORARY AND DURABLE 24 in STOP BAR  
STA 0+44 LT  
VT ROUTE 109

TEMPORARY AND DURABLE LETTER OR SYMBOL  
STA 0+50 LT  
STA 8+20 LT  
"STOP"  
"STOP AHEAD"

REMOVAL AND DISPOSAL OF GUARD RAIL  
STA 4+23 TO 8+35 RT

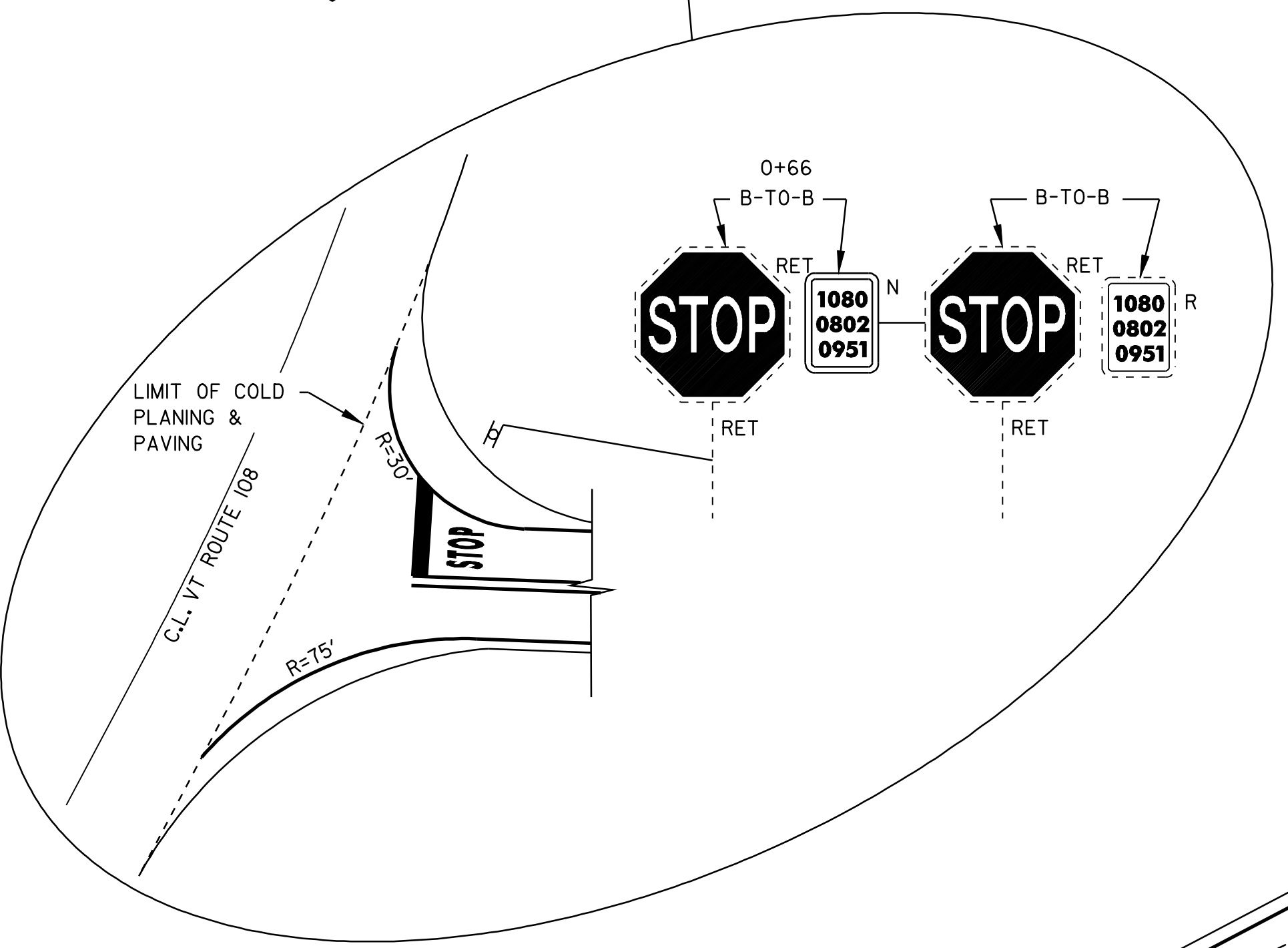
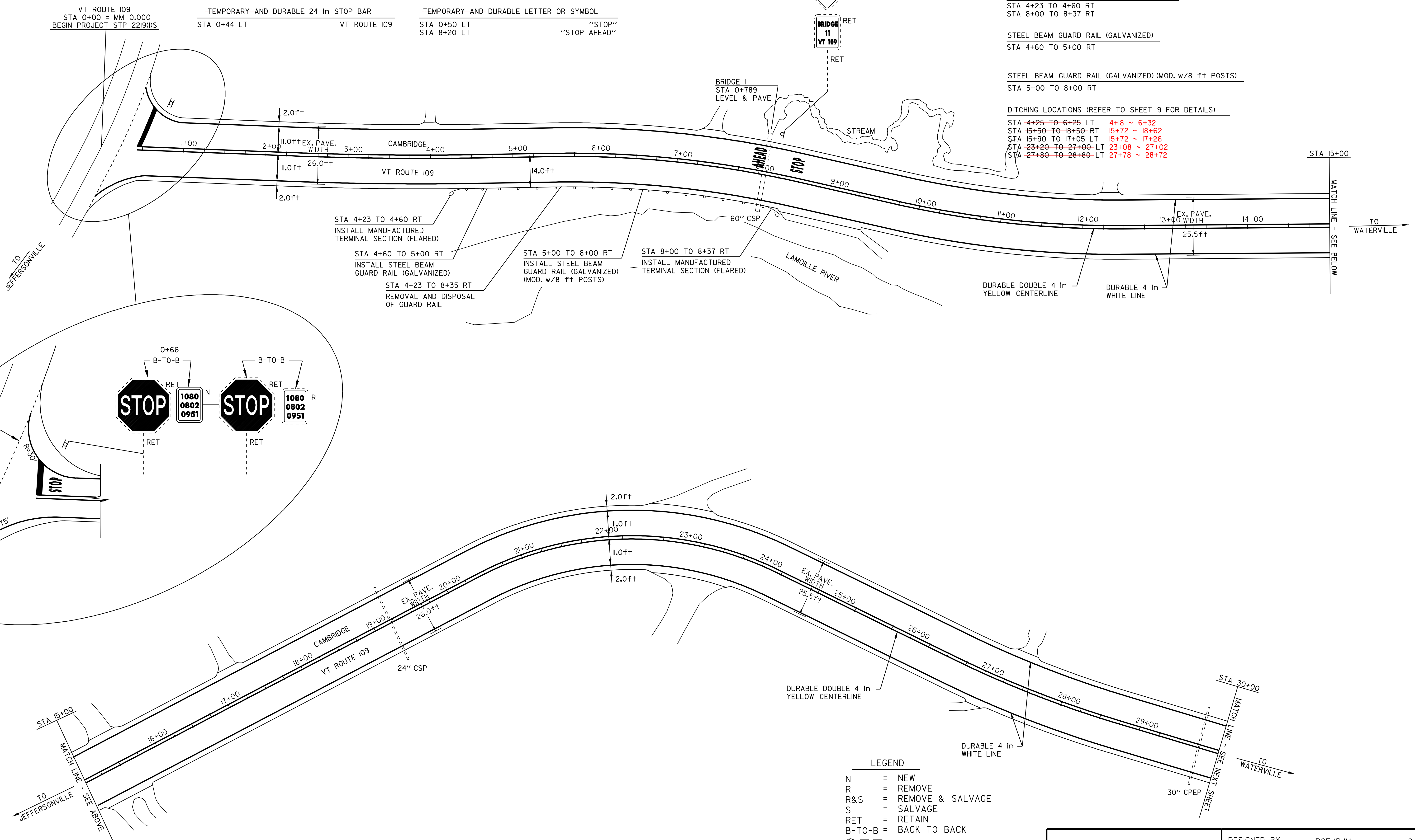
MANUFACTURED TERMINAL SECTION (FLARED)  
STA 4+23 TO 4+60 RT  
STA 8+00 TO 8+37 RT

STEEL BEAM GUARD RAIL (GALVANIZED)  
STA 4+60 TO 5+00 RT

STEEL BEAM GUARD RAIL (GALVANIZED) (MOD. w/8 ft POSTS)  
STA 5+00 TO 8+00 RT

DITCHING LOCATIONS (REFER TO SHEET 9 FOR DETAILS)

STA 4+25 TO 6+25 LT 4+18 ~ 6+32  
STA 15+50 TO 18+50 RT 15+72 ~ 18+62  
STA 15+90 TO 17+05 LT 15+72 ~ 17+26  
STA 23+20 TO 27+00 LT 23+08 ~ 27+02  
STA 27+80 TO 28+80 LT 27+78 ~ 28+72



- LEGEND
- N = NEW
  - R = REMOVE
  - R&S = REMOVE & SALVAGE
  - S = SALVAGE
  - RET = RETAIN
  - B-T-O-B = BACK TO BACK
  - ⊕ ⊞ □ = CATCH BASIN/DI
  - ⊙ ⊠ = EXISTING THROAT DI
  - I = MARKER POST
  - ⊗ = UTILITY POLE
  - ⊗/I = UTIL. POLE W/UNDERGROUND UTIL.
  - ⌌ = DRIVE

## PAVING PROJECT LAYOUT SHEET #1

DESIGNED BY	BCE/PJM	DATE	8-05
DRAWN BY	C.E.A., INC.	DATE	8-05
DESIGN FILE NO.	p99c190.dgn		
PRF FILE	p99c190101.i	DATE PLOTTED	12-DEC-2008 03
PROJ. NAME	CAMBRIDGE - BELVIDERE		
PROJ. NO.	STP 2219(1)S		
SHEET	10	OF	37 SHEETS