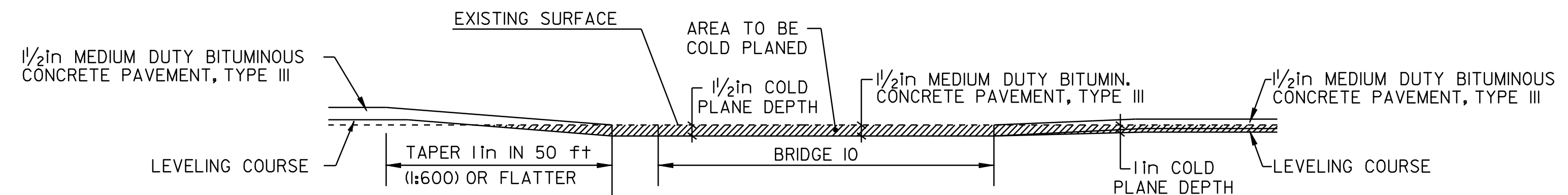


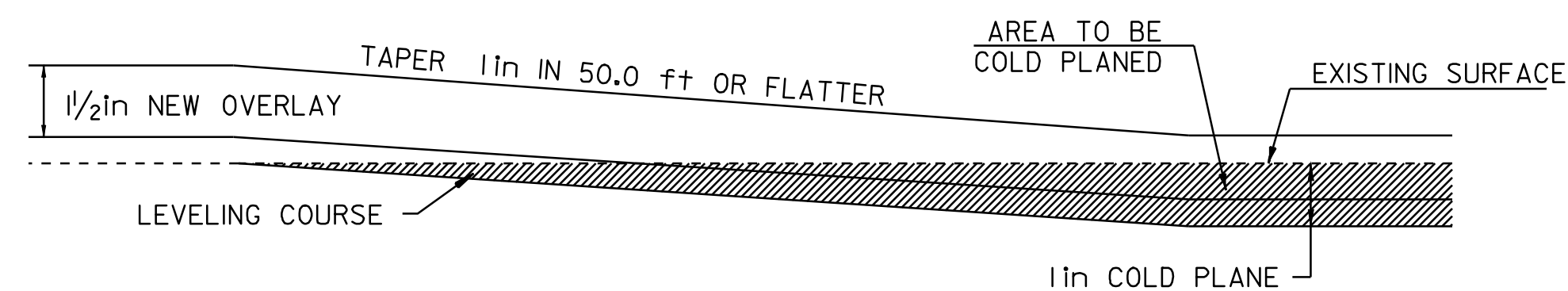
-APPROACH AREA DETAIL-

CAMBRIDGE
STA ~~0+21~~ TO ~~0+96~~ (BEGIN PROJECT)
 0+00 4+00



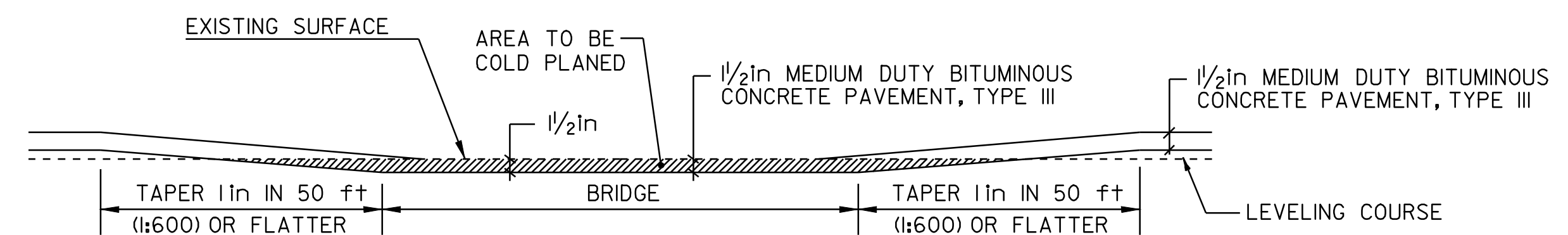
- TRANSITION AREA DETAIL -

BELVIDERE
STA ~~132+63~~ (BRIDGE #10 TO END OF PROJECT)
 130+50



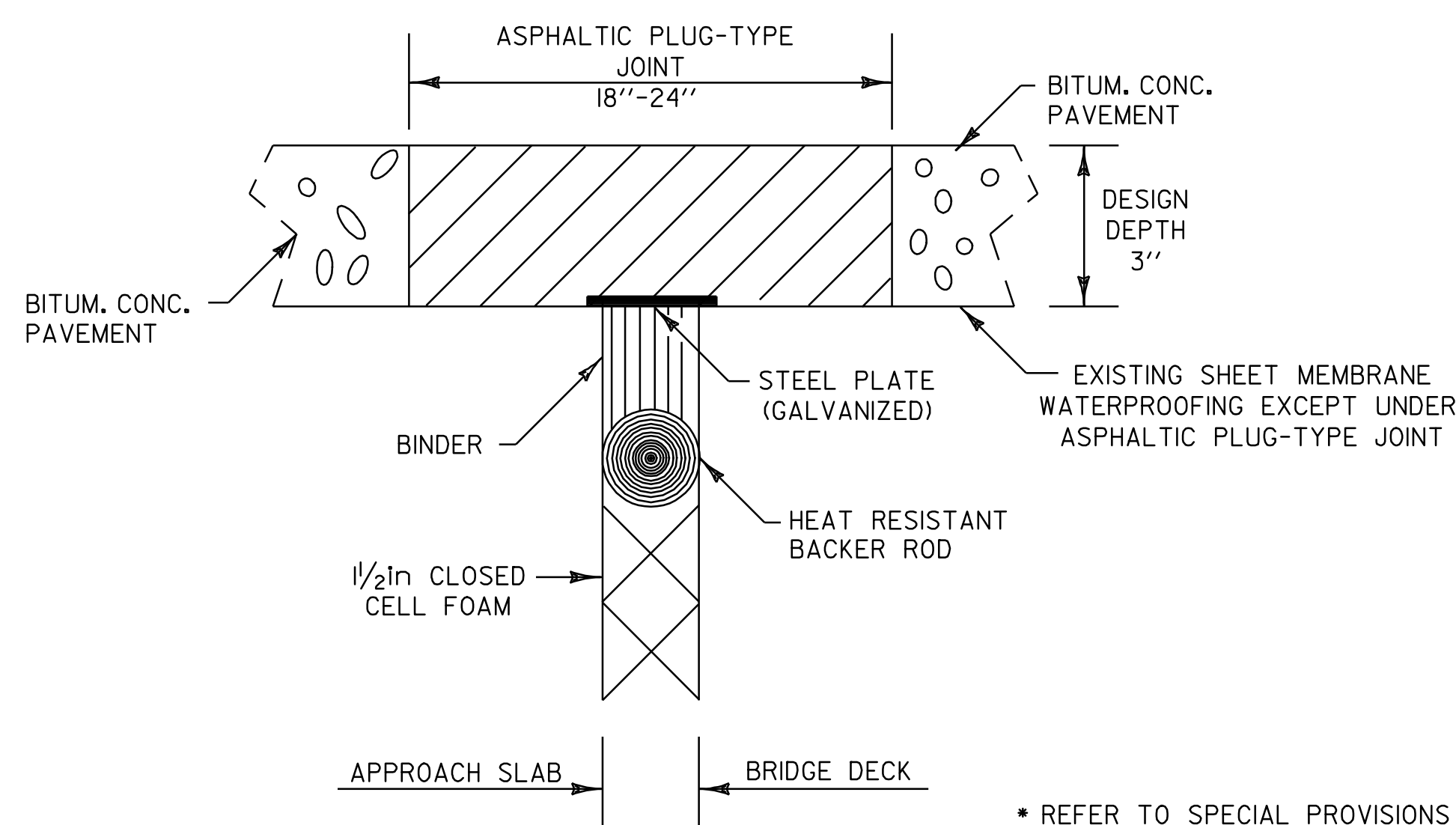
-TRANSITION AREA DETAIL-

WATERVILLE
STA ~~18+00~~ to ~~18+50~~ (END OVERLAY/BEGIN COLD PLANE)
STA ~~34+00~~ TO ~~34+50~~ (END COLD PLANE/BEGIN OVERLAY)
 17+25 17+75
 34+50 35+00



-COLD PLANING DETAIL @ BRIDGES-

CAMBRIDGE
BRIDGE #2 - STA 143+77
BRIDGE #3 - STA 187+90
WATERVILLE
BRIDGE #4 - STA 47+98
BELVIDERE
BRIDGE #7 - STA 8+07



LOCATION

CAMBRIDGE

BRIDGE #3 (20ft) - STA 187+48
 BRIDGE #3 (20ft) - STA 188+22

WATERVILLE

BRIDGE #4 (30ft) - STA 47+38
 BRIDGE #4 (~~30ft~~) - STA 48+76 31ft

BELVIDERE

BRIDGE #7 (~~29ft~~) - STA 7+56 28ft
 BRIDGE #7 (~~29ft~~) - STA 8+41 28ft
 BRIDGE #10 (20ft) - STA 132+40
 BRIDGE #10 (20ft) - STA 132+83

* REFER TO SPECIAL PROVISIONS FOR BASIS OF PAYMENT

- ASPHALTIC PLUG TYPE JOINT DETAIL -

PROJECT TYPICAL SHEET #2

DESIGNED BY BCE/PJM DATE 8-05
 DRAWN BY C.E.A., INC. DATE 8-05
 DESIGN FILE NO. p99cl90.dgn
 PRF FILE p99cl90+yp2.i DATE PLOTTED 12-DEC-2008 09
 PROJ. NAME CAMBRIDGE - BELVIDERE
 PROJ. NO. STP 2219(1)S
 SHEET 3 OF 37 SHEETS