

~~646.402 DURABLE 4 INCH WHITE LINE, THERMOPLASTIC~~
~~STA. 305+25 - STA. 321+50 (SOLID LT & RT)~~

~~646.602 TEMPORARY 4 INCH WHITE LINE, PAINT~~
~~STA. 305+25 - STA. 321+50 (SOLID LT & RT)~~

~~646.412 DURABLE 4 INCH YELLOW LINE, THERMOPLASTIC~~
~~STA. 305+25 - STA. 321+50 (SOLID LT & RT)~~

~~646.612 TEMPORARY 4 INCH YELLOW LINE, PAINT~~
~~STA. 305+25 - STA. 321+50 (SOLID LT & RT)~~

~~621.20 STEEL BEAM GUARDRAIL, GALVANIZED~~
~~STA. 306+67.50 - STA. 313+42.50 LT~~
~~STA. 309+37.50 - STA. 313+87.50 RT~~
~~STA. 319+03.50 - STA. 321+50.00 RT~~
~~STA. 318+88.50 - STA. 319+03.00 LT~~

~~621.50 MANUFACTURED TERMINAL SECTION, FLARED~~
~~26.00 STA. 306+30.00 - STA. 306+67.50 LT~~
~~308+96.50 STA. 309+00.00 - STA. 309+37.50 RT~~
~~43.00 STA. 313+42.50 - STA. 313+80.00 LT~~
~~STA. 313+87.50 - STA. 314+25.00 RT~~
~~80.00 STA. 318+66.00 - STA. 319+03.50 RT~~

~~676.10 DELINEATOR WITH STEEL POST~~
~~STA. 306+30.00 LT~~
~~STA. 309+00.00 RT~~
~~STA. 313+80.00 LT~~
~~STA. 314+25.00 RT~~
~~STA. 318+66.00 RT~~

~~675.50 REMOVING SIGNS~~
~~AS SHOWN - 2~~

CURVE #10
 DELTA = 25°54'24"
 D = 7°09'43"
 R = 800.00'
 T = 184.01'
 L = 361.73'
 BANKING 0.08 FT/FT
 190' RUNOFF (50 MPH)
 SEE SUPERELEVATION SHEET 2
 FOR BANKING DETAIL

CURVE #11
 DELTA = 48°27'00"
 D = 7°38'22"
 R = 750.00'
 T = 337.46'
 L = 634.21'
 BANKING 0.08 FT/FT
 190' RUNOFF (50 MPH)
 SEE SUPERELEVATION SHEET 2
 FOR BANKING DETAIL

~~621.51 MANUFACTURED TERMINAL SECTION, TANGENT~~
~~STA. 313+26 - STA. 313+76 LT~~
~~STA. 313+59 - STA. 214+09 RT~~

~~621.60 ANCHOR FOR STEEL BEAM RAIL~~
~~STA. 319+03 LT~~

~~621.205 STEEL BEAM GUARDRAIL, GALVANIZED W/8' POSTS~~
~~STA. 306+63.5 - STA. 313+26.0 LT~~
~~STA. 309+34.0 - STA. 313+59.0 RT~~
~~STA. 318+80.0 - STA. 321+50.0 RT~~
~~STA. 319+03.0 - STA. 321+50.0 LT~~

~~646.402 DURABLE 4 INCH WHITE LINE, THERMOPLASTIC~~
~~STA. 321+50 - STA. 337+25 (SOLID LT & RT)~~

~~646.602 TEMPORARY 4 INCH WHITE LINE, PAINT~~
~~STA. 321+50 - STA. 337+25 (SOLID LT & RT)~~

~~621.20 STEEL BEAM GUARDRAIL, GALVANIZED~~
~~STA. 321+50.00 - STA. 321+66.00 RT~~
~~94.00 STA. 321+87.50 - STA. 335+75.00 RT~~
~~STA. 322+12.50 - STA. 323+37.50 LT~~
~~77.00 STA. 326+67.50 - STA. 329+80.00 LT~~
~~STA. 330+00.00 - STA. 332+00.00 LT~~
~~STA. 332+62.50 - STA. 337+25.00 LT~~
~~621.205 STEEL BEAM GUARDRAIL, GALVANIZED W/8 FEET POSTS~~
~~STA. 332+00.00 - STA. 332+62.50 LT~~
~~621.50 MANUFACTURED TERMINAL SECTION, FLARED~~
~~STA. 321+75.00 - STA. 322+12.50 LT~~
~~39.00 STA. 323+37.50 - STA. 323+75.00 LT~~
~~39.50 STA. 326+30.00 - STA. 326+67.50 LT~~
~~STA. 335+75.00 - STA. 336+12.50 RT~~

~~621.80 REMOVAL AND DISPOSAL OF GUARDRAIL~~
~~STA. 321+50.00 - STA. 321+66.00 RT~~
~~77.00 STA. 321+75.00 - STA. 323+75.00 LT~~
~~65.00 STA. 321+90.00 - STA. 330+15.00 RT~~
~~41.50 STA. 326+30.00 - STA. 329+80.00 LT~~
~~330+11.00 STA. 329+98.00 - STA. 335+98.00 LT~~
~~STA. 332+35.00 - STA. 336+10.00 RT~~

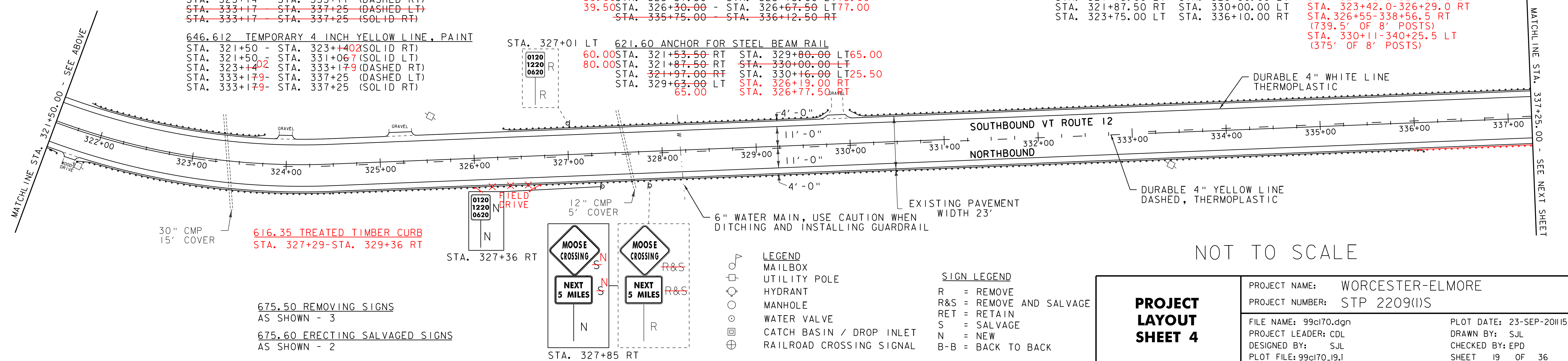
~~621.205 STEEL BEAM GUARDRAIL, GALV. W/8' POSTS~~
~~STA. 321+50-321+66 RT~~
~~STA. 323+14-323+39 LT~~
~~STA. 326+77.5-329+75.0 LT~~
~~STA. 321+50.0-321+85.0 LT~~
~~STA. 323+42.0-326+29.0 RT~~
~~STA. 326+55-338+56.5 RT~~
~~(739.5' OF 8' POSTS)~~
~~STA. 330+11-340+25.5 LT~~
~~(375' OF 8' POSTS)~~

~~646.412 DURABLE 4 INCH YELLOW LINE, THERMOPLASTIC~~
~~STA. 321+50 - STA. 323+14 (SOLID RT)~~
~~STA. 321+50 - STA. 331+06 (SOLID LT)~~
~~STA. 323+14 - STA. 333+17 (DASHED RT)~~
~~STA. 333+17 - STA. 337+25 (DASHED LT)~~
~~STA. 333+17 - STA. 337+25 (SOLID RT)~~

~~646.612 TEMPORARY 4 INCH YELLOW LINE, PAINT~~
~~STA. 321+50 - STA. 323+14 (SOLID RT)~~
~~STA. 321+50 - STA. 331+06 (SOLID LT)~~
~~STA. 323+14 - STA. 333+17 (DASHED RT)~~
~~STA. 333+17 - STA. 337+25 (DASHED LT)~~
~~STA. 333+17 - STA. 337+25 (SOLID RT)~~

~~621.60 ANCHOR FOR STEEL BEAM RAIL~~
~~60.00 STA. 321+53.50 RT~~
~~80.00 STA. 321+87.50 RT~~
~~STA. 321+97.00 RT~~
~~STA. 329+63.00 LT~~
~~65.00 STA. 329+80.00 LT~~
~~STA. 330+00.00 LT~~
~~STA. 330+16.00 LT~~
~~STA. 326+19.00 RT~~
~~STA. 326+77.50 RT~~

~~676.10 DELINEATOR WITH STEEL POST~~
~~STA. 321+66.00 RT~~
~~STA. 321+75.00 LT~~
~~STA. 321+87.50 RT~~
~~STA. 323+75.00 LT~~
~~STA. 326+30.00 RT~~
~~STA. 329+80.00 LT~~
~~STA. 330+00.00 LT~~
~~STA. 336+10.00 RT~~



~~616.35 TREATED TIMBER CURB~~
~~STA. 327+29-STA. 329+36 RT~~

~~675.50 REMOVING SIGNS~~
~~AS SHOWN - 3~~

~~675.60 ERECTING SALVAGED SIGNS~~
~~AS SHOWN - 2~~

LEGEND
 MAILBOX
 UTILITY POLE
 HYDRANT
 MANHOLE
 WATER VALVE
 CATCH BASIN / DROP INLET
 RAILROAD CROSSING SIGNAL

SIGN LEGEND
 R = REMOVE
 R&S = REMOVE AND SALVAGE
 RET = RETAIN
 S = SALVAGE
 N = NEW
 B-B = BACK TO BACK

NOT TO SCALE

PROJECT LAYOUT SHEET 4

PROJECT NAME: WORCESTER-ELMORE
 PROJECT NUMBER: STP 2209(I)S
 FILE NAME: 99cl70.dgn
 PROJECT LEADER: CDL
 DESIGNED BY: SJL
 PLOT FILE: 99cl70_I9.I
 PLOT DATE: 23-SEP-2011 5:24
 DRAWN BY: SJD
 CHECKED BY: EPD
 SHEET 19 OF 36