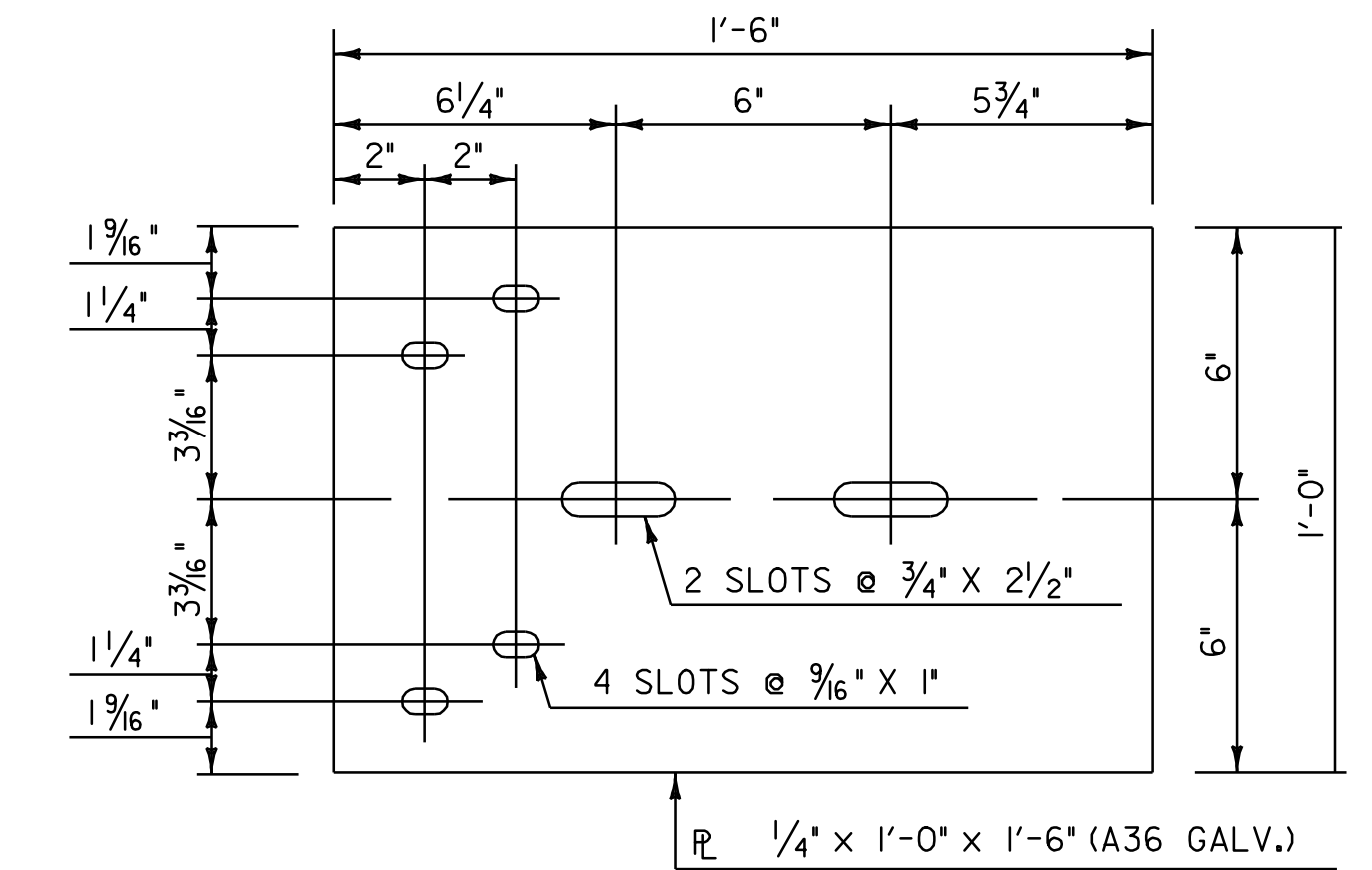
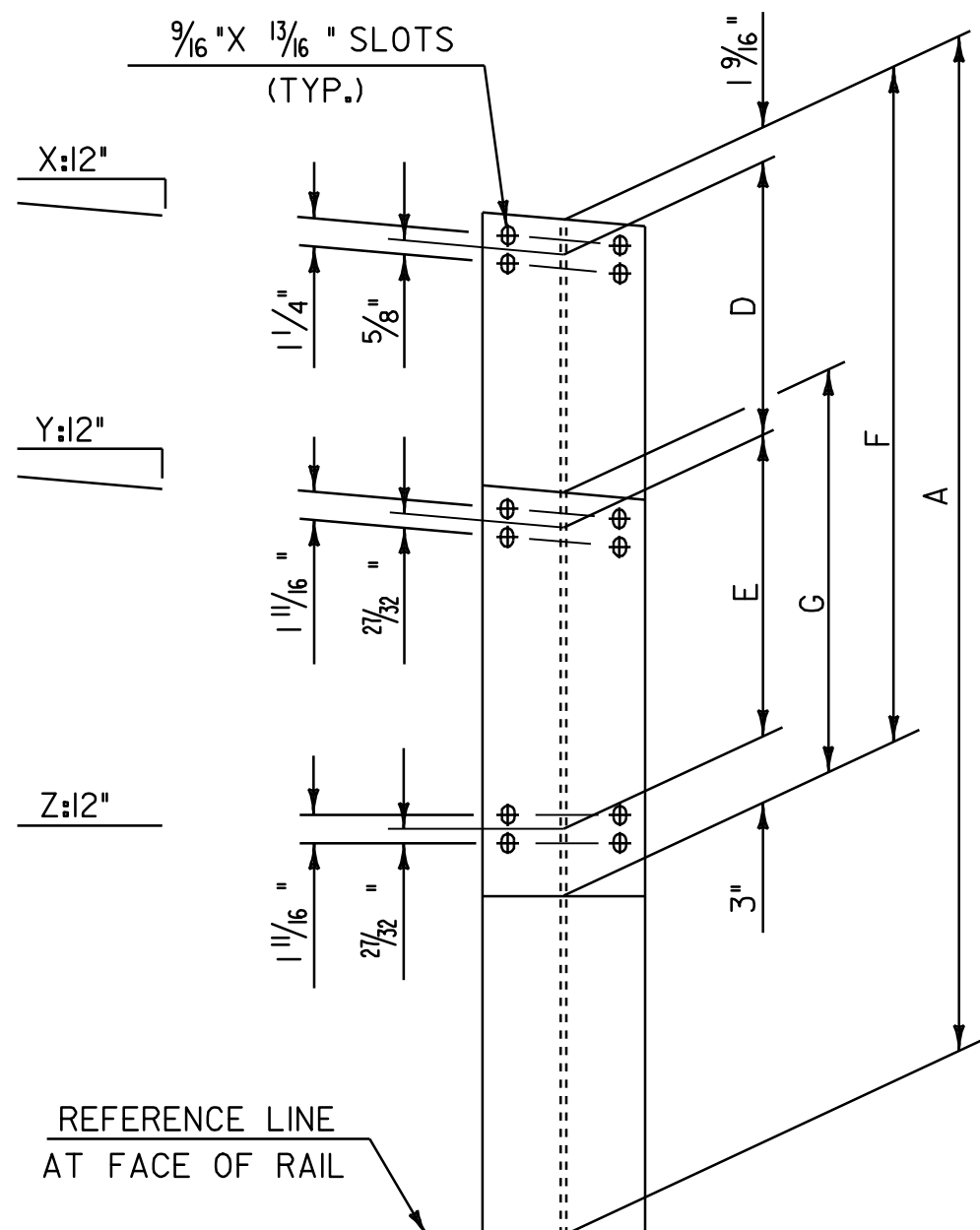
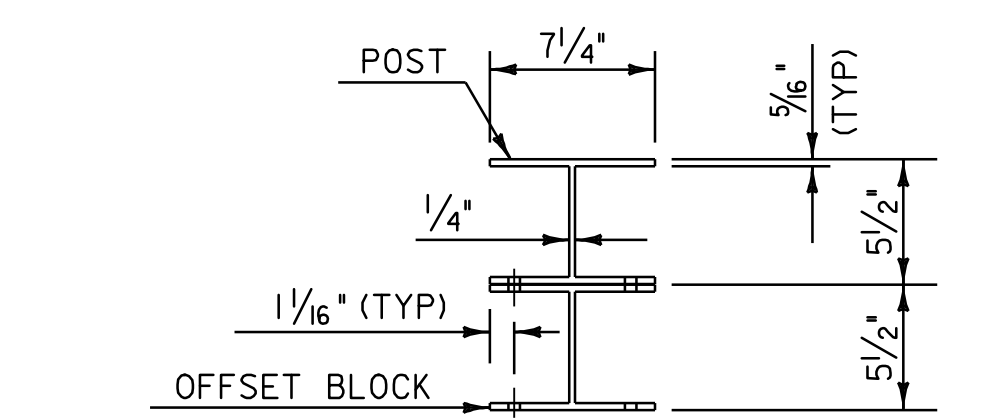


ELEVATION

- NOTES**
- POST 1 THROUGH 7 SHALL BE EXTRUDED ALUMINUM.
 - ALL STRUCTURAL STEEL SHALL BE ASTM A-36 GALVANIZED AFTER FABRICATION.
 - ALL ITEMS NOT OTHERWISE INDICATED SHALL MEET THE SPECIFICATION REQUIREMENTS OF THE STANDARD SHEETS ON WHICH THEY ARE DETAILED.
 - SEE STANDARD G-1 FOR STEEL BEAM GUARDRAIL DETAILS.
 - THE COST OF ALL MATERIALS AND LABOR FOR THE SPLICE BETWEEN THE ALUMINUM APPROACH RAILING AND THE STEEL BEAM GUARDRAIL SHALL BE SUBSIDIARY TO ITEM 621.74 ALUMINUM APPROACH RAILING.
 - DIMENSIONS SHOWN ARE FROM A REFERENCE LINE AT THE FACE OF POST FOR A NORMAL CROWNED SECTION. APPROPRIATE CORRECTIONS SHALL BE MADE FOR CROSS SLOPES OTHER THAN A NORMAL SECTION.
 - SEE SHEET 89 OF 95 FOR ALUMINUM APPROACH RAIL DIMENSIONS TABLE.

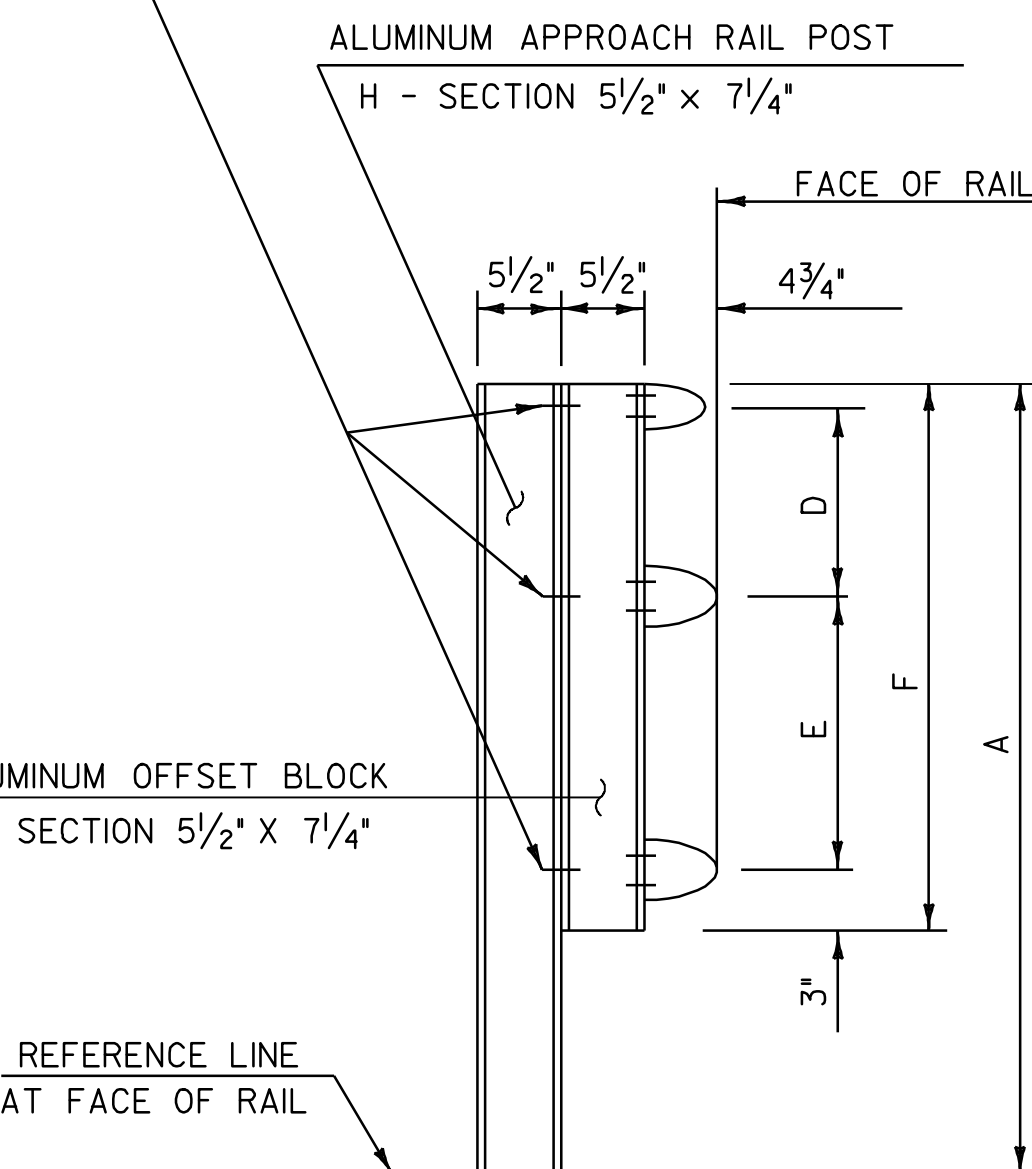


BACK-UP PLATE DETAIL

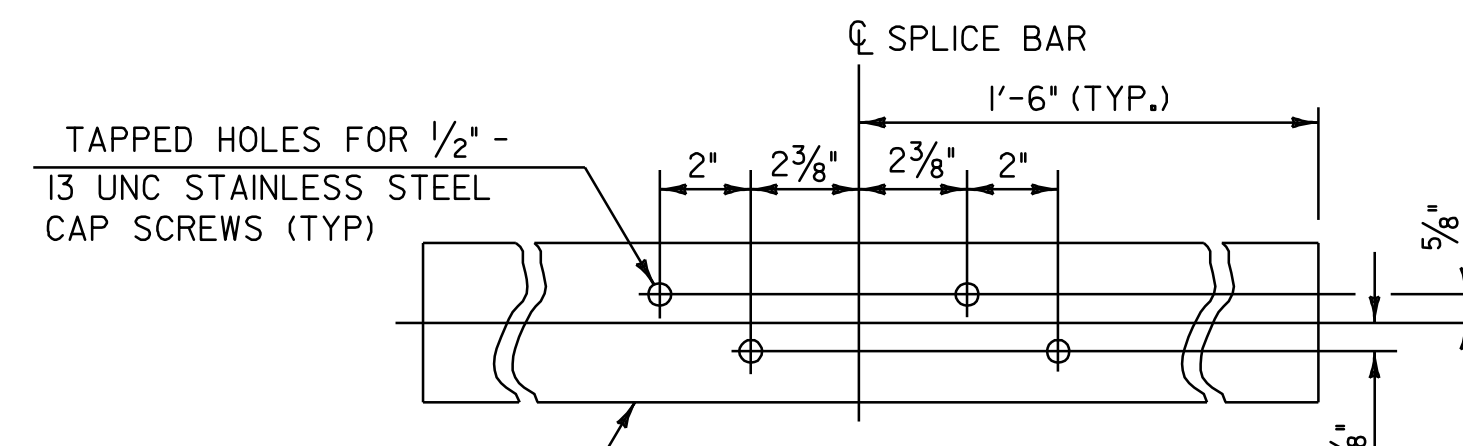


POST ELEVATION & SECTION
(SEE NOTE 7)

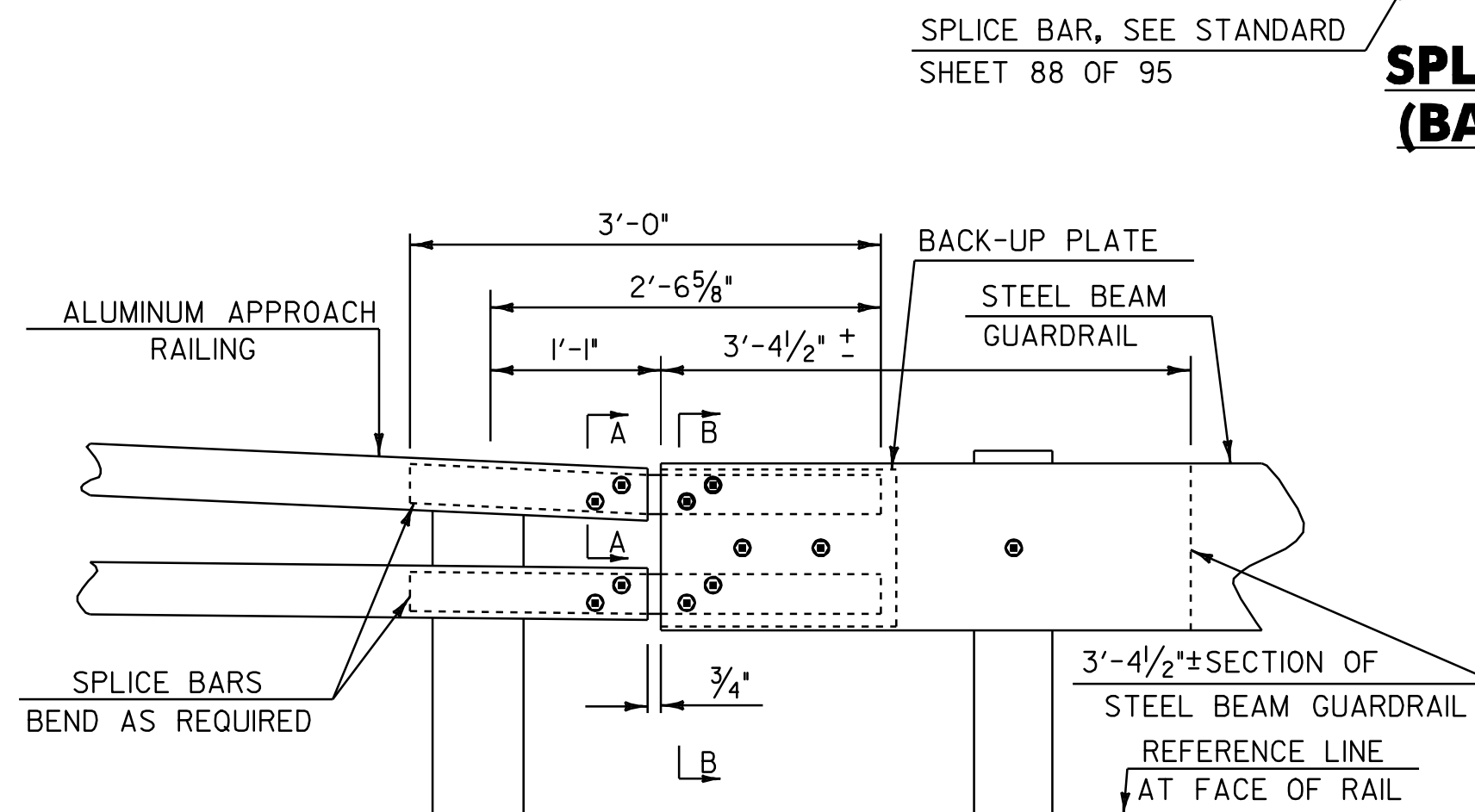
ATTACH OFFSET BLOCK TO POST WITH 1/2"-13 UNC x 1/4" LONG STAINLESS STEEL HEX HEAD BOLTS, NUTS AND WASHERS. 6 BOLTS PER POST, POST 1 THRU 4; 4 BOLTS PER POST, POST 5 THRU 7.



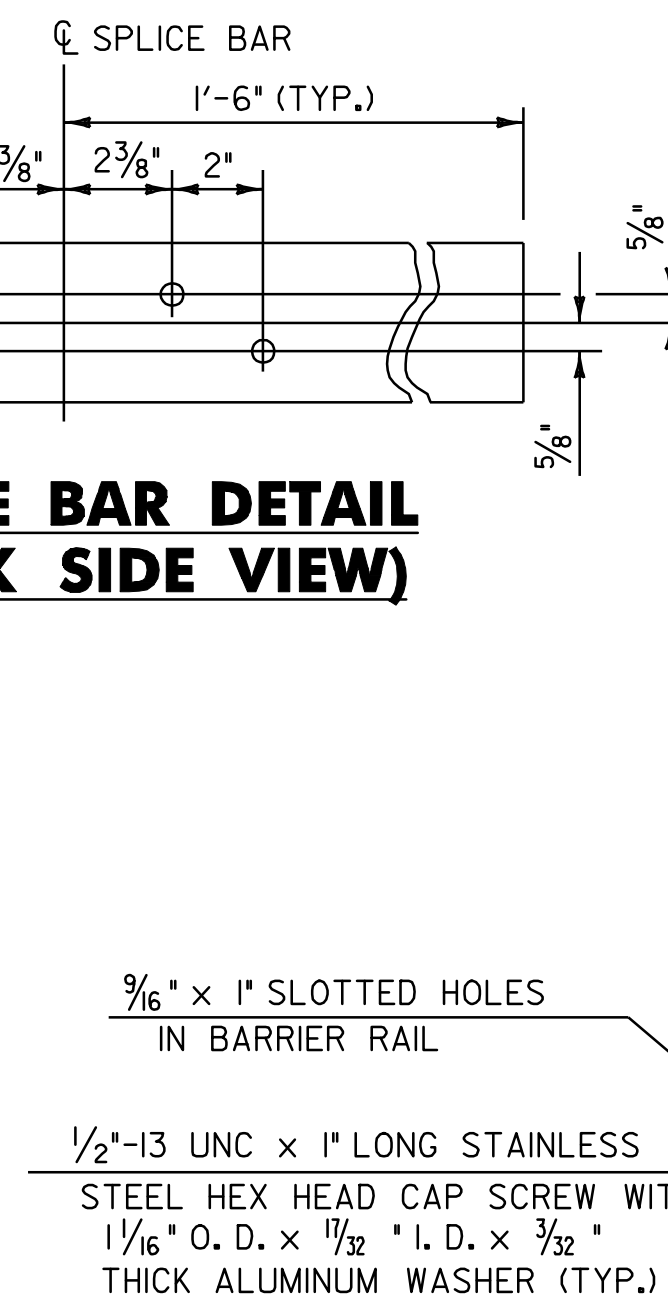
RAIL DETAIL
(SEE NOTE 7)



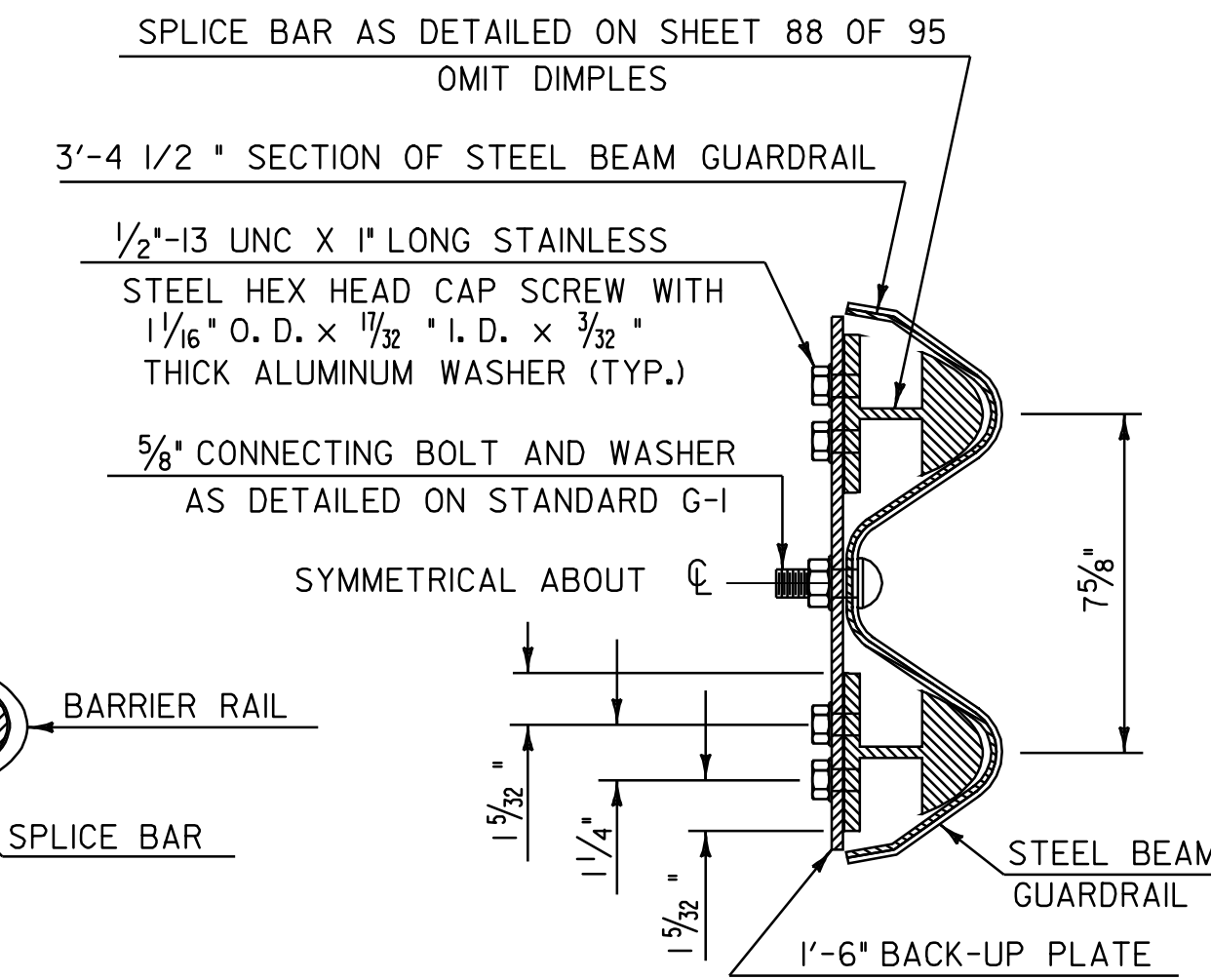
SPLICE BAR DETAIL (BACK SIDE VIEW)



SPLICE DETAIL



SECTION A - A



SECTION B - B

ALUMINUM APPROACH RAILING SHEET #1

PROJECT NAME: WALLINGFORD - RUTLAND TOWN
 PROJECT NUMBER: AC NH 2207(I)S
 FILE NAME: p99b166.dgn
 PROJECT LEADER: D.E.G.
 DESIGNED BY: D.W.E.
 PLOT DATE: 12-MAR-2007 11:34
 DRAWN BY: C.A.K.
 CHECKED BY: D.E.G.
 SHEET 87 OF 95