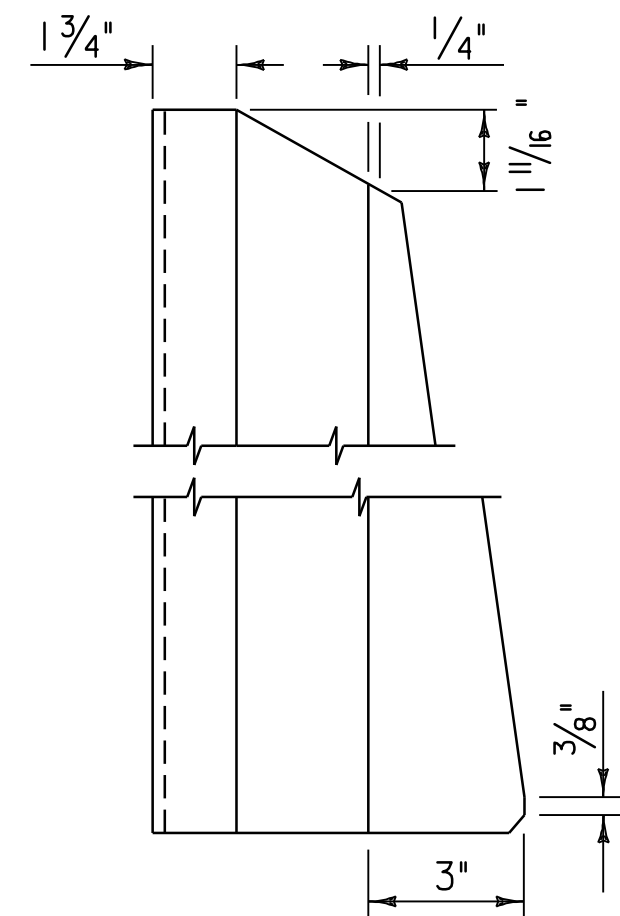
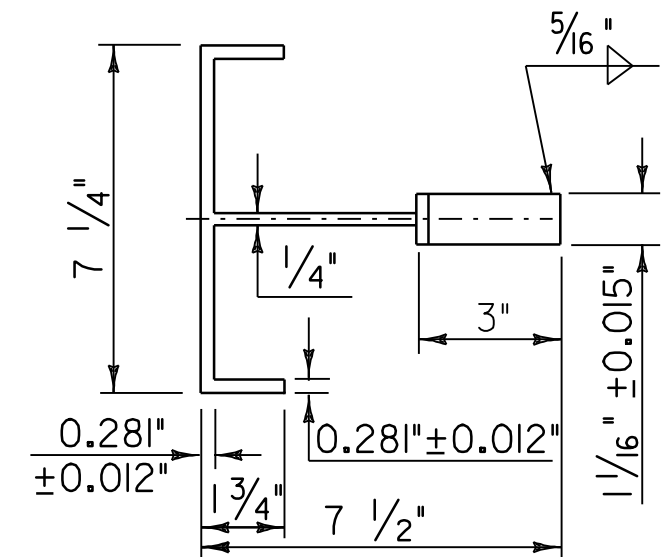


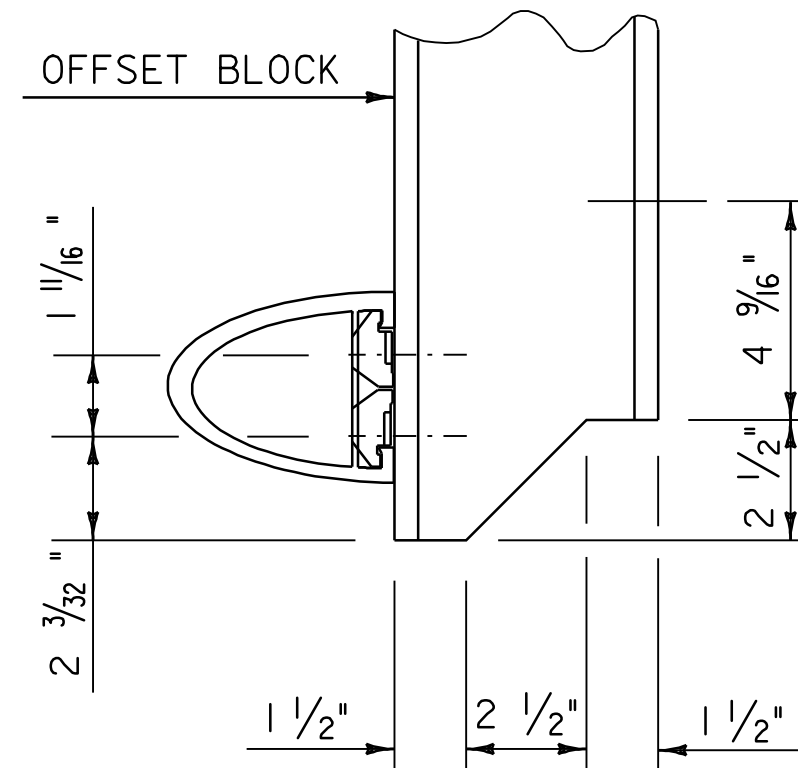
ALUMINUM BRIDGE RAIL QUANTITY SHEET				
STATION	POSITION	BRIDGE NUMBER	ITEM 525.10	ITEM 525.22
CLARENDON				
STA. 68+22.0 - STA. 68+59.0	LT	90N	37	37
STA. 68+22.0 - STA. 68+32.5	RT	90N	10'-6"	10'-6"
ROUNDING			2'-6"	2'-6"
TOTAL			50	50



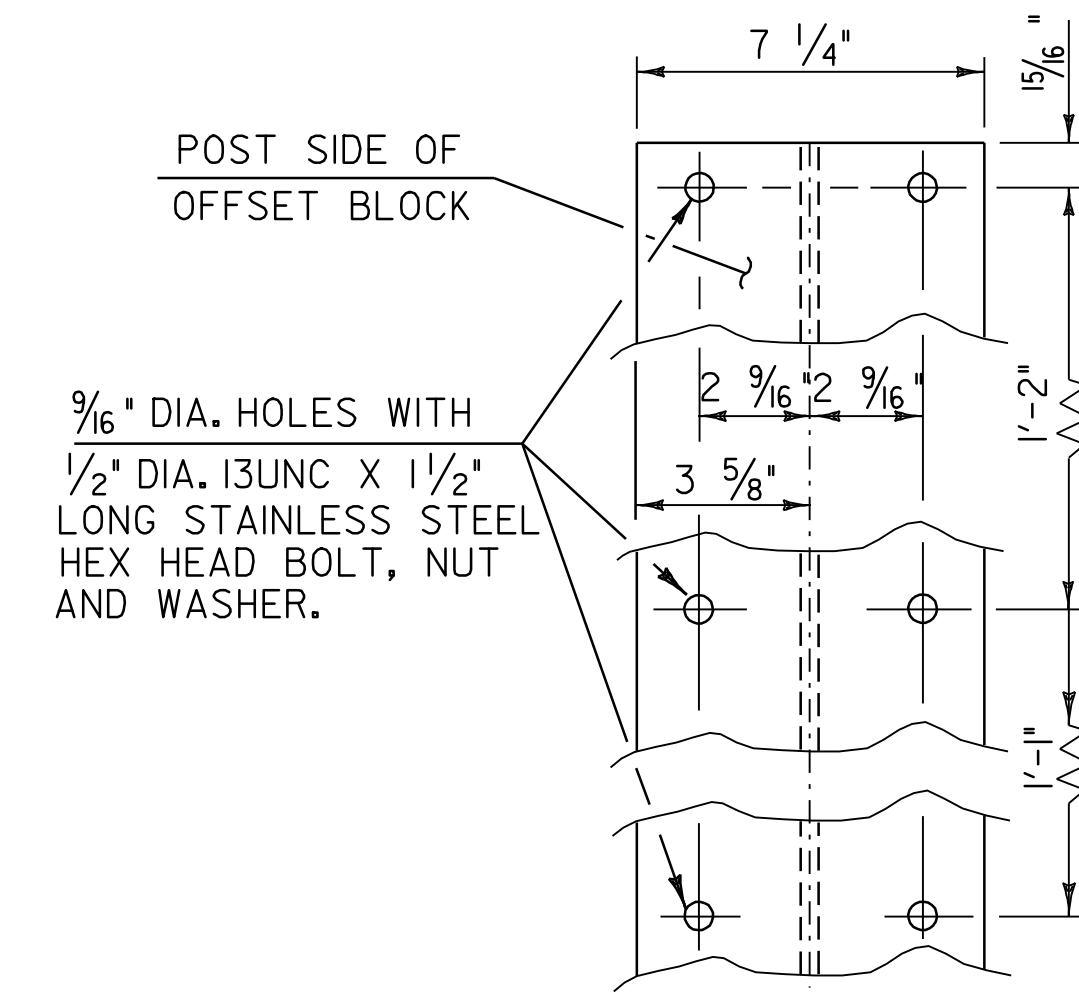
POST SIDE VIEW



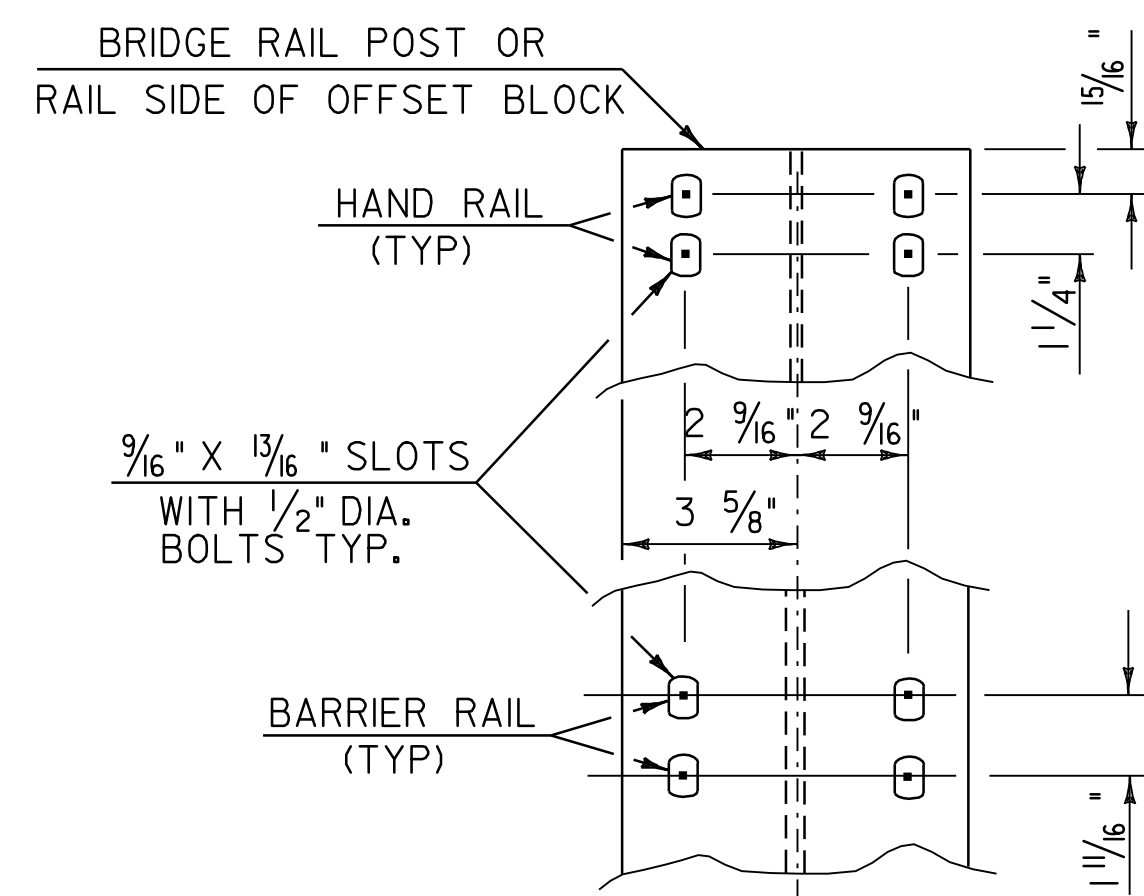
POST PLAN VIEW



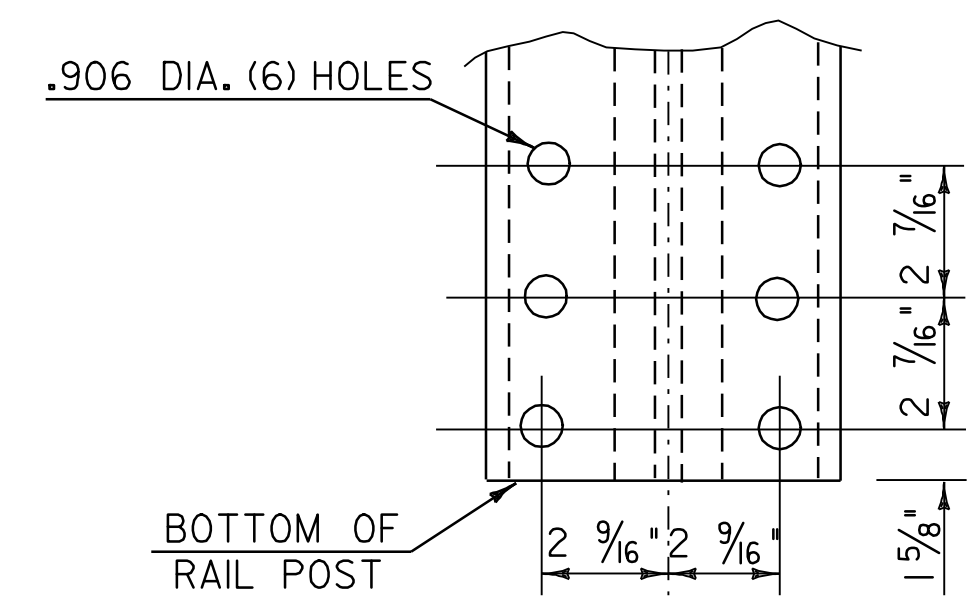
COPING DETAIL



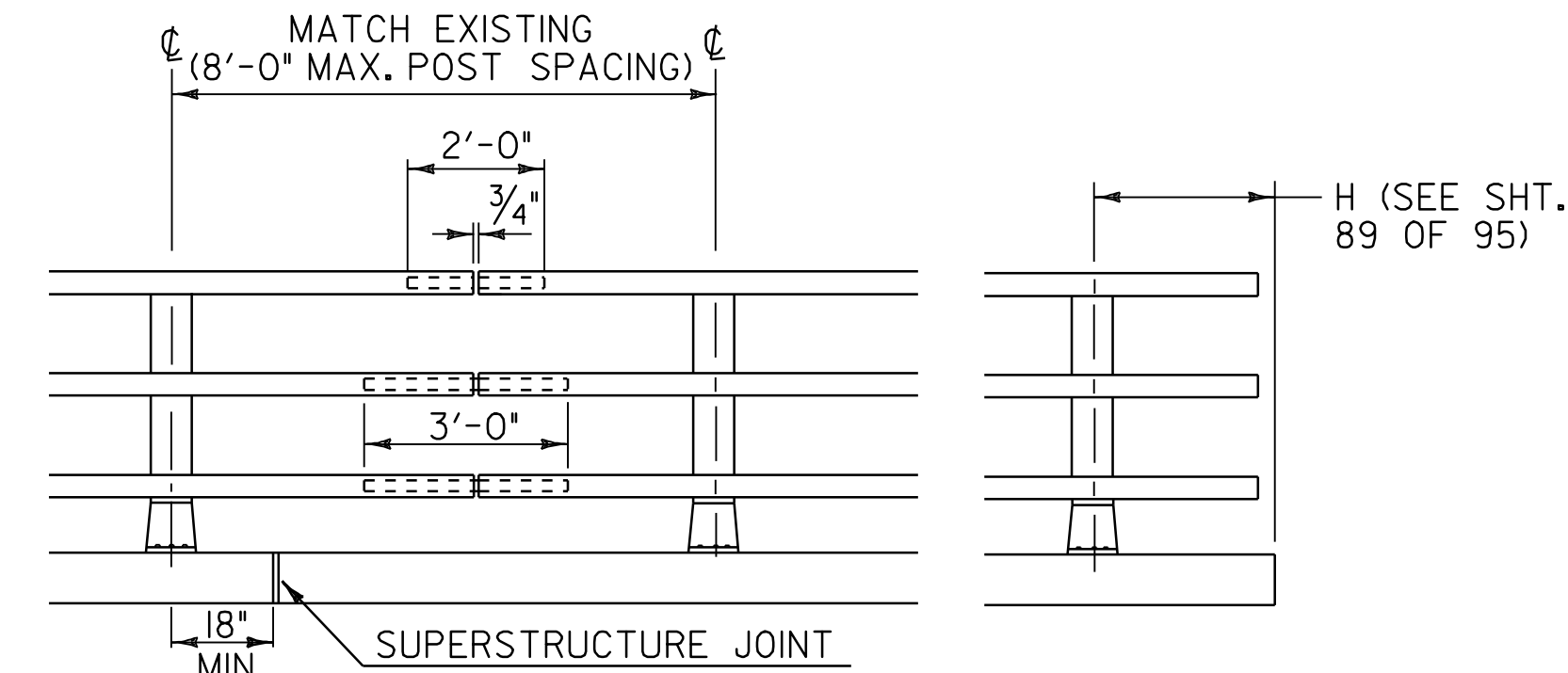
OFFSET BLOCK CONNECTION



RAIL CONNECTION

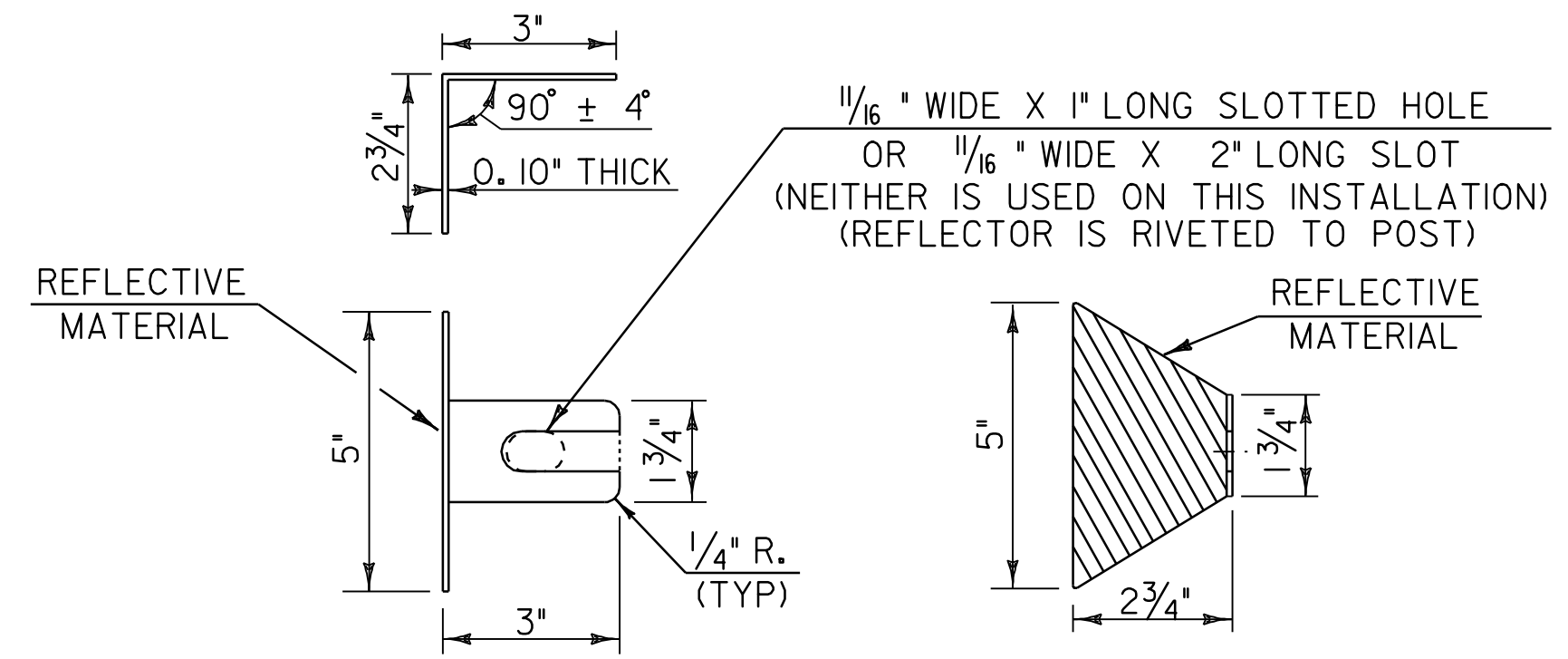


POST BASE BOLT HOLE DETAILS



FRONT ELEVATION

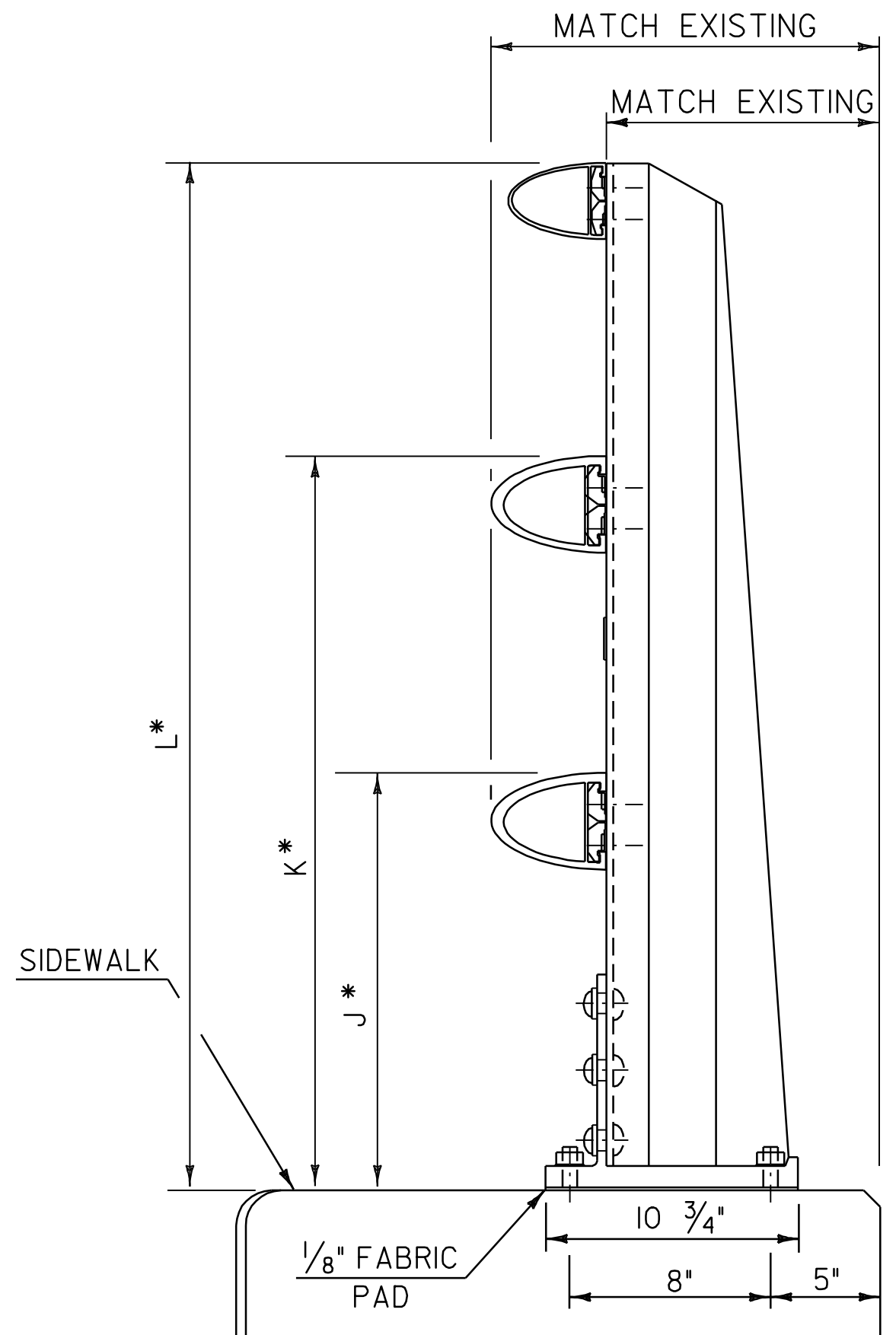
NOTE : RAIL POSTS ARE TO BE SET NORMAL TO GRADE UNLESS OTHERWISE DESIGNATED ON BRIDGE PLANS. ALL DIMENSIONS ARE TYPICAL UNLESS OTHERWISE DESIGNATED ON BRIDGE PLANS.



REFLECTOR DETAILS

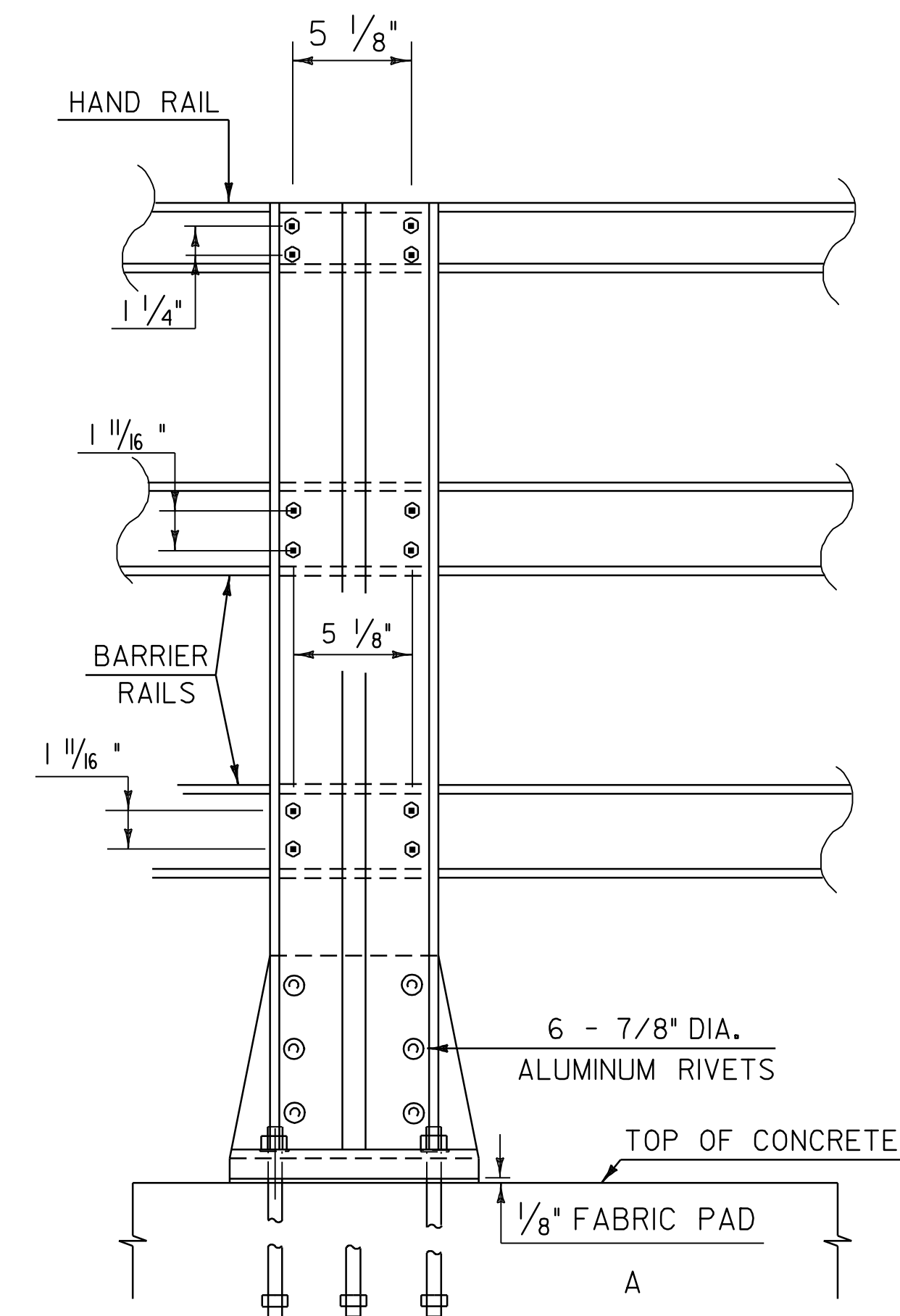
- NOTES:
1. REFLECTORIZED ALUMINUM DELINEATOR IS TO BE ERECTED EVERY 30 FEET (OR CLOSEST POST) WITH 2 NO. 8 X 3/4" SELF-TAPPING SCREWS.
 2. DELINEATORS SHALL MEET SPECIFICATION REQUIREMENTS FOR ASTM B209 ALLOY 5052-H32.
 3. REFLECTIVE MATERIAL SHALL MEET THE REQUIREMENTS OF SUBSECTION 750.08 AND SHALL BE OF ENCAPSULATED LENS SILVER OR AMBER. AMBER IS TO BE INSTALLED ON THE DRIVER'S LEFT AND SILVER ON THEIR RIGHT.
 4. PAYMENT SHALL BE SUBSIDIARY TO ALL OTHER ITEMS.

ALLOWABLE STRESSES:
 RAILING : 21,000 PSI TENSION
 22,000 PSI COMPRESSION
 POSTS : 17,000 PSI TENSION
 19,000 PSI COMPRESSION



SIDE ELEVATION OF THREE RAIL

*SEE SHEET 89 OF 95



OUTSIDE ELEVATION OF THREE RAIL POST

ALUMINUM BRIDGE RAIL DETAILS	PROJECT NAME: WALLINGFORD - RUTLAND TOWN	PLOT DATE: 12-MAR-2007 11:34
	PROJECT NUMBER: AC NH 2207(1)S	DRAWN BY: C.A.K.
	FILE NAME: p99bl66.dgn	CHECKED BY: D.E.G.
	PROJECT LEADER: D.E.G.	DESIGNED BY: D.W.E.
		SHEET 86 OF 95