

RUTLAND TOWN:
 STA. 35+66.00 - STA. 47+00.00 EDGE LINE LT & RT
 STA. 36+54.00 - STA. 38+90.00 SOLID LANE LINE LT
 STA. 36+54.00 - STA. 43+92.00 DASHED LANE LINE LT & RT
 STA. 38+90.00 - STA. 40+27.00 DOTTED LANE LINE LT
 STA. 40+46.00 - STA. 41+83.00 DOTTED LANE LINE RT
 STA. 41+83.00 - STA. 43+92.00 SOLID LANE LINE RT
 STA. 45+15.00 - STA. 46+05.00 SOLID LANE LINE LT
 STA. 45+15.00 - STA. 47+00.00 DASHED LANE LINE LT & RT

RUTLAND TOWN:
 STA. 35+66.00 - STA. 47+00.00 EDGE LINE LT & RT
 STA. 36+54.00 - STA. 38+90.00 SOLID LANE LINE LT
 STA. 36+54.00 - STA. 43+92.00 DASHED LANE LINE LT & RT
 STA. 38+90.00 - STA. 40+27.00 DOTTED LANE LINE LT
 STA. 40+46.00 - STA. 41+83.00 DOTTED LANE LINE RT
 STA. 41+83.00 - STA. 43+92.00 SOLID LANE LINE RT
 STA. 45+15.00 - STA. 46+05.00 SOLID LANE LINE LT
 STA. 45+15.00 - STA. 47+00.00 DASHED LANE LINE LT & RT

RUTLAND TOWN:
 STA. 33+70.2 RT, "O,N,L,Y" (4 EA)
 STA. 34+32.7 RT, ARROW (1 EA)
 STA. 34+41.3 LT, ARROW (1 EA)
 STA. 34+41.3 LT, ARROW (1 EA)
 STA. 34+95.2 RT, "O,N,L,Y" (4 EA)
 STA. 34+99.4 LT, "O,N,L,Y" (4 EA)
 STA. 35+57.7 RT, ARROW (1 EA)
 STA. 35+57.7 LT, ARROW (1 EA)
 STA. 36+11.52 RT, DIAMOND RUN MALL PLACE, ARROW (3 EA)
 STA. 36+11.52 RT, DIAMOND RUN MALL PLACE, "O,N,L,Y" (4 EA)
 STA. 36+11.52 LT, HOLIDAY INN, ARROW (3 EA)
 STA. 36+11.52 LT, HOLIDAY INN, "O,N,L,Y" (4 EA)
 STA. 36+62.3 RT, ARROW (1 EA)
 STA. 37+07.0 LT, "O,N,L,Y" (4 EA)
 STA. 37+51.7 LT, ARROW (1 EA)
 STA. 37+96.4 LT, "O,N,L,Y" (4 EA)
 STA. 38+41.4 LT, ARROW (1 EA)
 STA. 38+85.8 LT, "O,N,L,Y" (4 EA)
 STA. 41+87.2 RT, "O,N,L,Y" (4 EA)
 STA. 42+52.7 RT, ARROW (1 EA)
 STA. 43+18.2 RT, "O,N,L,Y" (1 EA)
 STA. 43+83.7 RT, ARROW (3 EA)
 STA. 44+56.32 LT, SHOPPING CENTER, ARROW (4 EA)
 STA. 44+56.32 LT, SHOPPING CENTER, "O,N,L,Y" (4 EA)
 STA. 45+23.3 LT, ARROW (2 EA)
 STA. 46+00.7 LT, ARROW (1 EA)
 STA. 46+82.7 LT, ARROW (1 EA)

RUTLAND TOWN:
 STA. 34+32.7 RT, ARROW (2 EA)
 STA. 34+41.3 LT, ARROW (2 EA)
 STA. 35+57.7 RT, ARROW (2 EA)
 STA. 35+57.7 LT, ARROW (2 EA)
 STA. 36+11.52 RT, DIAMOND RUN MALL PLACE, ARROW (6 EA)
 STA. 36+11.52 LT, HOLIDAY INN, ARROW (6 EA)
 STA. 36+62.3 LT, ARROW (2 EA)
 STA. 38+41.4 LT, ARROW (2 EA)
 STA. 42+52.7 RT, ARROW (2 EA)
 STA. 43+83.7 RT, ARROW (2 EA)
 STA. 44+56.32 LT, SHOPPING CENTER, ARROW (6 EA)
 STA. 45+23.3 LT, ARROW (4 EA)
 STA. 46+00.7 LT, ARROW (2 EA)

RUTLAND TOWN:
 STA. 44+02.00 LT/RT
 STA. 44+56.32 LT, SHOPPING CENTER
 STA. 44+56.32 RT, T-36

646.41 DURABLE 4" YELLOW LINE (MOD.) (RETROREFLECTIVITY/INLAID)
 RUTLAND TOWN:
 STA. 36+11.52 DOUBLE SOLID LT, HOLIDAY INN
 STA. 36+11.52 DOUBLE SOLID RT, DIAMOND RUN MALL PLACE
 STA. 44+56.32 RAISED MEDIAN LT, SHOPPING CENTER
 STA. 44+56.32 DOUBLE SOLID RT, T-36
 STA. 36+54.00 - STA. 38+90.00 DOUBLE SOLID C/L
 STA. 38+90.00 - STA. 41+83.00 DOUBLE SOLID HATCHED MEDIAN LT/RT
 STA. 41+83.00 - STA. 43+92.00 DOUBLE SOLID LT
 STA. 45+15.00 - STA. 47+00.00 DOUBLE SOLID C/L

646.61 TEMPORARY 4" YELLOW LINE (PAINT)
 RUTLAND TOWN:
 STA. 36+11.52 DOUBLE SOLID LT, HOLIDAY INN
 STA. 36+11.52 DOUBLE SOLID RT, DIAMOND RUN MALL PLACE
 STA. 44+56.32 RAISED MEDIAN LT, SHOPPING CENTER
 STA. 44+56.32 DOUBLE SOLID RT, T-36
 STA. 36+54.00 - STA. 38+90.00 DOUBLE SOLID C/L
 STA. 38+90.00 - STA. 41+83.00 DOUBLE SOLID HATCHED MEDIAN LT/RT
 STA. 41+83.00 - STA. 43+92.00 DOUBLE SOLID LT
 STA. 45+15.00 - STA. 47+00.00 DOUBLE SOLID C/L

646.414 DURABLE 6" WHITE LINE (MOD.) (RETROREFLECTIVITY/INLAID)
 RUTLAND TOWN:
 STA. 31+00.00 - STA. 35+66.00 EDGE LINE RT
 STA. 31+00.00 - STA. 35+66.00 DASHED LINE C/L
 STA. 31+66.00 - STA. 33+66.00 DOTTED LANE LINE RT
 STA. 32+36.00 - STA. 34+37.00 DOTTED LANE LINE LT
 STA. 33+66.00 - STA. 35+66.00 SOLID LANE LINE RT
 STA. 34+37.00 - STA. 35+66.00 SOLID LANE LINE LT

646.615 TEMPORARY 6" YELLOW LINE (PAINT)
 RUTLAND TOWN:
 STA. 31+00.00 - STA. 35+67.00 EDGE LINE, LT

646.43 DURABLE 8" YELLOW LINE (MOD.) (RETROREFLECTIVITY/INLAID)
 RUTLAND TOWN:
 STA. 38+90.00 - STA. 41+83.00 HATCHED MEDIAN C/L (416 FT)

646.46 DURABLE 24" STOP BAR (THERMOPLASTIC)
 RUTLAND TOWN:
 STA. 35+67.0 LT/RT
 STA. 36+11.52 RT, DIAMOND RUN MALL PLACE
 STA. 36+11.52 LT, HOLIDAY INN
 STA. 36+53.0 LT
 STA. 43+93.0 RT
 STA. 44+56.32 LT
 STA. 44+56.32 RT, T-36
 STA. 45+14.0 LT

646.66 TEMPORARY 24" STOP BAR (PAINT)
 RUTLAND TOWN:
 STA. 35+67.0 LT/RT
 STA. 36+11.52 RT, DIAMOND RUN MALL PLACE
 STA. 36+11.52 LT, HOLIDAY INN
 STA. 36+53.0 LT
 STA. 43+93.0 RT
 STA. 44+56.32 LT
 STA. 44+56.32 RT, T-36
 STA. 45+14.0 LT

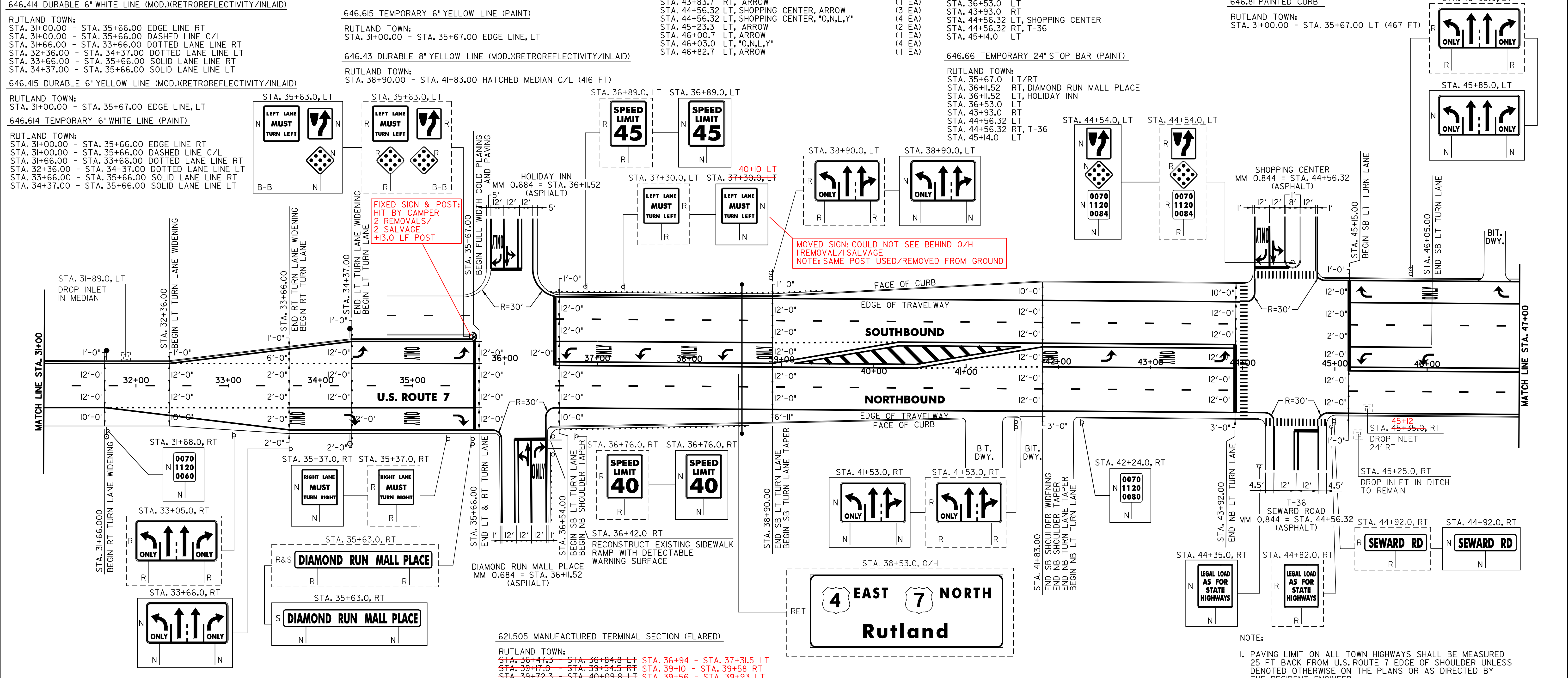
646.51 DURABLE CROSSWALK W/DIAGONAL LINES (MOD.)
 RUTLAND TOWN:
 STA. 44+02.00 LT/RT
 STA. 44+56.32 LT, SHOPPING CENTER
 STA. 44+56.32 RT, T-36

646.71 TEMPORARY CROSSWALK W/DIAGONAL LINES (MOD.)
 AS SHOWN - 18

646.75.50 REMOVING SIGNS
 AS SHOWN - 18

646.75.60 ERECTING SALVAGED SIGNS
 AS SHOWN - 1

646.81 PAINTED CURB
 RUTLAND TOWN:
 STA. 31+00.00 - STA. 35+67.00 LT (467 FT)



213.10 MILLED RUMBLE STRIPS
 RUTLAND:
 STA. 31+00 TO STA. 31+66 RT (66 FT)

604.412 REHABING DI, CB OR MH, CLASS 1
 RUTLAND TOWN:
 STA. 31+89.0 LT
 STA. 45+35.0 RT 45+12 RT

618.30 DETECTABLE WARNING SURFACE
 RUTLAND TOWN:
 STA. 36+42.0 RT (1.1 SY)

621.20 STEEL BEAM GUARDRAIL (GALVANIZED)
 RUTLAND TOWN:
 STA. 36+42.0 RT (1.1 SY)

621.60 ANCHOR FOR STEEL BEAM RAIL
 RUTLAND TOWN:
 STA. 36+42.0 RT

621.80 REMOVAL AND DISPOSAL OF GUARDRAIL
 RUTLAND TOWN:
 STA. 37+30.0 - STA. 39+67.0 LT (237 FT)
 STA. 36+42.0 - STA. 38+65.0 RT (214 FT)

621.505 MANUFACTURED TERMINAL SECTION (FLARED)
 RUTLAND TOWN:
 STA. 36+47.3 - STA. 36+84.8 LT STA. 36+94 - STA. 37+31.5 LT
 STA. 39+17.0 - STA. 39+54.5 RT STA. 39+10 - STA. 39+58 RT
 STA. 39+72.3 - STA. 40+09.8 LT STA. 39+56 - STA. 39+93 LT

676.10 DELINEATORS WITH STEEL POSTS
 RUTLAND:
 TYPE I WHITE
 STA. 31+68.0 RT
 STA. 34+32.0 RT

SIGN LEGEND
 R= REMOVE
 S= SALVAGE
 N= NEW
 RET= RETAIN
 B-B= BACK TO BACK
 EXISTING= - - - - -
 NEW= _____

PROJECT LAYOUT SHEET #25

PROJECT NAME: WALLINGFORD - RUTLAND TOWN
PROJECT NUMBER: AC NH 2207(1)S
FILE NAME: p99bl66.dgn
PROJECT LEADER: D.E.G.
DESIGNED BY: D.W.E.

PLOT DATE: 12-MAR-2007 11:30
DRAWN BY: C.A.K.
CHECKED BY: D.E.G.
SHEET 37 OF 95

NOTE:
 1. PAVING LIMIT ON ALL TOWN HIGHWAYS SHALL BE MEASURED 25 FT BACK FROM U.S. ROUTE 7 EDGE OF SHOULDER UNLESS DENOTED OTHERWISE ON THE PLANS OR AS DIRECTED BY THE RESIDENT ENGINEER.