

646.414 DURABLE 6" WHITE LINE (MOD.) (RETROREFLECTIVITY/INLAID)
 (ALL LINES WILL INCLUDE EDGE LINE BREAKS AND RADIUS FOR TOWN HIGHWAYS)
 CLARENDON:
 STA. 283+00.00 - STA. 298+00.00 DASHED LINE C/L
 STA. 283+00.00 - STA. 298+00.00 EDGE LINE RT
 STA. 288+34.00 - STA. 290+42.00 DOTTED LANE LINE LT
 STA. 290+42.00 - STA. 292+95.00 SOLID LANE LINE LT
 STA. 292+85.00 - STA. 294+70.00 DOTTED LANE LINE RT
 STA. 294+70.00 - STA. 297+75.00 SOLID LANE LINE RT

646.415 DURABLE 6" YELLOW LINE (MOD.) (RETROREFLECTIVITY/INLAID)
 (ALL LINES WILL INCLUDE C/L BREAKS FOR TOWN HIGHWAYS) S=SOLID, D=DASHED
 CLARENDON:
 STA. 283+00.00 - STA. 298+00.00 EDGE LINE LT

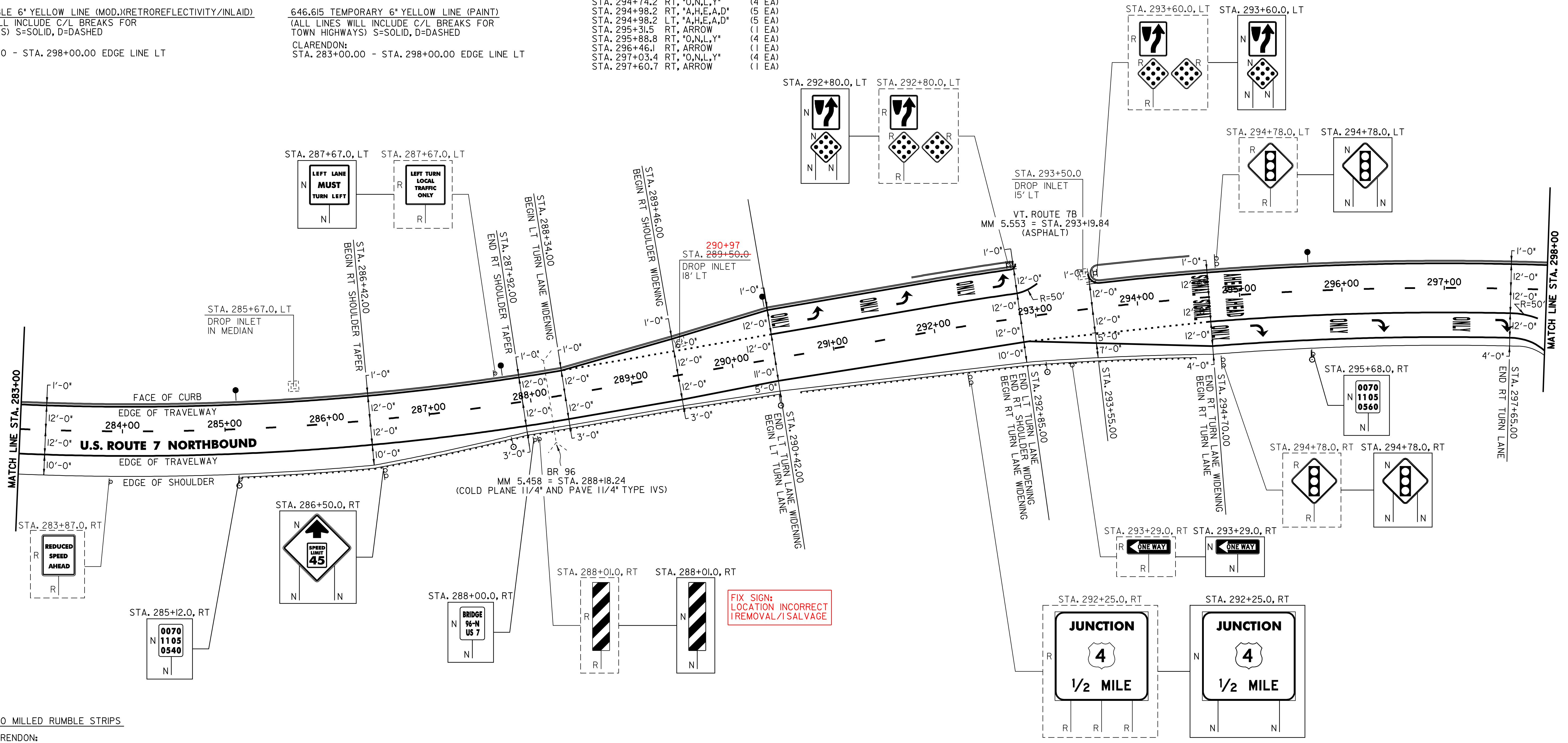
646.614 TEMPORARY 6" WHITE LINE (PAINT)
 (ALL LINES WILL INCLUDE EDGE LINE BREAKS AND RADIUS FOR TOWN HIGHWAYS)
 CLARENDON:
 STA. 283+00.00 - STA. 298+00.00 DASHED LINE C/L
 STA. 283+00.00 - STA. 298+00.00 EDGE LINE RT
 STA. 288+34.00 - STA. 290+42.00 DOTTED LANE LINE LT
 STA. 290+42.00 - STA. 292+95.00 SOLID LANE LINE LT
 STA. 292+85.00 - STA. 294+70.00 DOTTED LANE LINE RT
 STA. 294+70.00 - STA. 297+75.00 SOLID LANE LINE RT

646.615 TEMPORARY 6" YELLOW LINE (PAINT)
 (ALL LINES WILL INCLUDE C/L BREAKS FOR TOWN HIGHWAYS) S=SOLID, D=DASHED
 CLARENDON:
 STA. 283+00.00 - STA. 298+00.00 EDGE LINE LT

646.50 DURABLE LETTER OR SYMBOL (THERMOPLASTIC)
 CLARENDON:
 STA. 290+46.2 LT, "O,N,L,Y" (4 EA)
 STA. 290+93.1 LT, ARROW (1 EA)
 STA. 291+40.0 LT, "O,N,L,Y" (4 EA)
 STA. 291+86.9 LT, ARROW (1 EA)
 STA. 292+33.8 LT, "O,N,L,Y" (4 EA)
 STA. 292+80.7 LT, ARROW (1 EA)
 STA. 294+57.8 RT, "S,I,G,N,A,L" (6 EA)
 STA. 294+57.8 LT, "S,I,G,N,A,L" (6 EA)
 STA. 294+74.2 RT, "O,N,L,Y" (4 EA)
 STA. 294+98.2 RT, "A,H,E,A,D" (5 EA)
 STA. 294+98.2 LT, "A,H,E,A,D" (5 EA)
 STA. 295+31.5 RT, ARROW (1 EA)
 STA. 295+88.8 RT, "O,N,L,Y" (4 EA)
 STA. 296+46.1 RT, ARROW (1 EA)
 STA. 297+03.4 RT, "O,N,L,Y" (4 EA)
 STA. 297+60.7 RT, ARROW (1 EA)

646.50 TEMPORARY LETTER OR SYMBOL (PAINT)
 CLARENDON:
 STA. 290+93.1 LT, ARROW (2 EA)
 STA. 292+80.7 LT, ARROW (2 EA)
 STA. 294+57.8 RT, "S,I,G,N,A,L" (12 EA)
 STA. 294+57.8 LT, "S,I,G,N,A,L" (12 EA)
 STA. 294+98.2 RT, "A,H,E,A,D" (10 EA)
 STA. 294+98.2 LT, "A,H,E,A,D" (10 EA)
 STA. 295+31.5 RT, ARROW (2 EA)
 STA. 297+60.7 RT, ARROW (2 EA)

646.81 PAINTED CURB
 CLARENDON:
 STA. 283+00.00 - STA. 292+85.00 LT (985 FT)
 STA. 293+55.00 - STA. 298+00.00 LT (445 FT)
 675.50 REMOVING SIGNS
 AS SHOWN - 13



213.10 MILLED RUMBLE STRIPS

CLARENDON:
 STA. 283+00.0 - STA. 287+00.0 RT (400 FT)

604.412 REHABING DI, CB OR MH, CLASS I

CLARENDON:
 STA. 285+67.0 LT
 STA. 289+50.0 LT 290+97
 STA. 293+50.0 LT

621.20 STEEL BEAM GUARDRAIL (GALVANIZED)

CLARENDON:
 STA. 285+52.2 - STA. 287+64.7 RT (212.5 FT)
 STA. 289+73.3 - STA. 294+48.3 RT (475 FT)
 485

621.505 MANUFACTURED TERMINAL SECTION (FLARED)

CLARENDON:
 STA. 285+14.7 - STA. 285+52.2 RT

621.52 TRAILING END TERMINAL

CLARENDON:
 STA. 294+48.3 - STA. 294+62.5 RT

621.74 ALUMINUM APPROACH RAILING

CLARENDON:
 STA. 287+64.7 - STA. 287+92.0 RT
 STA. 289+46.0 - STA. 289+73.3 RT

621.80 REMOVAL AND DISPOSAL OF GUARDRAIL

CLARENDON:
 STA. 286+42.0 - STA. 287+92.0 RT (150 FT)
 STA. 289+46.0 - STA. 294+52.0 RT (506 FT)

676.10 DELINEATORS WITH STEEL POSTS

○ TYPE I WHITE ● TYPE I AMBER

CLARENDON:
 STA. 285+14.7 RT STA. 285+12.0 LT
 STA. 287+76.0 RT STA. 287+76.0 LT
 STA. 290+40.0 RT STA. 290+40.0 LT
 STA. 293+04.0 RT STA. 295+68.0 LT
 STA. 295+68.0 RT

SIGN LEGEND
 R= REMOVE
 S= SALVAGE
 N= NEW
 RET= RETAIN
 B-B= BACK TO BACK
 EXISTING= _____
 NEW= _____

NOTE:
 1. SEE SHEETS 87 TO 89 OF 95 FOR ALUMINUM APPROACH RAILING DETAILS. SEE SHEET 91 OF 95 FOR BR 96 DETAIL.

PROJECT LAYOUT SHEET #22	PROJECT NAME: WALLINGFORD - RUTLAND TOWN PROJECT NUMBER: AC NH 2207(1)S
	FILE NAME: p99bl66.dgn PROJECT LEADER: D.E.G. DESIGNED BY: D.W.E.
PLOT DATE: 12-MAR-2007 11:29 DRAWN BY: C.A.K. CHECKED BY: D.E.G. SHEET 34 OF 95	