

**646.414 DURABLE 6" WHITE LINE (MOD.) (RETROREFLECTIVITY/INLAID)**

(ALL LINES WILL INCLUDE EDGE LINE BREAKS AND RADIUS FOR TOWN HIGHWAYS)

- CLARENDON:  
 STA. 75+00.00 - STA. 91+00.00 DASHED LINE C/L  
 STA. 75+00.00 - STA. 91+00.00 EDGE LINE RT  
 STA. 75+00.00 - STA. 75+74.00 DOTTED LANE LINE RT  
 STA. 75+00.00 - STA. 76+27.00 SOLID LANE LINE LT  
 STA. 75+74.00 - STA. 76+48.00 SOLID LANE LINE RT

**646.415 DURABLE 6" YELLOW LINE (MOD.) (RETROREFLECTIVITY/INLAID)**

(ALL LINES WILL INCLUDE C/L BREAKS FOR TOWN HIGHWAYS) S=SOLID, D=DASHED

- CLARENDON:  
 STA. 75+00.00 - STA. 91+00.00 EDGE LINE LT  
 STA. 76+45.44 DOUBLE SOLID LT, CROSSOVER

**646.614 TEMPORARY 6" WHITE LINE (PAINT)**

(ALL LINES WILL INCLUDE EDGE LINE BREAKS AND RADIUS FOR TOWN HIGHWAYS)

- CLARENDON:  
 STA. 75+00.00 - STA. 91+00.00 DASHED LINE C/L  
 STA. 75+00.00 - STA. 91+00.00 EDGE LINE RT  
 STA. 75+00.00 - STA. 75+74.00 DOTTED LANE LINE RT  
 STA. 75+00.00 - STA. 76+27.00 SOLID LANE LINE LT  
 STA. 75+74.00 - STA. 76+48.00 SOLID LANE LINE RT

**646.615 TEMPORARY 6" YELLOW LINE (PAINT)**

(ALL LINES WILL INCLUDE C/L BREAKS FOR TOWN HIGHWAYS) S=SOLID, D=DASHED

- CLARENDON:  
 STA. 75+00.00 - STA. 91+00.00 EDGE LINE LT  
 STA. 76+45.44 DOUBLE SOLID LT, CROSSOVER

**646.40 DURABLE 4" WHITE LINE (MOD.) (RETROREFLECTIVITY/INLAID)**

- CLARENDON:  
 STA. 76+71.84 EDGE LINE RT, VT. ROUTE 7B

**646.41 DURABLE 4" YELLOW LINE (MOD.) (RETROREFLECTIVITY/INLAID)**

- CLARENDON:  
 STA. 76+71.84 DOUBLE SOLID RT, VT. ROUTE 7B

**646.46 DURABLE 24" STOP BAR (THERMOPLASTIC)**

- CLARENDON:  
 STA. 76+45.44 LT, CROSSOVER  
 STA. 76+45.44 LT, CROSSOVER  
 STA. 76+71.84 RT, VT. ROUTE 7B

**646.66 TEMPORARY 24" STOP BAR (PAINT)**

- CLARENDON:  
 STA. 76+45.44 LT, CROSSOVER  
 STA. 76+45.44 LT, CROSSOVER  
 STA. 76+71.84 RT, VT. ROUTE 7B

**646.60 TEMPORARY 4" WHITE LINE (PAINT)**

- CLARENDON:  
 STA. 76+71.84 EDGE LINE RT, VT. ROUTE 7B

**646.61 TEMPORARY 4" YELLOW LINE (PAINT)**

- CLARENDON:  
 STA. 76+71.84 DOUBLE SOLID RT, VT. ROUTE 7B

**646.50 DURABLE LETTER OR SYMBOL (THERMOPLASTIC)**

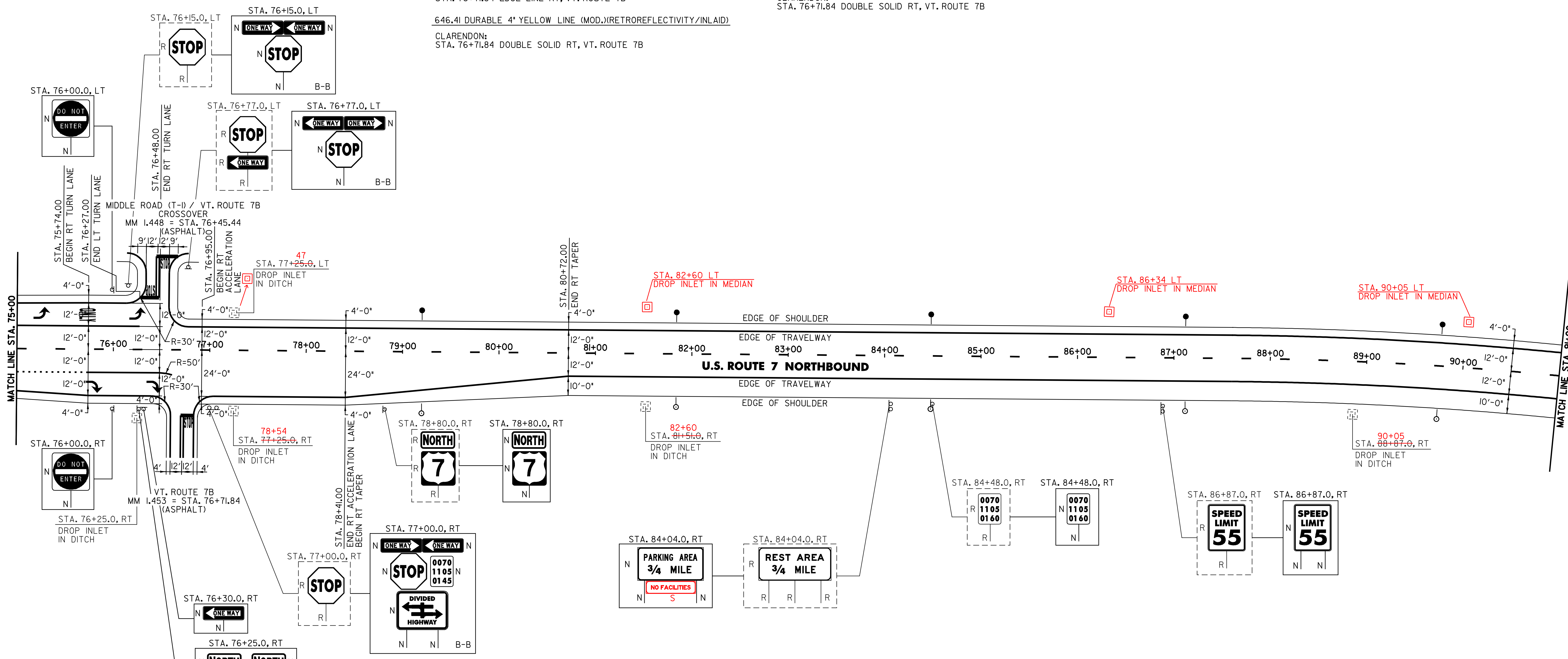
- CLARENDON:  
 STA. 75+23.3 LT, ARROW (1 EA)  
 STA. 75+73.0 LT, "O,N,L,Y" (4 EA)  
 STA. 75+78.3 RT, ARROW (1 EA)  
 STA. 76+22.7 LT, ARROW (1 EA)  
 STA. 76+43.8 RT, ARROW (1 EA)  
 STA. 76+45.44 LT, CROSSOVER, "S,T,O,P" (4 EA)  
 STA. 76+45.44 LT, CROSSOVER, "S,T,O,P" (4 EA)  
 STA. 76+71.84 RT, VT. ROUTE 7B, "S,T,O,P" (4 EA)

**646.70 TEMPORARY LETTER OR SYMBOL (PAINT)**

- CLARENDON:  
 STA. 75+78.3 RT, ARROW (2 EA)  
 STA. 76+22.7 LT, ARROW (2 EA)  
 STA. 76+43.8 RT, ARROW (2 EA)  
 STA. 76+45.44 LT, CROSSOVER, "S,T,O,P" (8 EA)  
 STA. 76+45.44 LT, CROSSOVER, "S,T,O,P" (8 EA)  
 STA. 76+71.84 RT, VT. ROUTE 7B, "S,T,O,P" (8 EA)

**675.50 REMOVING SIGNS**

AS SHOWN - 9



**213.10 MILLED RUMBLE STRIPS**

- CLARENDON:  
 STA. 77+26.0 TO STA. 91+00.0 LT (1374 FT)  
 STA. 80+72.0 TO STA. 91+00.0 RT (1028 FT)

**604.412 REHABING DI, CB OR MH, CLASS I**

- CLARENDON:  
 STA. 76+25.0 RT  
 STA. 77+25.0 LT  
 STA. 77+25.0 RT  
 STA. 81+51.0 RT  
 STA. 88+87.0 RT

**676.10 DELINEATORS WITH STEEL POSTS**

- TYPE I WHITE  
 CLARENDON:  
 STA. 79+20.0 RT  
 STA. 81+84.0 RT  
 STA. 84+48.0 RT  
 STA. 87+12.0 RT  
 STA. 89+76.0 RT
- TYPE I AMBER  
 CLARENDON:  
 STA. 79+20.0 LT  
 STA. 81+84.0 LT  
 STA. 84+48.0 LT  
 STA. 87+12.0 LT  
 STA. 89+76.0 LT

**201.31 THINNING AND TRIMMING**

- STA. 84+04.0 RT

**NOTE:**

1. PAVING LIMIT ON ALL TOWN HIGHWAYS SHALL BE MEASURED 25 FT BACK FROM U.S. ROUTE 7 EDGE OF SHOULDER UNLESS DENOTED OTHERWISE ON THE PLANS OR AS DIRECTED BY THE RESIDENT ENGINEER.

**SIGN LEGEND**

R=	REMOVE
S=	SALVAGE
N=	NEW
RET=	RETAIN
B-B=	BACK TO BACK
EXISTING=	-----
NEW=	-----

<b>PROJECT LAYOUT SHEET #9</b>	PROJECT NAME: WALLINGFORD - RUTLAND TOWN	PLOT DATE: 12-MAR-2007 11:28
	PROJECT NUMBER: AC NH 2207(1)S	DRAWN BY: C.A.K.
	FILE NAME: p99bl66.dgn	CHECKED BY: D.E.G.
	DESIGNED BY: D.W.E.	SHEET 21 OF 95