

646.414 DURABLE 6" WHITE LINE (MOD.) (RETROREFLECTIVITY/INLAID)  
 (ALL LINES WILL INCLUDE EDGE LINE BREAKS AND RADIUS FOR TOWN HIGHWAYS)  
 CLARENDON:  
 STA. 59+00.00 - STA. 75+00.00 EDGE LINE RT  
 STA. 59+00.00 - STA. 75+00.00 DASHED LINE C/L  
 STA. 59+00.00 - STA. 60+21.00 SOLID LANE LINE RT  
 STA. 71+47.00 - STA. 73+70.00 DOTTED LANE LINE LT  
 STA. 71+47.00 - STA. 75+00.00 DOTTED LANE LINE RT  
 STA. 73+70.00 - STA. 75+00.00 SOLID LANE LINE LT

646.415 DURABLE 6" YELLOW LINE (MOD.) (RETROREFLECTIVITY/INLAID)  
 (ALL LINES WILL INCLUDE C/L BREAKS FOR TOWN HIGHWAYS) S=SOLID, D=DASHED  
 CLARENDON:  
 STA. 59+00.00 - STA. 75+00.00 EDGE LINE LT  
 STA. 60+45.60 DOUBLE SOLID LT, T-26

646.614 TEMPORARY 6" WHITE LINE (PAINT)  
 (ALL LINES WILL INCLUDE EDGE LINE BREAKS AND RADIUS FOR TOWN HIGHWAYS)  
 CLARENDON:  
 STA. 59+00.00 - STA. 75+00.00 EDGE LINE RT  
 STA. 59+00.00 - STA. 75+00.00 DASHED LINE C/L  
 STA. 59+00.00 - STA. 60+21.00 SOLID LANE LINE RT  
 STA. 71+47.00 - STA. 73+70.00 DOTTED LANE LINE LT  
 STA. 71+47.00 - STA. 75+00.00 DOTTED LANE LINE RT  
 STA. 73+70.00 - STA. 75+00.00 SOLID LANE LINE LT

646.615 TEMPORARY 6" YELLOW LINE (PAINT)  
 (ALL LINES WILL INCLUDE C/L BREAKS FOR TOWN HIGHWAYS) S=SOLID, D=DASHED  
 CLARENDON:  
 STA. 59+00.00 - STA. 75+00.00 EDGE LINE LT  
 STA. 60+45.60 DOUBLE SOLID LT, T-26

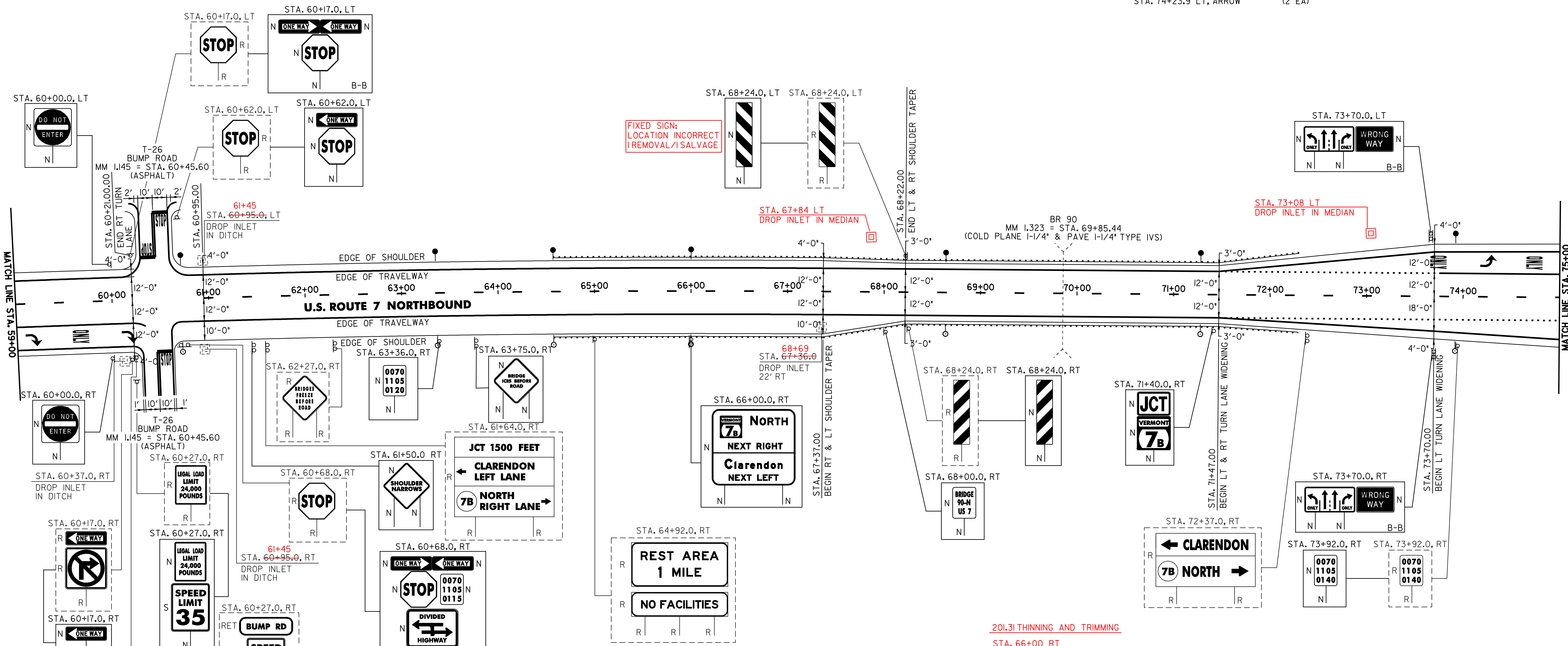
646.40 DURABLE 4" WHITE LINE (MOD.) (RETROREFLECTIVITY/INLAID)  
 CLARENDON:  
 STA. 60+45.60 EDGE LINE RT, T-26  
 646.60 TEMPORARY 4" WHITE LINE (PAINT)  
 CLARENDON:  
 STA. 60+45.60 EDGE LINE RT, T-26  
 646.41 DURABLE 4" YELLOW LINE (MOD.) (RETROREFLECTIVITY/INLAID)  
 CLARENDON:  
 STA. 60+45.60 DOUBLE SOLID RT, T-26  
 646.61 TEMPORARY 4" YELLOW LINE (PAINT)  
 CLARENDON:  
 STA. 60+45.60 DOUBLE SOLID RT, T-26

646.46 DURABLE 24" STOP BAR (THERMOPLASTIC)  
 CLARENDON:  
 STA. 60+45.60 LT, T-26  
 STA. 60+45.60 LT, T-26  
 STA. 60+45.60 RT, T-26  
 646.66 TEMPORARY 24" STOP BAR (PAINT)  
 CLARENDON:  
 STA. 60+45.60 LT, T-26  
 STA. 60+45.60 LT, T-26  
 STA. 60+45.60 RT, T-26

646.50 DURABLE LETTER OR SYMBOL (THERMOPLASTIC)  
 CLARENDON:  
 STA. 59+15.1 RT, ARROW (1 EA)  
 STA. 59+66.0 RT, "O,N,L,Y" (4 EA)  
 STA. 60+16.9 RT, ARROW (1 EA)  
 STA. 60+45.60 LT, T-26, "S,T,O,P" (4 EA)  
 STA. 60+45.60 LT, T-26, "S,T,O,P" (4 EA)  
 STA. 60+45.60 RT, T-26, "S,T,O,P" (4 EA)  
 STA. 73+74.2 LT, "O,N,L,Y" (4 EA)  
 STA. 74+23.9 LT, ARROW (1 EA)  
 STA. 74+73.6 LT, "O,N,L,Y" (4 EA)

646.50 REMOVING SIGNS  
 AS SHOWN - 15  
 675.60 ERECTING SALVAGED SIGNS  
 AS SHOWN - 1

646.70 TEMPORARY LETTER OR SYMBOL (PAINT)  
 CLARENDON:  
 STA. 59+15.1 RT, ARROW (2 EA)  
 STA. 60+16.9 RT, ARROW (2 EA)  
 STA. 60+45.0 LT, T-26, "S,T,O,P" (8 EA)  
 STA. 60+45.0 LT, T-26, "S,T,O,P" (8 EA)  
 STA. 60+45.0 RT, T-26, "S,T,O,P" (8 EA)  
 STA. 74+23.9 LT, ARROW (2 EA)



FIXED SIGN:  
 LOCATION INCORRECT  
 REMOVAL / SALVAGE

20I.31 THINNING AND TRIMMING  
 STA. 66+00 RT

NOTES:  
 1. SEE SHEETS 87 TO 89 OF 95 FOR ALUMINUM APPROACH RAILING DETAILS. SEE SHEET 90 OF 95 FOR BR 90 DETAIL.  
 2. PAVING LIMIT ON ALL TOWN HIGHWAYS SHALL BE MEASURED 25 FT BACK FROM U.S. ROUTE 7 EDGE OF SHOULDER UNLESS DENOTED OTHERWISE ON THE PLANS OR AS DIRECTED BY THE RESIDENT ENGINEER.

213.10 MILLED RUMBLE STRIPS

CLARENDON:  
 STA. 59+00 - STA. 59+73 LT (73 FT)  
 STA. 61+17 - STA. 71+47 LT (1030 FT)  
 STA. 61+16 - STA. 71+47 RT (1031 FT)

604.412 REHABING DI, CB OR MH, CLASS I

CLARENDON:  
 STA. 60+37.0 RT  
 STA. 60+95.0 LT  
 STA. 60+95.0 RT  
 STA. 67+36.0 RT

616.31 BITUMINOUS CONCRETE CURB, TYPE B

CLARENDON:  
 STA. 67+37.0 - STA. 68+22.0 RT (1.5 TONS)

621.20 STEEL BEAM GUARDRAIL (GALVANIZED)

CLARENDON:  
 STA. 64+94.8 - STA. 67+94.8 RT (300.0 FT)  
 STA. 64+94.8 - STA. 67+94.8 LT (300.0 FT)  
 STA. 71+74.3 - STA. 72+11.8 RT (37.5 FT)  
 STA. 71+74.3 - STA. 72+11.8 LT (37.5 FT)

621.505 MANUFACTURED TERMINAL SECTION (FLARED)

CLARENDON:  
 STA. 64+57.3 - STA. 64+94.8 LT  
 STA. 64+57.3 - STA. 64+94.8 RT

621.52 TRAILING END TERMINAL

CLARENDON:  
 STA. 72+11.8 - STA. 72+26.0 LT  
 STA. 72+11.8 - STA. 72+26.0 RT

621.74 ALUMINUM APPROACH RAILING

CLARENDON:  
 STA. 67+94.8 - STA. 68+22.0 LT  
 STA. 67+94.8 - STA. 68+22.0 RT  
 STA. 71+47.0 - STA. 71+74.3 LT  
 STA. 71+47.0 - STA. 71+74.3 RT

621.80 REMOVAL AND DISPOSAL OF GUARDRAIL

CLARENDON:  
 STA. 66+22.0 - STA. 68+22.0 RT (200.0 FT)  
 STA. 66+22.0 - STA. 68+22.0 LT (200.0 FT)  
 STA. 71+47.0 - STA. 72+22.0 LT (75.0 FT)  
 STA. 71+47.0 - STA. 72+22.0 RT (75.0 FT)

676.10 DELINEATORS WITH STEEL POSTS

TYPE I WHITE  
 CLARENDON:  
 STA. 60+72.0 RT  
 STA. 60+72.0 LT  
 STA. 63+36.0 RT  
 STA. 63+36.0 LT  
 STA. 64+57.3 RT  
 STA. 64+57.3 LT  
 STA. 66+00.0 RT  
 STA. 66+00.0 LT  
 STA. 68+64.0 RT  
 STA. 68+64.0 LT  
 STA. 71+28.0 RT  
 STA. 71+28.0 LT  
 STA. 73+92.0 RT  
 STA. 73+92.0 LT

SIGN LEGEND  
 R= REMOVE  
 S= SALVAGE  
 N= NEW  
 RET= RETAIN  
 B-B= BACK TO BACK  
 EXISTING= - - - - -  
 NEW= \_\_\_\_\_

**PROJECT LAYOUT SHEET #8**

PROJECT NAME: WALLINGFORD - RUTLAND TOWN  
 PROJECT NUMBER: AC NH 2207(I)S  
 FILE NAME: p99bl66.dgn  
 PROJECT LEADER: D.E.G.  
 DESIGNED BY: D.W.E.  
 PLOT DATE: 12-MAR-2007 11:28  
 DRAWN BY: C.A.K.  
 CHECKED BY: D.E.G.  
 SHEET 20 OF 95