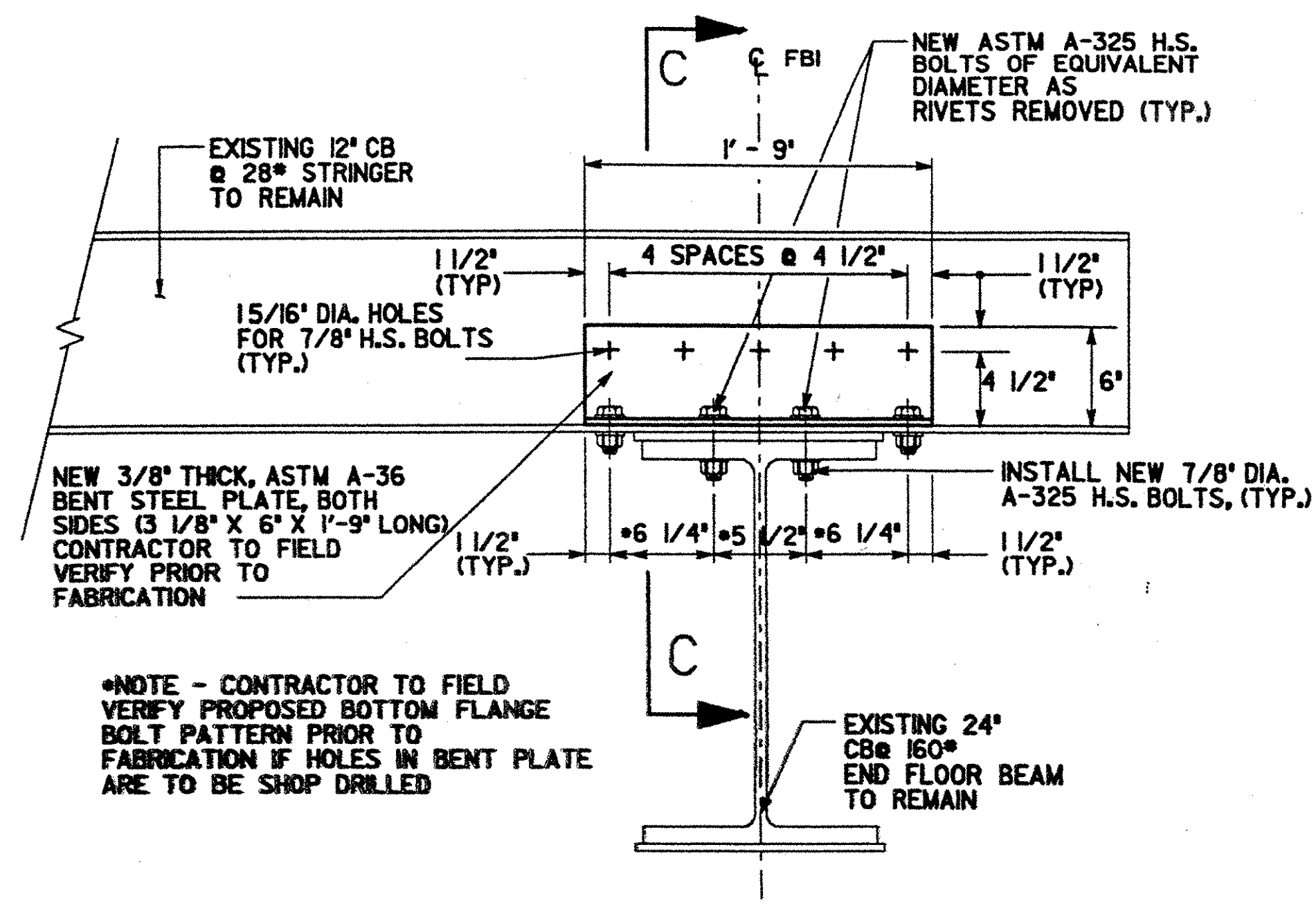
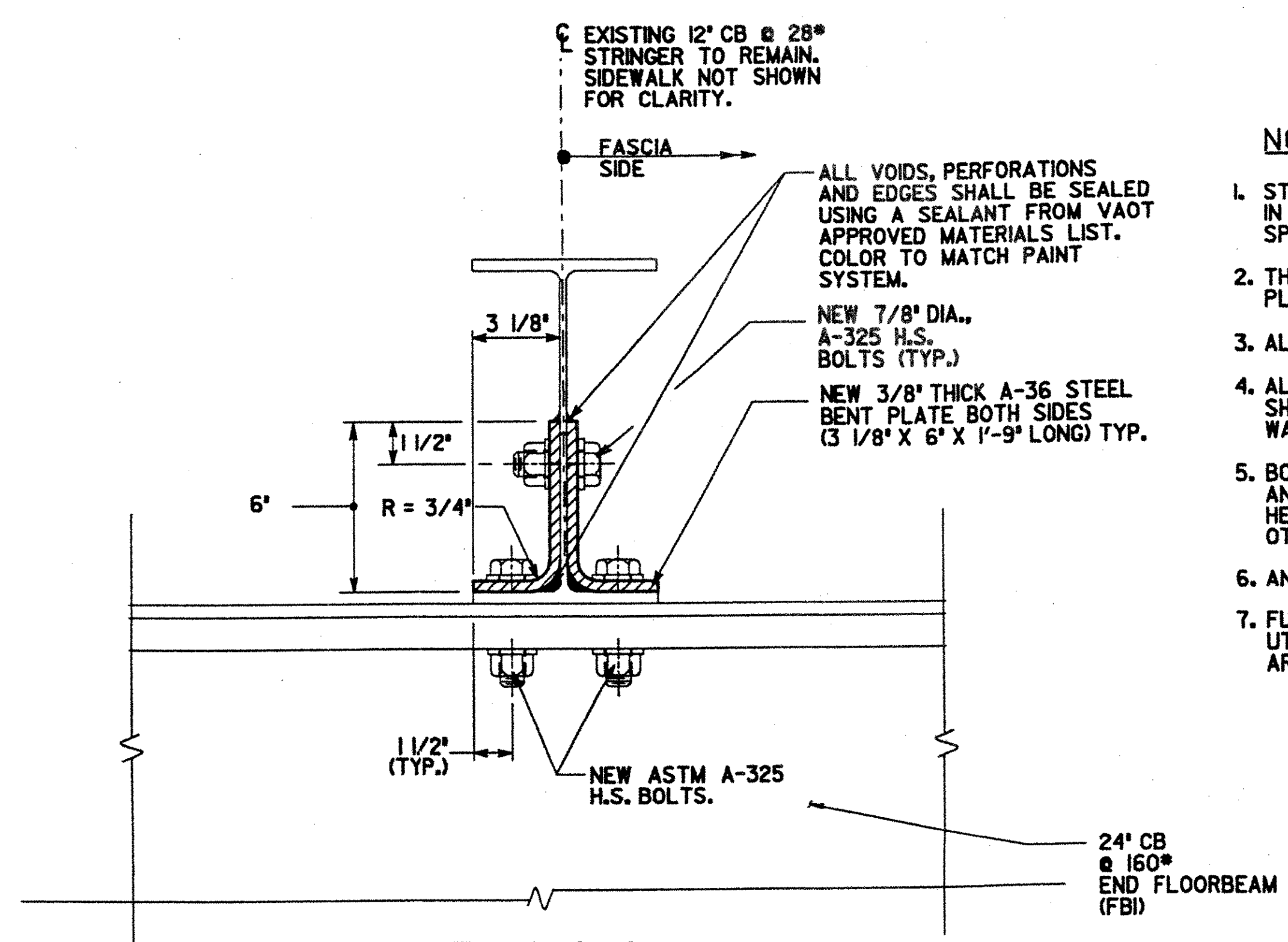


FIELD CHANGE SHEET

DESIGNED BY J. STEVENS
 DRAWN BY J. RIZZO
 CHECKED BY C. COLLEY
 J. SIMKULET
 11/3/00



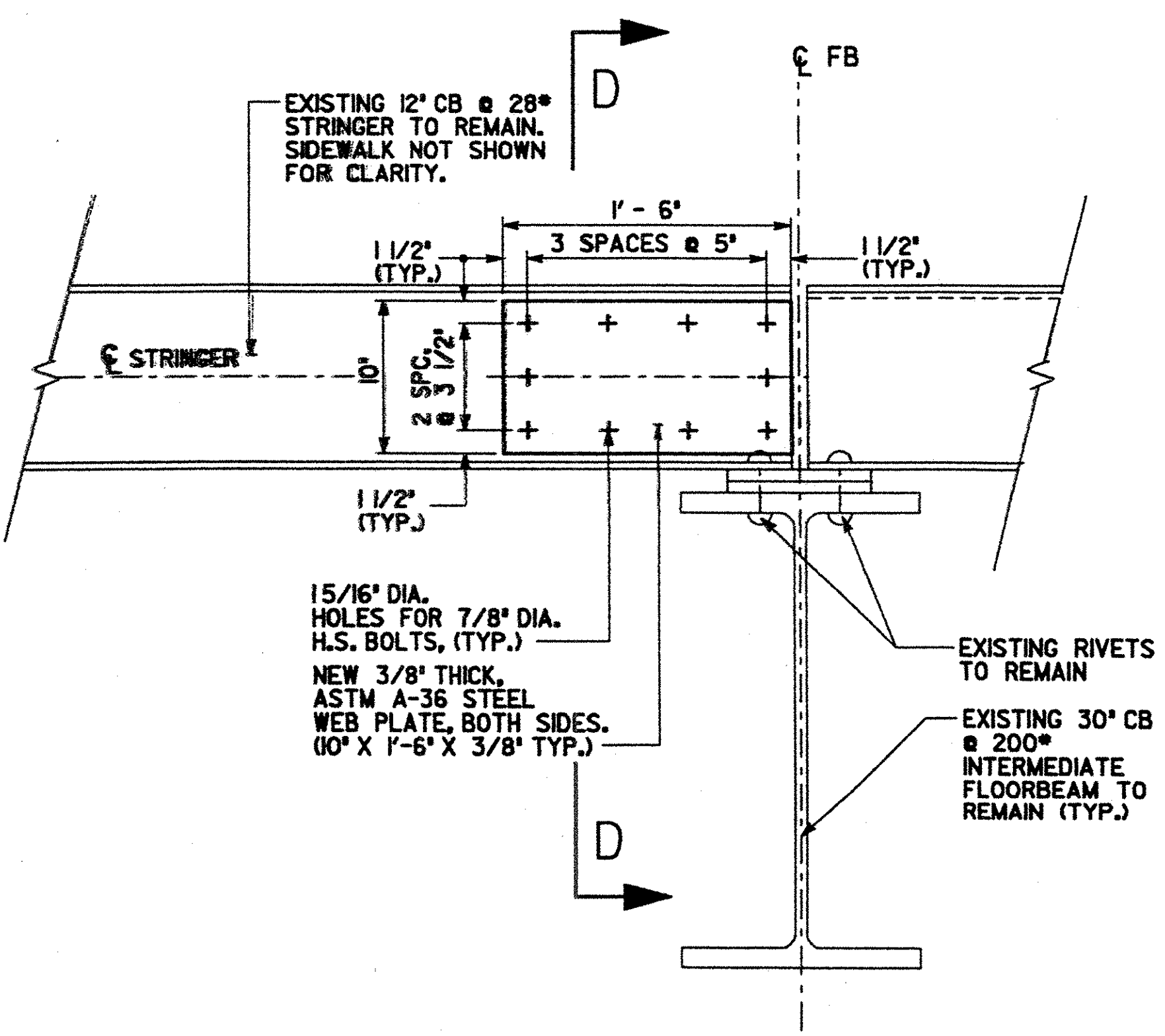
REPAIR DETAIL 1
(1 REQUIRED)
SCALE: 1 1/2" = 1'-0"



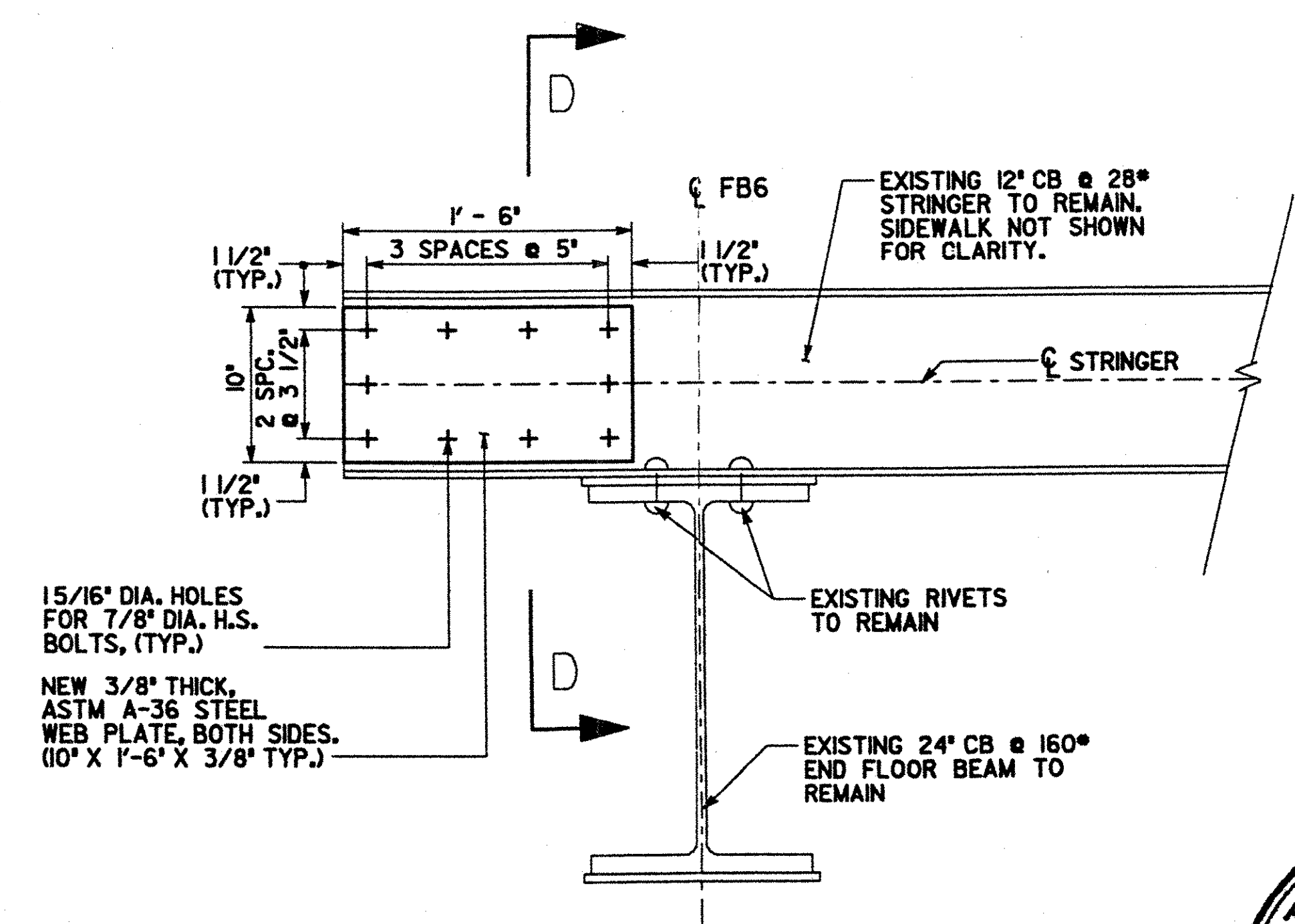
SECTION C-C
SCALE: 3" = 1'-0"

NOTES

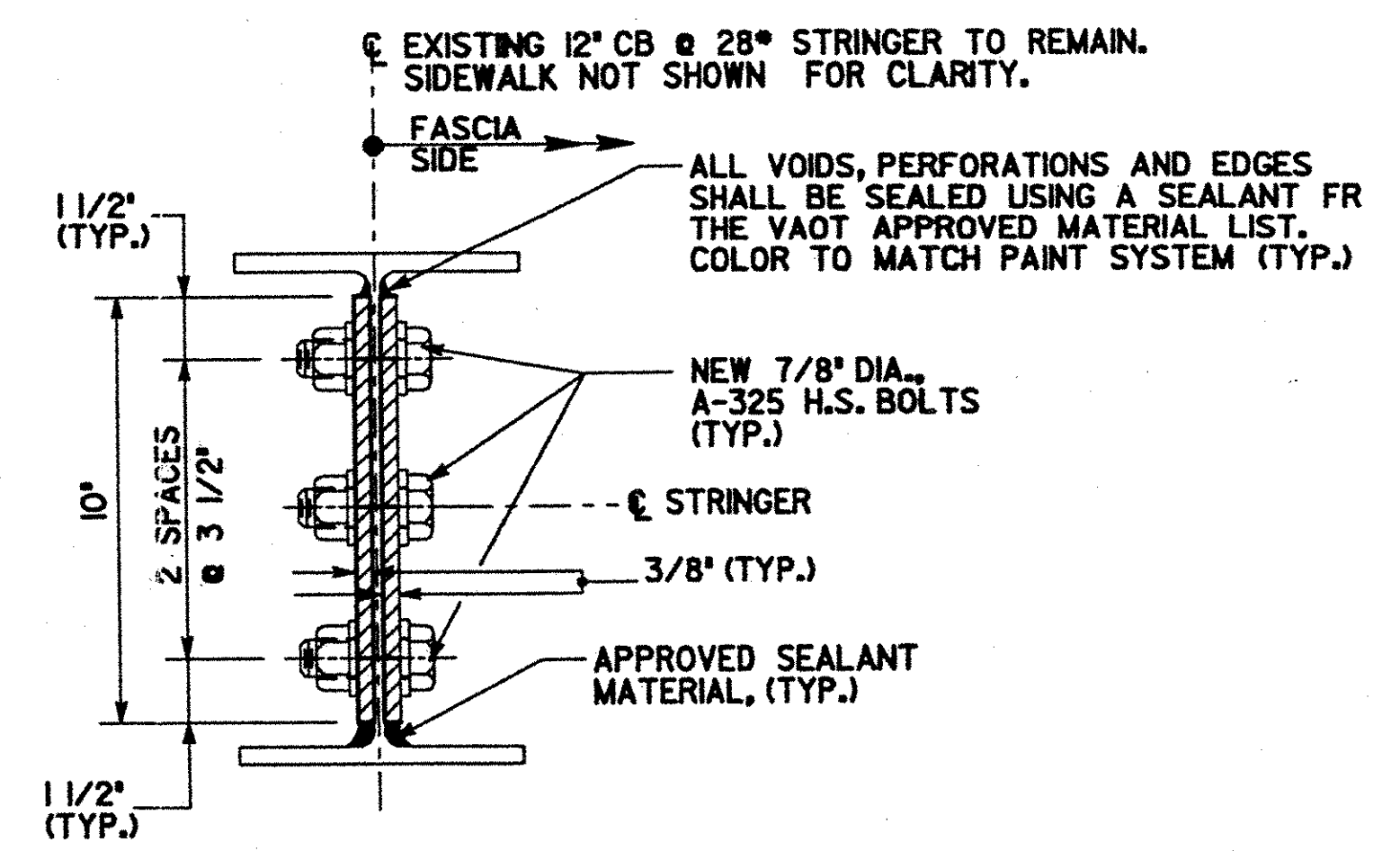
1. STRINGER WEB REPAIRS SHALL BE PERFORMED UNDER FORCE ACCOUNT IN ACCORDANCE WITH ARTICLE 109.06 OF THE VERMONT STANDARD SPECIFICATIONS.
2. THE CONTRACTOR SHALL FIELD VERIFY ALL DIMENSIONS OF PROPOSED REPAIR PLATES PRIOR TO FABRICATION.
3. ALL NEW REPAIR STEEL SHALL BE ASTM A-36 UNLESS OTHERWISE NOTED.
4. ALL FASTENERS SHALL BE NEW, 7/8" DIA., HS A-325 BOLTS. FASTENERS SHALL BE OF EQUIVALENT RIVET DIA. WHEN BEING PLACED IN EXISTING HOLES. WASHERS SHALL BE USED ON BOTH THE HEAD AND NUT SIDES OF THE FASTENER.
5. BOLTS INSTALLED WITH THE STEM VERTICAL SHALL HAVE THE HEADS UP AND THE BOLTS INSTALLED WITH THE STEM HORIZONTAL SHALL HAVE THE HEAD TOWARDS THE WEATHER UNLESS CLEARANCE RESTRICTIONS DICTATE OTHERWISE.
6. ANY WELDING OF REPAIR PLATES TO EXISTING STEEL IS PROHIBITED.
7. FULL SIZE BOLT HOLES IN NEW AND EXISTING STEEL MEMBERS CAN BE MADE UTILIZING ONE COMPONENT AS A TEMPLATE PROVIDING ALL THE FOLLOWING CRITERIA ARE MET:
 - A. ALL HOLES MUST BE DRILLED WITH HOUGEN OR JANCY BITS. TWIST DRILLS WILL NOT BE ALLOWED.
 - B. ALL COMPONENTS OF AN ASSEMBLY MUST BE DRILLED, MATCHED MARKED AND MATCHED DRILLED USING ONE COMPONENT AS A TEMPLATE.
 - 1.) WHEN MAKING HOLES IN THE FIELD, HOLES IN EXISTING STEEL MUST BE USED AS THE TEMPLATE FOR THE NEW STEEL.
 - 2.) WHEN MAKING NEW HOLES IN THE EXISTING STEEL, ONE COMPONENT OF THE MATCHED MARKED REPAIR ASSEMBLY MUST BE USED AS THE TEMPLATE.
8. ALL VOIDS AND PERFORATIONS IN EXISTING STEEL, INCLUDING THE EDGES OF THE REPAIR PLATES, SHALL BE SEALED USING A SEALANT FROM THE VAOT APPROVED LIST OF MATERIALS. COLOR TO MATCH PAINT SYSTEM.
9. ALL PAINT DAMAGED DURING THE STEEL REPAIRS SHALL BE REPAINTED UPON COMPLETION. ALL NEW STEEL REPAIR PLATES AND FASTENERS SHALL BE PAINTED IN ACCORDANCE WITH THE SPECIFICATIONS FOR ITEM 513.30
10. THE CONTRACTOR HAS THE OPTION TO UTILIZE GALVANIZE COATED FASTENERS AND PERFORM FIELD PAINTING. SHOP PAINTING OF STEEL REPAIR IS PERMITTED.
11. FOR STEEL REPAIR LOCATIONS SEE DWG. SR-2 SHEET 9FL.



REPAIR DETAIL 2
(4 REQUIRED)
SCALE: 1 1/2" = 1'-0"



REPAIR DETAIL 3
SCALE: 1 1/2" = 1'-0"



SECTION D-D
SCALE: 3" = 1'-0"



PROJECT NO. THI-9914		BHF 1000 (17)S	
Greenman-Pedersen CONSULTING ENGINEERS		BENNINGTON BRIDGE #10 (U.S. ROUTE 7) OVER THE WALLOOMSAC RIVER	
GPI		STEEL REPAIR DETAILS	
55 Monument Ave. Bennington, VT. 05201		DRAWING NO. SR-3	SHEET NO. 7F1 OF 20
DATE NOV., 2000		SCALE AS SHOWN	