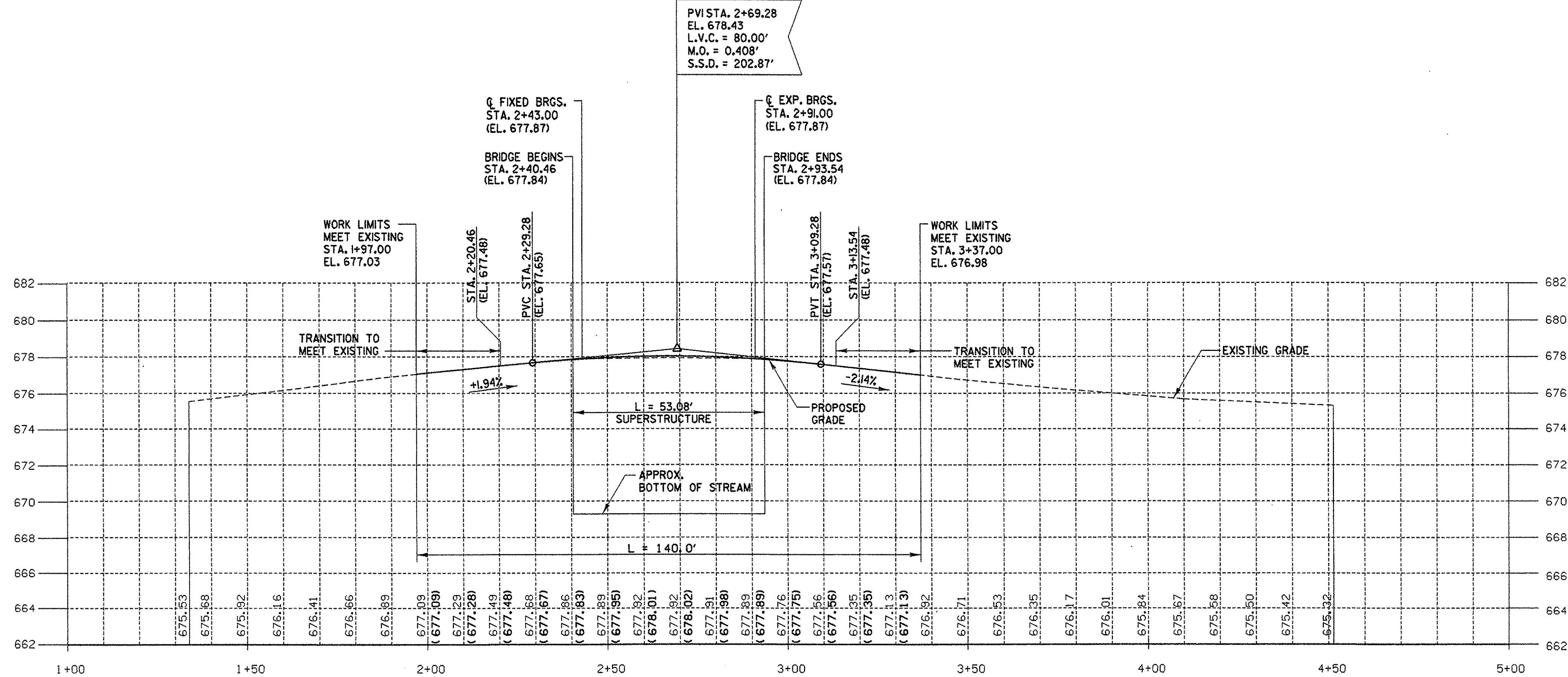


IN CHARGE OF J. STEVENS  
 DESIGNED BY J. RIZZO  
 DRAFTED BY K. COLE  
 CHECKED BY B. FARMST  
 d:\1999\99008\vw\pr\lban



**NOTES**

1) ALL HORIZONTAL COORDINATES ARE BASED ON NAD 83(1992) AND ELEVATIONS ARE NAVD 88 FROM BENCHMARKS B95004 AND B95005. THE HORIZONTAL COORDINATES OF THESE BENCHMARKS WAS ESTABLISHED FROM GPS OBSERVATIONS AND ADJUSTED BY THE VERMONT GEODETIC SURVEY.

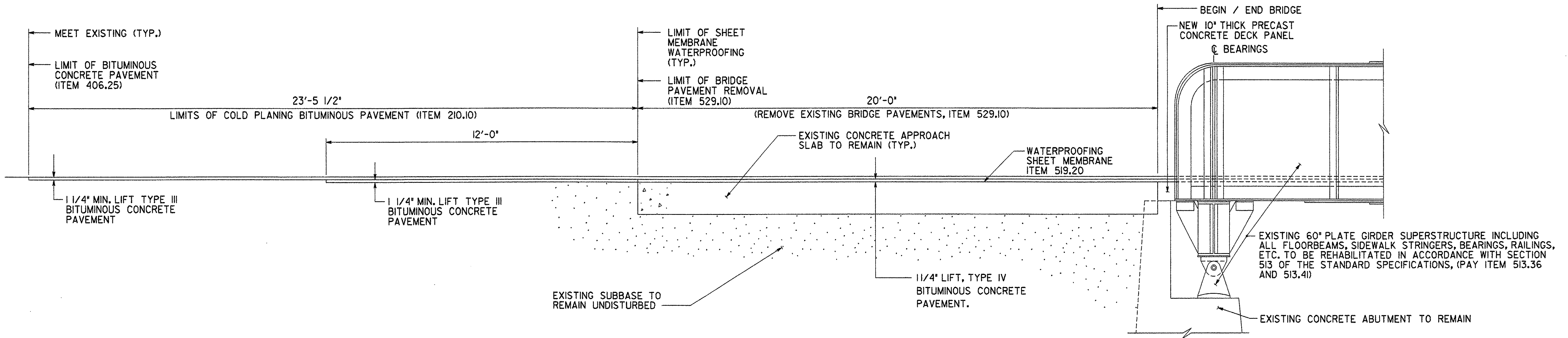
BM \* B95004: VT GEODETIC GPS N = 142604.912 (FT)  
 NAVD 83(1992) E = 1454662.588 (FT)  
 NAVD 88 EL = 675.41 (FT)

BM \* B95005: VT GEODETIC GPS N = 141126.688 (FT)  
 NAVD 83(1992) E = 1454564.049 (FT)  
 NAVD 88 EL = 682.71 (FT)

**LEGEND**

STA. XX+XX.XX  
 EL. XXXX.XX EXISTING  
 STA. XX+XX.XX  
 (EL. XXXX.XX) PROPOSED

NOTE: ALL ELEVATIONS ARE GIVEN ALONG T.G.L.



**TRANSITION TO MEET EXISTING**  
 SCALE: 1/2" = 1'-0"

PROJECT NO. THI-9914 BHF 1000 (17)S

Greenman-Podorsen CONSULTING ENGINEERS

**GPI**

55 Monument Ave. Bennington, VT. 05201

BENNINGTON BRIDGE #10 (U.S. ROUTE 7) OVER THE WALLOOMSAC RIVER

**PROFILE**

DRAWING NO. PR-1	SCALE: AS SHOWN	DATE: DEC ., 1999	SHEET NO. 6 OF 20
------------------	-----------------	-------------------	-------------------