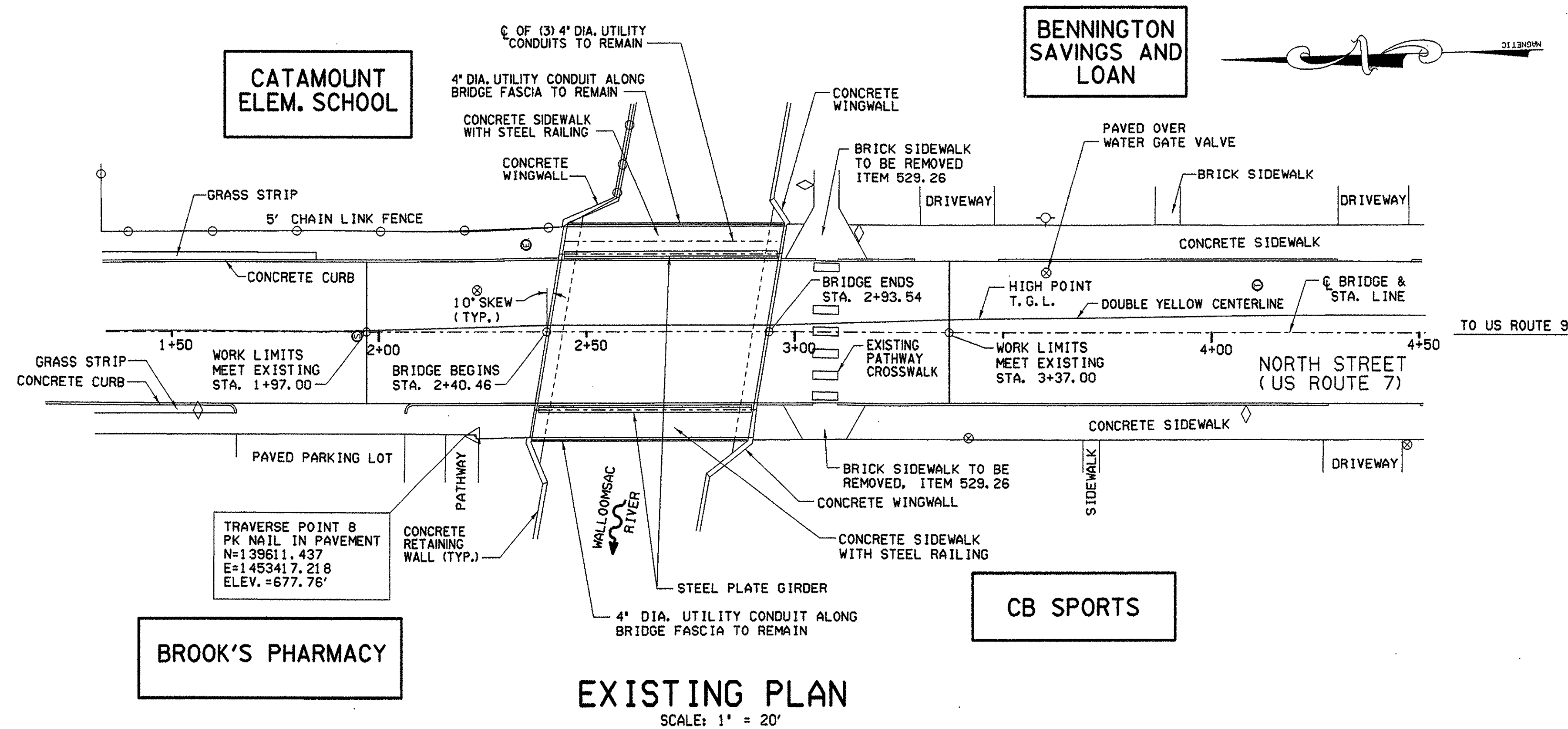


DESIGNED BY J. RIZZO
 DRAWN BY J. SIMKULET
 CHECKED BY K. COLE
 IN CHARGE OF J. STEVENS

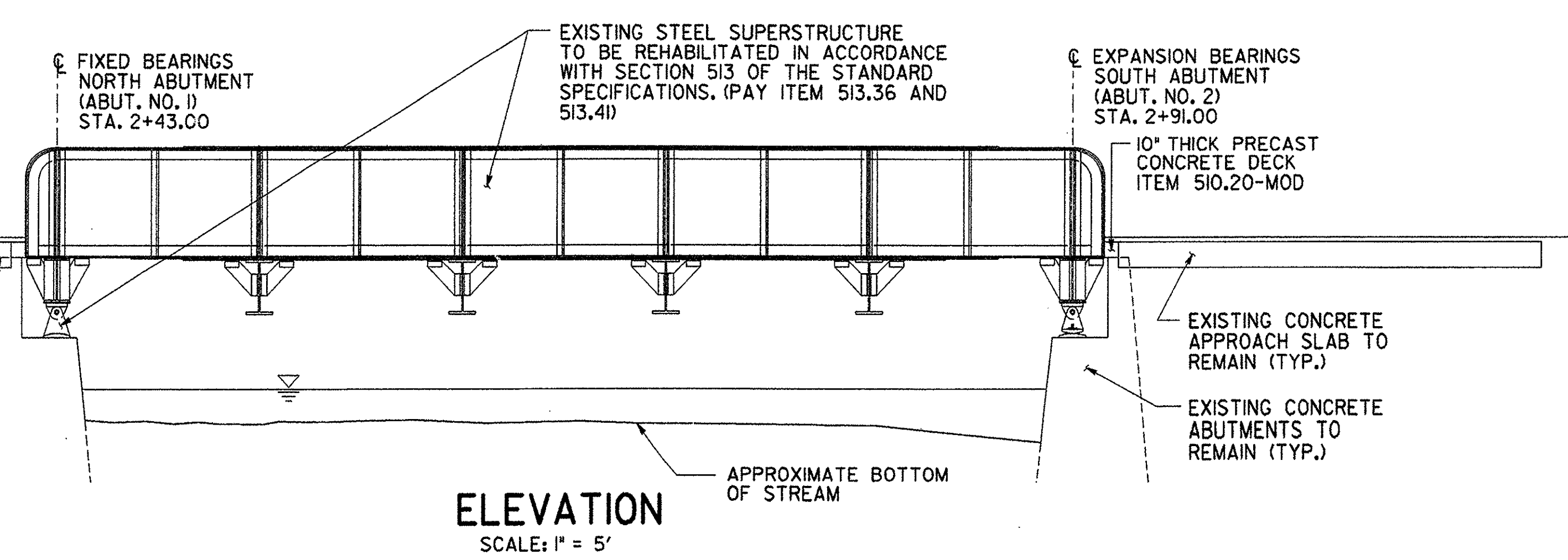


NOTES

- ALL HORIZONTAL COORDINATES ARE BASED ON NAD 83 (1992) AND ELEVATIONS ARE NAVD 88 FROM BENCHMARKS B95004 AND B95005. THE HORIZONTAL COORDINATES OF THESE BENCHMARKS WERE ESTABLISHED FROM GPS OBSERVATIONS AND ADJUSTED BY THE VERMONT GEODETIC SURVEY.
- | | | |
|--------------|--|---|
| BM 'B95004': | VT GEODETIC GPS
NAD 83(1992)
NAVD 88 | N= 142604.912 (FT)
E= 1454662.588 (FT)
EL = 675.41 (FT) |
| BM 'B95005': | VT GEODETIC GPS
NAD 83(1992)
NAVD 88 | N= 141126.688 (FT)
E= 1454564.049 (FT)
EL = 682.71 (FT) |

LEGEND

- CONSTRUCTION SIGN
- ORANGE SAFETY FENCING
- TYPE III CONSTRUCTION BARRICADES
- ORANGE SAFETY BARRELS
- TEMPORARY CONCRETE BARRIER
- TEMPORARY CONCRETE BARRIER WITH LIGHTING
- EXISTING CONCRETE BARRIER WITH LIGHTING
- CHANGEABLE MESSAGE SIGN
- M.U.T.C.D. SIGN DESIGNATION
- TYPE III CONSTRUCTION BARRICADES WITH LIGHTING
- CHAIN LINK FENCE
- UTILITY POLE
- STREET LIGHT POLE
- CATCH BASIN
- TELEPHONE MANHOLE
- ELECTRIC MANHOLE
- SEWER MANHOLE
- FIRE HYDRANT
- WATER GATE VALVE OR SHUTOFF



PROJECT NO. THI-9914		BHF 1000 (17)S	
Greenman-Pedersen CONSULTING ENGINEERS		BENNINGTON BRIDGE #10 (U.S. ROUTE 7) OVER THE WALLOOMSAC RIVER	
GPI		PLAN AND ELEVATION	
55 Monument Ave. Bennington, VT, 05201	DRAWING NO. PE-1	SCALE: AS SHOWN	DATE: DEC ., 1999
		SHEET NO. 5 OF 20	