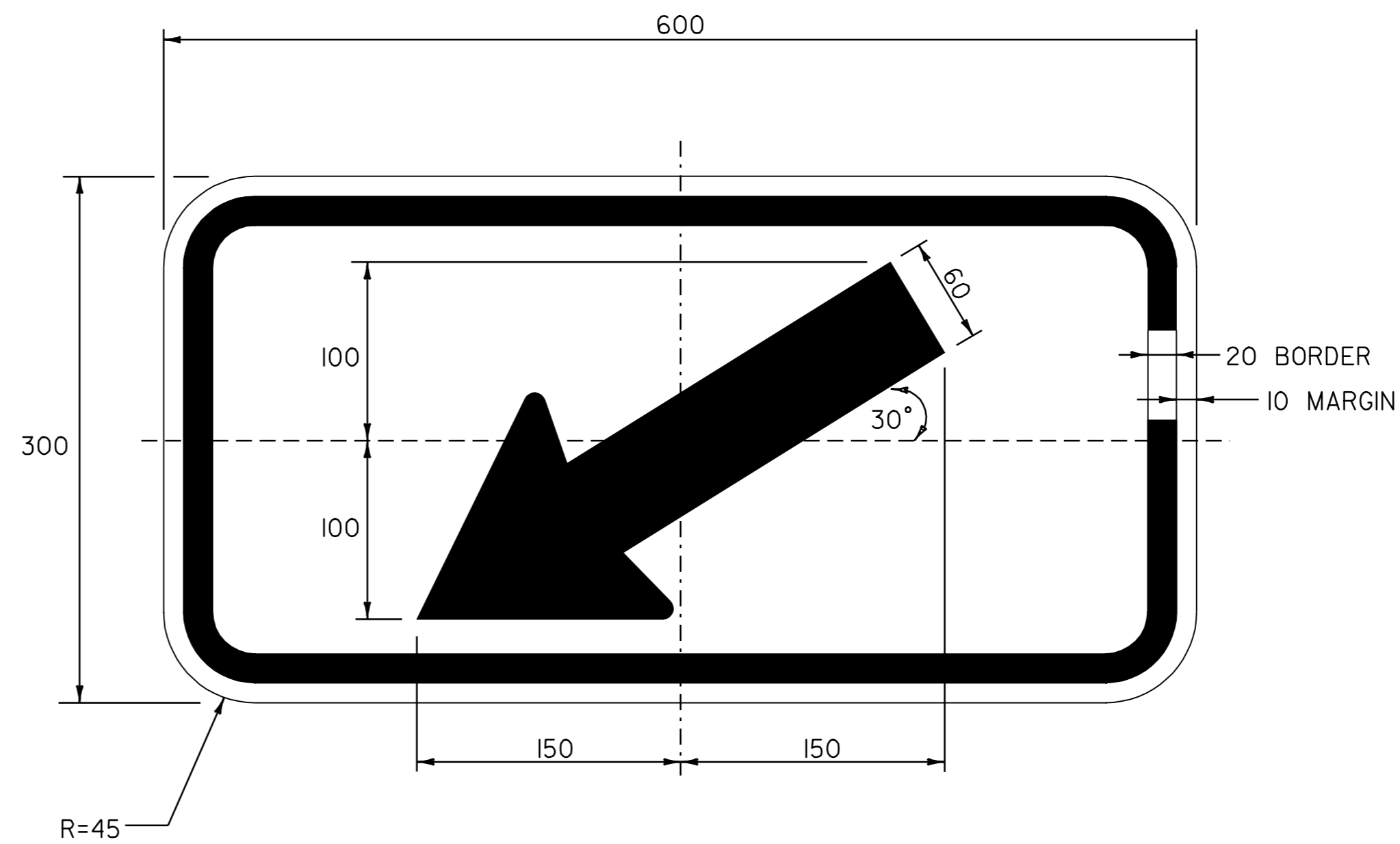


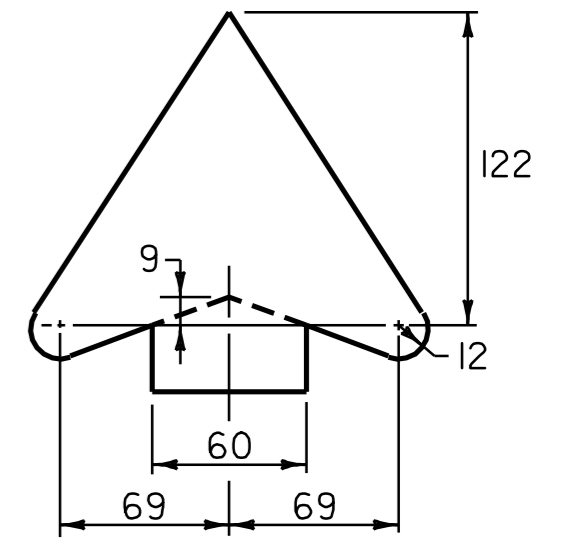
COLOR: BLACK BORDER & SYMBOL
YELLOW BACKGROUND (REFLECTORIZED)

MATERIAL: PER VAOT STANDARD E-I52M
SIGN - U.S. ROUTE 302
STA. 3+583.0 RT
STA. 3+586.0 LT
STA. 3+776.0 RT
STA. 3+777.0 LT
STA. 4+293.0 RT
STA. 4+299.0 LT



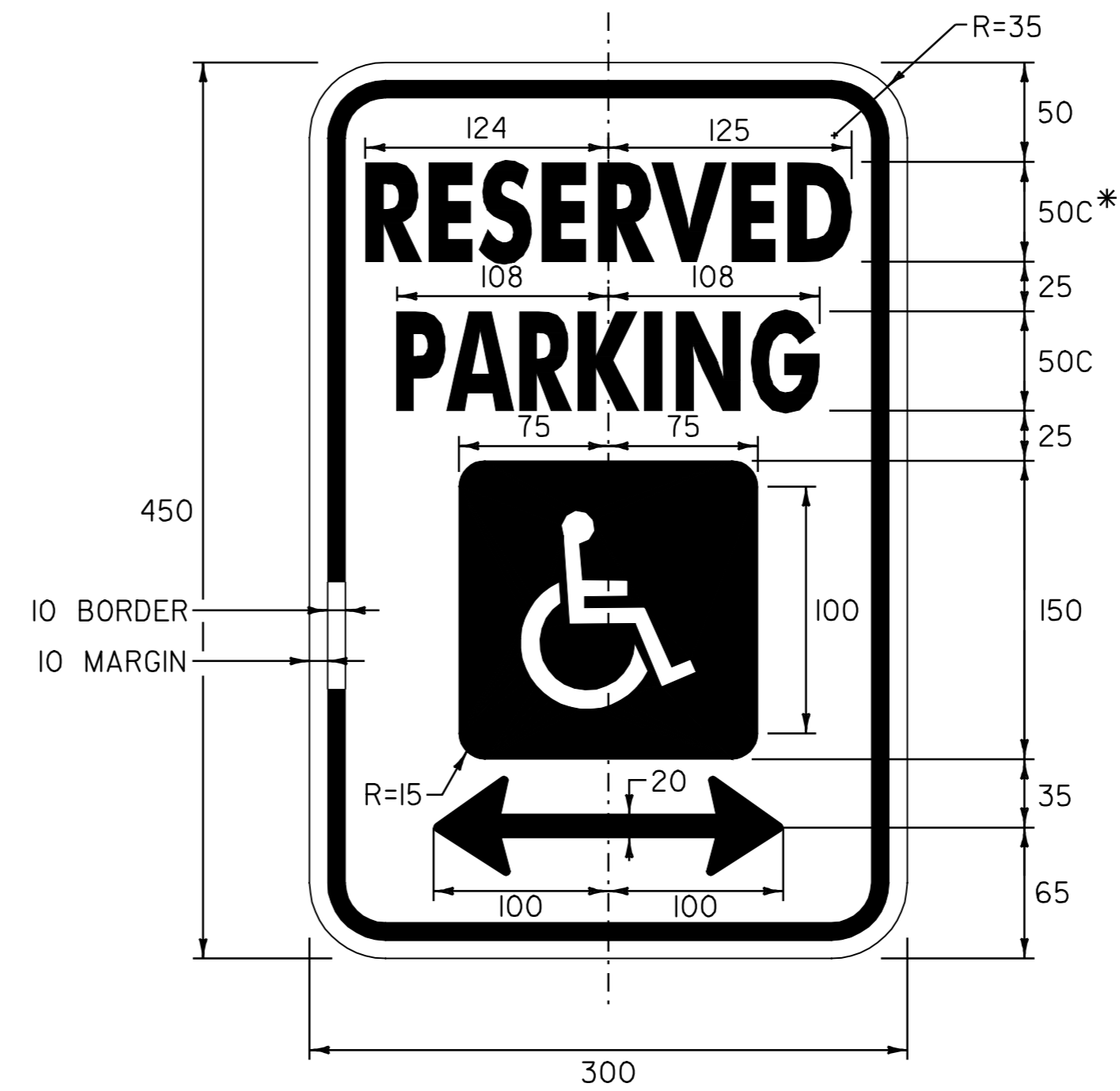
COLOR: BLACK BORDER & SYMBOL
FLUORESCENT YELLOW-GREEN BACKGROUND (REFLECTORIZED)

MATERIAL: MATERIAL PER VAOT STANDARD E-I52M
SIGN U.S. ROUTE 302
STA. 4+473.0 RT
STA. 4+478.0 LT



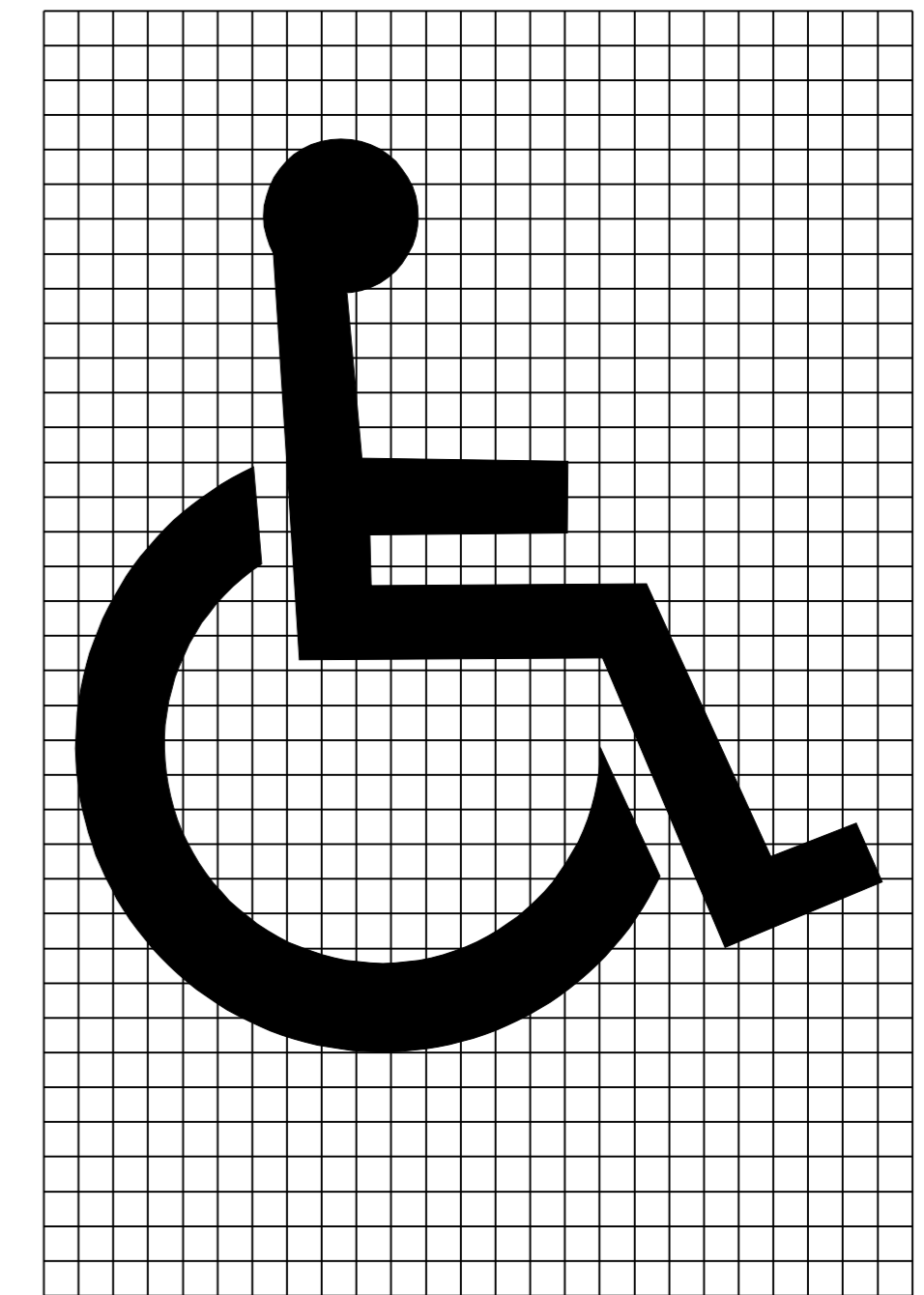
COLOR: BLACK BORDER & TEXT
FLUORESCENT YELLOW-GREEN BACKGROUND (REFLECTORIZED)

MATERIAL: MATERIAL PER VAOT STANDARD E-I52M
SIGN U.S. ROUTE 302
STA. 4+370.0 RT
STA. 4+580.0 LT



COLOR: GREEN BORDER & TEXT
WHITE BACKGROUND
WHITE SYMBOL ON BLUE BACKGROUND

MATERIAL: PER VAOT STANDARD E-I43M
*50% REDUCTION IN SPACING
SIGN - U.S. ROUTE 302
STA. 3+525.3 LT



NOTE:

TEXT LAYOUT DIMENSIONS ARE BASED ON THE "LETTER & NUMERAL WIDTHS & SPACE" TABLES FOUND IN THE "STANDARD HIGHWAY SIGNS" BOOKLET. MINOR VARIATIONS IN TEXT DIMENSIONS ARE ACCEPTABLE BASED ON INDIVIDUAL MANUFACTURER'S LETTER FABRICATION. SIGNIFICANT CHANGES THAT AFFECT SIGN APPEARANCE SHALL BE BROUGHT TO THE ATTENTION OF THE VAOT'S TRAFFIC AND SAFETY DIVISION BEFORE FABRICATION.

DATUM	
VERTICAL	N/A
HORIZONTAL	N/A

ALL DIMENSIONS IN MILLIMETERS EXCEPT WHERE OTHERWISE INDICATED.

**TRAFFIC SIGN
DETAIL
SHEET**

SURVEYED BY	N/A	DATE	N/A
DRAWN BY	C.A.K.	DATE	2/02
SQUAD LEADER	D.E.G.		
DESIGN FILE NO.	/pave/98d086/zd086.dgn		
IPARM FILE	zd086+08.1	DATE PLOTTED	25-APR-2006 14
PROJ. NAME	BARRE CITY		
PROJ. NO.	ST-STP 2102(I)S		
SHEET 30 OF 32	SHEETS		