

METRIC

METRIC

1. ALL DIMENSIONS ARE IN MILLIMETERS UNLESS OTHERWISE NOTED.  
2. ALL WEIGHTS ARE IN KILOGRAMS.

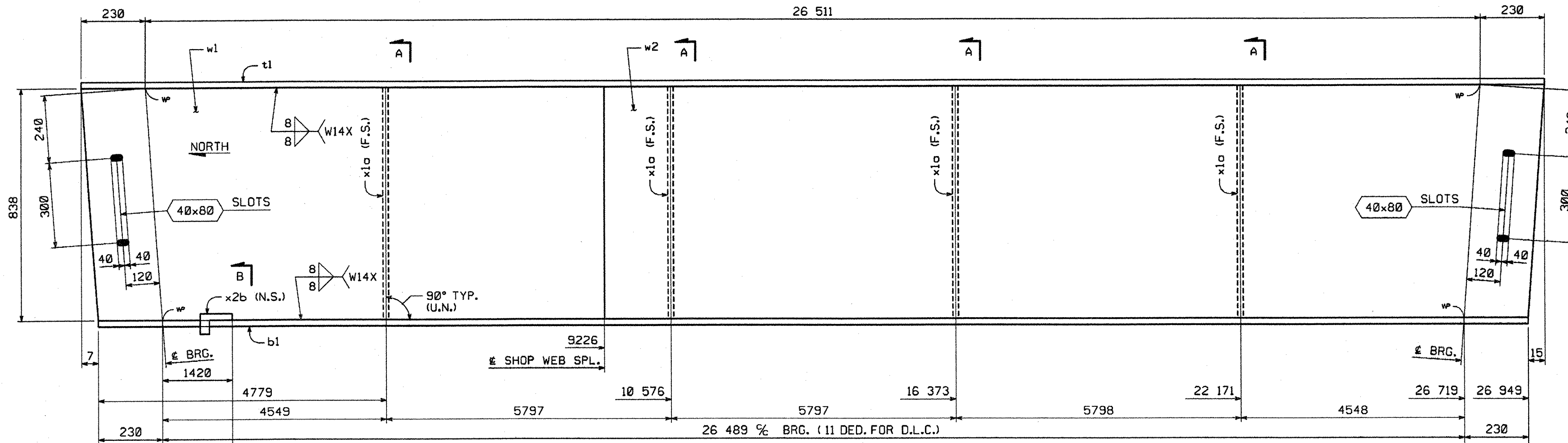
FED. ROAD DIV. NO.	STATE	FED. AID PROJ. NO.
	VT	

BILL OF MATERIAL

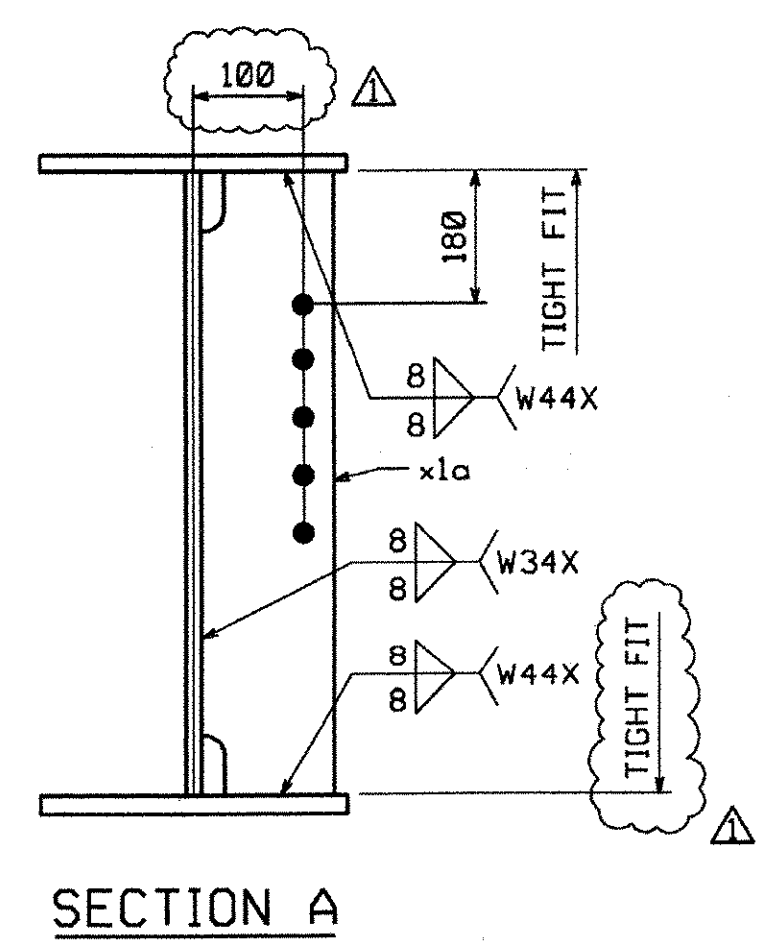
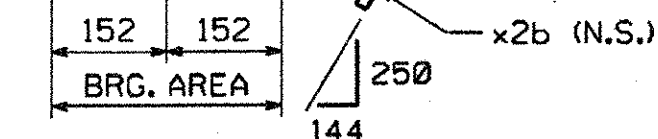
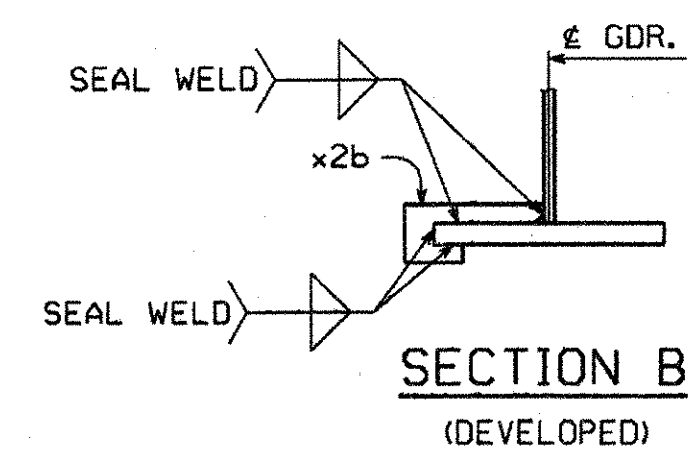
QTY EA.	MARK	COMMODITY	DESCRIPTION	LENGTH	SPEC	GRADE	TEST	REMARKS	GRP.	ITEM	SHIP WEIGHT EA.
1	G4A		GIRDER								6406.33
1	w1	PL	13 x 838	9236	M270M	345W	T			3 2	789.75
1	w2	PL	13 x 838	17738	M270M	345W	T			3 1	1516.73
1	t1	PL	22 x 406	28972	M270M	345W	T			4 2	1890.95
1	b1	PL	25 x 406	26950	M270M	345W	T			4 1	2147.05
4	x1a	PL	13 x 178	838	M270M	345W				7 1	60.88
1	x2b	PL	6 x 75	277	M270M	345W				7 2	0.98

TOTAL WEIGHT THIS SHEET: 6406.33 kg

TOTAL WEIGHT FOR BID ITEM #506.55: 26845.59 kg



GIRDER ~ MK. G4A



ORIENTATION DIAGRAM

SHOP NOTE

**HOLES:** 1 5/16" (U.N.)  
**BOLTS:** NONE  
**PAINT:** NONE  
 FOR GENERAL SHOP NOTES, SEE DWG. G01.  
 FOR WEB CAMBER DIAGRAM, SEE DWG. WC1.

RECEIVED  
 OK'D BY WJH OK'D BY \_\_\_\_\_  
 APR 27 2006  
 RESUBMIT \_\_\_\_\_ APPROVED ✓  
 BY R20 DATE 5/2/06

REVISION	NO.	BY	DATE
REVISD SECTION A AS PER APPROVAL AND UPDATED TOTAL WEIGHT		WBW	4-19-06

**HIGH STEEL STRUCTURES, INC.**  
 1770 Hempstead Road  
 Lancaster, PA 17605-0008  
 Phone 717/299-5211  
 A Division of High Industries, Inc.

GIRDER G4A  
 RTE. NO. TH 35 (BRIDGE NO. 24) OVER PACIFIC BROOK  
 RTE. NO. TH 35 STA. 1+085.800 TO STA. 1+112.300  
 TOWN OF MONTGOMERY  
 FRANKLIN COUNTY, VERMONT  
 STATE OF VERMONT, AGENCY OF TRANSPORTATION

STATE CONTRACT PROJECT NO. BRO 1448 (20)  
 OR REF. NO. \_\_\_\_\_  
 CONTRACTOR A.L. ST. ONGE CONTRACTOR, INC.  
 IN CHARGE: BRITIGAN (IH) MADE BY: RC CHK'D BY: MGK DATE: 3/3/06  
 CONTRACT NUMBER: VT-06001-1 DRAWING NUMBER: 5 OF 5

CODE:30

06533