

METRIC

METRIC

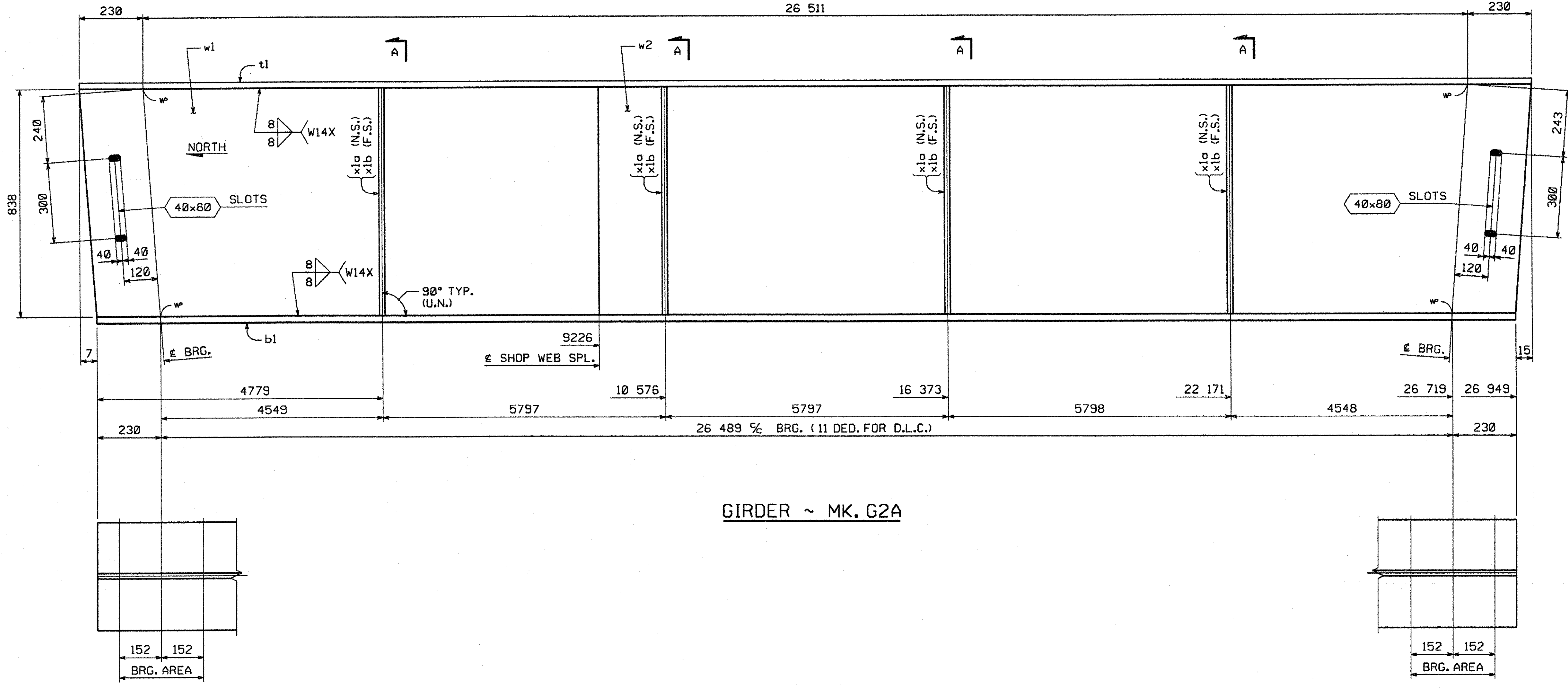
1. ALL DIMENSIONS ARE IN MILLIMETERS UNLESS OTHERWISE NOTED.
2. ALL WEIGHTS ARE IN KILOGRAMS.

FED. ROAD DIV. NO.	STATE	FED. AID PROJ. NO.
	VT	

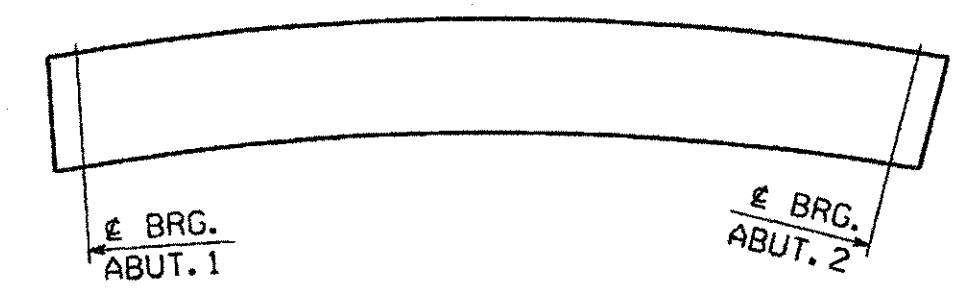
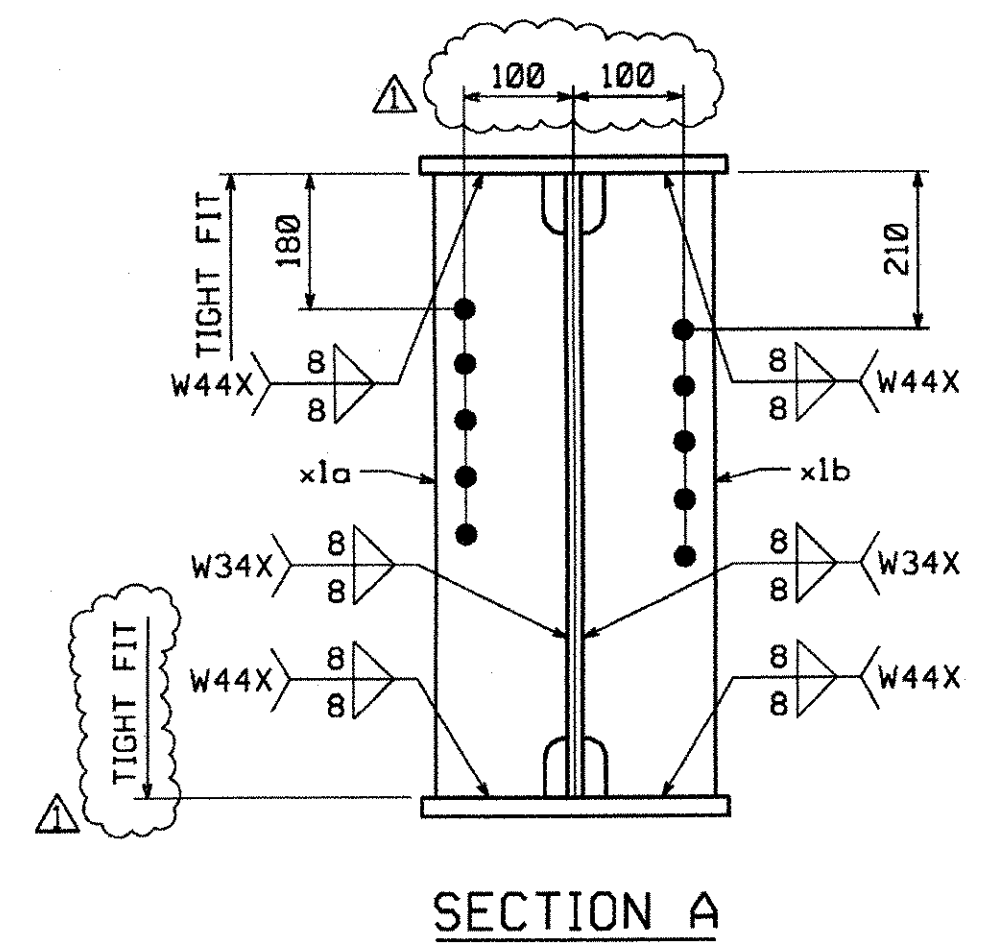
BILL OF MATERIAL

QTY EA	MARK	COMMODITY	DESCRIPTION	LENGTH	SPEC	GRADE	TEST	REMARKS	GRP	ITEM	SHIP WEIGHT EA
1	G2A		GIRDER								6466.24
1	w1	PL	13 x 838	9 236	M270M	345W	T			3 2	789.75
1	w2	PL	13 x 838	17 736	M270M	345W	T			3 1	1516.73
1	t1	PL	22 x 406	26 972	M270M	345W				4 2	1890.95
1	b1	PL	25 x 406	26 950	M270M	345W	T			4 1	2147.05
4	x1a	PL	13 x 178	838	M270M	345W				7 1	60.88
4	x1b	PL	13 x 178	838	M270M	345W				7 1	60.88

TOTAL WEIGHT THIS SHEET: 6 466.24 kg



GIRDER ~ MK. G2A



ORIENTATION DIAGRAM

SHOP NOTE

HOLES: 1 5/16" (U.N.)
BOLTS: NONE
PAINT: NONE
 FOR GENERAL SHOP NOTES, SEE DWG. G01.
 FOR WEB CAMBER DIAGRAM, SEE DWG. W01.

RECEIVED
 OK'D BY: *MWH* OK'D BY: _____
 APR 27 2006
 RESUBMIT: _____ APPROVED:
 BY: *gru* DATE: 5/2/06

NO.	REVISION	BY	DATE
	REVISED SECTION A AS PER APPROVAL	WBW	4-19-06
HIGH STEEL STRUCTURES, INC. <small>1770 Hempstead Road Lancaster, PA 17605-0008 Phone 717/299-5211 A Division of High Industries, Inc.</small>			
GIRDER		G2A	
RTE. NO. TH 35 (BRIDGE NO. 24) OVER PACIFIC BROOK			
RTE. NO. TH 35 STA. 1+085.800 TO STA. 1+112.300			
TOWN OF MONTGOMERY			
FRANKLIN COUNTY, VERMONT			
STATE OF VERMONT, AGENCY OF TRANSPORTATION			
STATE CONTRACT OR REF. NO.	PROJECT NO. BRO 1448 (20)		
CONTRACTOR	A.L. ST. ONGE CONTRACTOR, INC.		
IN CHARGE: BRITIGAN (IH)	MADE BY: RC	CHK'D BY: MGK	DATE: 3/3/06
CONTRACT NUMBER: VT-06001-1	DRAWING NUMBER: 3 OF 5		

06355