

METRIC

METRIC

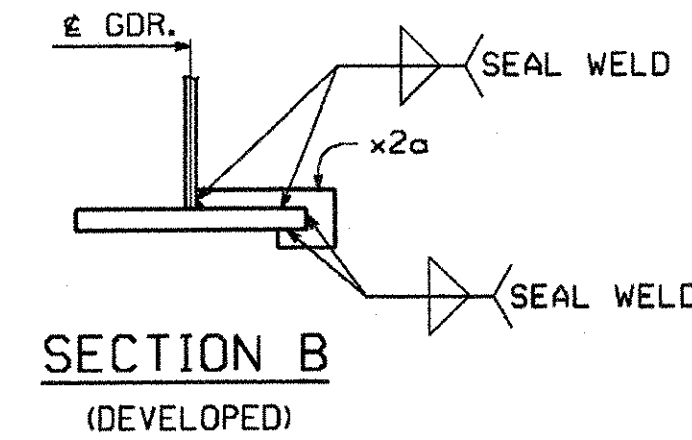
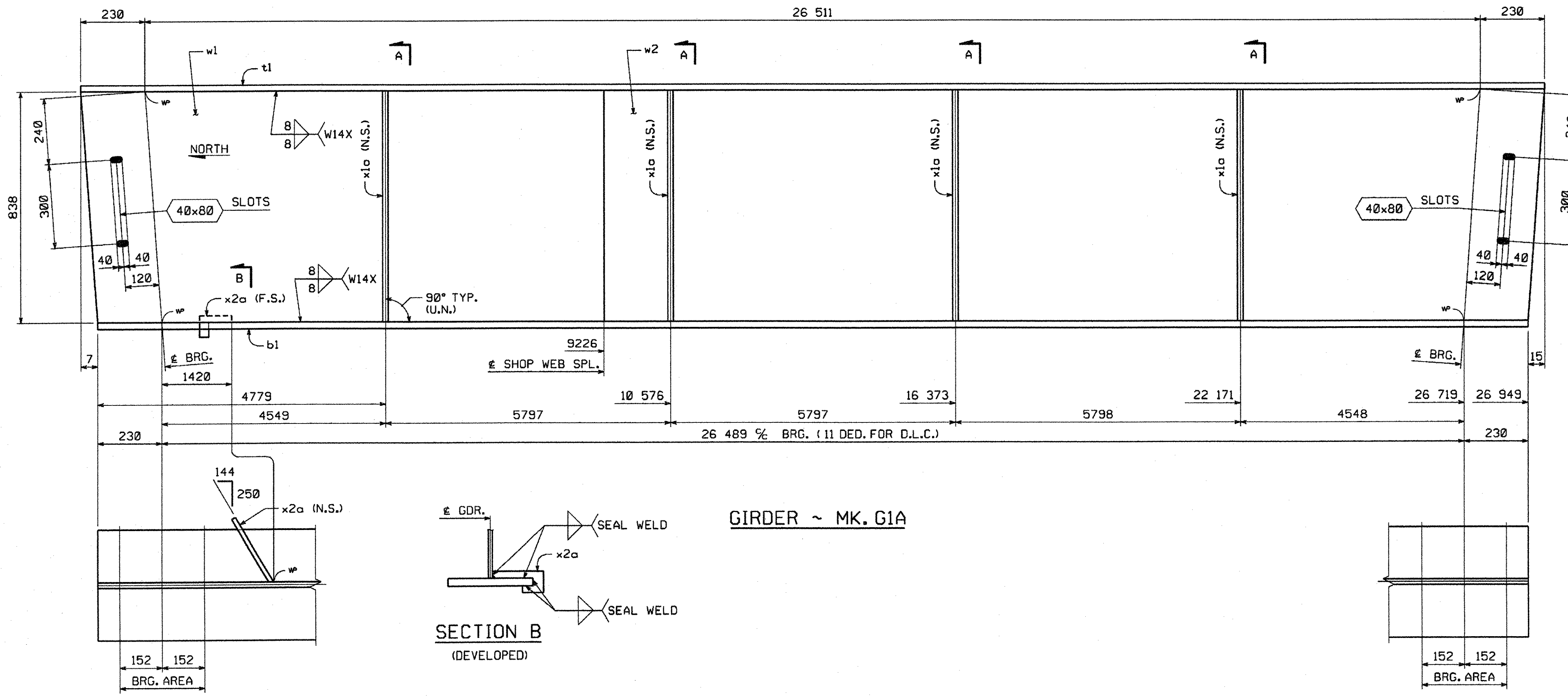
1. ALL DIMENSIONS ARE IN MILLIMETERS UNLESS OTHERWISE NOTED.
2. ALL WEIGHTS ARE IN KILOGRAMS.

FED. ROAD DIV. NO.	STATE	FED. AID PROJ. NO.
	VT	

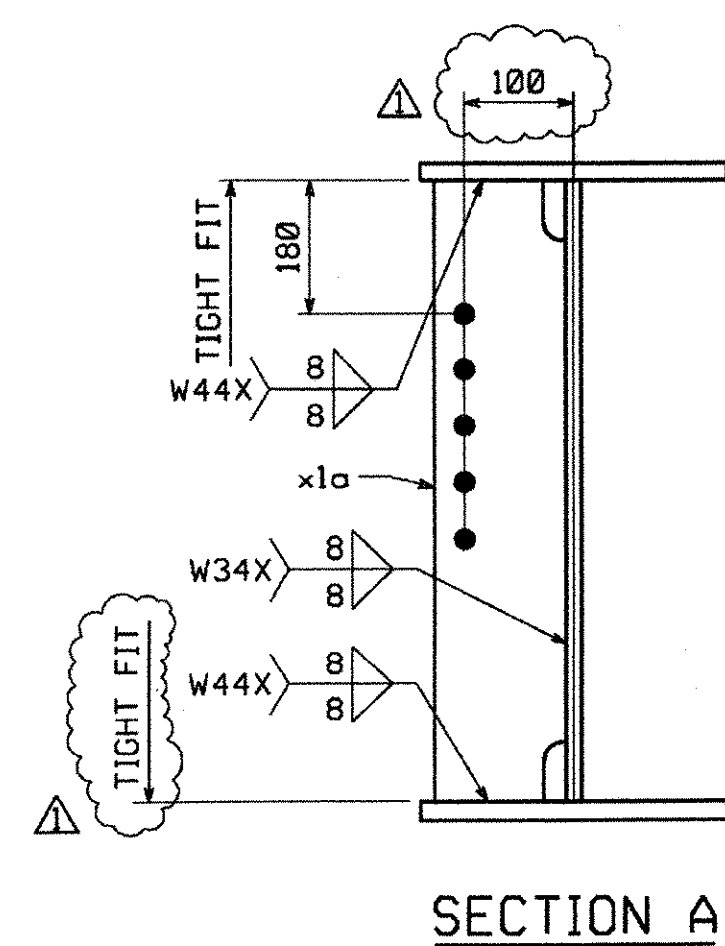
BILL OF MATERIAL

QTY EA	MARK	COMMODITY	DESCRIPTION	LENGTH	SPEC	GRADE	TEST	REMARKS	GRP	ITEM	SHIP WEIGHT EA
1	G1A		GIRDER								6406.33
1	w1	PL	13 x 838	9 236	M270M	345W	T			3 2	789.75
1	w2	PL	13 x 838	17 738	M270M	345W	T			3 1	1516.73
1	t1	PL	22 x 406	26 972	M270M	345W	T			4 2	1890.95
1	b1	PL	25 x 406	26 950	M270M	345W	T			4 1	2147.05
4	x1a	PL	13 x 178	838	M270M	345W				7 1	60.88
1	x2a	PL	6 x 75	277	M270M	345W				7 2	0.98

TOTAL WEIGHT THIS SHEET: 6406.33 kg



GIRDER ~ MK. G1A



ORIENTATION DIAGRAM

SHOP NOTE

HOLES: 1 5/8" (U.N.)
BOLTS: NONE
PAINT: NONE
 FOR GENERAL SHOP NOTES, SEE DWG. G01.
 FOR WEB CAMBER DIAGRAM, SEE DWG. W01.

RECEIVED
 CK'D BY: MKH CK'D BY: _____
 APR 27 2006
 RESUBMIT: _____ APPROVED: ✓
 BY: [Signature] DATE: 12/2/06

REVISION	NO.	BY	DATE
REVISED SECTION A AS PER APPROVAL		WBW	4-19-06
1770 Hempstead Road Lancaster, PA 17605-0008 Phone 717/299-5211 HIGH STEEL STRUCTURES, INC. A Division of High Industries, Inc.			
GIRDER		G1A	
RTE. NO. TH 35 (BRIDGE NO. 24) OVER PACIFIC BROOK			
RTE. NO. TH 35 STA. 1+085.800 TO STA. 1+112.300			
TOWN OF MONTGOMERY			
FRANKLIN COUNTY, VERMONT			
STATE OF VERMONT, AGENCY OF TRANSPORTATION			
STATE CONTRACT OR REF. NO. PROJECT NO. BRO 1448 (20)			
CONTRACTOR A.L. ST. ONGE CONTRACTOR, INC.			
IN CHARGE: BRITIGAN (IH)	MADE BY: RC	CHK'D BY: MGK	DATE: 3/3/06
CONTRACT NUMBER: VT-06001-1		DRAWING NUMBER: 2 OF 5	

BY: cahofffer
PLOTTED: 04/19/06 03:55:35 PM