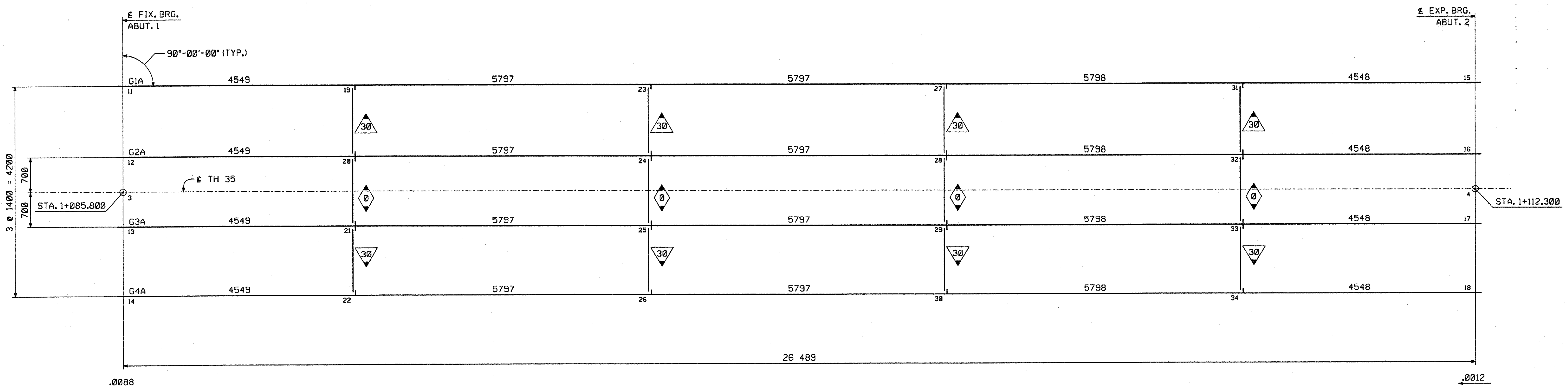


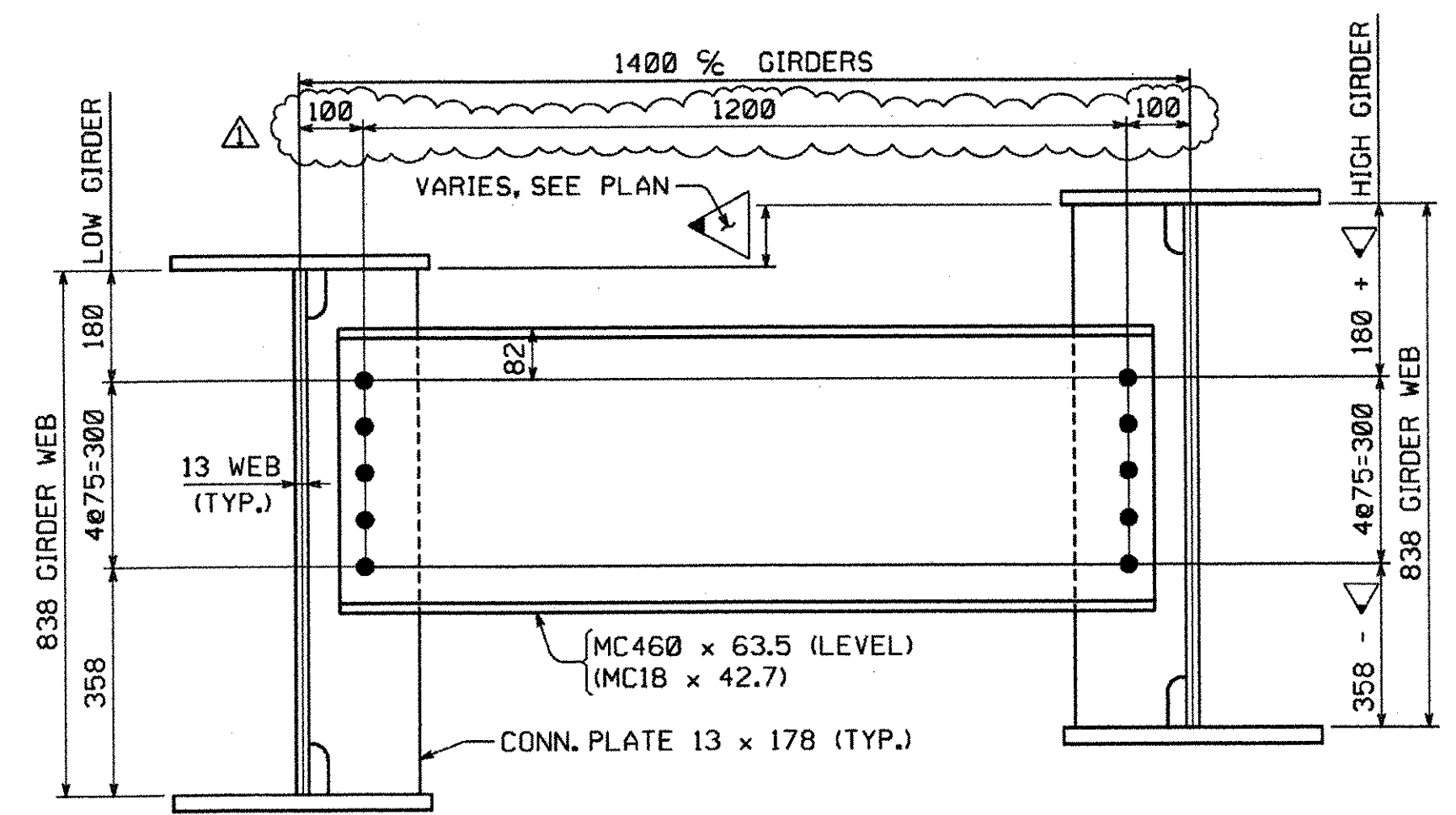
METRIC 1. ALL DIMENSIONS ARE IN MILLIMETERS UNLESS OTHERWISE NOTED.
2. ALL WEIGHTS ARE IN KILOGRAMS.

| | | |
|--------------------|-------|--------------------|
| FED. ROAD DIV. NO. | STATE | FED. AID PROJ. NO. |
| | VT | |

Scale = 0.025000 of full size.



CALCULATION PLAN



INTERMEDIATE DIAPHRAGM LAYOUT
(LOOKING STATIONS AHEAD)

NOTES:
 DIMENSIONS ON PLAN ALONG GIRDERS ARE GIVEN TO THE CHORD AT THE BOTTOM OF WEB IN FULLY CAMBERED POSITION. ALL OTHER DIMENSIONS ARE GIVEN HORIZONTALLY.
 DIMENSIONS PLACED ON THE GIRDER LINES REPRESENT DIAPHRAGM SPACING. FIGURES GIVEN THUS: .0088 ARE THE GRADES OF THE GIRDERS AT THE BEARINGS IN FINAL POSITION; ARROW POINTS DOWNGRADE.
 ALL STIFFENER AND CONNECTION PLATE SPACINGS ARE GIVEN TO \pm PLATE. ENDS OF GIRDERS TO BE VERTICAL IN FINAL POSITION.
 ALL STEEL TO BE AASHTO M270M GRADE 345W (U.N.).
 ALL FIELD CONNECTIONS TO BE MADE WITH $\frac{7}{8}$ " H.S. (AASHTO M164 TYPE 3) BOLTS IN $\frac{1}{4}$ " HOLES (U.N.).
 FIGURES GIVEN THUS: $\frac{30}{30}$ ARE THE DIFFERENCES IN ELEVATIONS OF GIRDERS (IN THE PLANE OF THE DIAPHRAGM IN ERECTED POSITION) AT DIAPHRAGMS; ARROW POINTS TOWARD LOW GIRDER.
 ALL STATIONS ARE GIVEN IN METERS.

****NOTE****
 THE PURPOSE OF THIS DRAWING IS TO COORDINATE GEOMETRIC CONTROL INFORMATION. THIS DRAWING IS SUBMITTED FOR INFORMATION ONLY AND IS NOT INTENDED FOR SHOP FABRICATION. THIS DRAWING IS FOR REFERENCE ONLY, APPROVAL IS NOT REQUIRED.

RECEIVED
 OK'D BY: *WJH* OK'D BY: _____
 APR 27 2006
 RESUBMIT _____ APPROVED
 BY: *RJL* DATE: 5/2/06

| | | | |
|---|---|---------------|--------------|
| NO. | REVISION | BY | DATE |
| | REVISED DIAPHRAGM CONN. AS PER APPROVAL | WJW | 4-19-06 |
| 1770 Hempstead Road Lancaster, PA 17605-0008 Phone 717/299-5218 HIGH STEEL STRUCTURES, INC. <i>HS</i> A Division of High Industries, Inc. | | | |
| WORKSHEET - CALCULATION PLAN | | | |
| RTE. NO. TH 35 (BRIDGE NO. 24) OVER PACIFIC BROOK | | | |
| RTE. NO. TH 35 STA. 1+085.800 TO STA. 1+112.300 | | | |
| TOWN OF MONTGOMERY | | | |
| FRANKLIN COUNTY, VERMONT | | | |
| STATE OF VERMONT, AGENCY OF TRANSPORTATION | | | |
| STATE CONTRACT OR REF. NO. | PROJECT NO. BRO 1448 (20) | | |
| CONTRACTOR | A.L. ST. ONGE CONTRACTOR, INC. | | |
| IN CHARGE: BRITIGAN (IH) | MADE BY: RC | CHK'D BY: MGK | DATE: 3/3/06 |
| CONTRACT NUMBER: VT-06001-1 | DRAWING NUMBER: WS1 OF WS1 | | |

STRUCTURES COPY *05355*