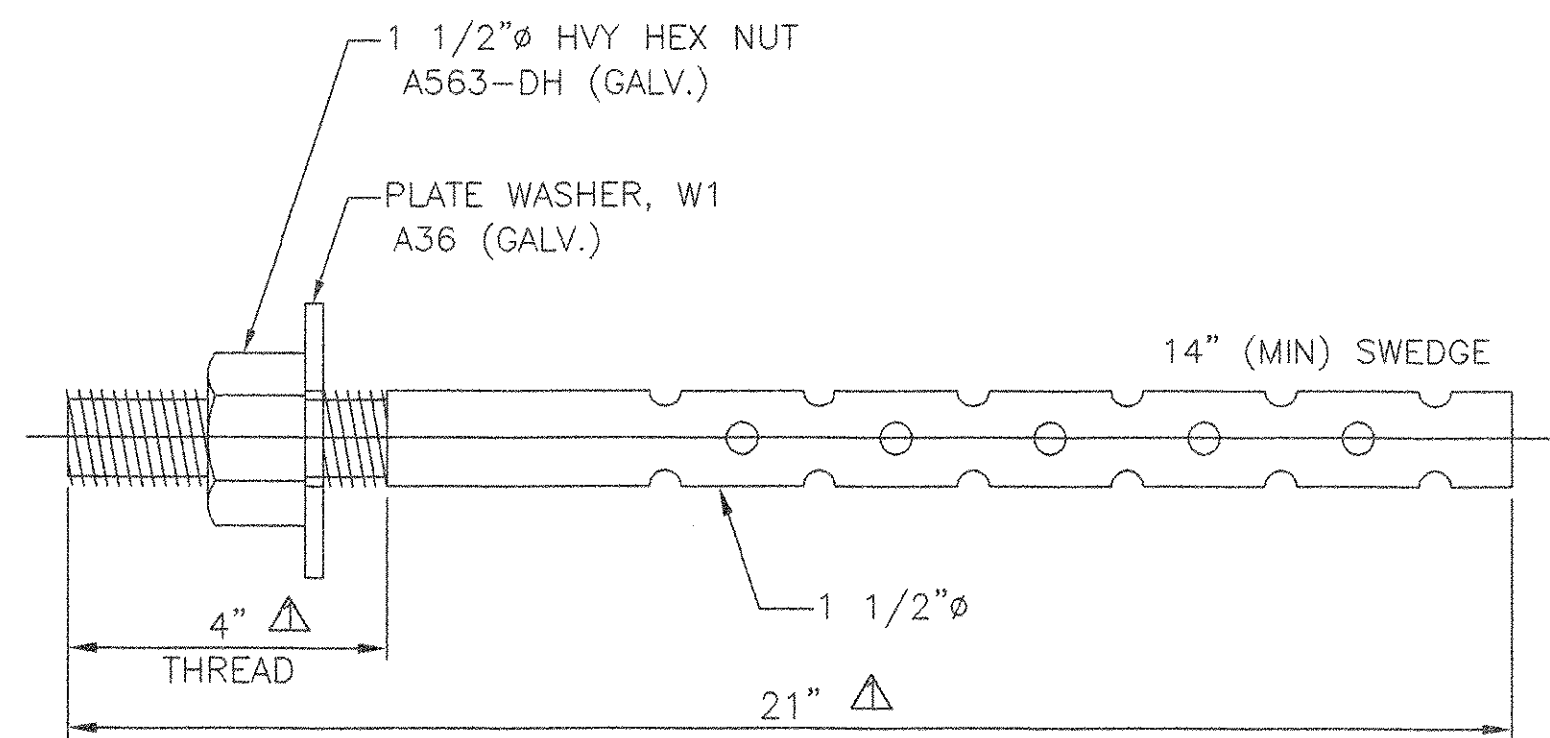


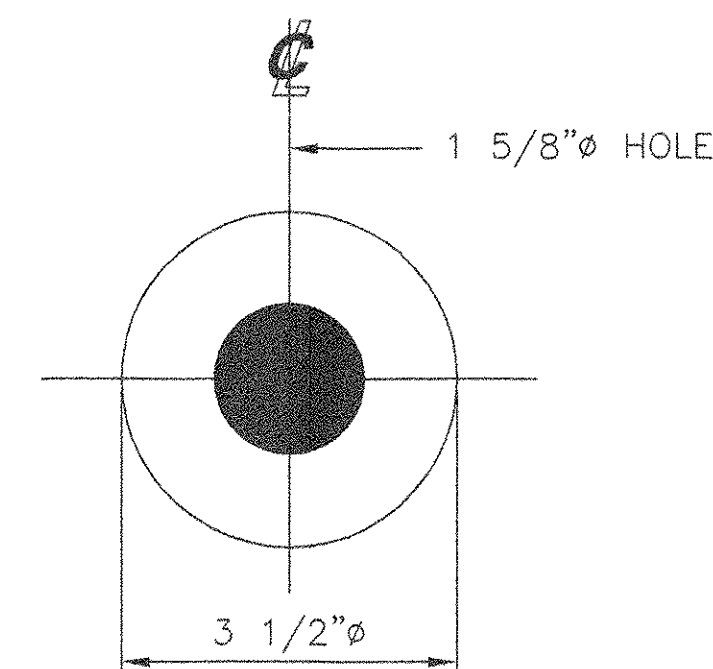
MARK	QTY	DESCRIPTION	IN	16ths	FAB MARK	MILL MARK	WEIGHT
AB1	36	RD 1 1/2"φ	△	21	0	GALV. F1554 GR. 55	451
AB2	36	RD 1 1/2"φ	△	21	0	GALV. F1554 GR. 55	397
W1	72	PL 3/8" x 3 1/2"φ	.	.	.	GALV.	57
.	72	1 1/2"φ HVY HEX NUTS	.	.	.	GALV. A563-DH	68

TOTAL WEIGHT IN LBS = 973



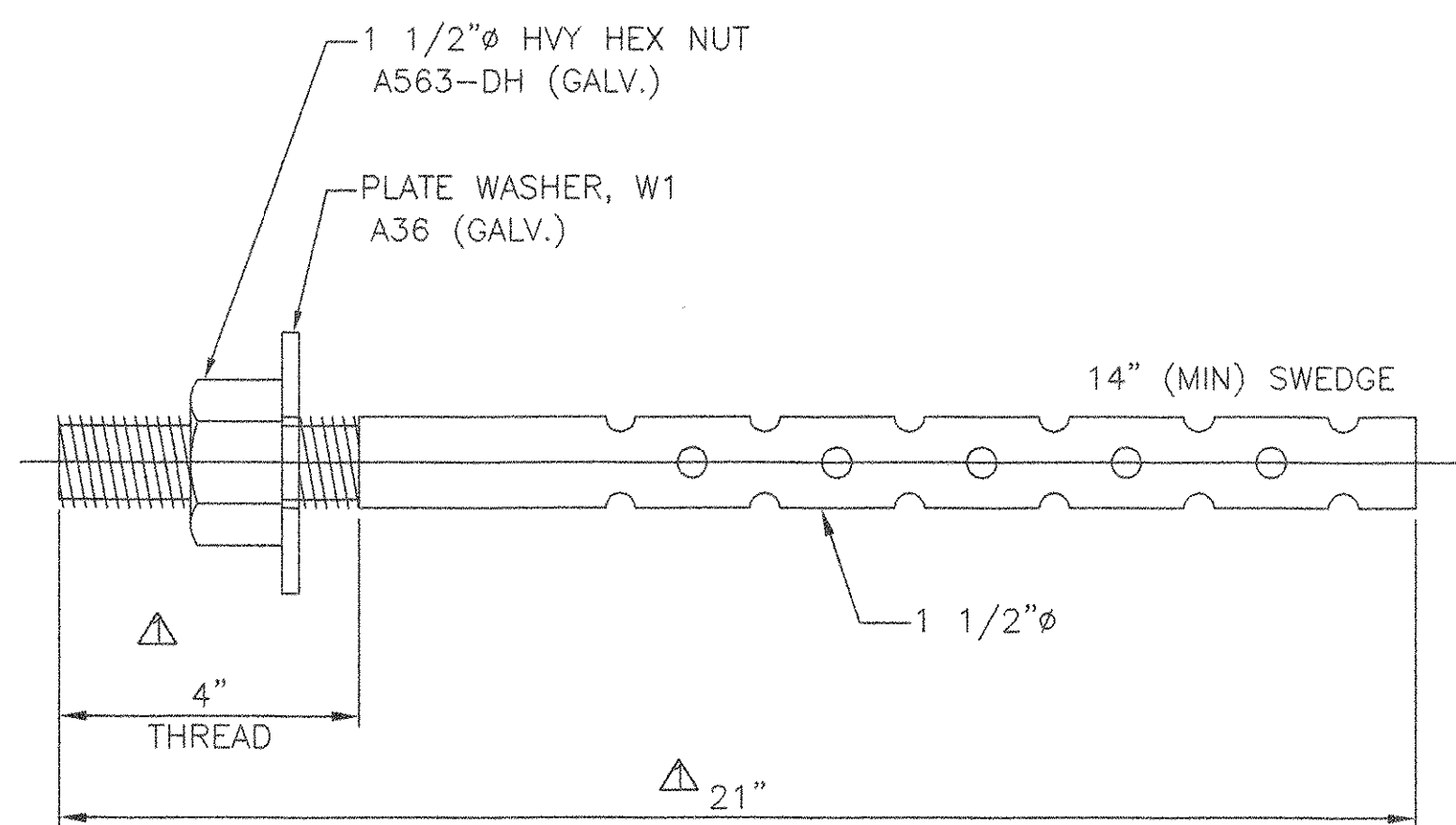
36 ANCHOR BOLTS, AB1

RD 1 1/2"φ x 21" △
 F1554 GR. 55 (GALV.)
 MIN. EMBED: 15"
 LOCATE AT
 ABUTMENT 1, SPAN 1
 PIER 1, SPAN 1
 PIER 2 SPAN 2



72 PLATE WASHERS, W1

PL 3/8" x 3 1/2"φ
 (GALV.)
 USE WITH
 ANCHOR BOLTS, AB1 & AB2



36 ANCHOR BOLTS, AB2

RD 1 1/2"φ x 21" △
 F1554 GR. 55 (GALV.)
 MIN. EMBED: 15"
 LOCATE AT
 PIER 1, SPAN 2
 PIER 2, SPAN 3
 ABUTMENT 2, SPAN 3

SEE SHEET 1 FOR SHOP NOTES.

STATE OF VERMONT
 AGENCY OF TRANSPORTATION
 HIGHWAY VT 118
 OVER THE TROUT RIVER
 TOWN OF
 MONTGOMERY, VERMONT
 PROJECT NO. BHF-0283(8)S

RECEIVED
 CK'D BY *WHT* CK'D BY *[Signature]*
 MAY 18 2006
 RESUBMIT _____ APPROVED *[Signature]*
 BY *[Signature]* DATE *4/20/06*

COSMEC, INC. 70 SOUTH STREET
 WALPOLE, MA. 02081

SCALE NONE DRAWN BY: JEP CHECKED BY: PJM
 SHEET 7 OF 7 DATE: 03/06 DATE: 03/06

COSMEC BEARINGS

REV.	REVISIONS	BY:	DATE	CHK'D BY:	DATE	CUSTOMER:	S.O. NUMBER	DRAWING NUMBER	REV.
△	REVISED A-BOLTS PER APPROVED AS NOTED DRAWINGS	MM	4/06	MCM	4/06	A. L. ST. ONGE	60530	4724	1