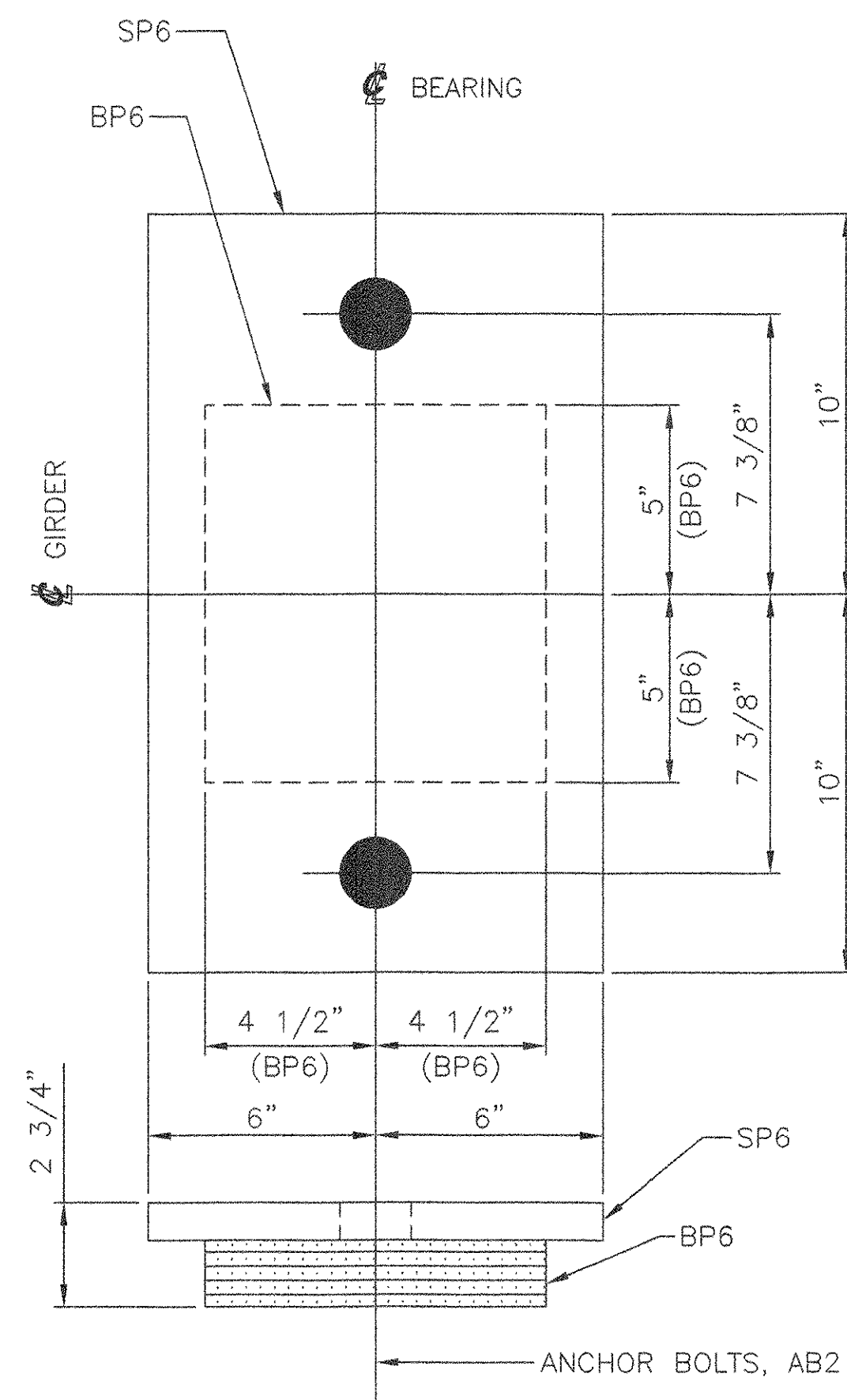


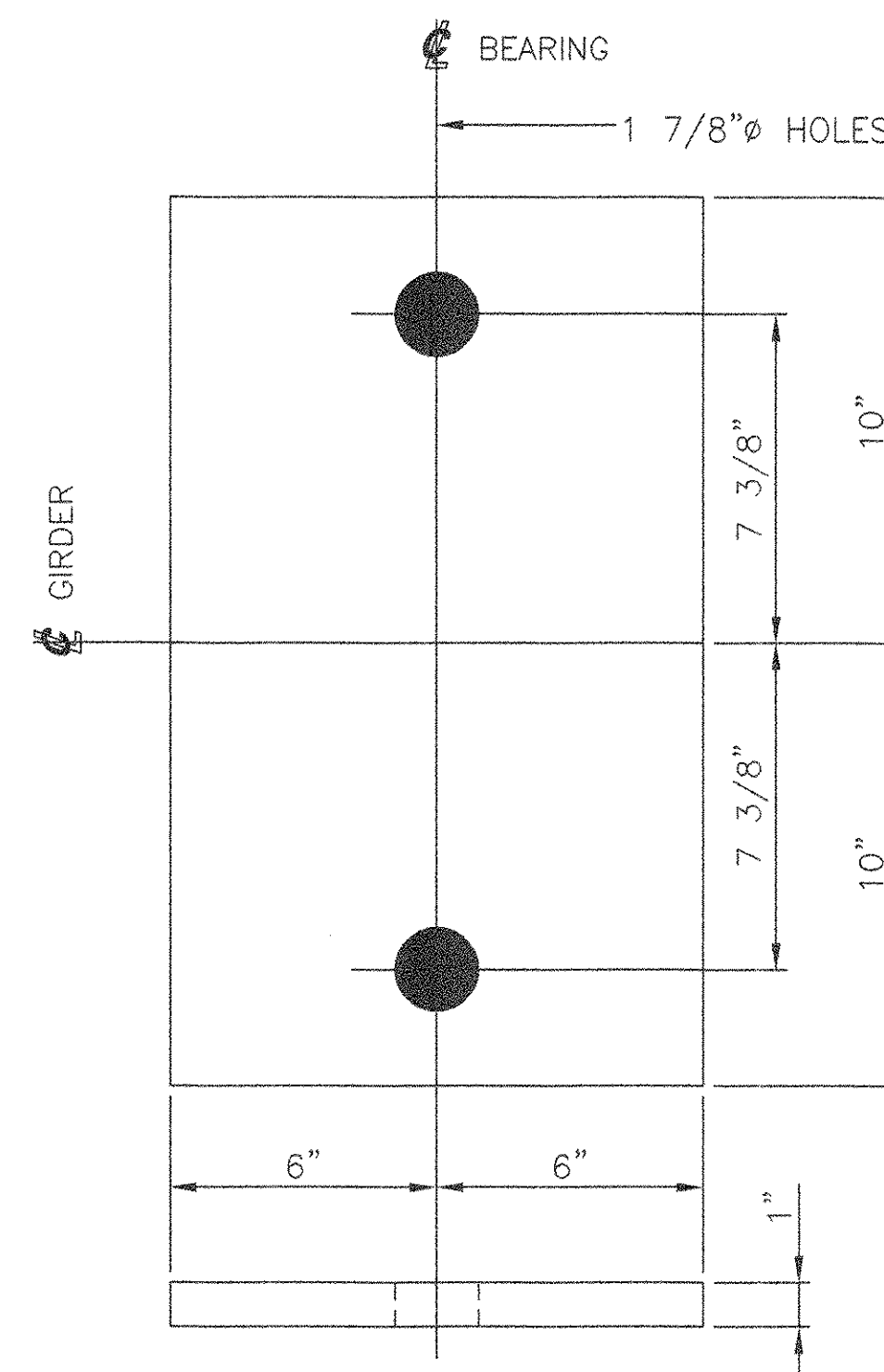
MARK	QTY	DESCRIPTION	IN	16ths	FAB MARK	MILL MARK	WEIGHT
FBA-2	6	FIXED BEARING ASSEMBLIES					
SP6	6	PL 1" x 12"	20	0		METALIZED	408
BP6	6	PREF. PAD 1 3/4" x 9"	10	0			49

TOTAL = 457



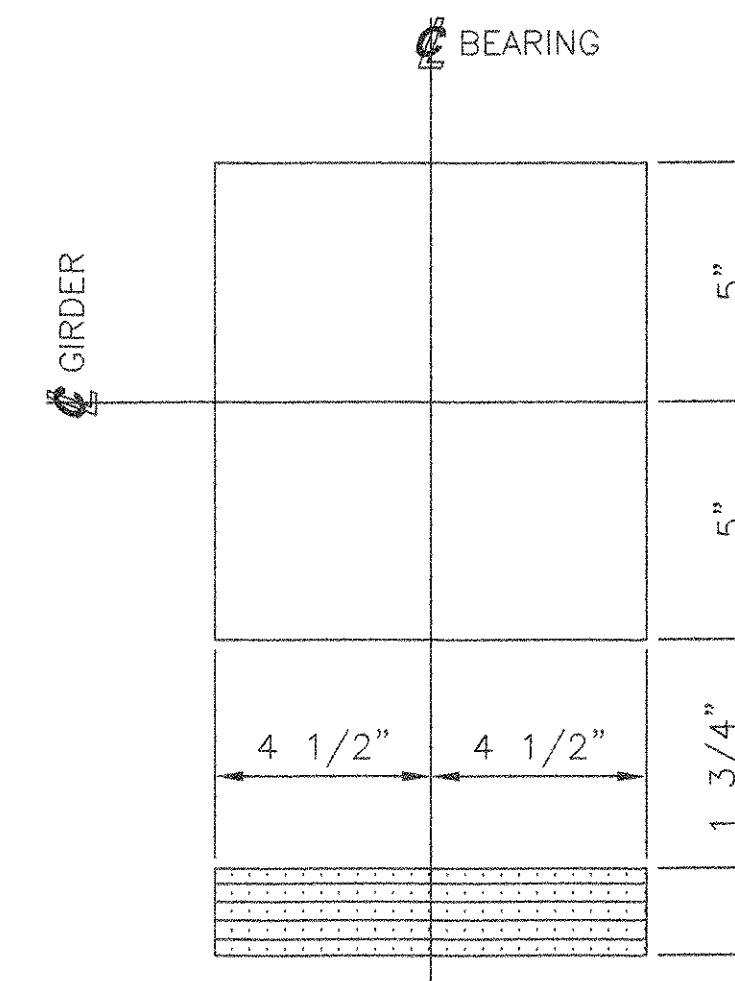
6 FIXED BEARING ASSEMBLIES, FBA-2

LOCATE AT
ABUTMENT 2, SPAN 3
GIRDERS 1 THRU 6



6 FIXED SOLE PLATES, SP6

△ PL 1" X 12" X 20"
(METALIZED)
USE WITH
FIXED BEARING ASSEMBLY, FBA-2



6 BEARING PADS, BP6
PREFORMED FABRIC PAD 1 3/4" X 9" X 10"
USE WITH
FIXED BEARING ASSEMBLY, FBA-2

SEE SHEET 1 FOR SHOP NOTES.

STATE OF VERMONT
AGENCY OF TRANSPORTATION

VT 118
OVER THE TROUT RIVER
TOWN OF
MONTGOMERY, VERMONT
PROJECT NO. BHF-0283(8)S

COSMEC, INC. 70 SOUTH STREET
WALPOLE, MA. 02081

RECEIVED
OK'D BY: *[Signature]* OK'D BY: *[Signature]*
MAY 18 2006
RESUBMIT: _____ APPROVED: _____
BY: *[Signature]* DATE: *[Signature]*

SCALE: NONE DRAWN BY: JEP CHECKED BY: PJM
SHEET 6 OF 7 DATE: 03/06 DATE: 03/06

COSMEC BEARINGS

REV	DESCRIPTION	BY	DATE	OK'D BY	DATE	CUSTOMER	S.O. NUMBER	DRAWING NUMBER	REV
△	REVISED PER APPROVED AS NOTED DRAWING	MM	5/06	MCM	5/06	A. L. ST. ONGE	60530	4723	1