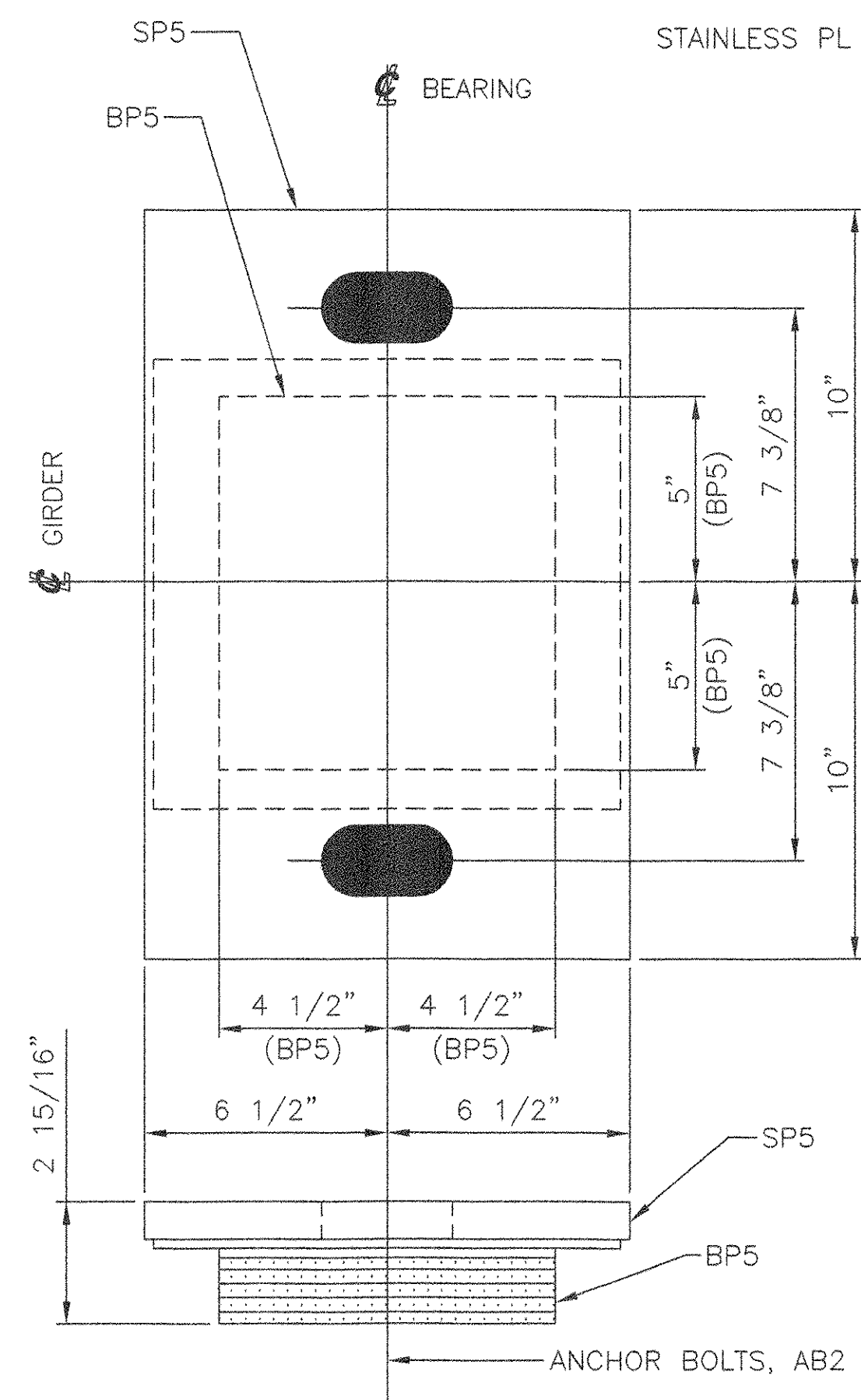


MARK	QTY	DESCRIPTION	IN	16ths	FAB MARK	MILL MARK	WEIGHT
EBA-4	6	EXPANSION BEARING ASSEMBLIES					
SP5	6	PL 1" x 13"	20	0		METALIZED	442
	6	STAINLESS PL 1/8" (11ga) x 12 1/2"	11	0	ssa5	A240 TYPE 304	35
BP5	6	PREF. PAD 1 3/4" x 9"	10	0			49
	6	PTFE 1/16" x 9"	10	0	tfe5	D1457	3

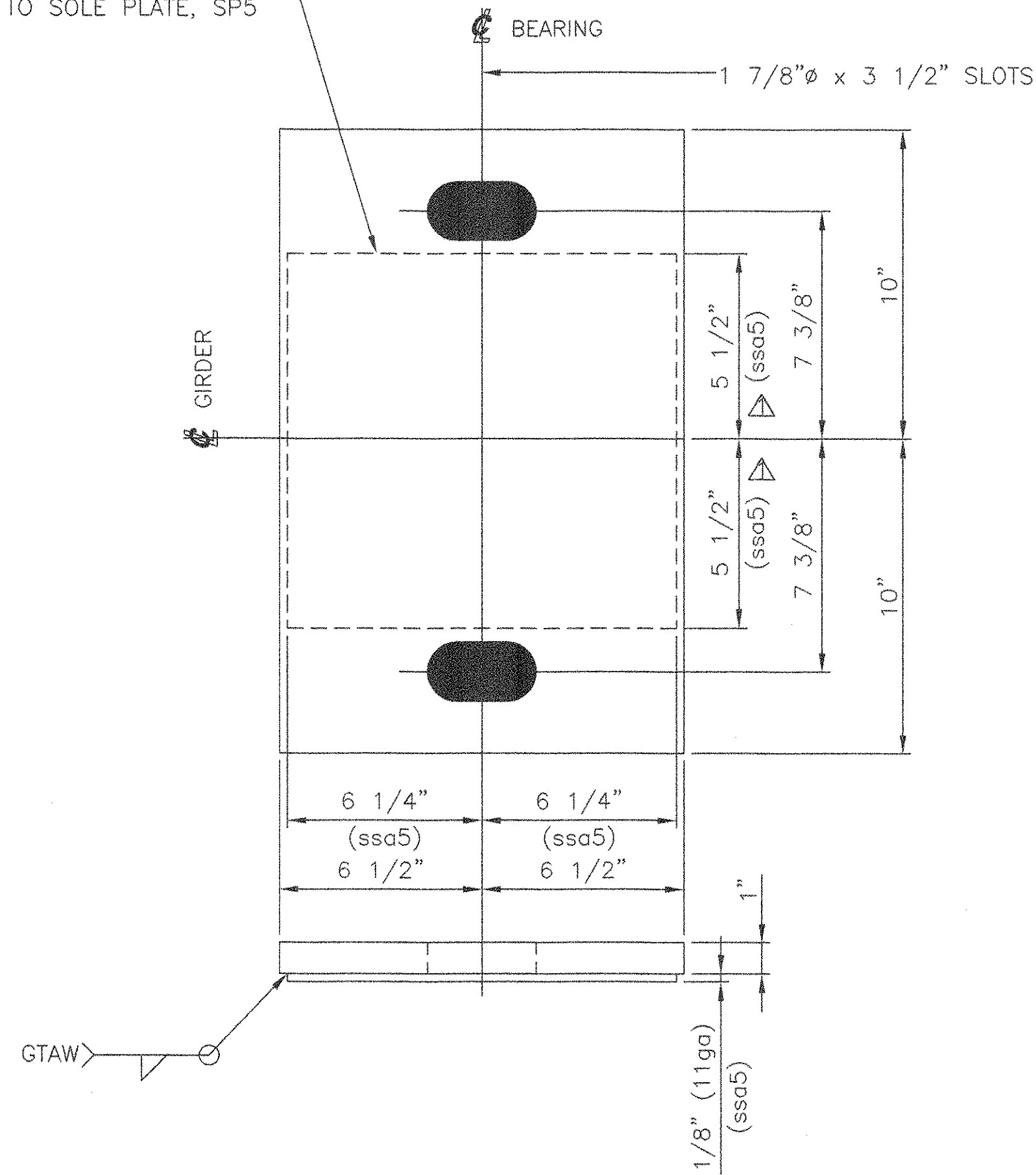
TOTAL = 529



6 EXPANSION BEARING ASSEMBLIES, EBA-4

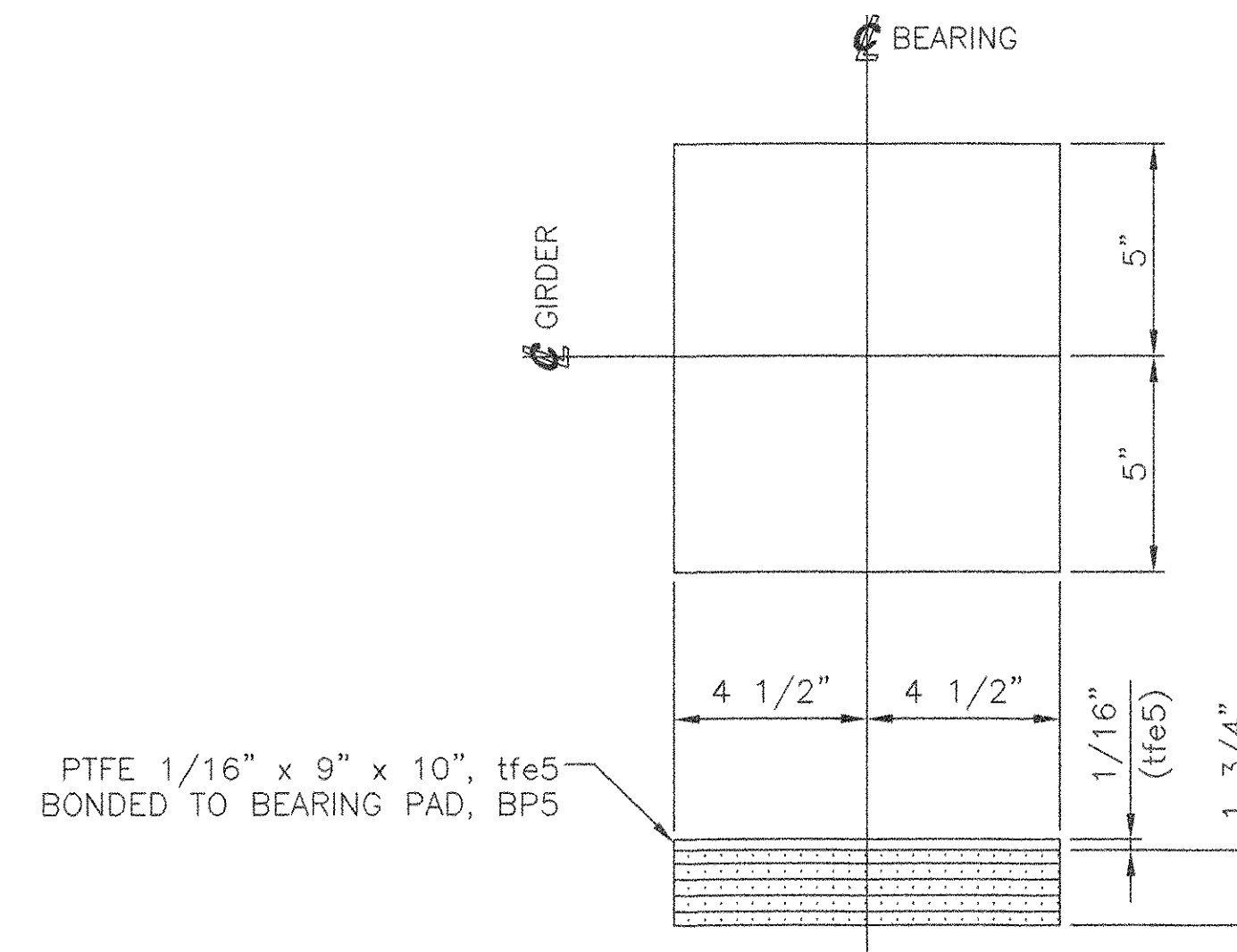
LOCATE AT
PIER 2, SPAN 3
GIRDERS 1 THRU 6

STAINLESS PL 1/8" (11ga) x 12 1/2" x 12", ssa5
WELDED TO SOLE PLATE, SP5



6 EXPANSION SOLE PLATES, SP5

PL 1" X 13" X 20"
(METALIZED)
USE WITH
EXPANSION BEARING ASSEMBLY, EBA-4



6 BEARING PADS, BP5
PREFORMED FABRIC PAD 1 3/4" X 9" X 10"
USE WITH
EXPANSION BEARING ASSEMBLY, EBA-4

SEE SHEET 1 FOR SHOP NOTES.

STATE OF VERMONT
AGENCY OF TRANSPORTATION

VT 118
OVER THE TROUT RIVER
TOWN OF
MONTGOMERY, VERMONT
PROJECT NO. BHF-0283(8)S

RECEIVED
OK'D BY: *WKA* OK'D BY: *col*
MAY 18 2006
RESUBMIT: _____ APPROVED: _____
BY: *col* DATE: *4/6/06*

COSMEC, INC. 70 SOUTH STREET
WALPOLE, MA. 02081

SCALE: NONE DRAWN BY: JEP CHECKED BY: PJM
SHEET 5 OF 7 DATE: 03/06 DATE: 03/06

COSMEC BEARINGS

REV.	REVISED ST. STEEL DIMS. PER APPROVED AS NOTED DRAWING.	BY:	DATE	OK'D BY:	DATE	CUSTOMER:	S.O. NUMBER	DRAWING NUMBER	REV.
△		MM	4/06	MCM	4/06	A. L. ST. ONGE	60530	4722	1

050 BB