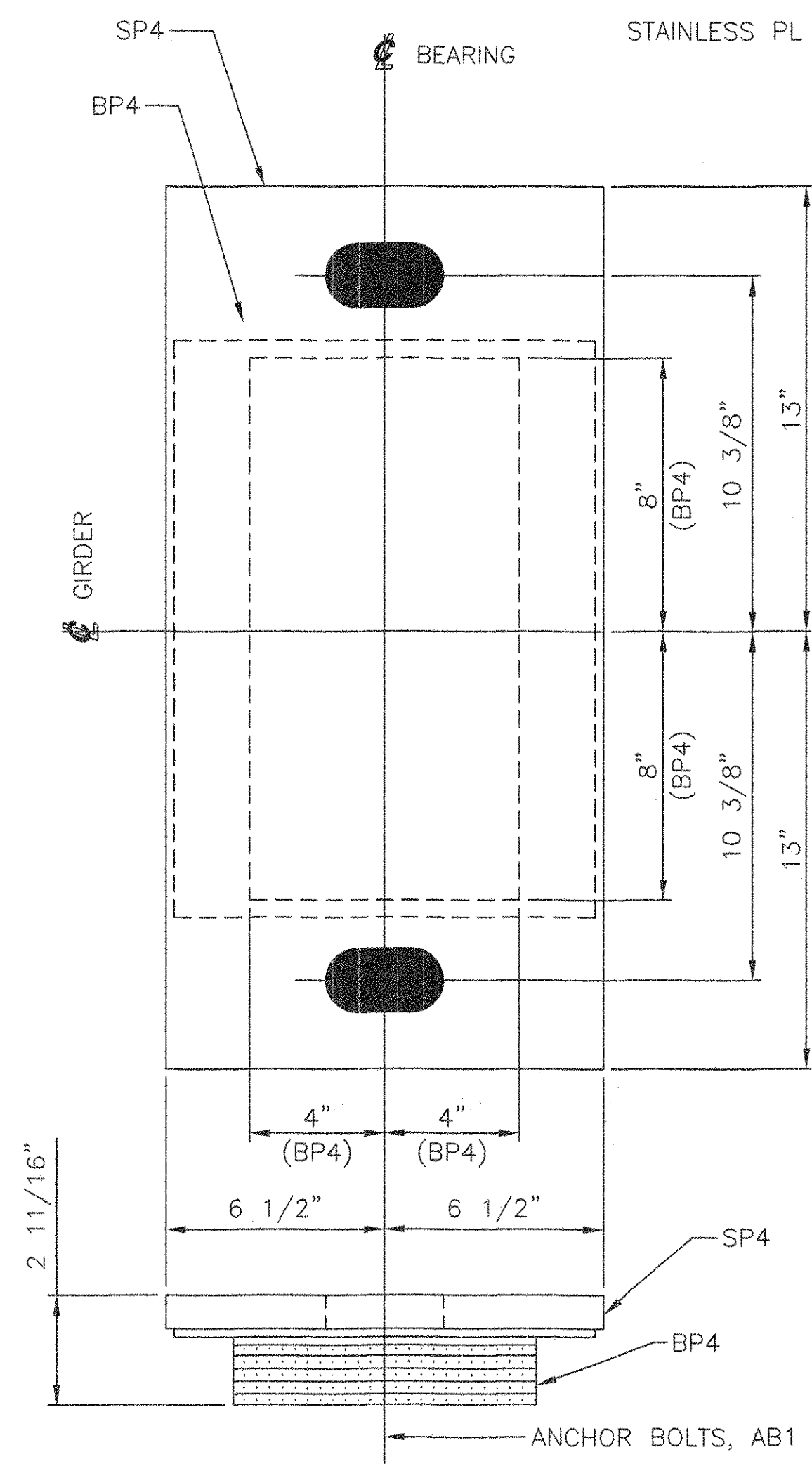


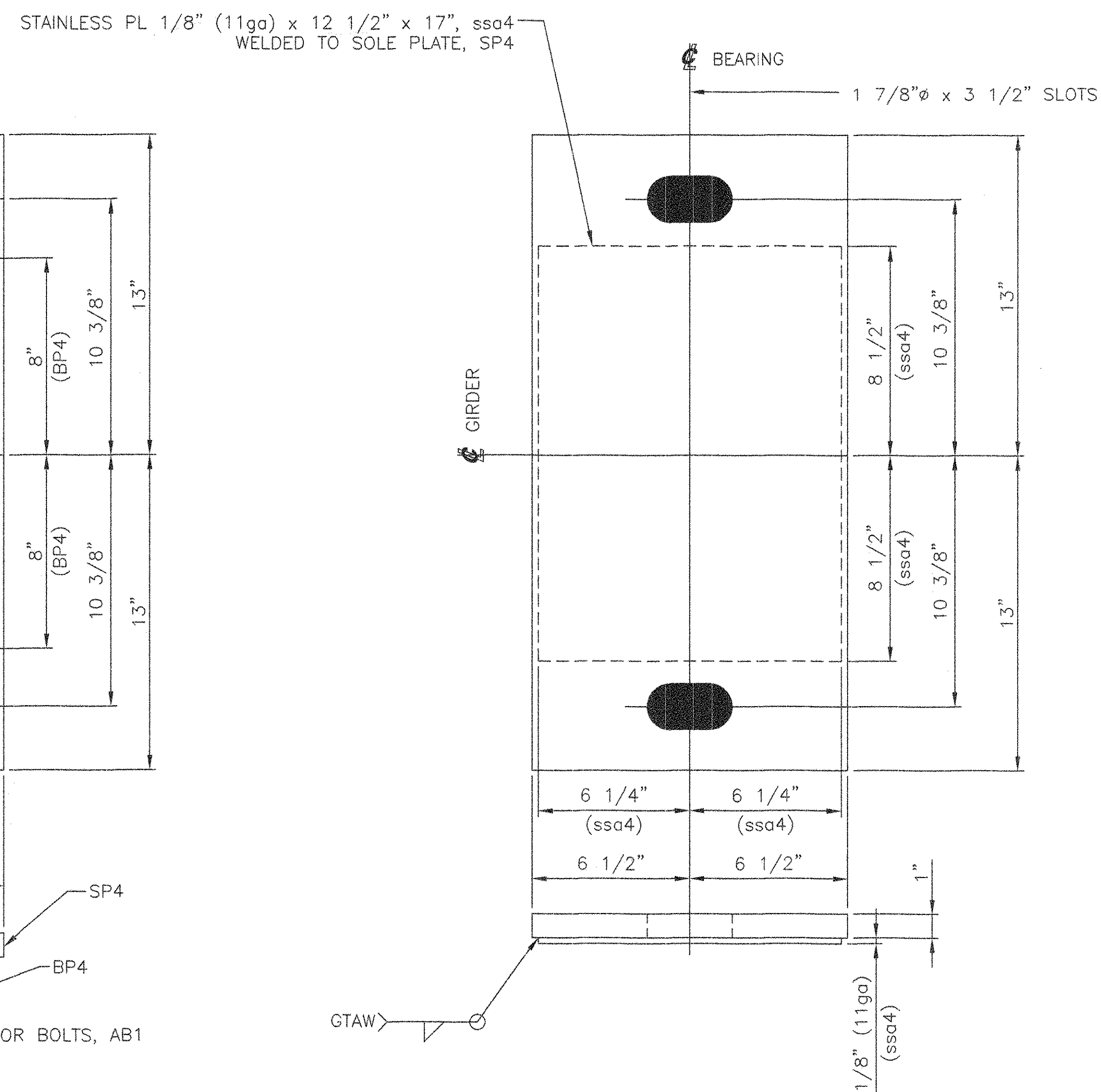
| MARK | QTY | DESCRIPTION | IN | 16ths | FAB MARK | MILL MARK | WEIGHT |
|-------|-----|------------------------------------|----|-------|----------|---------------|--------|
| EBA-3 | 6 | EXPANSION BEARING ASSEMBLIES | | | | | |
| SP4 | 6 | PL 1" x 13" | 26 | 0 | | METALIZED | 575 |
| | 6 | STAINLESS PL 1/8" (11ga) x 12 1/2" | 17 | 0 | ssa4 | A240 TYPE 304 | 50 |
| BP4 | 6 | PREF. PAD 1 1/2" x 8" | 16 | 0 | | | 59 |
| | 6 | PTFE 1/16" x 8" | 16 | 0 | tfe4 | D1457 | 4 |

TOTAL = 688



6 EXPANSION BEARING ASSEMBLIES, EBA-3

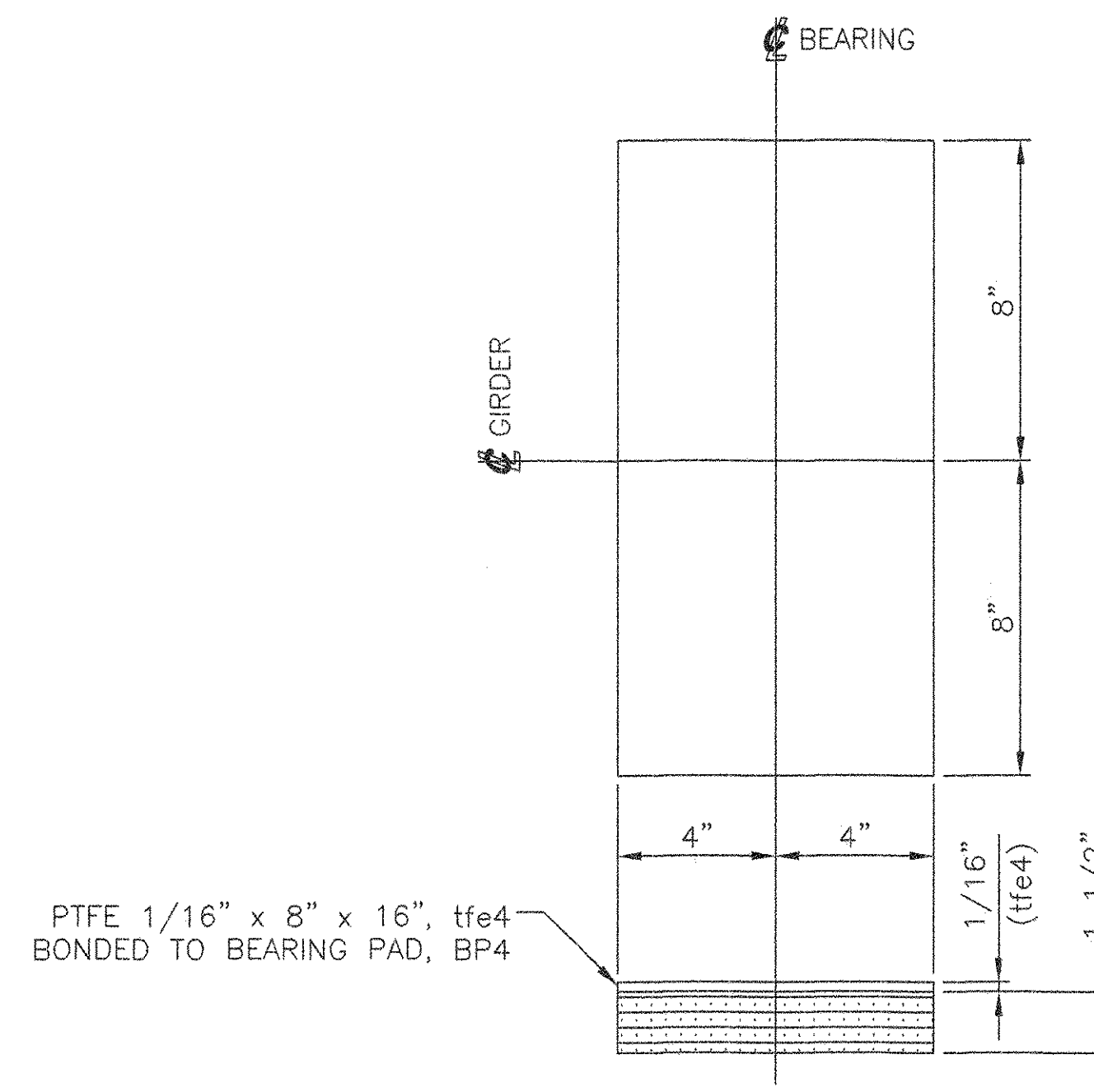
LOCATE AT
PIER 2, SPAN 2
GIRDERS 1 THRU 6



6 EXPANSION SOLE PLATES, SP4

PL 1" X 13" X 26"

(METALIZED)
USE WITH
EXPANSION BEARING ASSEMBLY, EBA-3



6 BEARING PADS, BP4

PREFORMED FABRIC PAD 1 1/2" X 8" X 16"
USE WITH
EXPANSION BEARING ASSEMBLY, EBA-3

SEE SHEET 1 FOR SHOP NOTES.

RECEIVED
CHK'D BY: *LC* OK'D BY: *AWC*
APR 03 2006
RESUBMIT: _____ APPROVED: *AWC*
BY: *AWC* DATE: *4.6.06*

STATE OF VERMONT
AGENCY OF TRANSPORTATION

VT 118
OVER THE TROUT RIVER
TOWN OF
MONTGOMERY, VERMONT
PROJECT NO. BHF-0283(8)S

COSMEC, INC. 70 SOUTH STREET
WALPOLE, MA. 02081

SCALE: NONE DRAWN BY: JEP CHECKED BY: PJM
SHEET 4 OF 7 DATE: 03/06 DATE: 03/06

COSMEC BEARINGS

| REV. | BY: | DATE: | CHK'D BY: | DATE: | CUSTOMER: | S.O. NUMBER: | DRAWING NUMBER: | REV. |
|------|-----|-------|-----------|-------|----------------|--------------|-----------------|------|
| - | | | | | A. L. ST. ONGE | 60530 | 4721 | 0 |