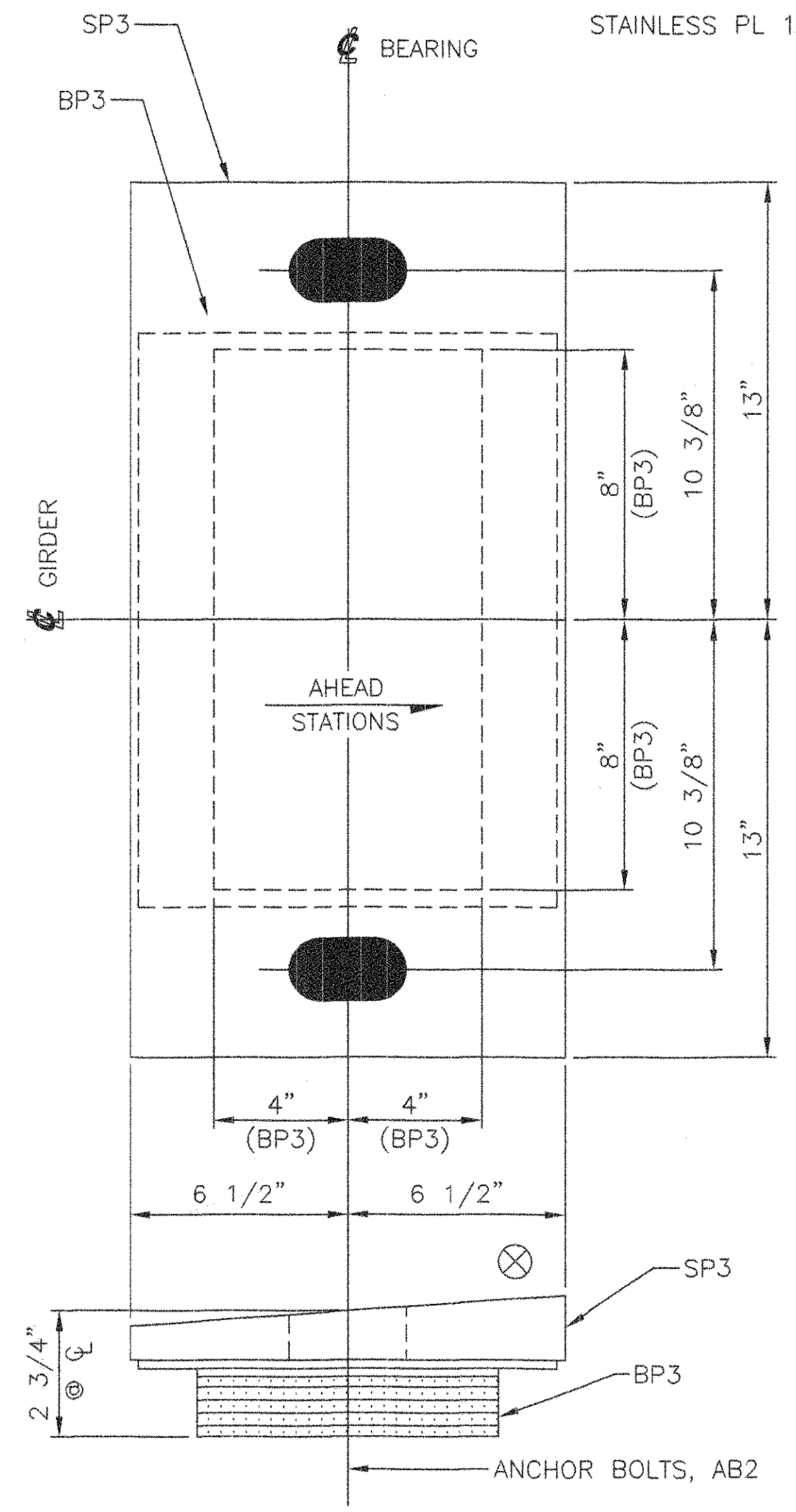


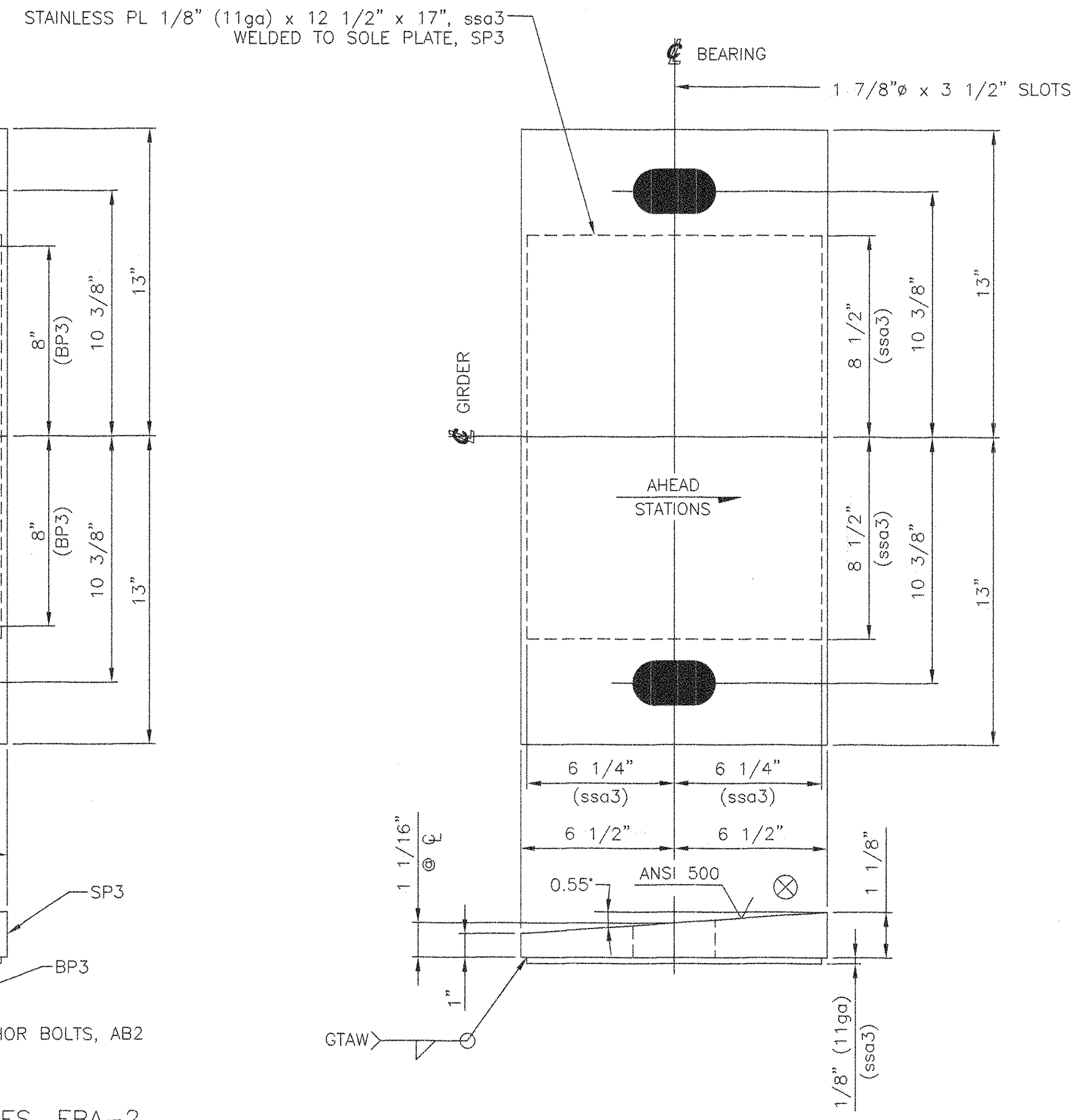
MARK	QTY	DESCRIPTION	IN	16ths	FAB MARK	MILL MARK	WEIGHT
EBA-2	6	EXPANSION BEARING ASSEMBLIES					
SP3	6	PL 1 1/8" x 13"	26	0		METALIZED	647
	6	STAINLESS PL 1/8" (11ga) x 12 1/2"	17	0	ssa3	A240 TYPE 304	50
BP3	6	PREF. PAD 1 1/2" x 8"	16	0			59
	6	PTFE 1/16" x 8"	16	0	tfe3	D1457	4

TOTAL = 760



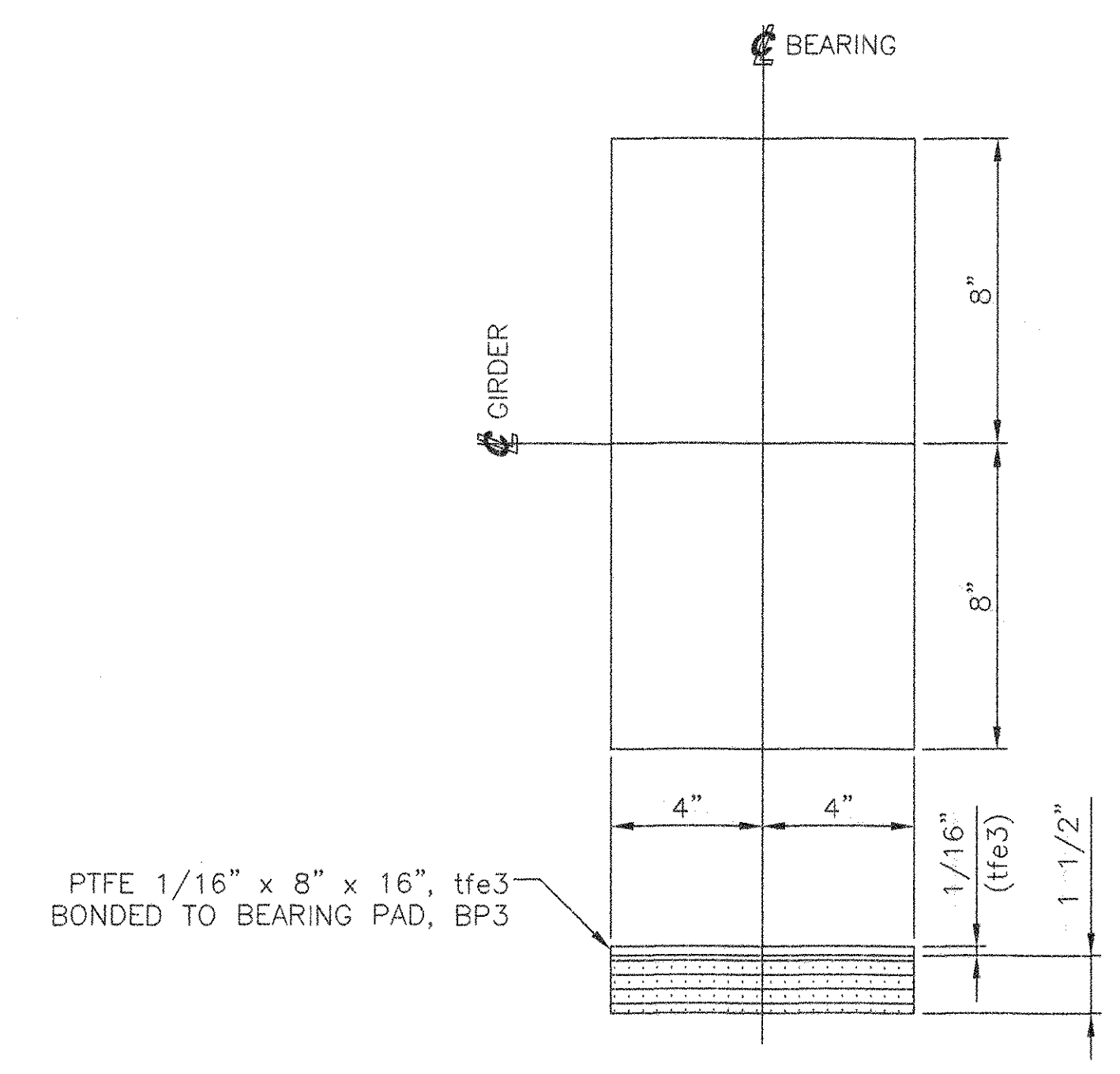
6 EXPANSION BEARING ASSEMBLIES, EBA-2

LOCATE AT
PIER 1, SPAN 2
GIRDERS 1 THRU 6



6 EXPANSION SOLE PLATES, SP3

PL 1 1/8" X 13" X 26"
(METALIZED)
USE WITH
EXPANSION BEARING ASSEMBLY, EBA-2



6 BEARING PADS, BP3
PREFORMED FABRIC PAD 1 1/2" X 8" X 16"
USE WITH
EXPANSION BEARING ASSEMBLY, EBA-2

SEE SHEET 1 FOR SHOP NOTES.

RECEIVED
CK'D BY: LB CK'D BY: [Signature]
APR 03 2006
RESUBMIT: APPROVED: [Signature]
BY: CWC DATE: 4-6-06

STATE OF VERMONT
AGENCY OF TRANSPORTATION
VT 118
OVER THE TROUT RIVER
TOWN OF
MONTGOMERY, VERMONT.
PROJECT NO. BHF-0283(8)S

COSMEC, INC. 70 SOUTH STREET
WALPOLE, MA. 02081

SCALE: NONE DRAWN BY: JEP CHECKED BY: PJM
SHEET 3 OF 7 DATE: 03/06 DATE: 03/06

COSMEC BEARINGS

REV.	BY:	DATE	CK'D BY:	DATE	CUSTOMER:	S.O. NUMBER	DRAWING NUMBER	REV.
-					A. L. ST. ONGE	60530	4720	0

048 B3