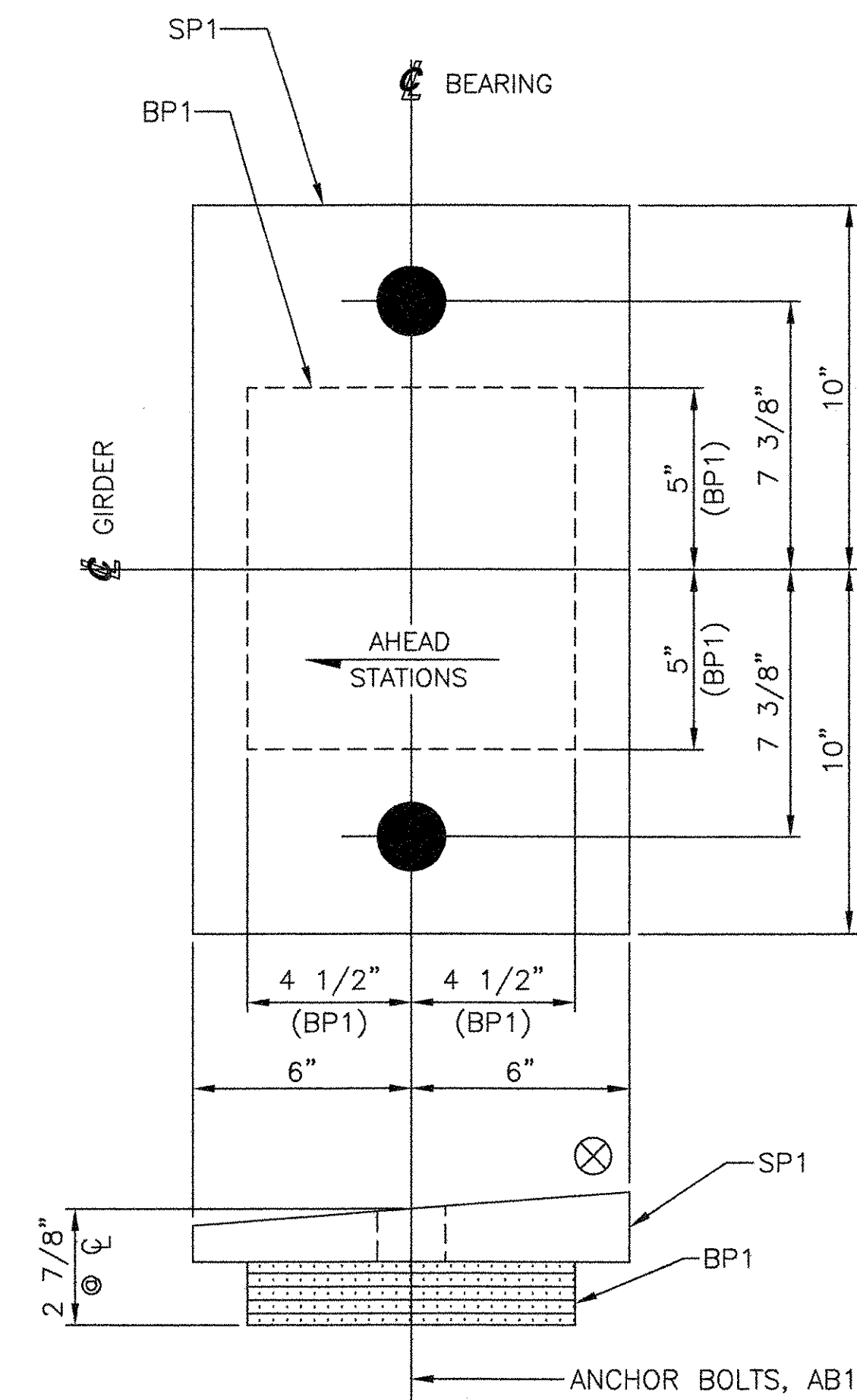


MARK	QTY	DESCRIPTION	IN	16ths	FAB MARK	MILL MARK	WEIGHT
FBA-1	6	FIXED BEARING ASSEMBLIES					
SP1	6	PL 1 1/4" x 12"	20	0		METALIZED	510
BP1	6	PREF. PAD 1 3/4" x 9"	10	0			49

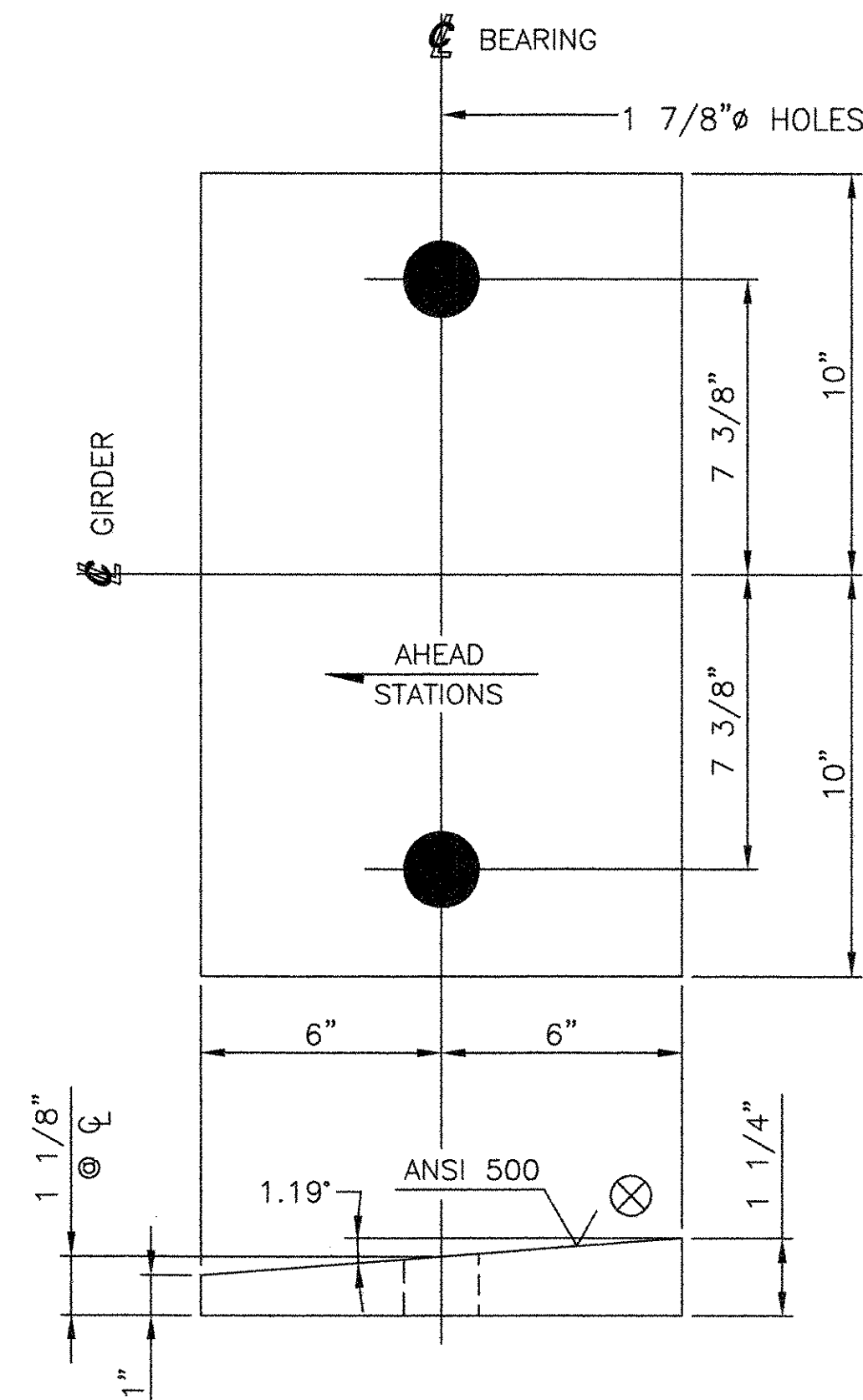
TOTAL = 559

**SHOP NOTES:**

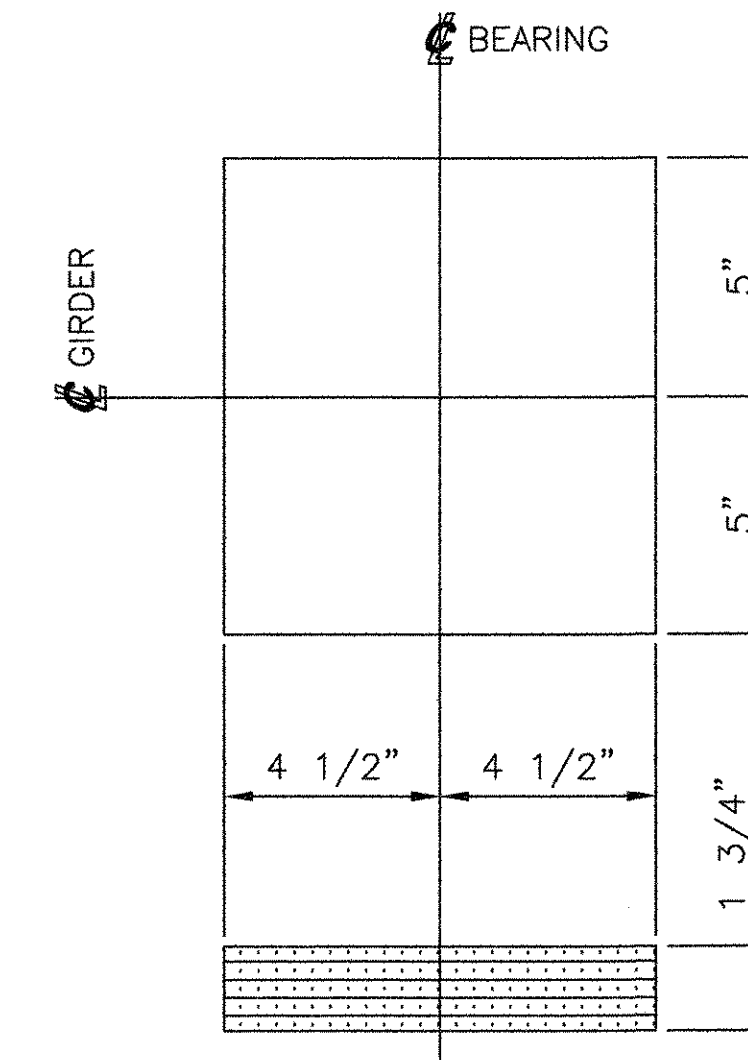
- SOLE PLATES: AASHTO M270, GR. 36, METALIZED.
- PREFORMED FABRIC PADS: IN ACCORDANCE WITH SECTION 731.01 OF THE 2001 VERMONT STATE STANDARD SPECIFICATIONS FOR CONSTRUCTION.
- STAINLESS STEEL: ASTM A240, TYPE 304, WITH A 10 RMS OR LESS FINISH ON SLIDING SURFACE.
- PTFE: ASTM D1457, VIRGIN, UNFILLED.
- ANCHOR BOLTS: F1554, GR. 55, GALVANIZED.
- PLATE WASHERS: ASTM A36 OR EQUIVALENT, GALVANIZED.
- MATERIAL NOTED AS M270, GR. 36 MAY BE AASHTO M270, GR. 36, ASTM A709, GR. 36 OR ASTM A36.
- MATERIAL NOTED AS GALVANIZED SHALL BE GALVANIZED IN ACCORDANCE WITH AASHTO M111 (ASTM A123) OR AASHTO M232 (ASTM A153) AS APPLICABLE.
- FABRICATION TOLERANCES SHALL BE IN ACCORDANCE WITH SECTION 531.04.(d) OF THE 2001 VERMONT STANDARD SPECIFICATION FOR CONSTRUCTION.
- ALL FREE EDGES OF PLATES TO BE METALIZED SHALL BE ROUNDED TO 1/16" RADIUS.
- SOLE PLATES SHALL BE BLAST CLEANED TO SSPC-SP5, "WHITE METAL" AND METALIZED TO A MINIMUM THICKNESS OF 6 MILS WITH 99.9% PURE ZINC IN ACCORDANCE WITH AWS C 2.18, AND SEALED WITH #90290 METCO ALS.
- COSMEC, INC. WILL BLAST THE MATERIAL AND APPLY THE REQUIRED COATING IN ACCORDANCE WITH THE MANUFACTURER'S RECOMMENDATIONS AND ALL APPLICABLE STANDARD SPECIFICATIONS AND SPECIAL PROVISIONS. COSMEC, INC. WILL PACKAGE AND LOAD THE BEARINGS FOR SHIPMENT IN SUCH A MANNER AS TO INSURE NO DAMAGE IS DONE TO THE COATING. ANY DAMAGE TO THE COATING IN THE FIELD IS THE SOLE RESPONSIBILITY OF THE CONTRACTOR AND IS TO BE REPAIRED AT THE CONTRACTOR'S EXPENSE.
- WHEN WELDING SOLE PLATE TO GIRDER FLANGE, USE TEMPERATURE INDICATING WAX PEN OR OTHER SUITABLE MEANS TO INSURE THAT THE TEMPERATURE OF THE BEARING DOES NOT EXCEED 250°F. TEMPERATURES ABOVE THIS MAY DAMAGE ELASTOMER.
- ALL SURFACES OF PLATES SHALL BE SMOOTH AND STRAIGHT.
- SHOP TO MARK HIGH SIDE OF PLATE.
- SHIM PLATES ARE NOT REQUIRED PER THE CONTRACTOR.
- COSMEC, INC. REPRESENTATIVE: MR. MATT McANDREWS (508) 668-6600



**6 FIXED BEARING ASSEMBLIES, FBA-1**  
LOCATE AT  
ABUTMENT 1, SPAN 1  
GIRDERS 1 THRU 5



**6 FIXED SOLE PLATES, SP1**  
PL 1 1/4" X 12" X 20"  
(METALIZED)  
USE WITH  
FIXED BEARING ASSEMBLY, FBA-1



**6 BEARING PADS, BP1**  
PREFORMED FABRIC PAD 1 3/4" X 9" X 10"  
USE WITH  
FIXED BEARING ASSEMBLY, FBA-1

RECEIVED  
MAY 18 2006  
APPROVED  
DATE

STATE OF VERMONT  
AGENCY OF TRANSPORTATION  
VT 118  
OVER THE TROUT RIVER  
TOWN OF  
MONTGOMERY, VERMONT  
PROJECT NO. BHF-0283(8)S

**COSMEC, INC.** 70 SOUTH STREET  
WALPOLE, MA. 02081  
SCALE: NONE DRAWN BY: JEP CHECKED BY: PJM  
SHEET 1 OF 7 DATE: 03/06 DATE: 03/06

REV.	REVISED ST. STEEL SPEC. PER APPROVED AS NOTED DRAWING.	BY:	DATE:	CHK'D BY:	DATE:	CUSTOMER:	S.O. NUMBER:	DRAWING NUMBER:	REV.
1		MM	4/06	MCM	4/06	A. L. ST. ONGE	60530	4718	1

046 B12