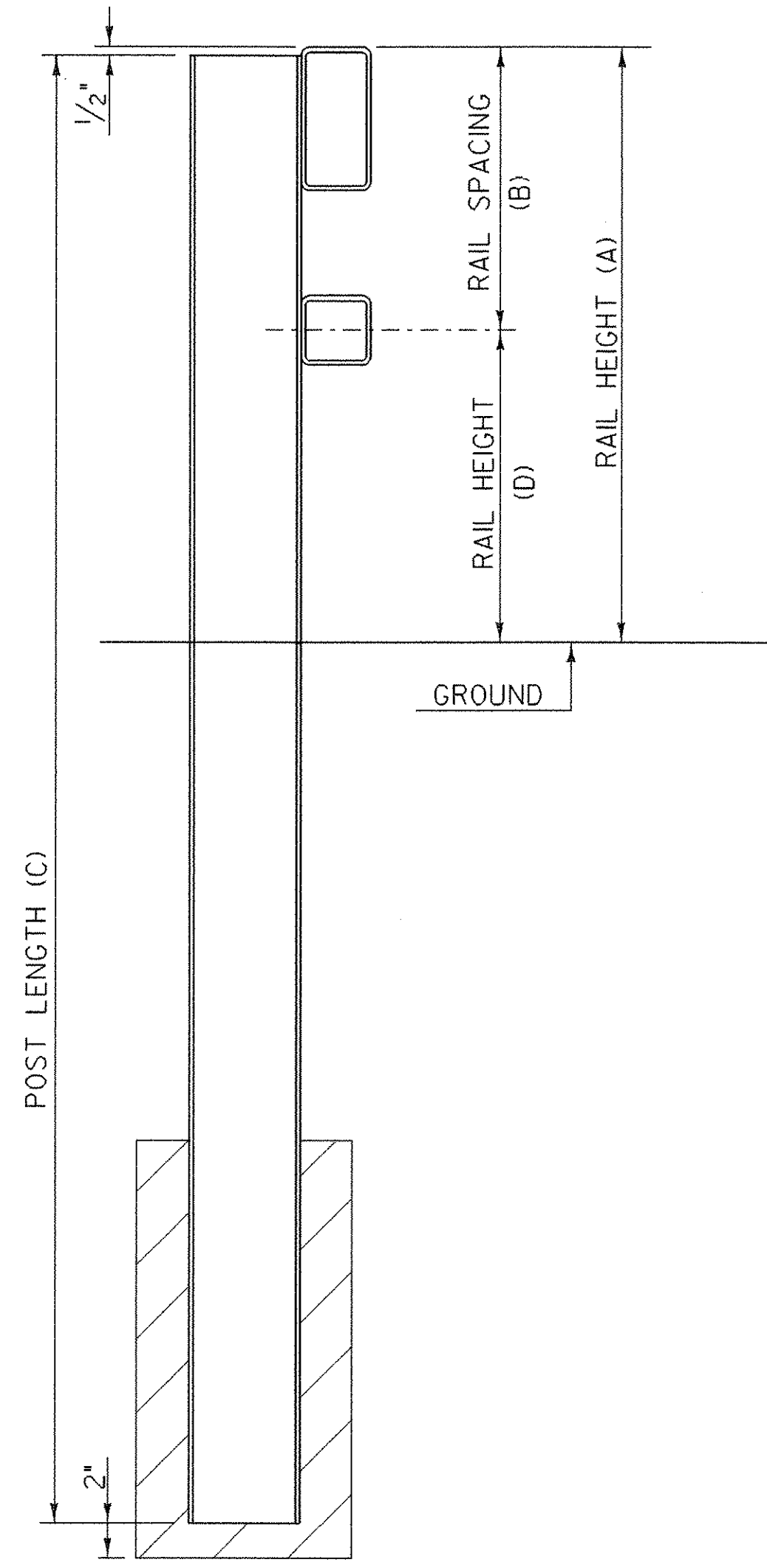
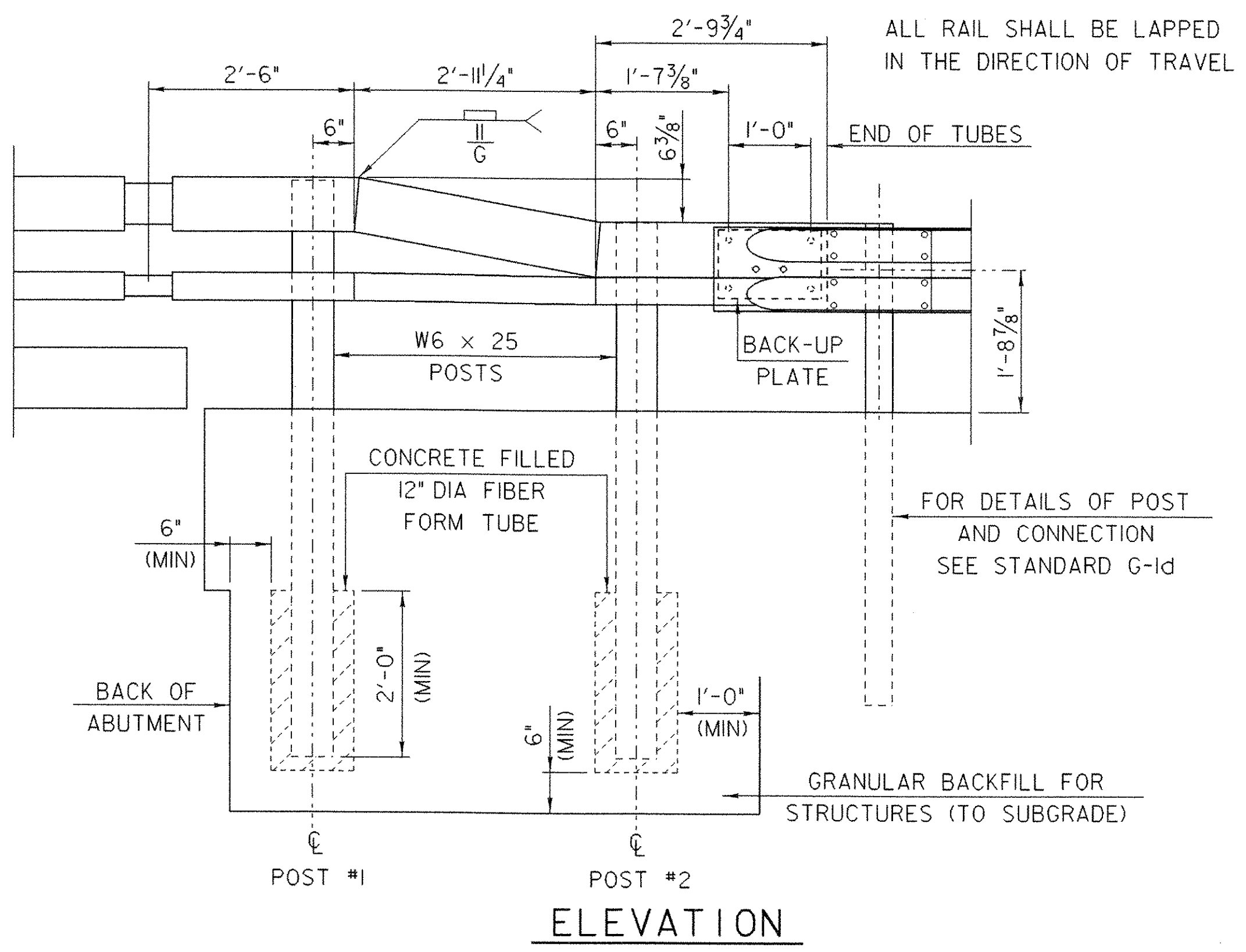
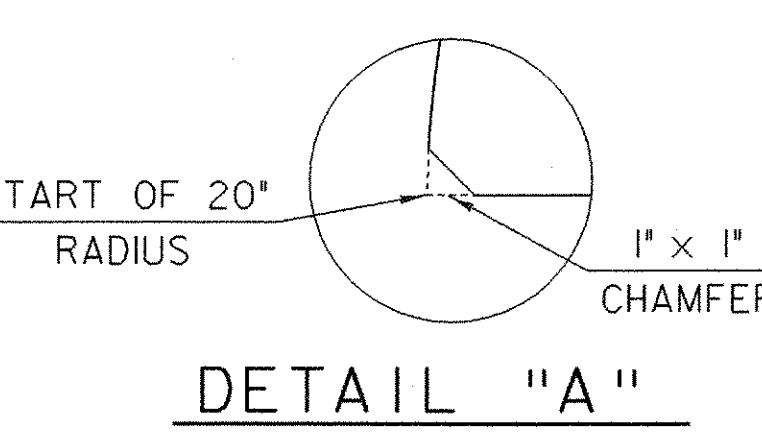


**RAILING TRANSITION ELEVATION**

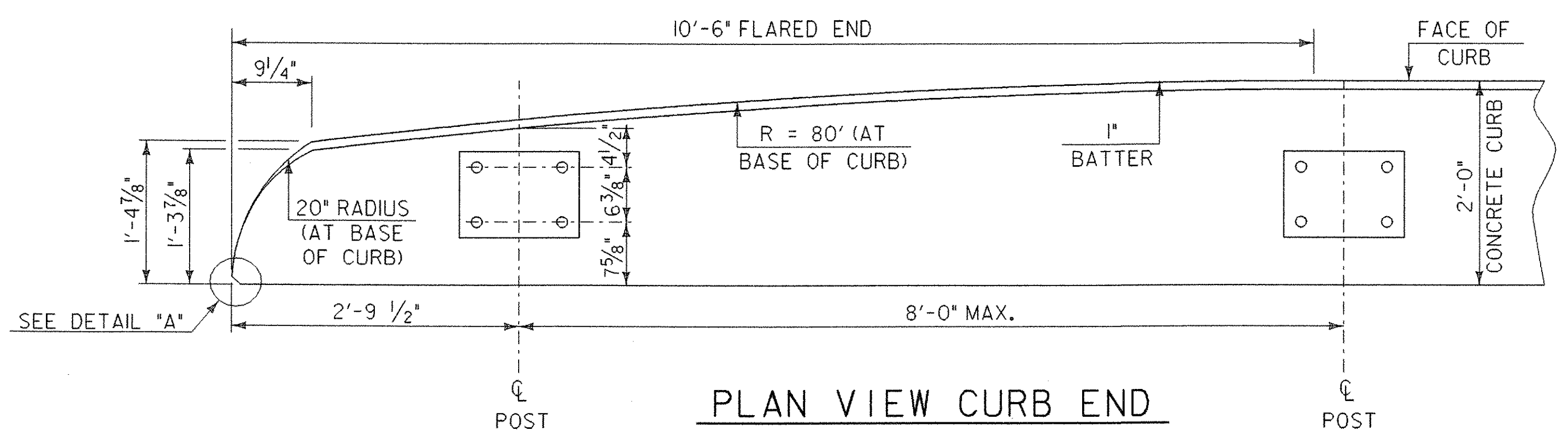
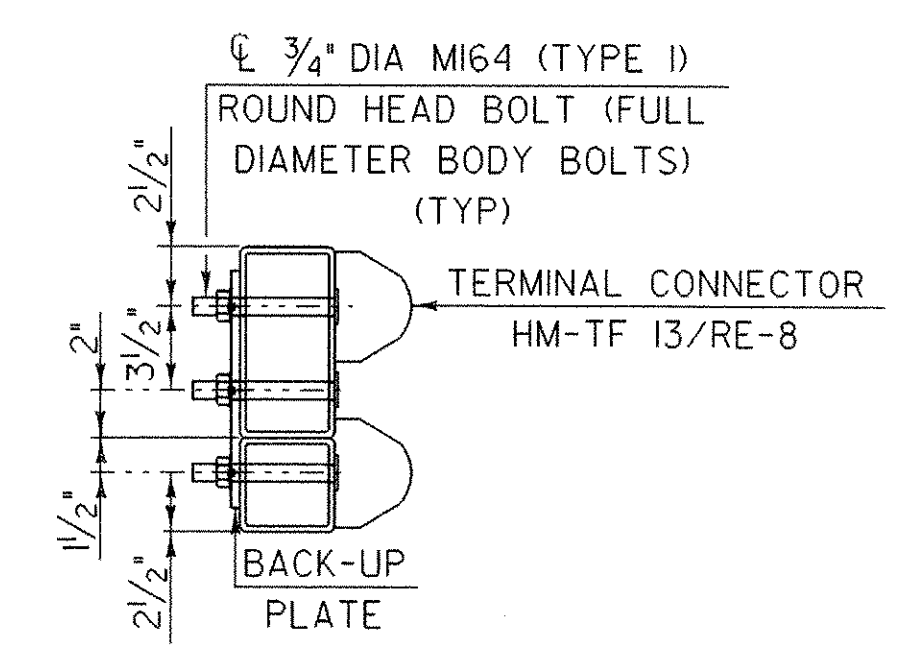


**TYPICAL SECTION**

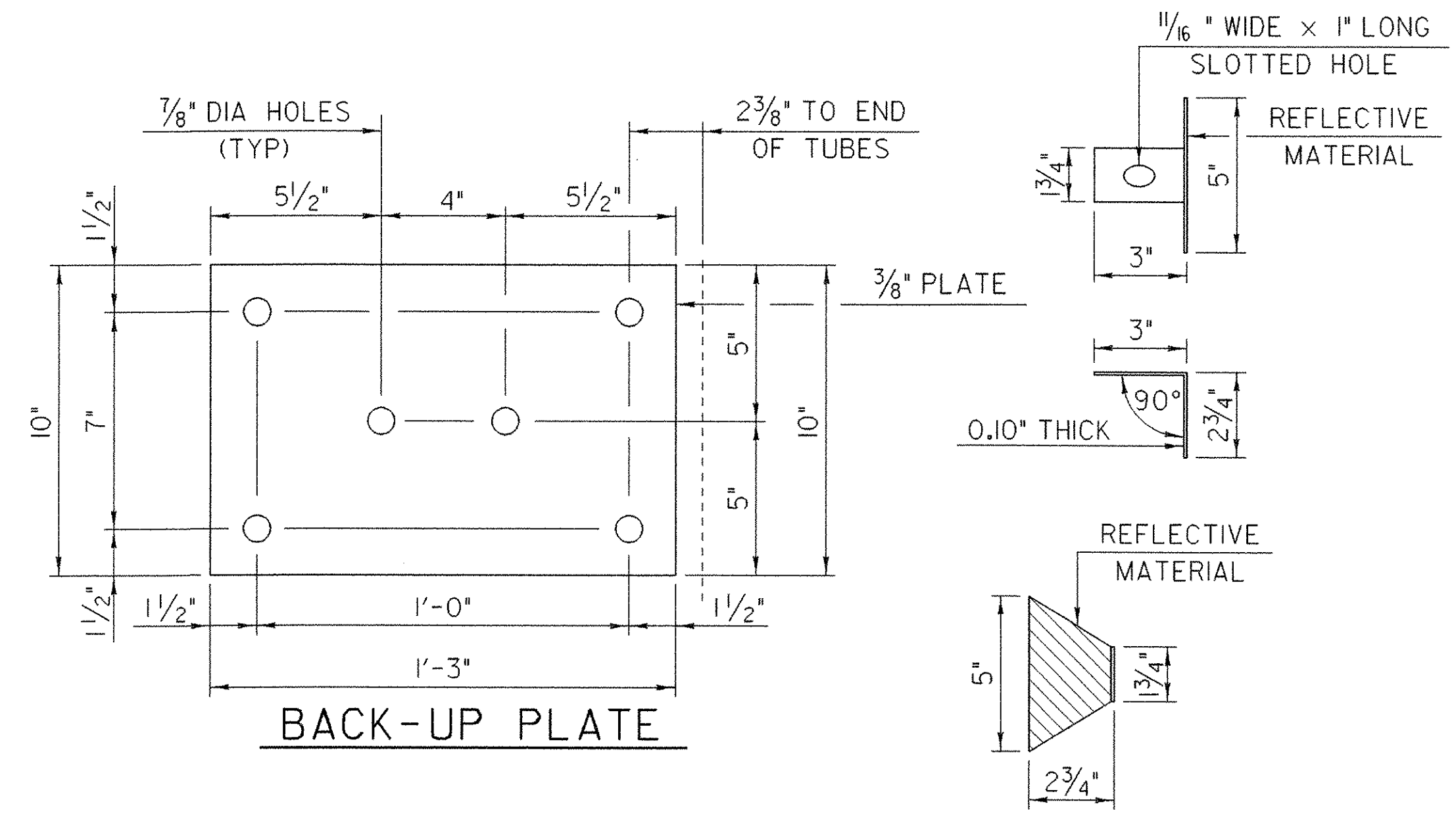


**DETAIL "A"**

**SECTION THROUGH GUARD RAIL CONNECTION AT TERMINAL CONNECTOR**

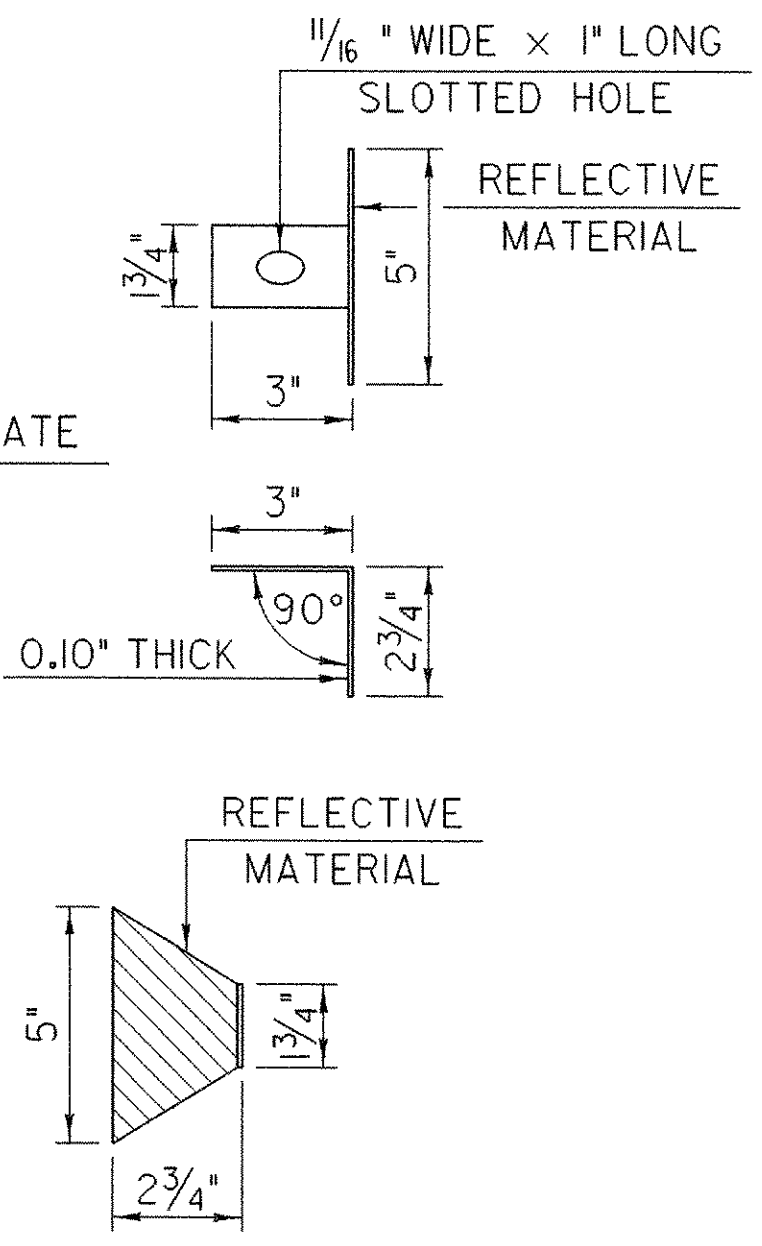


**PLAN VIEW CURB END**



**BACK-UP PLATE**

**DELINEATION DEVICE DETAILS**



- Notes:**
1. REFER TO SHEET 32 FOR ADDITIONAL DETAILS, NOTES AND MATERIAL SPECIFICATIONS.
  2. TO FACILITATE FIELD FIT - UP OF THE TRANSITION RAILING, POSTS SHALL BE SET LOOSELY INTO FIBER FORM TUBES WHILE TRANSITION PARTS ARE BEING ASSEMBLED. POST HOLES SHALL BE BACKFILLED WITH A CONCRETE MIX APPROVED BY THE ENGINEER. PAYMENT FOR COMPONENTS, INCLUDING BACKUP PLATE AND END TERMINAL CONNECTOR FOR GUARD RAIL, AUGERING, FIBER FORM TUBES AND CONCRETE, AND INSTALLATION SHALL BE CONSIDERED INCIDENTAL TO BRIDGE RAILING, N.E.T.C. 2 RAIL.
  3. THE REFLECTORIZED ALUMINUM DELINEATION IS TO BE ERRECTED EVERY 30' (OR CLOSEST POST) WITH A 5/8" DIAMETER BOLT. DELINEATORS SHALL MEET SPECIFICATION REQUIREMENTS FOR ASTM B209 ALLOY 5052-H32.
  4. REFLECTIVE MATERIAL SHALL MEET REQUIREMENTS OF SUBSECTION 750.08 AND SHALL BE OF ENCAPSULATED LENS SILVER OR AMBER. AMBER IS TO BE INSTALLED ON THE DRIVER'S LEFT AND SILVER ON THEIR RIGHT.
  5. ON BRIDGES WITH A SIDEWALK, DELINEATORS ARE NOT TO BE INSTALLED ON THE SIDEWALK SIDE OF THE BRIDGE (I.E. DELINEATORS INSTALLED ONLY ON THE CURB SIDE AND ON THE APPROACH ON THE CURB SIDE). PAYMENT SHALL BE INCIDENTAL TO ALL OTHER ITEMS.
  6. ALL APPROACH RAIL SPLICES SHALL BE LAPPED IN THE DIRECTION OF TRAFFIC FLOW.
  7. SEE STANDARD G-1 AND G-1d FOR ADDITIONAL INFORMATION.

DATE: 04/16/01 FLENAME: \$FILES

POST NUMBER	RAIL HEIGHT (A)	RAIL SPACING (B)	POST LENGTH (C)	RAIL HEIGHT (D)
1	2'-10"	1'-4"	7'-0"	1'-6"
2	2'-3 5/8"	10"	6'-5"	1'-5 5/8"

**TYLIN INTERNATIONAL**

**STATE OF VERMONT AGENCY OF TRANSPORTATION**

Town Of **MONTGOMERY** Bridge No. **21**

Highway No. **VT 118** Log Sta.

**VT 118 OVER TROUT RIVER** Surv. Sta.

**GUARDRAIL APPROACH SECTION - N.E.T.C. 2 RAIL**

Designed By **J Howe** Drawn By **P Donovan**

Checked By **R Hebert** Date **04/16/01** Bridge Design Supervisor **R.WHITCOMB** Date

PROJECT **MONTGOMERY** PROJECT NO. **BHF 0283(8)S**

I.G.C. Info. **ZC316-BR2-97.DGN**

Bridge Sheet No.  Sheet **33** of **45**