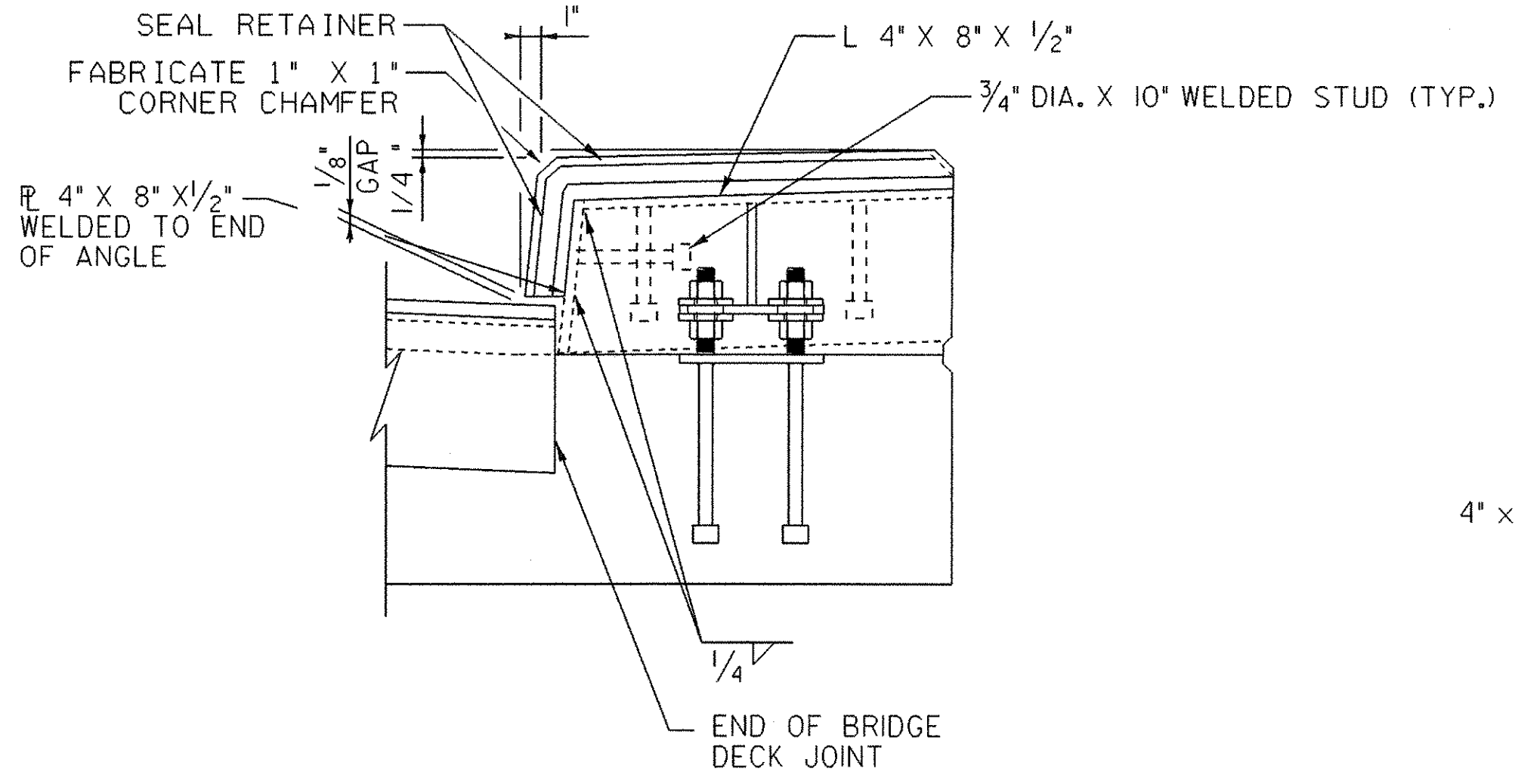


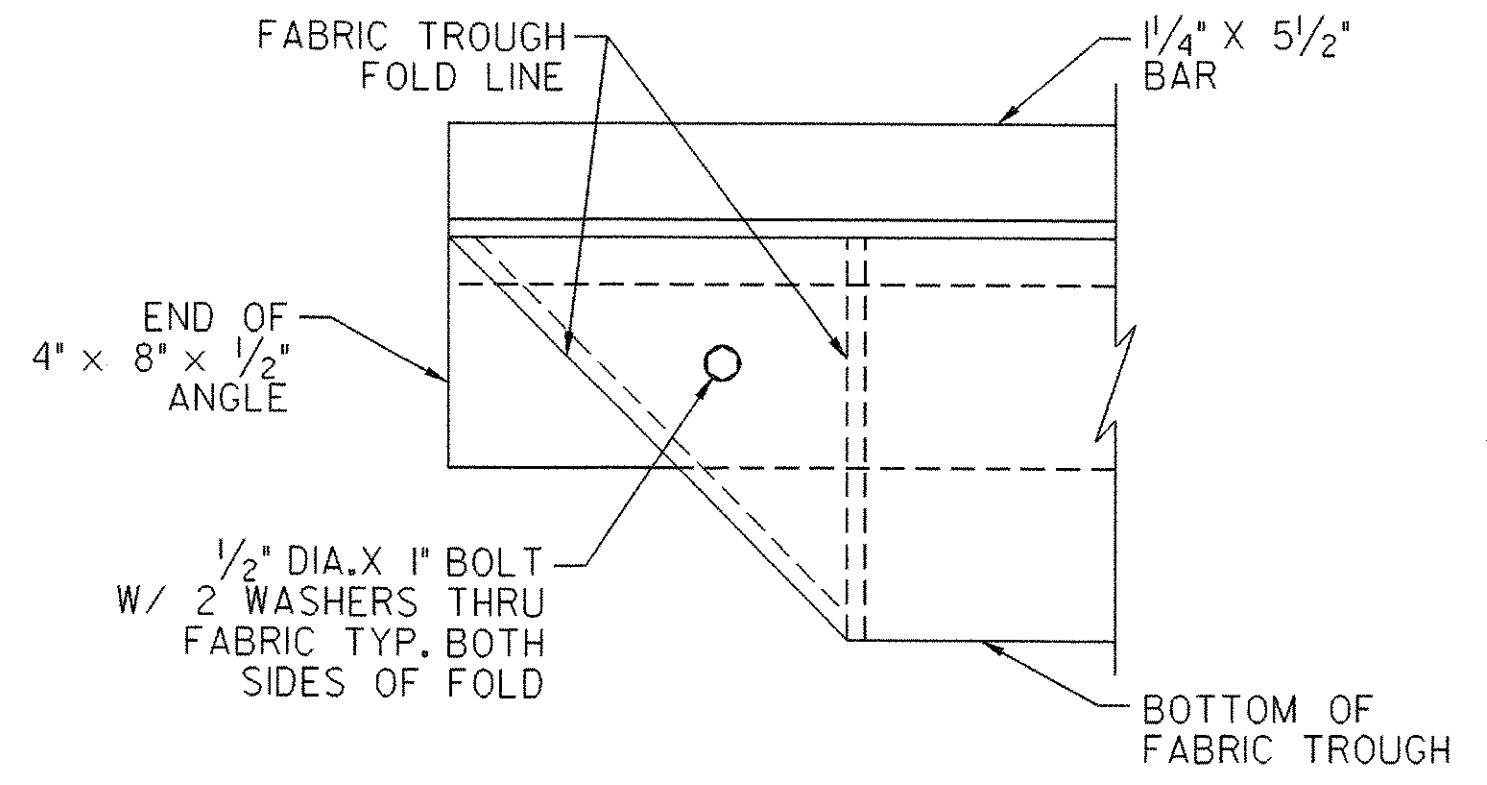
EXPANSION JOINT PLAN AT CURB  
SCALE: 3/4" = 1'-0"

EXPANSION JOINT PLAN DETAIL  
SCALE: 3/4" = 1'-0"

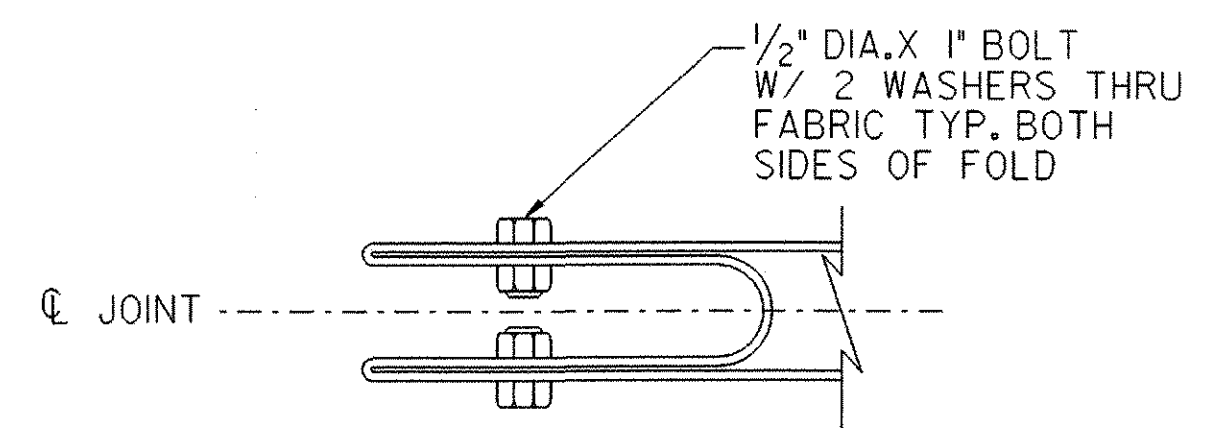
NOTE: CURB JOINT NOT SHOWN FOR CLARITY. SEE "EXPANSION JOINT PLAN AT CURB" FOR DETAILS AT CURBS.



SECTION A-A  
SCALE: 1 1/2" = 1'-0"



FOLDED TROUGH END DETAILS  
NOT TO SCALE



- NOTES:
1. EXPANSION JOINT ARMOR AT CURB JOINT SHALL BE FABRICATED AS A SINGLE UNIT EACH SIDE OF JOINT.
  2. REFERENCE SHEET 24 FOR ADDITIONAL CURB DETAILS.
  3. MOVEMENT RATING OF SEAL SHALL BE 2 1/2"
  4. PREFORMED NEOPRENE JOINT SEALER SHALL BE FABRICATED AS ONE CONTINUOUS UNIT. DIRECTIONAL CHANGE IN SEAL MAY BE FABRICATED USING A FACTORY MOLDED UNIT OR A VULCANIZED SPLICE.

NOTE: ALL BOLTS AND RELATED HARDWARE SHALL BE ASTM A-307 AND SHALL BE GALVANIZED IN ACCORDANCE WITH ASTM A-153 (AASHTO M 232M/232).

TYLIN INTERNATIONAL

<b>STATE OF VERMONT AGENCY OF TRANSPORTATION</b>			
Town Of	MONTGOMERY	Bridge No.	21
Highway No.	VT 118	Log Sta.	
		Surv. Sta.	
VT 118 OVER TROUT RIVER			
EXPANSION JOINT PLAN			
Designed By	J. Howe	Drawn By	J. Davis
Checked By	R. Hebert	Date	9/4/01
		Bridge Design Supervisor	R. WHITCOMB Date
PROJECT	MONTGOMERY	PROJECT NO.	BHF 0283(8)S
iparm	zc316e/jl.1		zc316e/jl.dgn
Bridge Sheet No.		Sheet	27 of 45