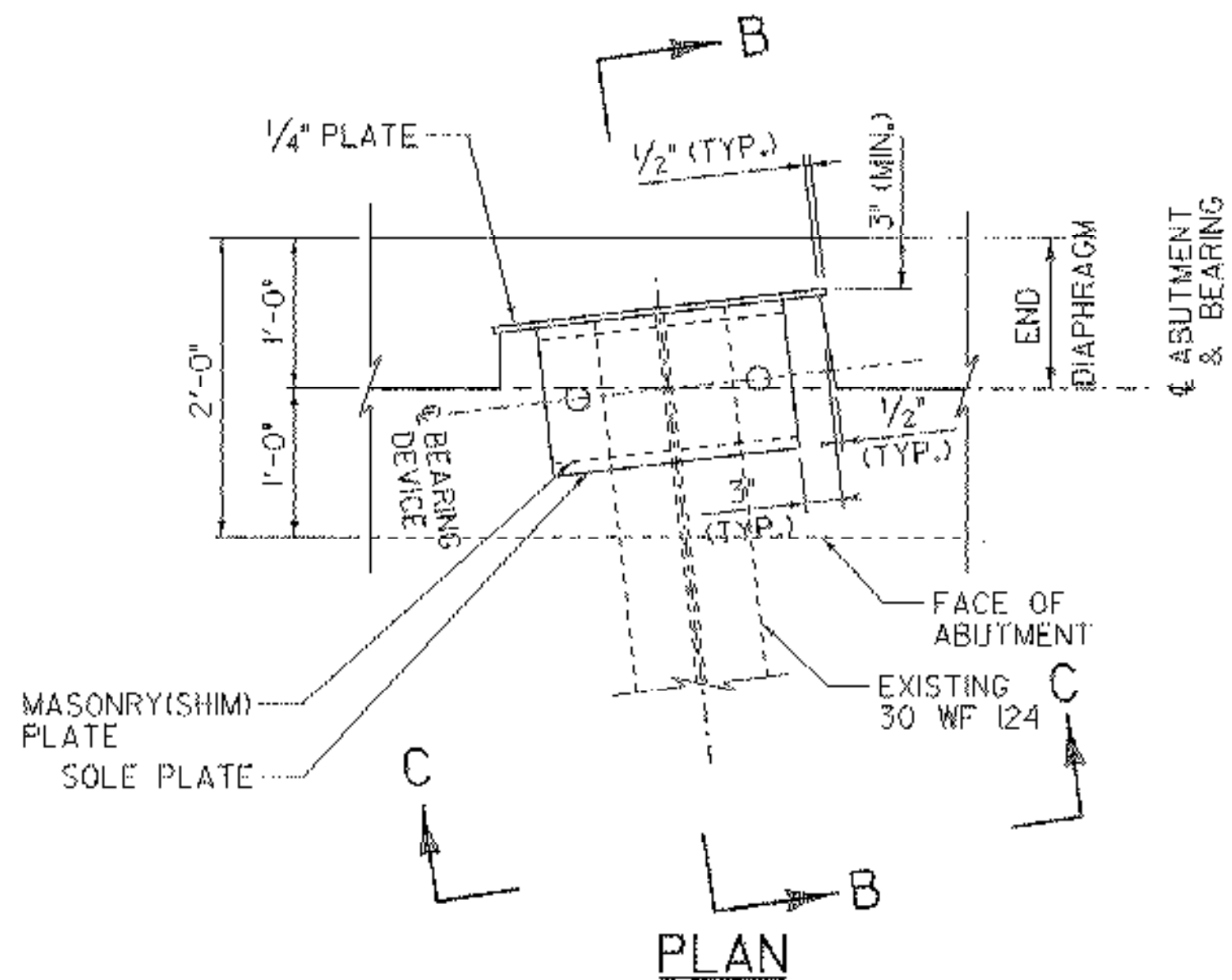
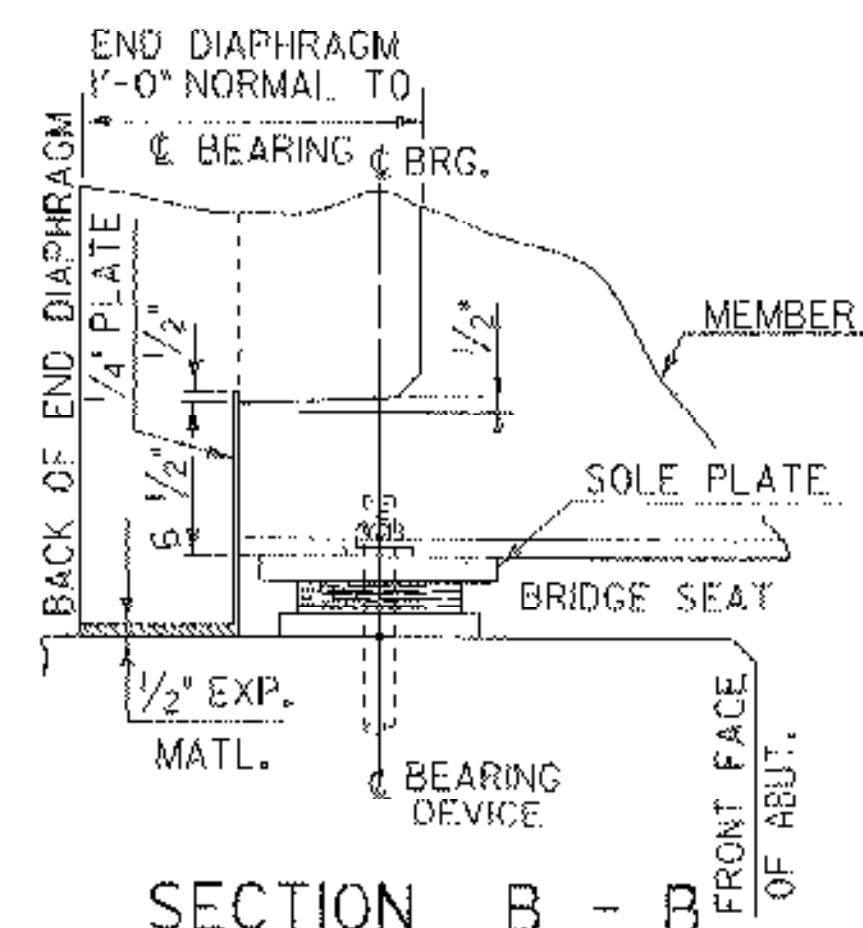


- NOTES:
1. DECK AND APPROACH SLAB REINFORCING NOT SHOWN FOR CLARITY.
  2. PLACE 2-EA505 BAR DOWELS THROUGH EXISTING HOLES IN BEAM ENDS. CENTER #5 BAR DOWEL ON GIRDER.

**SECTION A-A**  
SCALE: 3/4" = 1'-0"

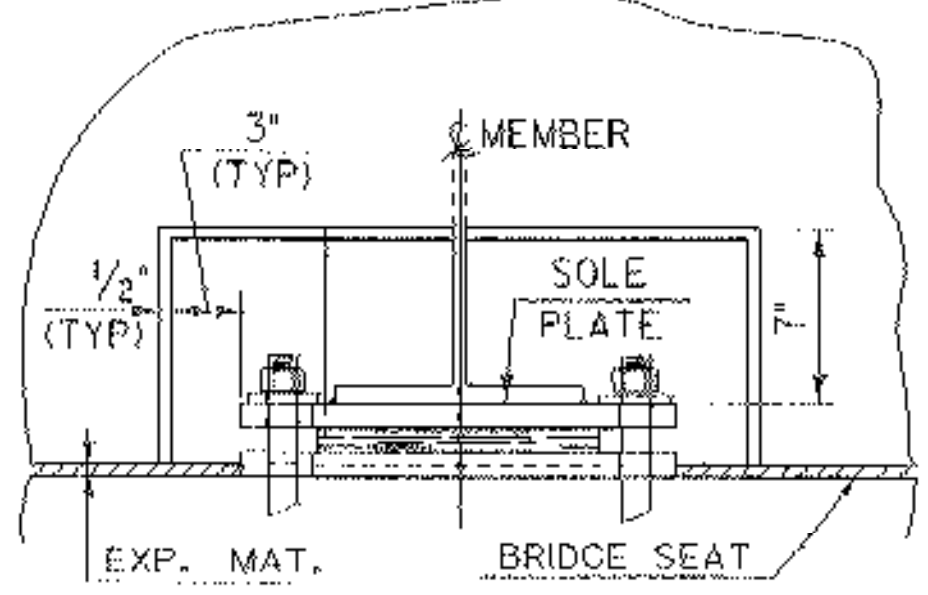


**PLAN**

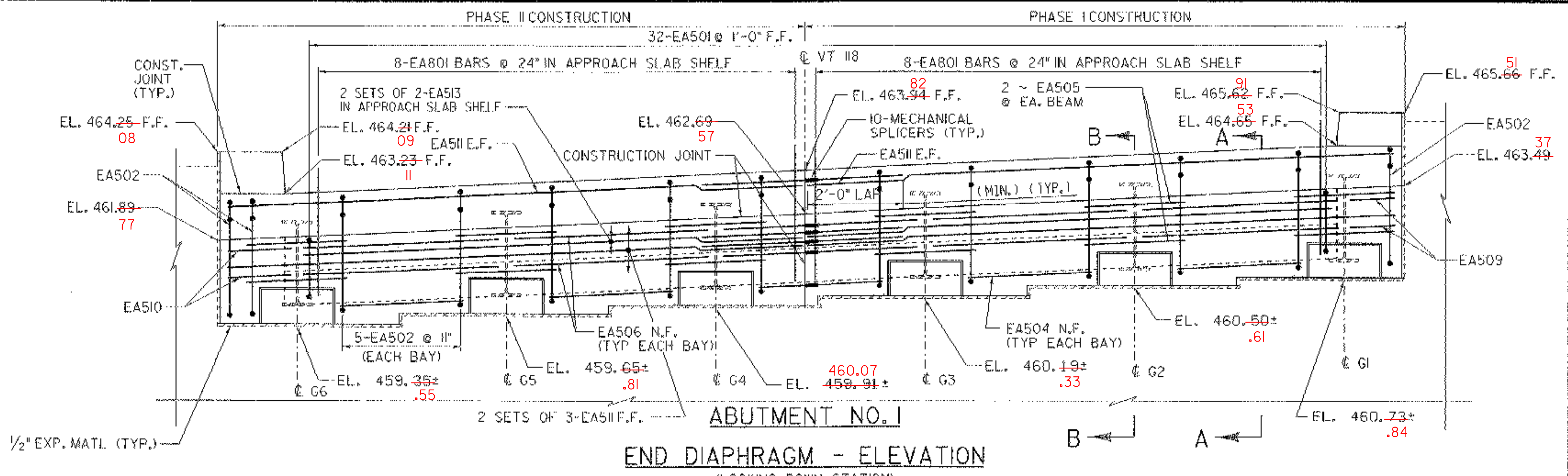


**SECTION B-B**

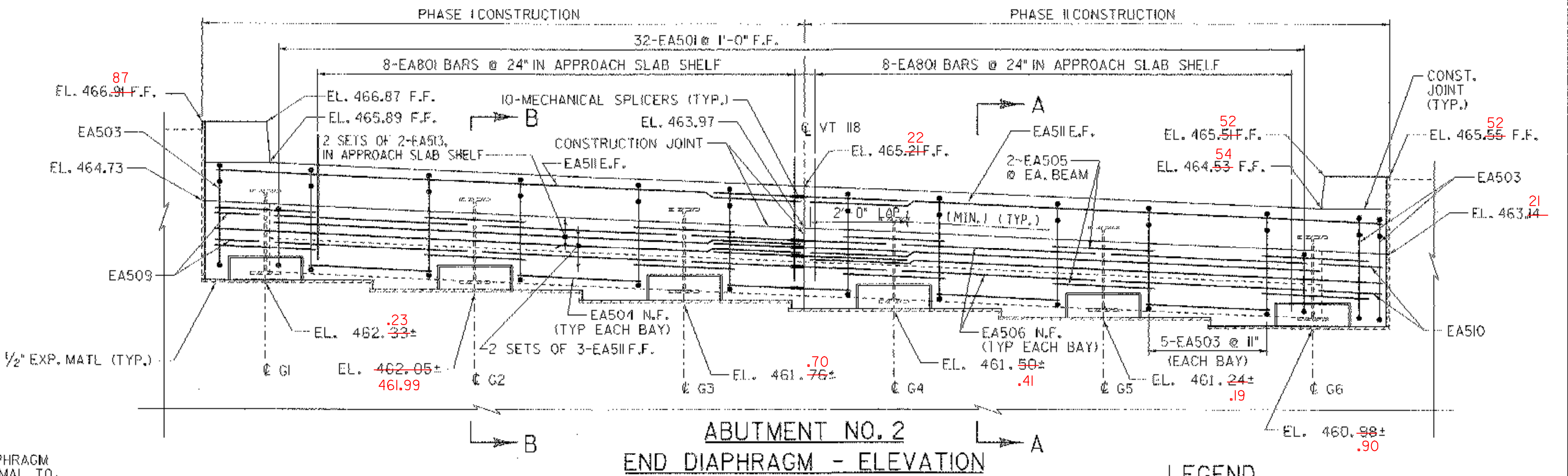
SCALE: 1" = 1'-0"



**VIEW C-C**

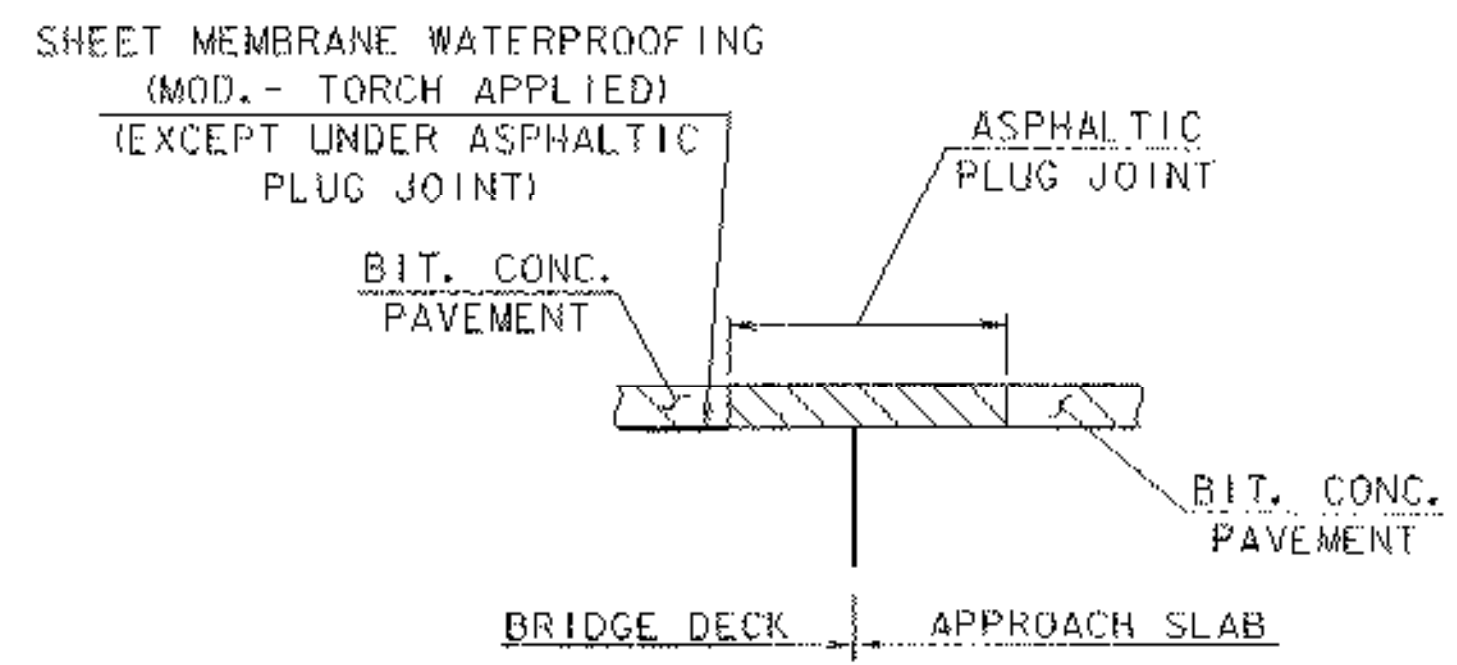


**ABUTMENT NO. 1  
END DIAPHRAGM - ELEVATION**  
(LOOKING DOWN STATION)  
SCALE: 1/2" = 1'-0"



**ABUTMENT NO. 2  
END DIAPHRAGM - ELEVATION**  
(LOOKING UP STATION)  
SCALE: 1/2" = 1'-0"

**LEGEND**  
E.F. = EACH FACE  
F.F. = FAR FACE  
N.F. = NEAR FACE



**ASPHALTIC PLUG  
JOINT DETAIL**  
NOT TO SCALE

**TYLIN INTERNATIONAL**

<b>STATE OF VERMONT AGENCY OF TRANSPORTATION</b>			
Town Of	<b>MONTGOMERY</b>	Bridge No.	21
Highway No.	<b>VT 118</b>	Log Sta.	
		Surv. Sta.	
<b>VT 118 OVER TROUT RIVER END DIAPHRAGM DETAILS</b>			
Designed By	<b>J. HOWE</b>	Drawn By	<b>P. Danovan</b>
Checked By	<b>R. Hebert</b>	Date	<b>08/31/01</b>
		Bridge Design Supervisor	<b>R. WHITCOMB</b>
		Date	
PROJECT	<b>MONTGOMERY</b>	PROJECT NO.	<b>BHF 0283(8)S</b>
I.C. Into.			<b>2C386DLDGN</b>
Bridge Sheet No.		Sheet	25 of 45

REVISED 3/13/06