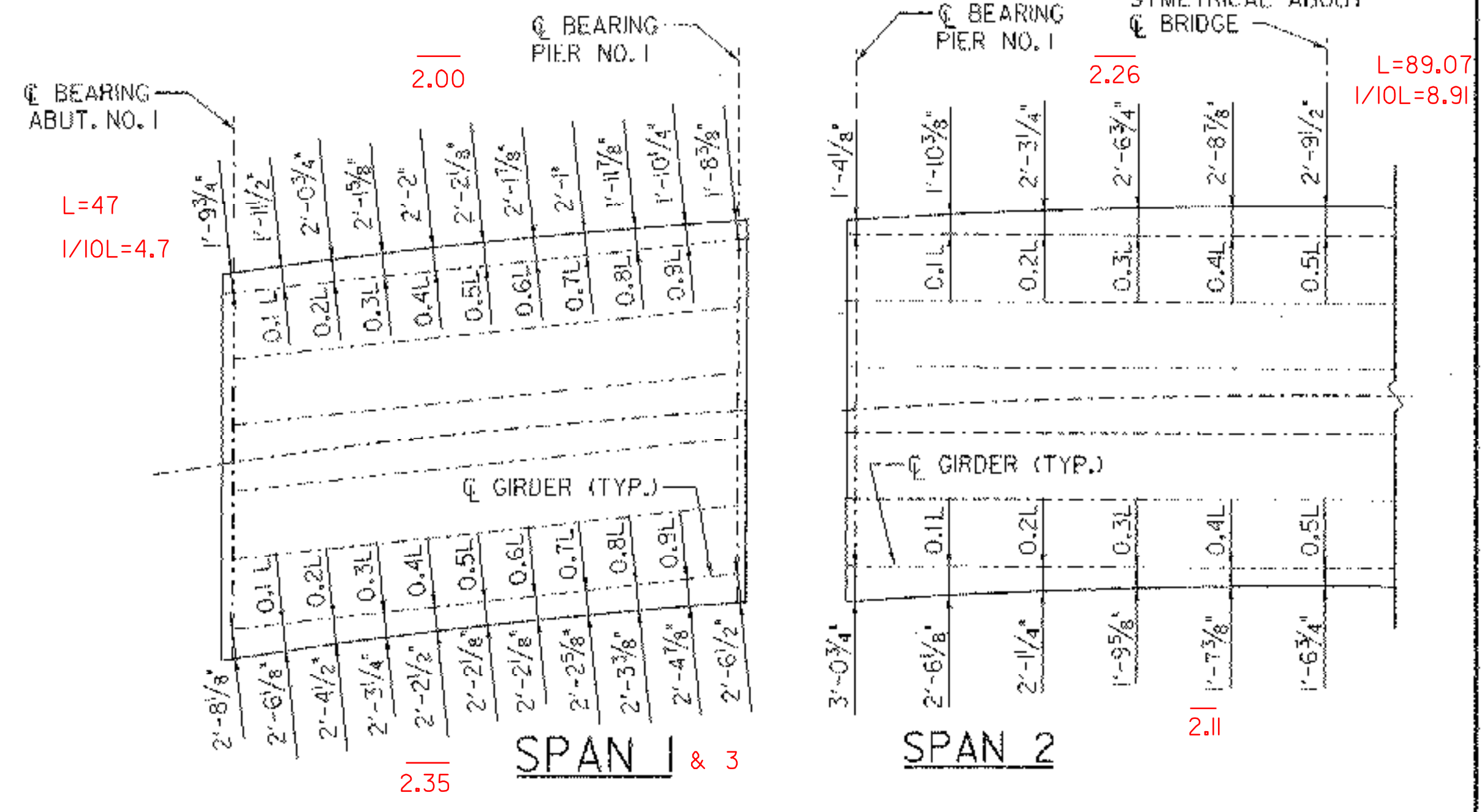
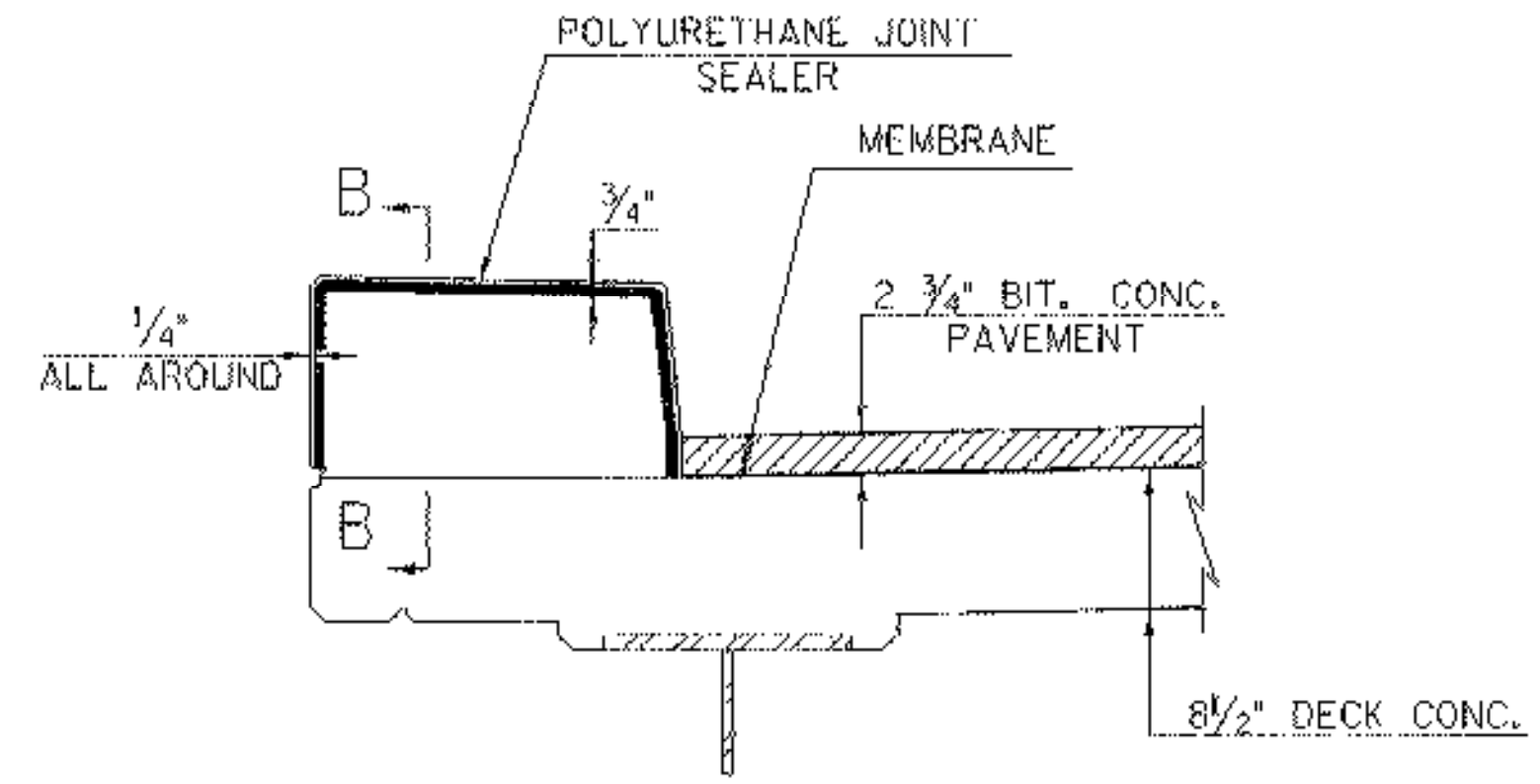


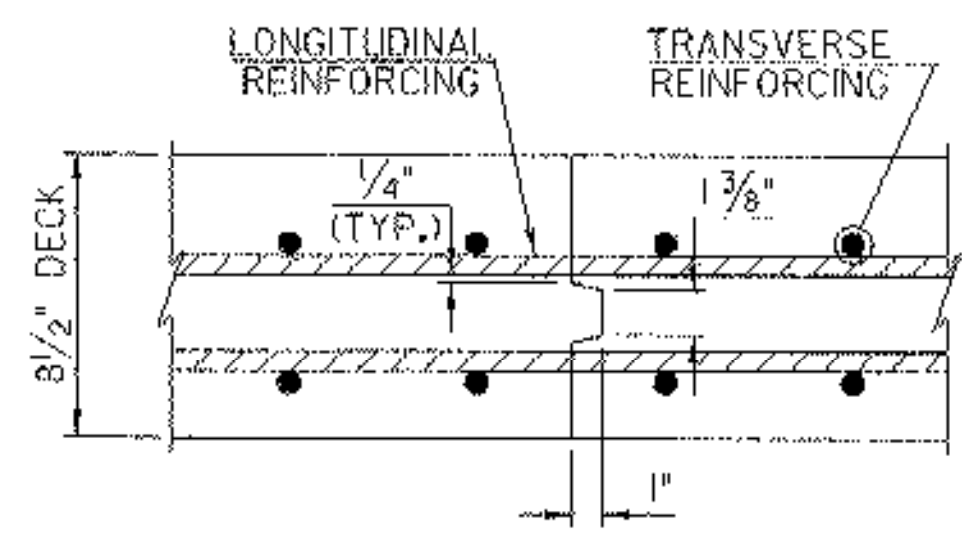
**CURB AND RAIL SECTION**  
SCALE: 1" = 1'-0"



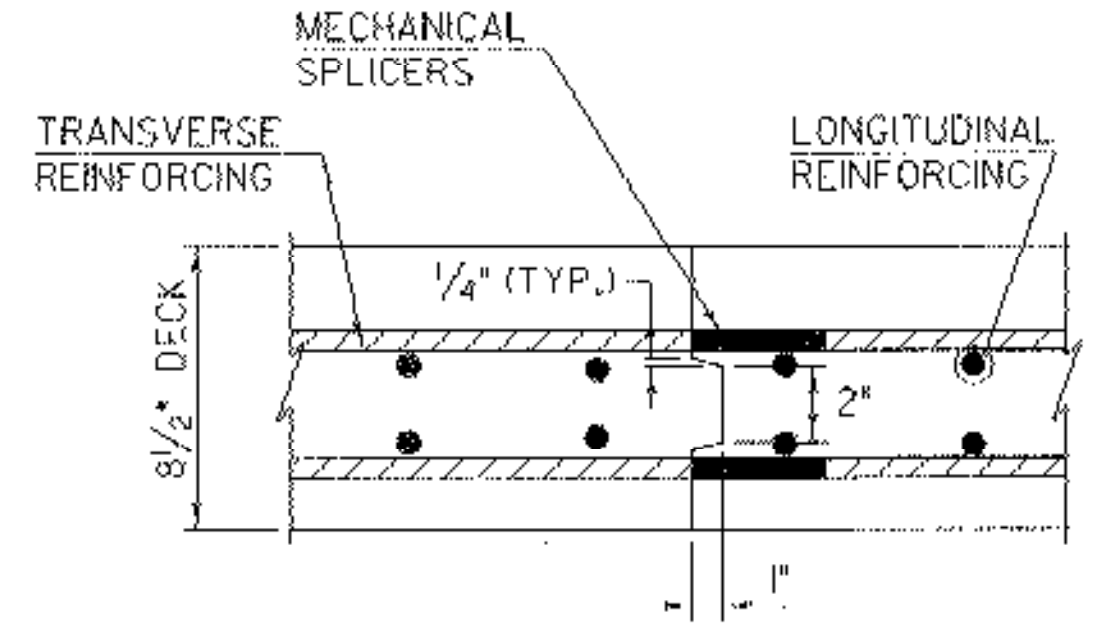
**FASCIA OFFSET PLAN**  
SCALE: 3/32" = 1'-0"



**TYPICAL SECTION THROUGH CONCRETE CURB CONSTRUCTION JOINT**  
NTS



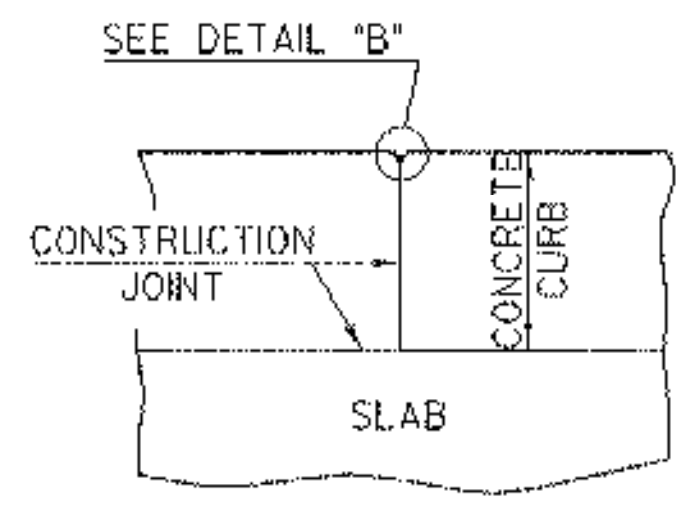
**TRANSVERSE BRIDGE SLAB CONSTRUCTION JOINT DETAILS**  
NTS



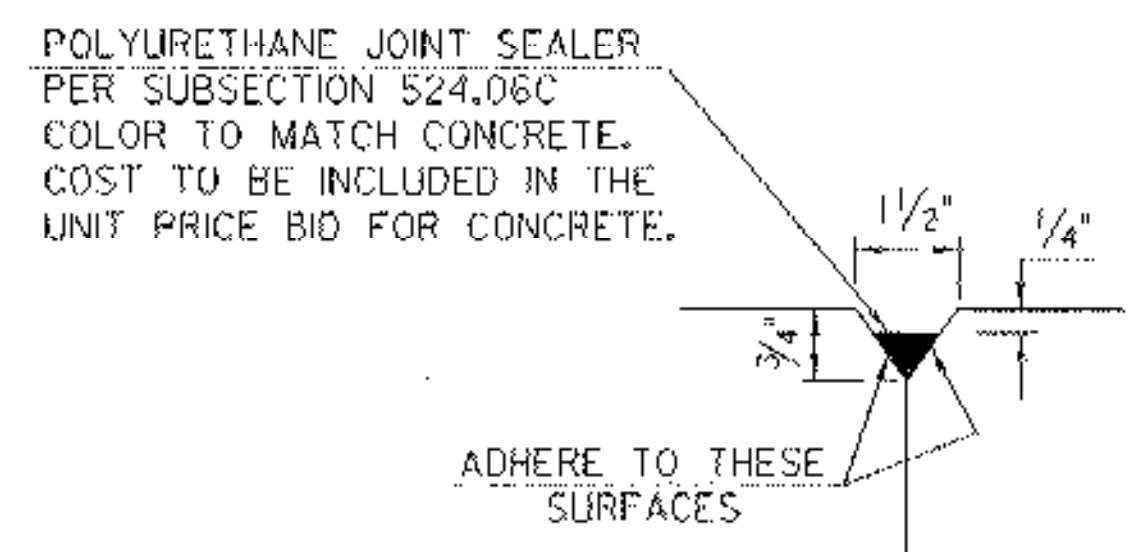
**LONGITUDINAL BRIDGE SLAB CONSTRUCTION JOINT DETAILS**  
NTS

**NOTES:**

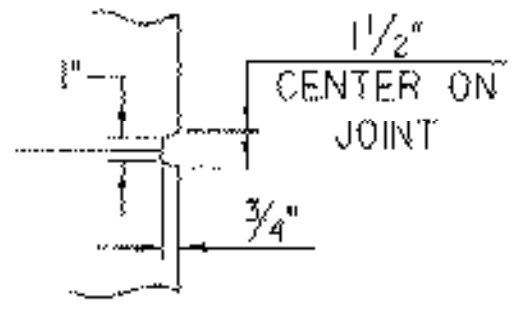
1. POLYURETHANE MEMBRANE AND BLAST CLEANING SHALL BE INCLUDED IN THE UNIT PRICE BID FOR SHEET MEMBRANE WATERPROOFING.
2. CONSTRUCTION JOINTS THROUGH CONCRETE CURBS SHALL BE SPACED A MAXIMUM OF 15'-0" CENTER TO CENTER AND SHALL BE 1'-6" MINIMUM FROM THE CENTER OF THE NEAREST BRIDGE RAIL POST. CONCRETE SHALL BE PLACED IN ALTERNATE SECTIONS WITH A MINIMUM OF 48 HOURS DELAY BETWEEN ADJACENT POURS.
3. LONGITUDINAL REINFORCING SHALL PASS THROUGH CONCRETE CONSTRUCTION JOINTS.



**SECTION B-B**  
NTS



**DETAIL "B"**  
NTS



**SCORE MARK DETAIL**  
NTS

<b>STATE OF VERMONT AGENCY OF TRANSPORTATION</b>			
Town Of	MONTGOMERY	Bridge No.	21
Highway No.	VT 118	Log Sta.	
		Surv. Sta.	
<b>VT 118 OVER TROUT RIVER SUPERSTRUCTURE DETAILS</b>			
Designed By	J. Howe	Drawn By	J. Davis
Checked By	R. Hebert	Bridge Design Supervisor	R. WHITCOMB
Date	8/31/01	Date	
PROJECT	MONTGOMERY	PROJECT NO.	BHF 0283181S
I.G.C. Info.			ZC316CRD.DGN
Bridge Sheet No.		Sheet	24 of 45

**TYLIN INTERNATIONAL**