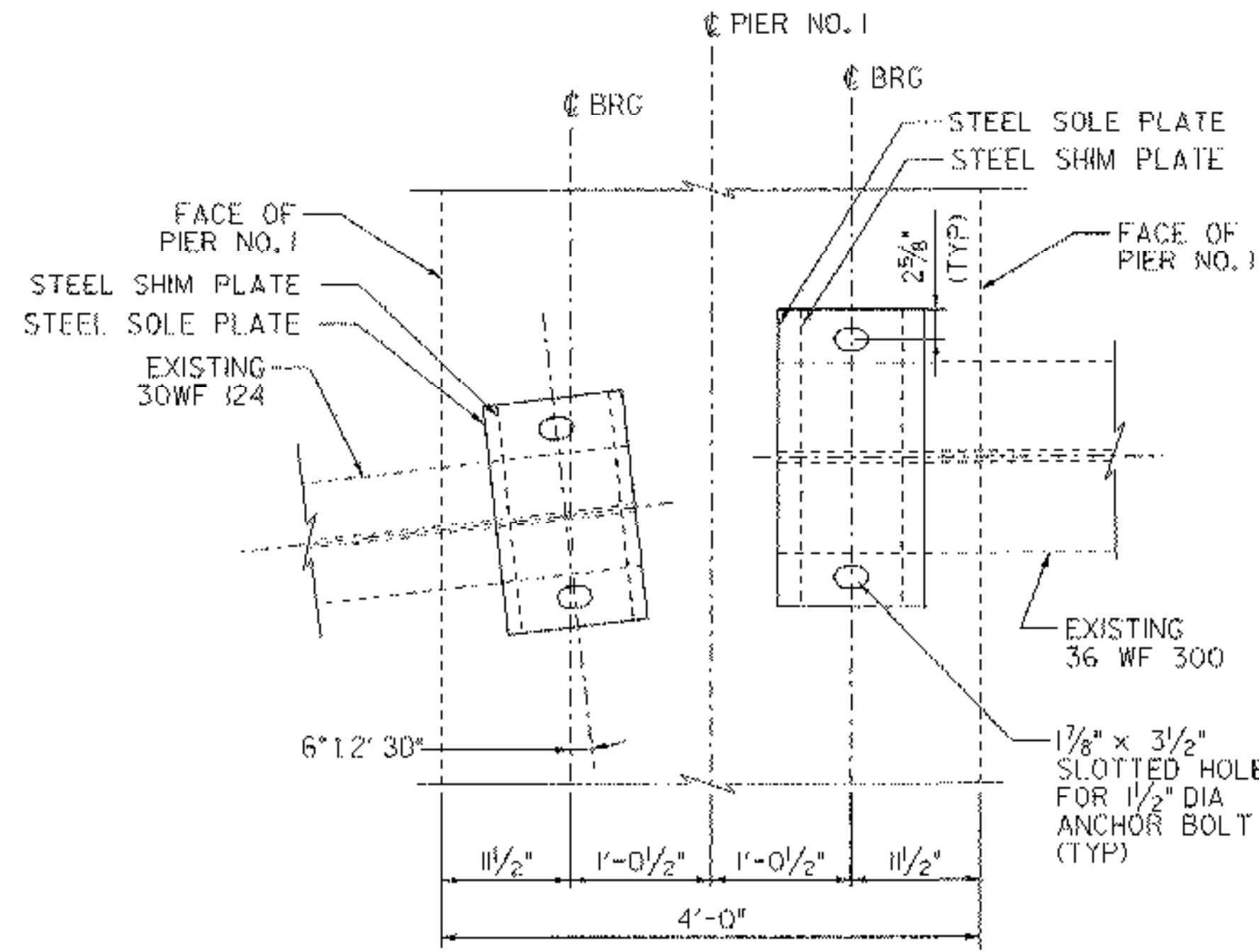


**FIXED BEARING PAD
@ ABUTMENT NO. 1**

SCALE: 1" = 1'-0"



**EXPANSION BEARINGS
@ PIER NO. 1**

SCALE: 1" = 1'-0"

"A" OR "B" TABLE

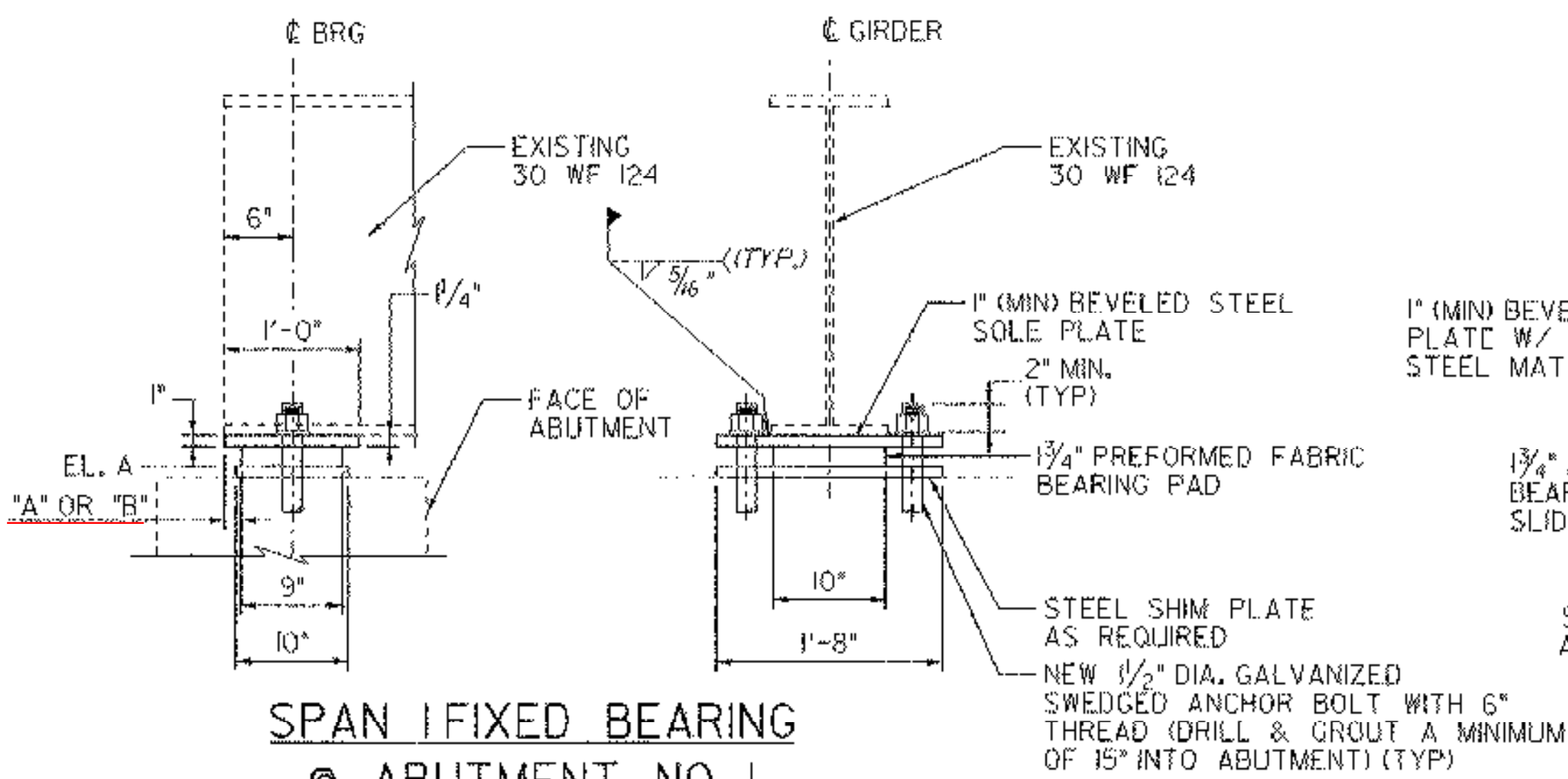
TEMP.	"A" DIST.	"B" DIST.
-30°F	2 7/16"	2 3/16"
-15°F	2 3/8"	2 1/4"
0°F	2 5/8"	2 3/8"
15°F	2 1/4"	2 1/4"
30°F	2 3/16"	2 1/16"
45°F	2 1/8"	2"
60°F	2 1/16"	1 5/8"
75°F	2"	1 7/8"
90°F	1 5/8"	1 7/8"
105°F	1 7/8"	1 3/4"
120°F	1 7/8"	1 1/2"

(FOR SPAN 1 AND 3 ONLY)

"B" DISTANCE IS THE FINAL SETTING FOR THE BEARING PAD AFTER THE CONCRETE SLAB, CURB, PAVEMENT AND BRIDGE RAIL ARE PLACED. "A" DISTANCE IS LISTED FOR SETTING THE BEARING BEFORE THE CONCRETE DECK AND CURBS HAVE BEEN PLACED. THE DIFFERENCE IS THE THEORETICAL ELONGATION OF THE BOTTOM FLANGE DUE TO DEAD LOAD DEFLECTION. THE FINAL "B" DISTANCE, AS SHOWN IN THE TABLE, MUST BE ATTAINED WITHIN 1/16 OF AN INCH.

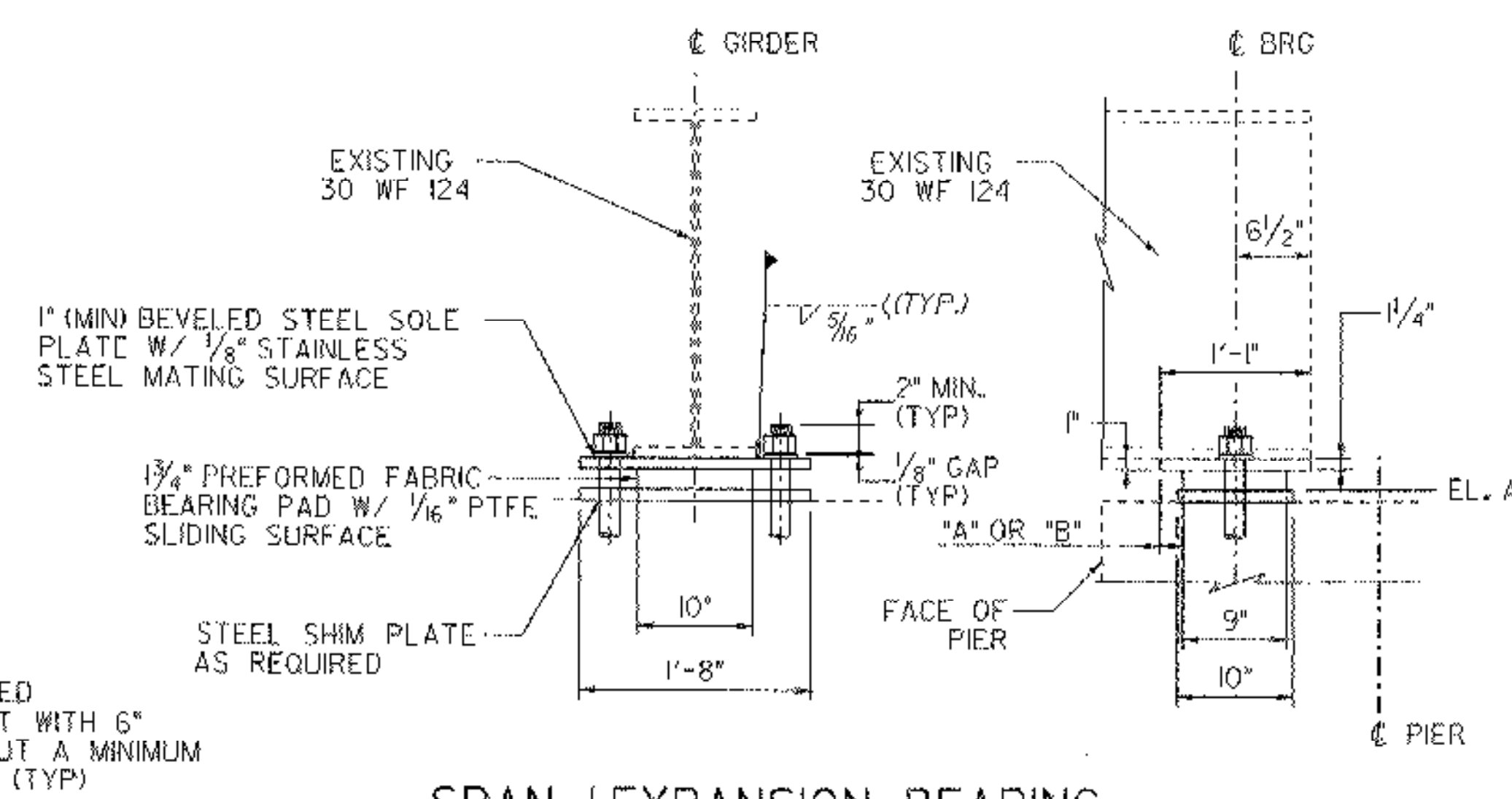
MINIMUM ANCHOR BOLT LENGTH (IN)

	SPAN 1		SPAN 2		SPAN 3	
	ABUT #1	PIER #1	PIER #1	PIER #2	PIER #2	ABUT #2
G1-G6	25	25	22	25	22	22



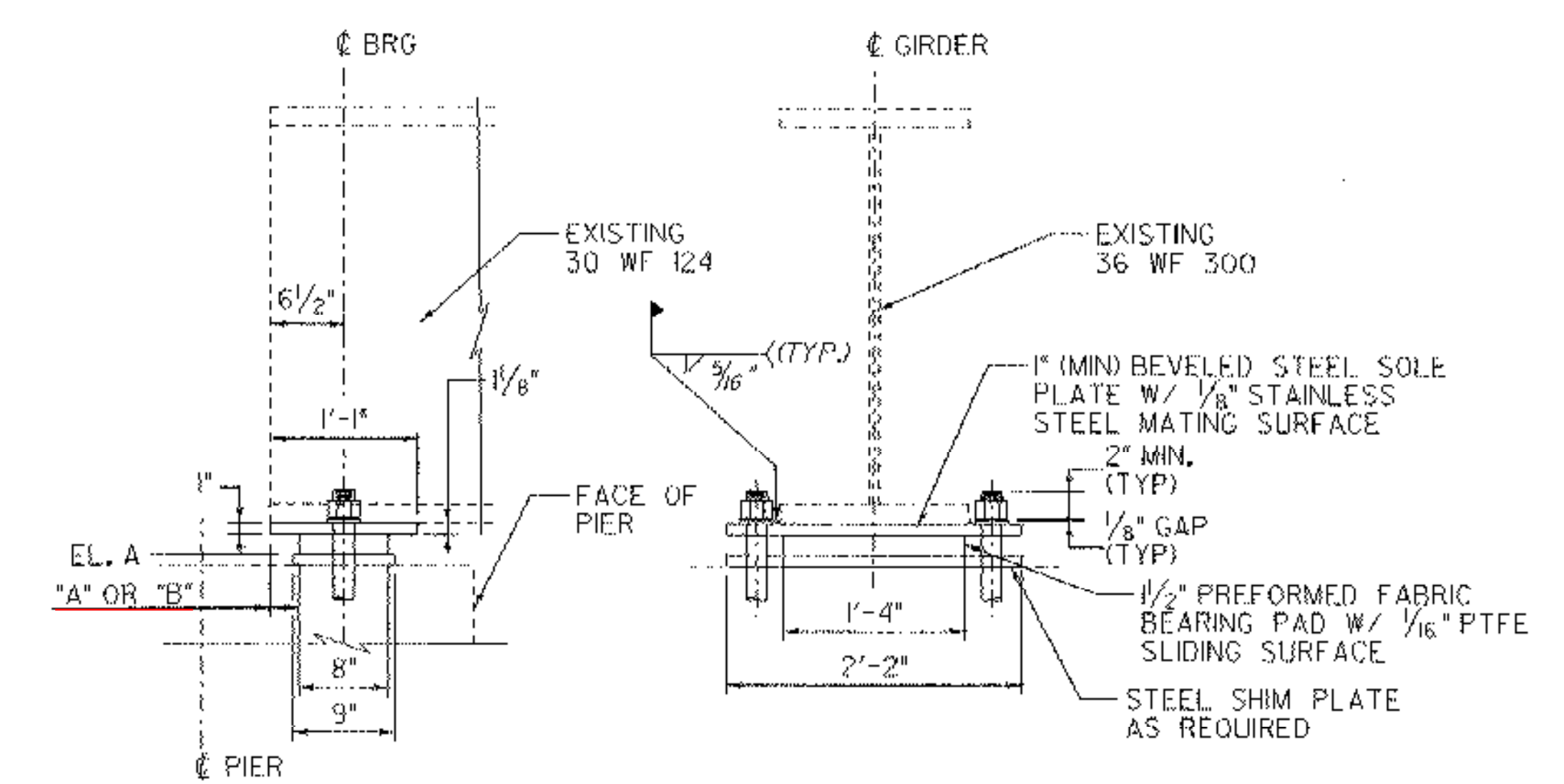
**SPAN 1 FIXED BEARING
@ ABUTMENT NO. 1**

SCALE: 1" = 1'-0"



**SPAN 1 EXPANSION BEARING
@ PIER NO. 1**

SCALE: 1" = 1'-0"



**SPAN 2 EXPANSION BEARING
@ PIER NO. 1**

SCALE: 1" = 1'-0"

BEARING NOTES:

- BRIDGE SEAT ELEVATIONS SHALL BE FIELD VERIFIED PRIOR TO DETERMINING REQUIRED SHIM PLATE THICKNESSES.
- BEARING HEIGHTS SHALL BE SET TO MAINTAIN EXISTING GIRDER CROSSFALL.
- SOLE PLATES AND SHIM PLATES SHALL BE AASHTO M270, GRADE 36 STEEL AND SHALL BE GALVANIZED OR METALIZED AS PER SUBSECTION 531.04 (B), 506.14, AND 506.15 OF THE STANDARD SPECIFICATIONS FOR ALL PROJECTS. IF THE BEARINGS ARE METALIZED, THEY SHALL BE SEALED WITH AN APPROVED SEALANT (NOT PRIMER) PER 531.04 (B) OF THE STANDARD SPECIFICATIONS. AREAS OF GALVANIZING OR METALIZING DAMAGED BY FIELD WELDING OR HANDLING SHALL BE REPAIRED IN ACCORDANCE WITH SUBSECTION 513 OF THE SUPPLEMENTAL SPECIFICATIONS.
- STAINLESS STEEL MATING SURFACES SHALL CONFORM TO THE REQUIREMENTS OF ASTM A 240, TYPE 304.
- ANCHOR BOLTS, NUTS, AND WASHERS SHALL MEET THE REQUIREMENTS OF SECTION 714.08. ANCHOR BOLTS ARE TO BE PAID FOR UNDER ITEM 531.10, "BEARING DEVICE ASSEMBLY (FABRIC)".
- ANCHOR BOLTS SHALL BE GROUTED IN HOLES DRILLED IN EXISTING SEAT WITH A MINIMUM EMBEDMENT OF 1'-3". DRILLING AND GROUTING SHALL BE PAID FOR UNDER ITEM 531.10 "BEARING DEVICE ASSEMBLY (FABRIC)".
- AT THE EXPANSION BEARING ANCHOR BOLTS, LEAVE 1/8" GAP BELOW NUT.
- AFTER BEARING INSTALLATION THREADS ABOVE NUT SHALL BE BURRED.
- BLOCKING SHALL BE PROVIDED DURING REPLACEMENT OF BEARINGS. PAYMENT FOR BLOCKING SHALL BE MADE UNDER ITEM 502.11, "SHORING SUPERSTRUCTURE BEARINGS".
- FOR ADDITIONAL BEARING DETAILS SEE SHEETS 21 AND 25.
- SHOP DRAWINGS CONFORMING TO SUBSECTION 531.03 SHALL BE SUBMITTED TO INCLUDE WELDING AND BONDING PROCEDURES.

ESTIMATED SHIM PLATE THICKNESS (IN)

	SPAN 1		SPAN 2		SPAN 3	
	ABUT #1	PIER #1	PIER #1	PIER #2	PIER #2	ABUT #2
G1	2 1/4	5/8	1	1 3/8	1/8	0
G2	1 5/8	1/4	1	1 1/8	7/8	3/8
G3	2 3/8	5/8	7/8	1 1/8	1/4	5/8
G4	2 1/8	5/8	1 1/4	1 3/4	1/8	3/8
G5	2 1/4	1/4	7/8	1 1/4	1/8	1/2
G6	2 5/8	1	1	1 1/2	1/4	3/8

TOP OF SHIM PLATE ELEVATIONS (ELEVATION A)

	SPAN 1		SPAN 2		SPAN 3	
	ABUT #1	PIER #1	PIER #1	PIER #2	PIER #2	ABUT #2
G1	461.01	461.93	461.44	462.01	462.56	462.27
G2	460.74	461.62	461.18	461.74	462.31	462.02
G3	460.49	461.37	460.89	461.48	462.01	461.75
G4	460.19	461.10	460.64	461.25	461.76	461.47
G5	459.94	460.84	460.38	460.99	461.51	461.22
G6	459.66	460.59	460.12	460.72	461.29	460.95

NO SHIM PLATES REVISED 3/13/06

TYLIN INTERNATIONAL

**STATE OF VERMONT
AGENCY OF TRANSPORTATION**

Town Of **MONTGOMERY** Bridge No. **21**

Highway No. **VT 118** Log Sta.

VT 118 OVER TROUT RIVER

BEARING DETAILS (1)

Designed By **J Howe** Date Drawn By **J Davis**

Checked By **R Hebert** Date **08/31/01** Bridge Design Supervisor **R.WHITCOMB** Date

PROJECT **MONTGOMERY** PROJECT NO. **BHF 0283(8)S**

Log Sta. Info. **ZC316b01.dgn**

Bridge Sheet No. Sheet **20** of **45**