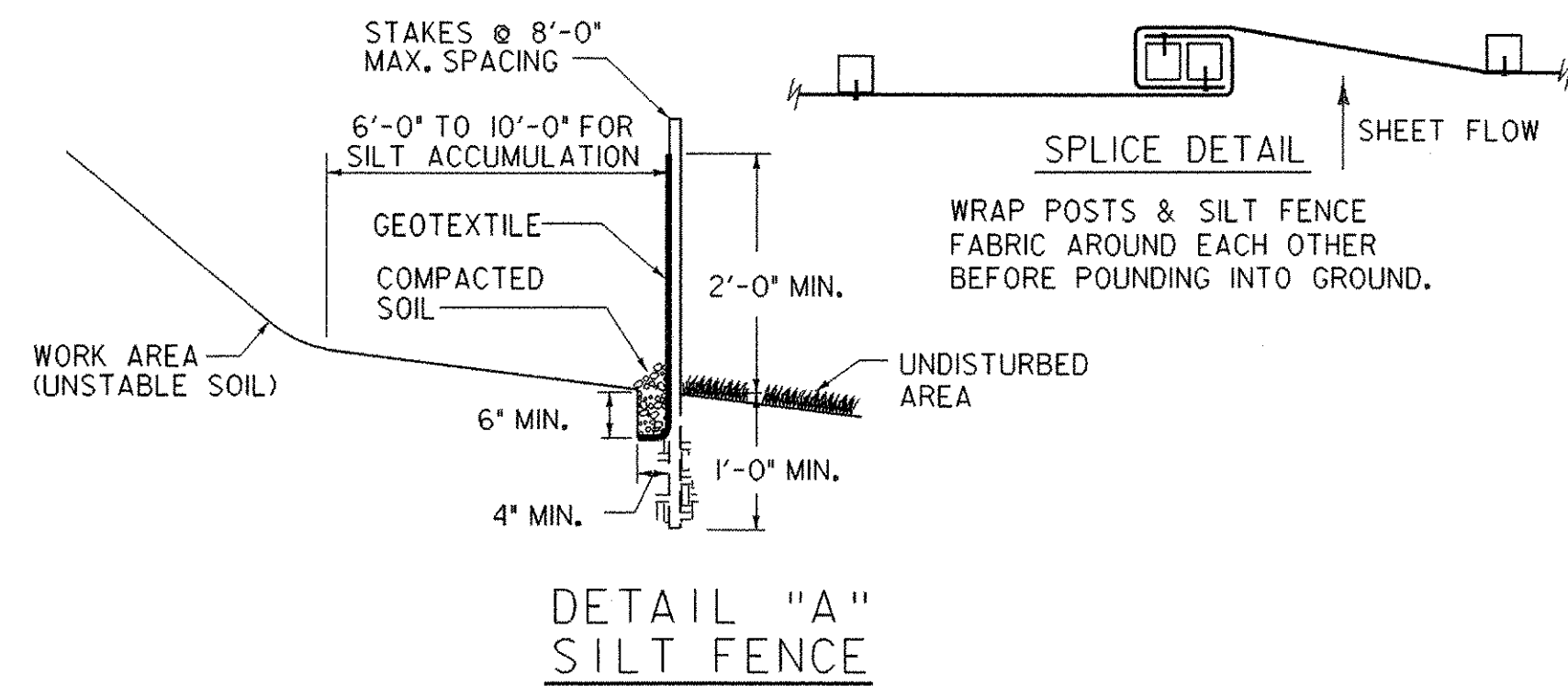


NOTE: REFER TO THE "VERMONT HANDBOOK FOR SOIL EROSION AND SEDIMENT CONTROL FOR CONSTRUCTION SITES" FOR ADDITIONAL EROSION CONTROL MEASURES.

HAY BALES AND SILT FENCE ARE NOT TO BE USED ACROSS AREAS OF CONCENTRATED FLOW.

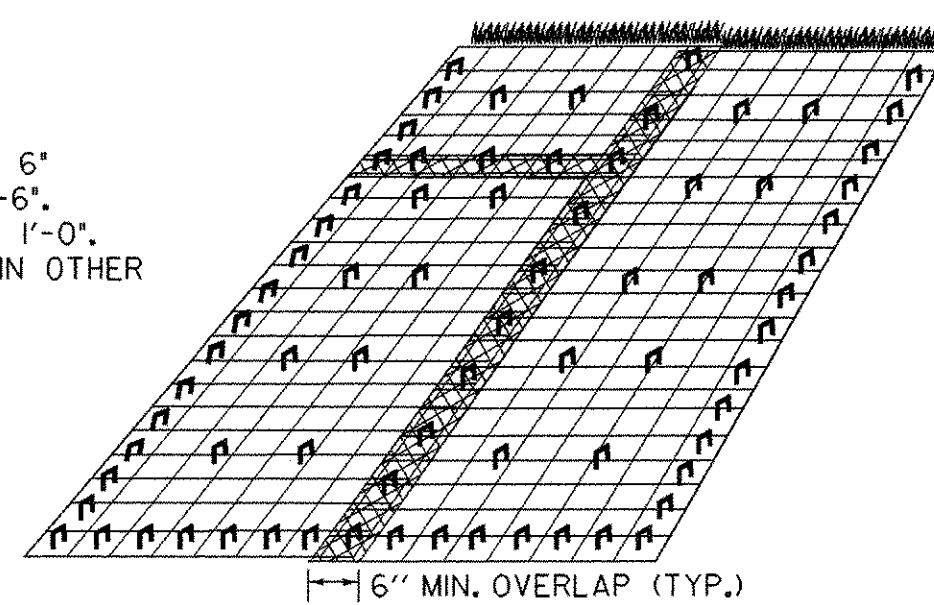


NOTES:

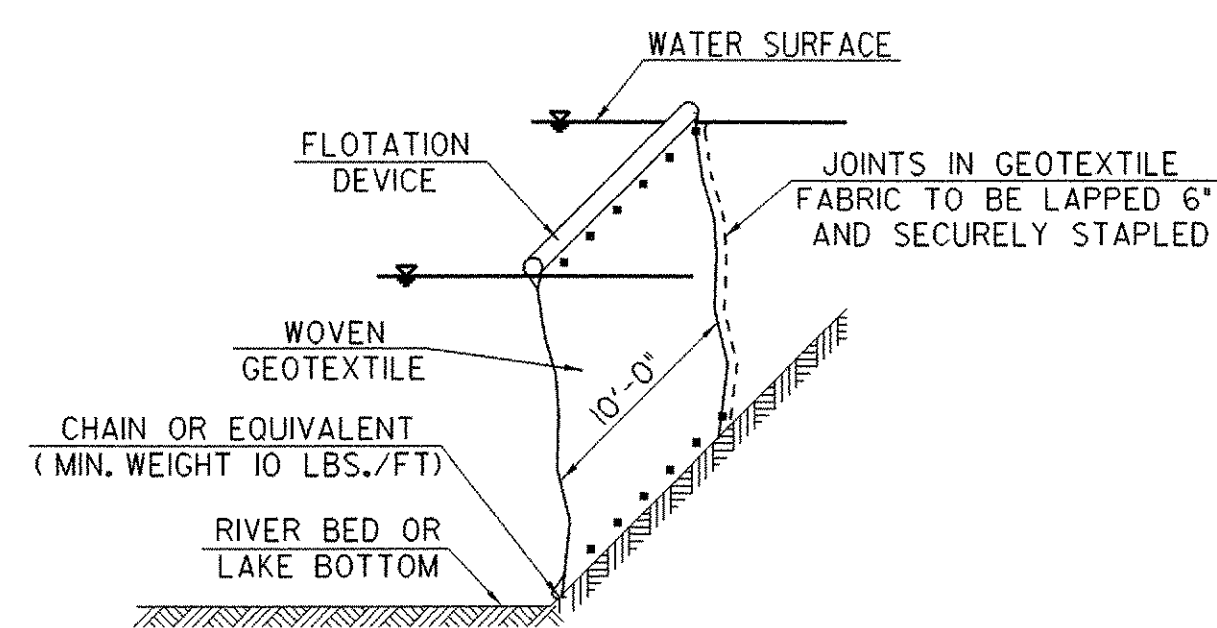
- DO NOT USE SILT FENCE IN STREAMS, DRAINAGE DITCHES, OR AREAS OF CONCENTRATED FLOW.
- BACK WITH STAKED-IN-PLACE HAY BALES OR WIRE FENCE IF ADDITIONAL SUPPORT IS NEEDED.
- MUST BE REMOVED WHEN SOIL IS STABILIZED.

NOTES:

- ALL FABRIC OVERLAPS SHALL BE 6" MINIMUM WITH STAPLES EVERY 1'-6".
- STAPLE EDGES OF FABRIC EVERY 1'-0".
- USE 3'-0" MAX. STAPLE SPACING IN OTHER AREAS.
- SEE "EROSION MATTING FOR DITCHES" DETAIL FOR ANCHORING AT TOPS OF SLOPES.

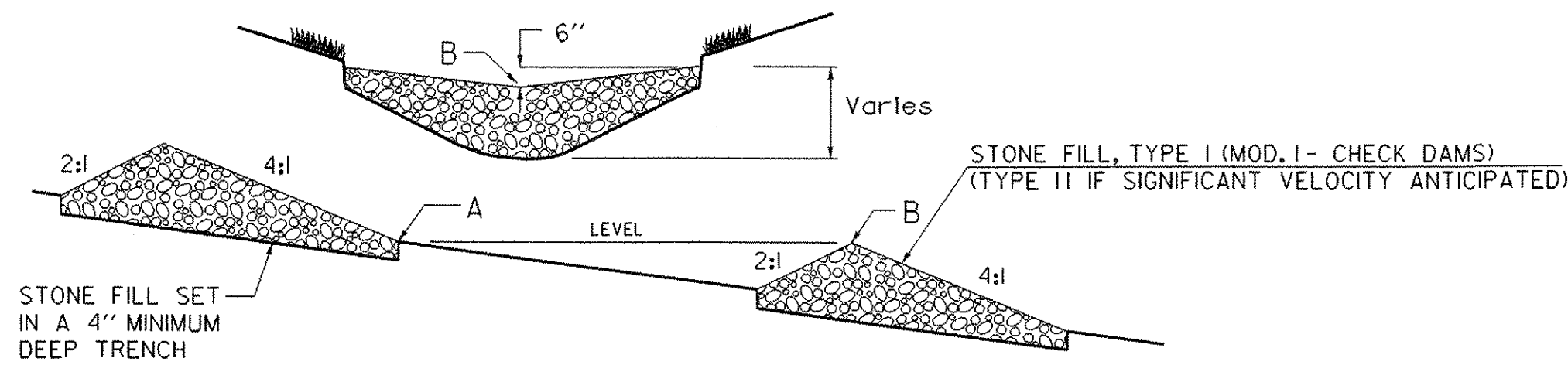


DETAIL "C"
EROSION MATTING FOR SLOPES STEEPER THAN 1:3



DETAIL "F"
FILTER CURTAIN

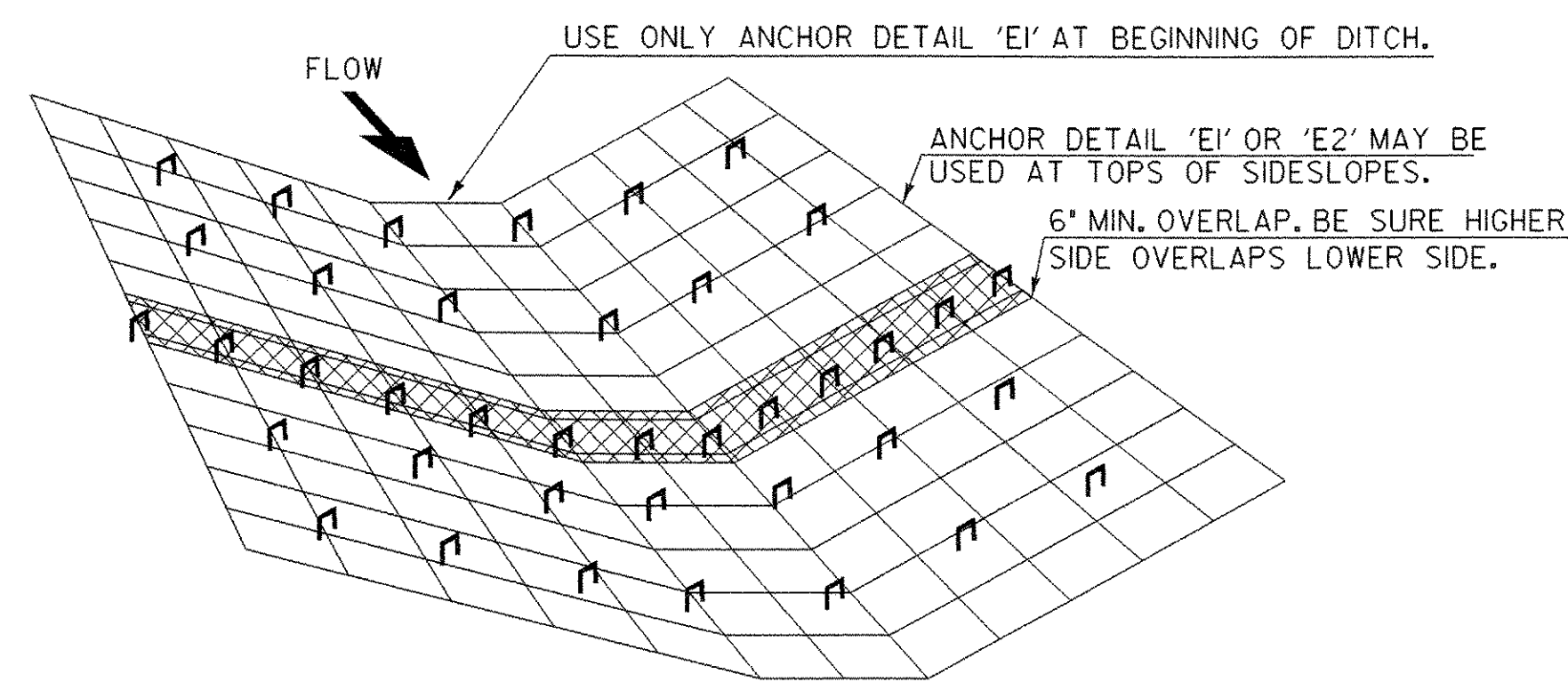
- NOT TO BE USED ACROSS THE FLOW OF WATER
- HEIGHT SHOULD BE SUFFICIENT TO ALLOW FOR VARIATIONS IN THE BOTTOM AND RISING WATER
- ANCHOR FIRMLY IN PLACE AS NEEDED
- INSTALL PRIOR TO EARTH DISTURBING ACTIVITIES AND/OR INSTALLATION OF COFFERDAM WHERE APPLICABLE
- LEAVE IN PLACE UNTIL UP-SLOPE AREAS ARE STABLE AND COFFERDAM IS REMOVED
- USE CARE DURING REMOVAL TO PREVENT THE RELEASE OF CAPTURED SEDIMENT AS MUCH AS POSSIBLE
- SOME DETAILS SHOWN ON THIS SHEET MAY NOT BE UTILIZED ON THIS PROJECT



DETAIL "B"
TEMPORARY STONE CHECK DAM

NOTES:

- CHECK DAMS TO BE USED DURING ESTABLISHMENT OF GRASS LINED DRAINAGE DITCHES
- LOCATE DOWNSTREAM STRUCTURE SUCH THAT POINT "B" IS APPROXIMATELY LEVEL WITH THE LOWEST GROUND ELEVATION "A" OF THE UPSTREAM STRUCTURE.
- PAYMENT FOR THE STONE CHECK DAMS WILL BE MADE FOR THE QUANTITY OF STONE FILL USED. REMOVAL OF STONE CHECK DAMS WILL BE INCIDENTAL TO THE STONE FILL ITEM USED.



DETAIL "D"
EROSION MATTING FOR DITCHES

- TO BE USED WHERE SLOPE OF DITCHLINE RANGES FROM 1% - 2.5%, SLOPES EXCEEDING 2.5% SHALL BE LINED WITH STONE FILL, TYPE I.
- OVERLAPS SHALL BE 6" MINIMUM IN THE DIRECTION OF FLOW AND STAPLED EVERY 20" MIN. THROUGH BOTH FABRICS.
- USE 36" MAX STAPLE SPACING IN OTHER AREAS.

SEEDING FORMULA RURAL AREAS				
% WT.	LBS./A.	NAME	PUR %	GERM %
37.5	22.5	CREeping RED FESCUE	98	85
37.5	22.5	TALL FESCUE	95	90
5.0	3.0	RED TOP	95	90
15.0	9.0	BIRD'SFOOT TREFOIL	98	85
5.0	3.0	ANNUAL RYEGRASS	95	85
100.0	60.0			

GENERAL NOTES

SEED MIXTURE: SHALL NOT HAVE A WEED CONTENT EXCEEDING 0.40% BY WEIGHT AND SHALL BE FREE OF ALL NOXIOUS SEED.

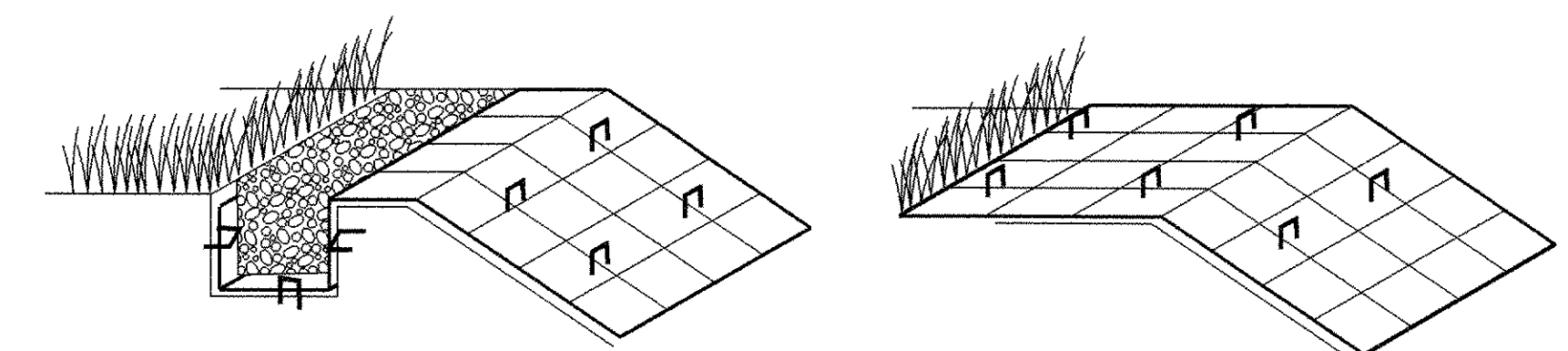
SEED: TO BE APPLIED PER SEEDING FORMULAS OR AS DIRECTED BY THE ENGINEER.

FERTILIZER: FORMULA 10-20-10, TO BE USED WITH SEED, APPLIED AT THE RATE OF 500 LBS./ACRE. (HYDRO SEEDERS MAY USE 19-19-19 FORMULA).

AGRICULTURAL LIMESTONE: TO BE APPLIED AT THE RATE OF 2 TONS/ACRE, OR AS DIRECTED BY THE ENGINEER.

HAY MULCH: TO BE PLACED ON EARTH SLOPES AT THE RATE OF 2 TONS/ACRE, OR AS DIRECTED BY THE ENGINEER.

TOPSOIL: TO BE USED WITH SEED AS INDICATED ON THE PLANS, OR AS DIRECTED BY THE ENGINEER.



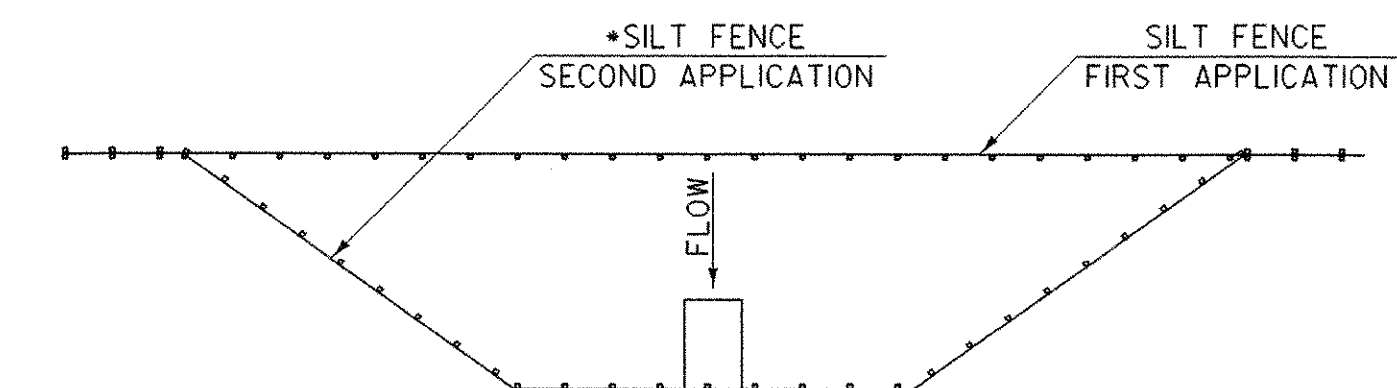
ANCHOR DETAIL 'E1'

INSERT & STAPLE FABRIC INTO 6" X 6" TRENCH PRIOR TO BACKFILLING & COMPACTING SOIL. USE 3 STAPLE PATTERN EVERY 20".

ANCHOR DETAIL 'E2'

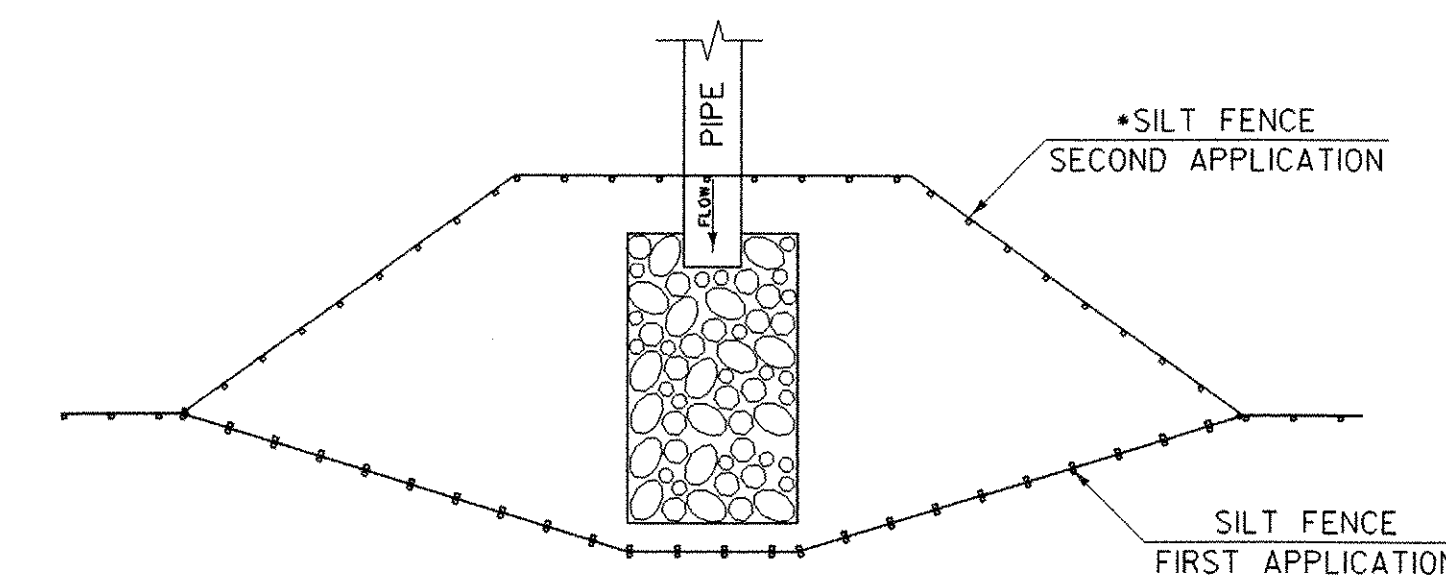
IF THE TOP OF SLOPE IS RELATIVELY FLAT EXTEND MATERIAL APPROXIMATELY 24" AND STAPLE EVERY 20" MINIMUM.

DETAIL "E"
ANCHOR DETAILS FOR EROSION MATTING



DETAIL "I"
PROPOSED PIPE INLET CONTROL

THE SECOND APPLICATION OF SILT FENCE IS TO BE INSTALLED (REMOVE FIRST APPLICATION) PRIOR TO DIVERTING FLOW INTO NEW PIPE FOR BOTH PROPOSED INLET AND OUTLET CONTROLS



DETAIL "J"
PROPOSED PIPE OUTLET CONTROL

SHEET NAME: EROSION CONTROL DETAILS		
PROJECT NAME: MONTGOMERY	HIGHWAY NO.: VT 118	
PROJECT NUMBER: BHF 0283(8)	BRIDGE NO.: 21	OVER: TROUT RIVER
FILE NAME: /PW/98c316/sc316ec.dgn	PLOT DATE: 20-DEC-2005	
PROJECT MANAGER: R. WHITCOMB	DRAWN BY: STRI	
DESIGNED BY: D. BONNEAU	IPARM NAME: se045ec5.1	SHEET 17 OF 45

NOTE: DETAILS NOT TO SCALE