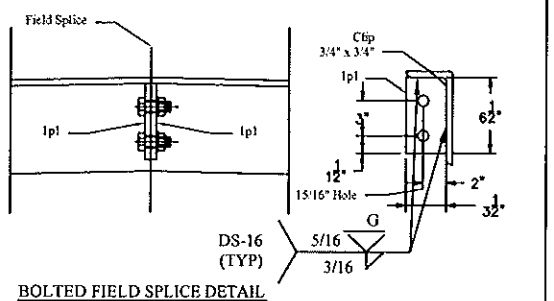


NOTE:
1. THE PHASE 1 SECTION OF THE JOINT WILL BE SHIPPED ASSEMBLED. THE REMAINDER OF THE TROUGH WILL BE BUILT UP AND SECURED TO ELIMINATE ANY POSSIBILITY OF DAMAGE DURING SHIPMENT OR INSTALLATION.

QTY	MARK	SHAPE	LENGTH	REMARKS
1		VERMONT JOINT ASSEMBLY		
1	1a1	L 8" x 4" x 1/2"	21'-1 7/8"	
1	1a2	L 8" x 4" x 1/2"	21'-1 7/8"	
1	1a3	L 8" x 4" x 1/2"	15'-4"	
1	1a4	L 8" x 4" x 1/2"	15'-4"	
4	1p1	Plate 1/2" x 3 1/2"	0'-6 1/2"	
38	S1	3/4" x 10" Welded Stud		Str
36	S2	3/4" x 10" Welded Stud		Bent
2	1r1	1/16" x 3" Butyl Rubber x 38'		
14	3S1	GIRDER SUPPORT PLATES		
7	3S2	ABUTMENT SUPPORT PLATE		
1	4T1	TROUGH		
1	SP1	JOINT PLATE		
1	SP2	JOINT PLATE		
1	SP3	JOINT PLATE		
1	SP4	JOINT PLATE		
1	6D1	DOWNSPOUT		
1	7C1	SIDEWALK ASSEMBLY		
10	1a7	L 8" x 4" x 1/2"	1'-0"	
20		Bolt 3/4" x 1 1/2" Lg		
10		Bolt 3/4" x 1 1/2" Lg w/ Nut		
4		Bolt 7/8" x 2" Lg w/ Nut & Washer		



DRAWING COVERS

VERMONT JOINT LAYOUT

PROJECT	VERMONT RMP 0283 (S)
LOCATION	VERMONT ROUTE 118 BRIDGE NO. 30
ENGINEER	VERMONT AGENCY OF TRANSPORTATION
CUSTOMER	S. D. WELAND CONCRETE CONSTRUCTION CORPORATION

MERRIMACK SHEET METAL

119 HALL STREET
CONCORD NH 03301
Tel. 603.224.7766
Fax 603.224.7925

REV. NO.	DATE	DESCRIPTION
2	4-29-2010	REVISED FOR APPROVAL COMMENTS
1	4-20-2010	REVISED FOR APPROVAL COMMENTS
0	3-22-2010	SUBMITTED FOR APPROVAL

REVISED AS NOTED
MATERIAL: AASHTO # 270 GRADE 36 BARY

DRAWN BY:	RL
CHECKED BY:	JD
FOR NO.:	#3201
DRG.:	F1