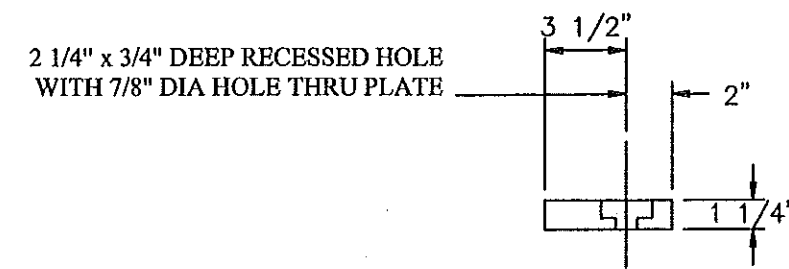


BILL OF MATERIALS				
QTY	MARK	SHAPE	LENGTH	REMARKS
1	SP1	JOINT PLATE		
2	Sp1	Plate 1 1/4 x 5 1/2"	14'-11 1/2"	
30		3/4" Hexhead Bolts x 2" lg with nut		
2	SP2	JOINT PLATE		
2	Sp2	Plate 1 1/4 x 5 1/2"	14'-11 1/2"	
30		3/4" Hexhead Bolts x 2" lg with nut		
2	SP3	JOINT PLATE		
2	Sp3	Plate 1 1/4 x 5 1/2"	15'-4"	
30		3/4" Hexhead Bolts x 2" lg with nut		
2	SP4	JOINT PLATE		
2	Sp4	Plate 1 1/4 x 5 1/2"	15'-4"	
30		3/4" Hexhead Bolts x 2" lg with nut		

No Inspection Taken  
 Make Correction as Noted  
 Submit Specified Item  
 Revise and Resubmit as Noted  
 Rejected

T-Y-L INTERNATIONAL  
 Checked for general compliance with the design concept of the project and general compliance with the information given in the contract documents only. Any action shown is not an approval and is subject to the requirements of the plans and specifications. Any action shown on a specific item shall not be taken as an indication of an assembly of which the item is a component. Contractor is solely responsible for dimensions which shall be confirmed and corrected at the job site, independent of dimensions which shall be confirmed and corrected in the process of the work with that of all other trades and the satisfactory performance of the work.

Reviewed By: *Shanta Keller* Date: *5/10/10*



HOLE LAYOUT

REV NO.	DATE	DESCRIPTION
1	4-20-10	REVISED FOR APPROVAL COMMENTS
2	5-25-10	SUBMITTED FOR APPROVAL

DRAWING COVER  
**PLATE DETAILS**  
 PROJECT: VERMONT ROUTE 118 BRIDGE NO. 32  
 LOCATION: VERMONT ROUTE 118 BRIDGE NO. 32  
 ENGINEER: VERMONT AGENCY OF TRANSPORTATION  
 CUSTOMER: S. D. IRELAND CONCRETE CONSTRUCTION CORPORATION

**MERRIMACK SHEET METAL**  
 119 HALL STREET  
 CONCORD NH 03301  
 Tel. 603.224.7766  
 Fax 603.224.7925

DRAWN BY: RL  
 CHECKED BY: JD  
 SCALE: #3201  
 DWS  
 ES