

△ OFFSET BLOCK DETAIL CHART FOR NE & SW APPROACHES

		OFFSET BLOCK MTG. DIMENSIONS							BEV
POST No.	QTY.	A	B	C	D	E	F (O.C.)	LGTH	X
P8	1	1 7/8"	1'-1 3/8"	2'-6 9/16"	5/8"	1 1/4"	2'-9 3/16"	2'-9 9/16"	1 1/16
P9	1	1 7/8"	11 11/16"	2'-3 9/16"	5/8"	1 1/4"	2'-6 1/4"	2'-6 9/16"	1 1/16
P10	1	1 7/8"	10"	2'-0 9/16"	5/8"	1 1/4"	2'-3 1/4"	2'-3 9/16"	1 1/16
P11	1	1 7/8"	8 5/16"	1'-9 5/8"	5/8"	1 1/4"	2'-0 5/16"	2'-0 5/8"	1 1/16
P15	1	1 3/4"	1'-1 1/4"	2'-1 13/16"	7/16"	1 3/8"	2'-4 9/16"	2'-4 13/16"	11/16
P16	1	1 3/4"	11 9/16"	1'-11 7/16"	7/16"	1 3/8"	2'-2 1/4"	2'-2 7/16"	11/16
P17	1	1 3/4"	9 7/8"	1'-9 1/16"	7/16"	1 3/8"	1'-11 7/8"	2'-0 1/16"	11/16
P18	1	1 3/4"	8 3/16"	1'-6 3/4"	7/16"	1 3/8"	1'-9 9/16"	1'-9 3/4"	11/16

△ OFFSET BLOCK ~ RAIL MTG. DIMENSIONS

POST No.	OFFSET BLOCK	H	J	K	L	M	N
P8	OB8	1 1/16"	1'-0 3/8"	2'-5 11/16"	7/8"	1'-0"	2'-5 1/16"
P9	OB9	1 1/16"	10 11/16"	2'-2 11/16"	7/8"	10 5/16"	2'-2 1/8"
P10	OB10	1 1/16"	9 1/16"	1'-11 11/16"	7/8"	8 5/8"	1'-11 1/8"
P11	OB11	1 1/16"	7 3/8"	1'-8 3/4"	7/8"	6 15/16"	1'-8 1/8"
P15	OB15	1"	1'-0 3/8"	2'-1"	7/8"	1'-0"	2'-0 1/2"
P16	OB16	1"	10 11/16"	1'-10 5/8"	7/8"	10 5/16"	1'-10 3/16"
P17	OB17	1"	9"	1'-8 1/4"	7/8"	8 5/8"	1'-7 13/16"
P18	OB18	1"	7 5/16"	1'-5 15/16"	7/8"	7"	1'-5 7/16"

△ OFFSET BLOCK DETAIL CHART FOR NE & SW APPROACHES

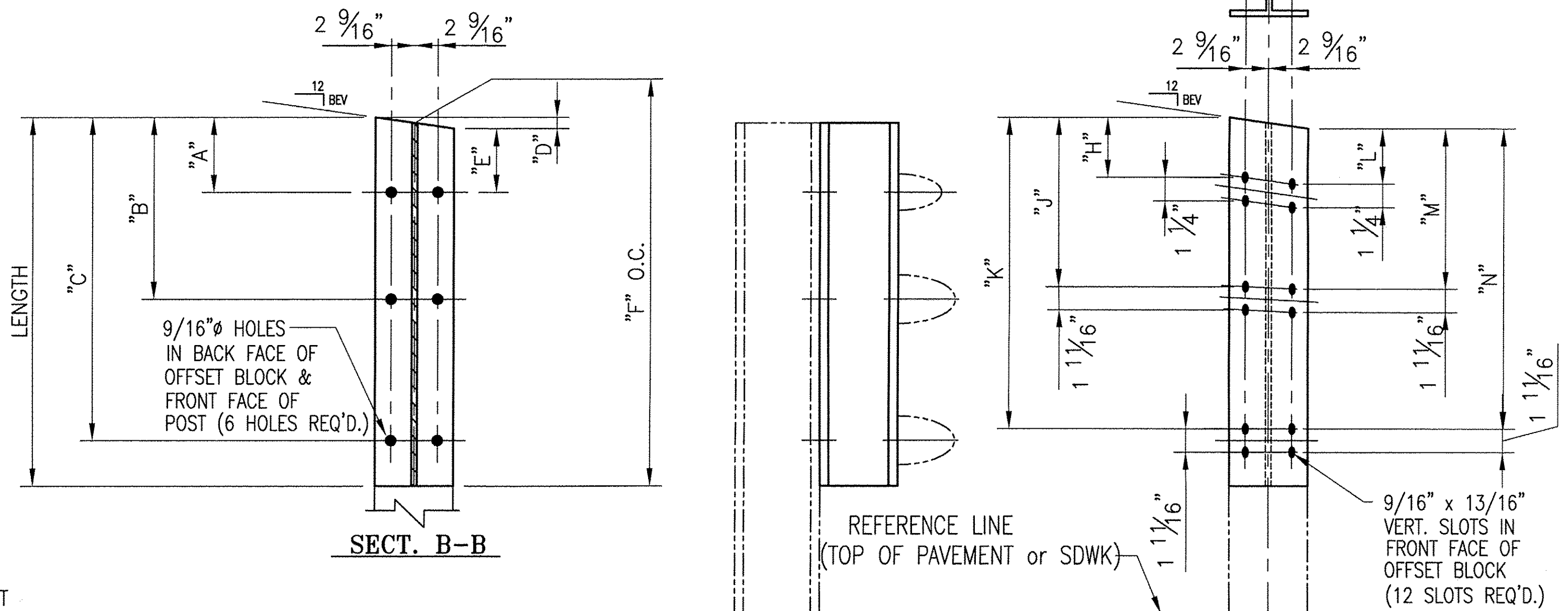
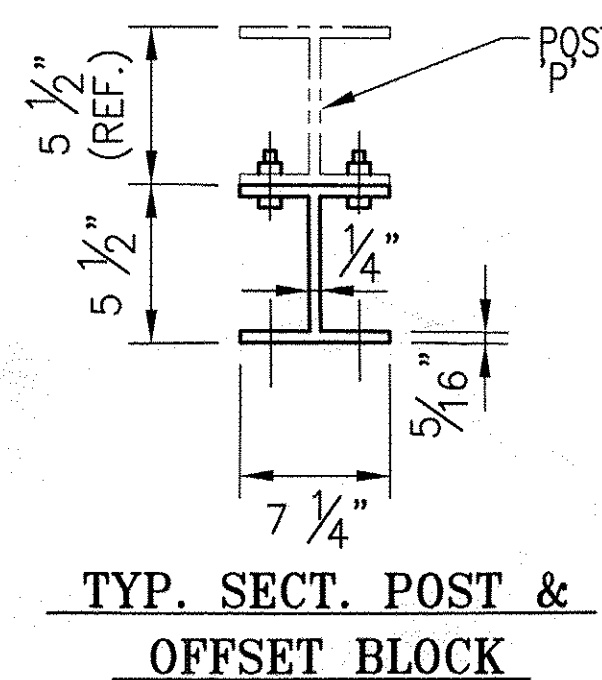
		OFFSET BLOCK MTG. DIMENSIONS						BEV
POST No.	QTY.	A	B	LGTH	D	E	F (O.C.)	X
P12	1	2 3/16"	1'-1 11/16"	1'-4 11/16"	5/16"	1 13/16"	1'-4 9/16"	9/16
P13	1	2 3/16"	1'-0"	1'-3"	5/16"	1 13/16"	1'-2 13/16"	9/16
P14	1	2 3/16"	10 1/4"	1'-1 1/4"	5/16"	1 13/16"	1'-1 1/16"	9/16
P19	1	2"	11 11/16"	1'-2 11/16"	1/16"	1 15/16"	1'-2 5/8"	1/8
P20	1	2"	10 3/4"	1'-1 3/4"	1/16"	1 15/16"	1'-1 3/4"	1/8
P21	1	2"	9 7/8"	1'-0 7/8"	1/16"	1 15/16"	1'-0 13/16"	1/8

△ OFFSET BLOCK ~ RAIL MTG. DIMENSIONS

POST No.	OFFSET BLOCK	G	H	J	K
P12	OB12	1 3/16"	1'-0 7/8"	1 1/8"	1'-0 9/16"
P13	OB13	1 3/16"	11 1/8"	1 1/8"	10 13/16"
P14	OB14	1 3/16"	9 3/8"	1 1/8"	9 1/8"
P19	OB19	1 3/16"	10 13/16"	1 1/8"	10 3/4"
P20	OB20	1 3/16"	9 15/16"	1 1/8"	9 13/16"
P21	OB21	1 3/16"	9"	1 1/8"	8 15/16"

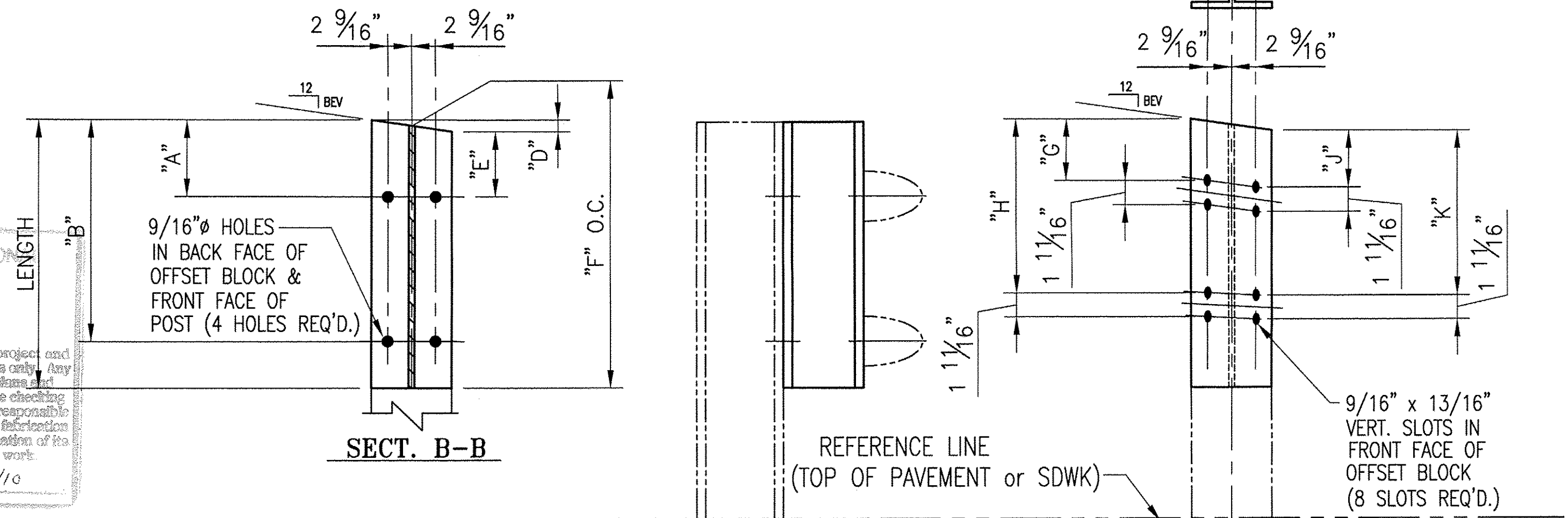
NOTE:
 4 CLAMPING BARS CB-03-A (#19447) PER POSTS
 P12-P14, P19-P21
 w/ 1/2"Ø-13 UNC S.S. BOLT x 1" LG. 'FB1',
 1 1/16" O.D. x 17/32" I.D. x 3/32" THK. ALUM WASHER 'FW1' (#15280 & # 19404) (8 PER POST)

NOTE:
 2 CLAMPING BARS CB-01-H (#28596) PER POSTS
 P8-P11, P15-P18
 4 CLAMPING BARS CB-03-A (#19447) PER POSTS
 P8-P11, P15-P18
 w/ 1/2"Ø-13 UNC S.S. BOLT x 1" LG. 'FB1',
 1 1/16" O.D. x 17/32" I.D. x 3/32" THK. ALUM WASHER 'FW1' (#15280 & # 19404) (16 PER POST)



FRT ELEV VIEW ~ OB8-OB11, OB15-OB18

Checklist:
 X All Designation Filled
 - Make Correction as Noted
 - Submit Specified Item
 - Revise and Resubmit as Noted
 - Rejected
 T-Y-UNINTERNATIONAL
 Checked by: Shanta Keller Date: 3/21/10
 Checking is for general compliance with the design concept of the project and general compliance with the information given in the contract documents only. Any action shown is not an approval and is subject to the requirements of the project specifications. Any action shown on a specific item shall not indicate the checking of an assembly of which the item is a component. Contractor is solely responsible for dimensions which shall be confirmed and controlled at the job site, fabrication processes, techniques of construction, safety precautions and condition of the work with that of all other trades and the satisfactory performance of the work.



FRT ELEV VIEW ~ OB12-OB14, OB19-OB21

ANODIZED
 (SEE NOTES ON LBI)

△	REVISED DIMENSIONS PER APPROVERS MARKUPS	CMS	03 23 10
REV.	DESCRIPTION	BY	DATE

BRIDGE No. 30
 PROJECT No. BHF 0283 (9) S
 ITEM No: 621.745

APPROVED:	REC'D APPROVAL
DRAWING	
L.B. FOSTER COMPANY	
1016 GREENTREE ROAD PITTSBURGH, PENNSYLVANIA 15220	
FOR: A.D. ROSSI CORPORATION	
VERMONT AGENCY OF TRANSPORTATION	
TOWN OF BERKSHIRE, COUNTY OF FRANKLIN	
3-LINE SEMI-ELLIP. ALUM. APPROACH RAIL FOR VT RTE 118	
OFFSET BLOCK DETAILS	
MADE CMS DATE 02/18/10	JOB No. ARO624 CUST. No.
CHECK BLJ DATE 02/25/10	DRAWING LB13 REV. No. ONE